

RIKEN Clone ID : RBb30F01

Vector : pGCAP1

Gene	MAST1	
RefSeq_mRNA	NM_014975.3	4853 bp

● **Plasmid DNA purification**

Date : 20.10.22

Culture : LB (100 ug/ml Ampicillin) 5 ml -> at 37 deg C O/N

Date : 20.10.27

Purification : QIAGEN Miniprep kit -> dH₂O 100 ul

● **Digestion by restriction enzyme/Concentration calibration**

Date : 20.10.27

DNA concentration (O.D.): 302 ng/ul

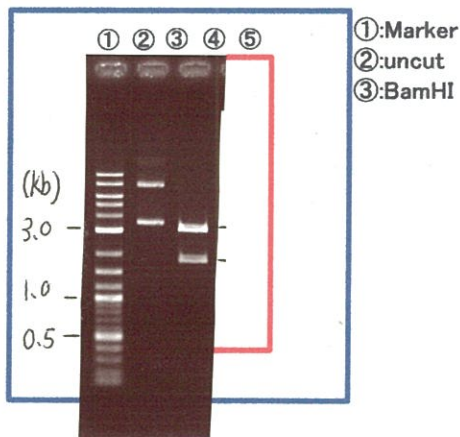
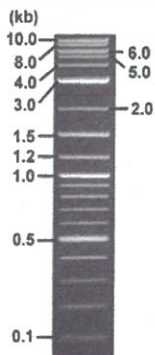
< Size of fragment expected from this clone >

DNA	<u>0.3</u> ul
Enzyme (BamHI)	1 ul
Buffer H	1 ul
dH ₂ O	<u>7.7</u> ul
Total	10 ul

BamHI 3.1kb (vector), 2.7, 2.3 kb (unsure)

Electrophoresis : 1% agarose gel, 1x TAE Buffer

Marker : 2-Log DNA Ladder (NEB#N3200L)



● **Confirmation of the insertion sequence**

Date : 21.02.04

Primer A	pGCAP-F
Primer B	pGCAP-R
Primer C	Poly(A) region
List of Sequencing Primers	http://dna.brc.riken.jp/en/NRCDhum2en.html

● **Adjust plasmid DNA solution to 25 ng/ul**

Date : 21.03.30

DNA (<u>302</u> ng/ul)	<u>81.0</u> ul
10x TE	<u>97.8</u> ul
dH ₂ O	<u>799.6</u> ul
Total	<u>978.4</u> ul

● **Shipping**



Conc. : 25 ng/μl, Volume : 40 μl

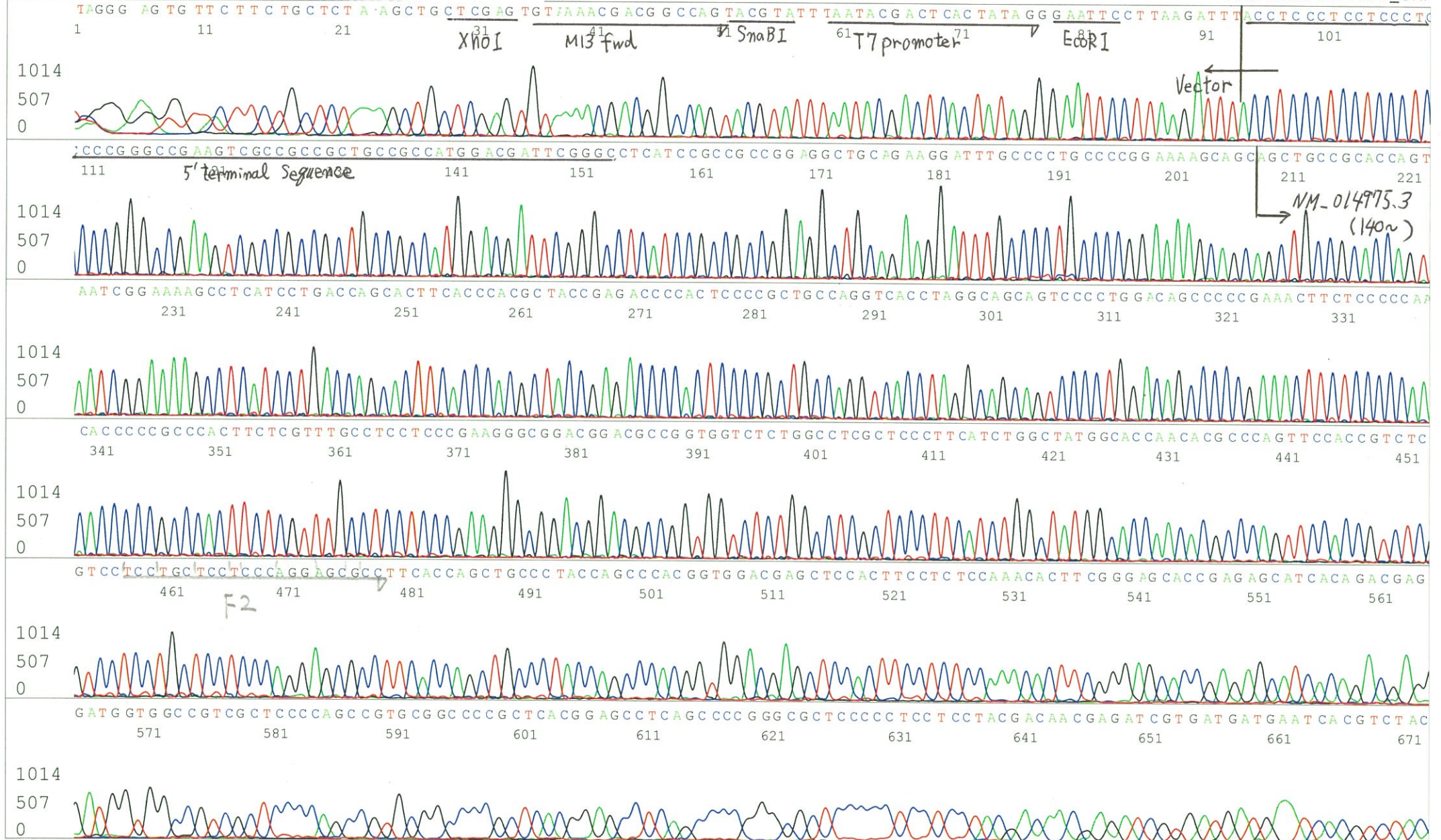


~~Conc. : ng/μl, Volume : μl~~

APPROVED BY :



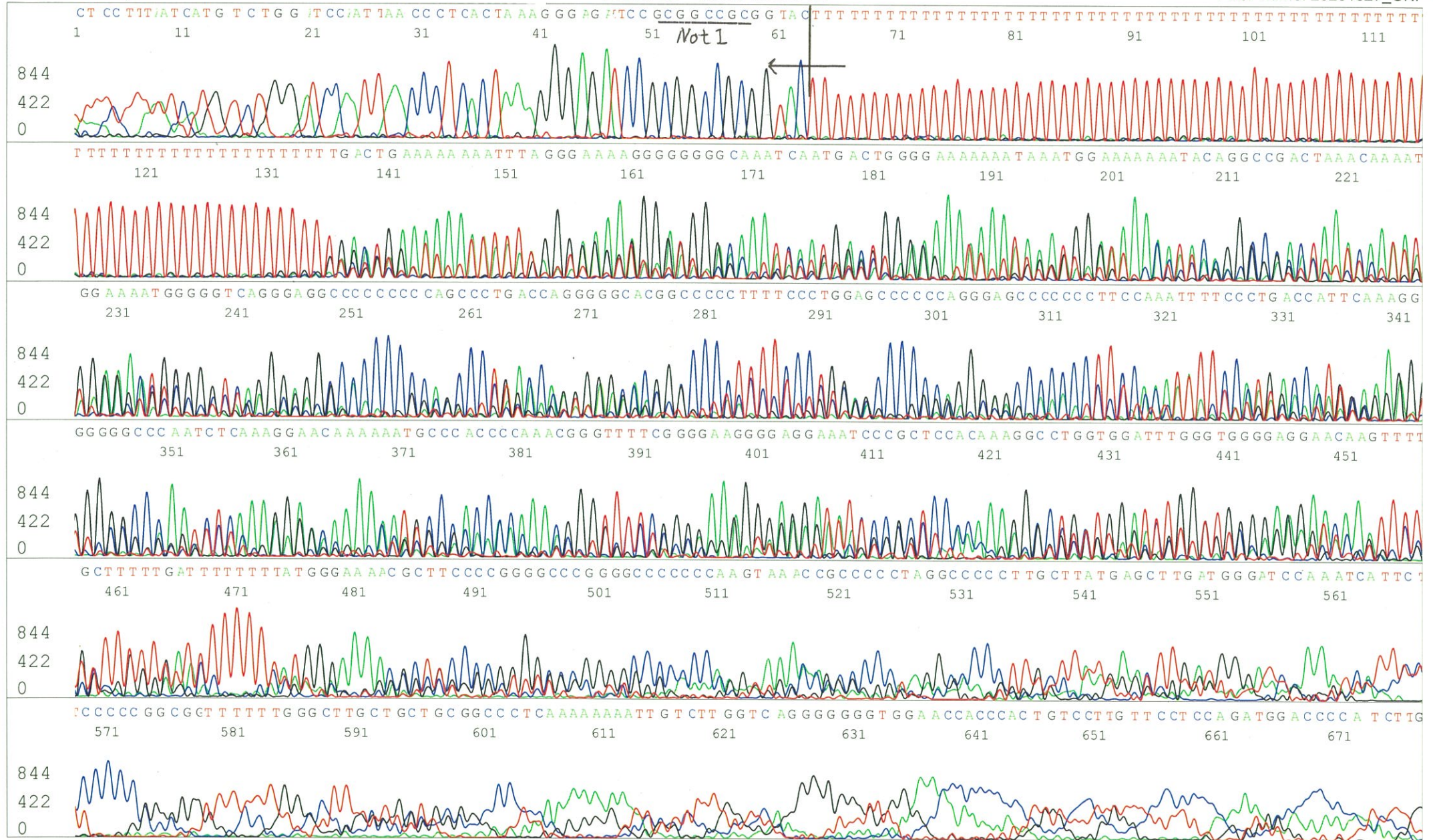
S/N G:163 A:191 T:147 C:25 Primer A : pGCAP-F
KB.bcp
KB 1.4.1.8 Cap:3 5' CTCAGTGGATGTTGCCTTTAC 3'



S/N G:16 A:16 T:13 C:16
 KB.bcp
 KB 1.4.1.8 Cap:6

Primer B : pGCAP-R

5' GCATTCTAGTTGTGGTTTTGTCC 3'



S/N G:30 A:34 T:28 C:29
KB.bcp
KB 1.4.1.8 Cap:22

Primer C : Poly(A) region primer #0
5' TTTTTTTTTTTTTTTTTTTTTTNN 3'

7676_RBb30F01_B0JI_2_GNPmixture_H01_22_ABI24
7676_RBb30F01_B0JI_2_GNPmixture
KB_3500_POP7_BDTv3.mob
Pts 1752 to 8706 Pk1 Loc:1720
Version 6.0 HiSQV Bases: 650 (QV) < 40.

Inst Model/Name 3500/3500 Instrument
Nov 18,2020 01:46PM, JST
Nov 18,2020 02:01PM, JST
Spacing:10.56 Pts/Panel1350
Plate Name: 20201118_covid-19

