

RIKEN Clone ID : RBb23D01

Vector : pGCAP1

Gene	DOK1	
RefSeq_mRNA	NM_001381.4	2494 bp

● Plasmid DNA purification

Date : 2020.01.22

Culture : LB (100 ug/ml Ampicillin) 5 ml -> at 37 deg C O/N

Date : 2020.01.24

Purification : QIAGEN Miniprep kit -> dH₂O 100 ul

● Digestion by restriction enzyme/Concentration calibration

Date : 2020.01.24

DNA concentration (O.D.): 304 ng/ul

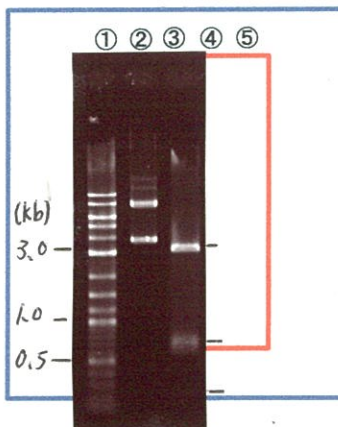
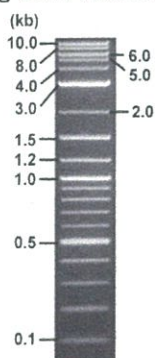
< Size of fragment expected from this clone >

DNA	0.35 ul
Enzyme (BamHI)	1 ul
Buffer H	1 ul
dH ₂ O	7.65 ul
Total	10 ul

BamHI 3.1kb (vector), 0.7, 0.7, 0.6, 0.1 kb (unsure)

Electrophoresis : 1% agarose gel, 1x TAE Buffer

Marker : 2-Log DNA Ladder (NEB#N3200L)



①:Marker
②:uncut
③:BamHI

● Confirmation of the insertion sequence

Date : 2021.04.28

Primer A	pGCAP-F
Primer B	pGCAP-R
Primer C	Poly(A) region
List of Sequencing Primers	http://dna.brc.riken.jp/en/NRCDhum2en.html

● Adjust plasmid DNA solution to 25 ng/ul

Date : 21.04.01

DNA (304 ng/ul)	83.0 ul
10x TE	100.9 ul
dH ₂ O	825.3 ul
Total	1009.2 ul

● Shipping



Conc. : 25 ng/μl, Volume : 40 μl

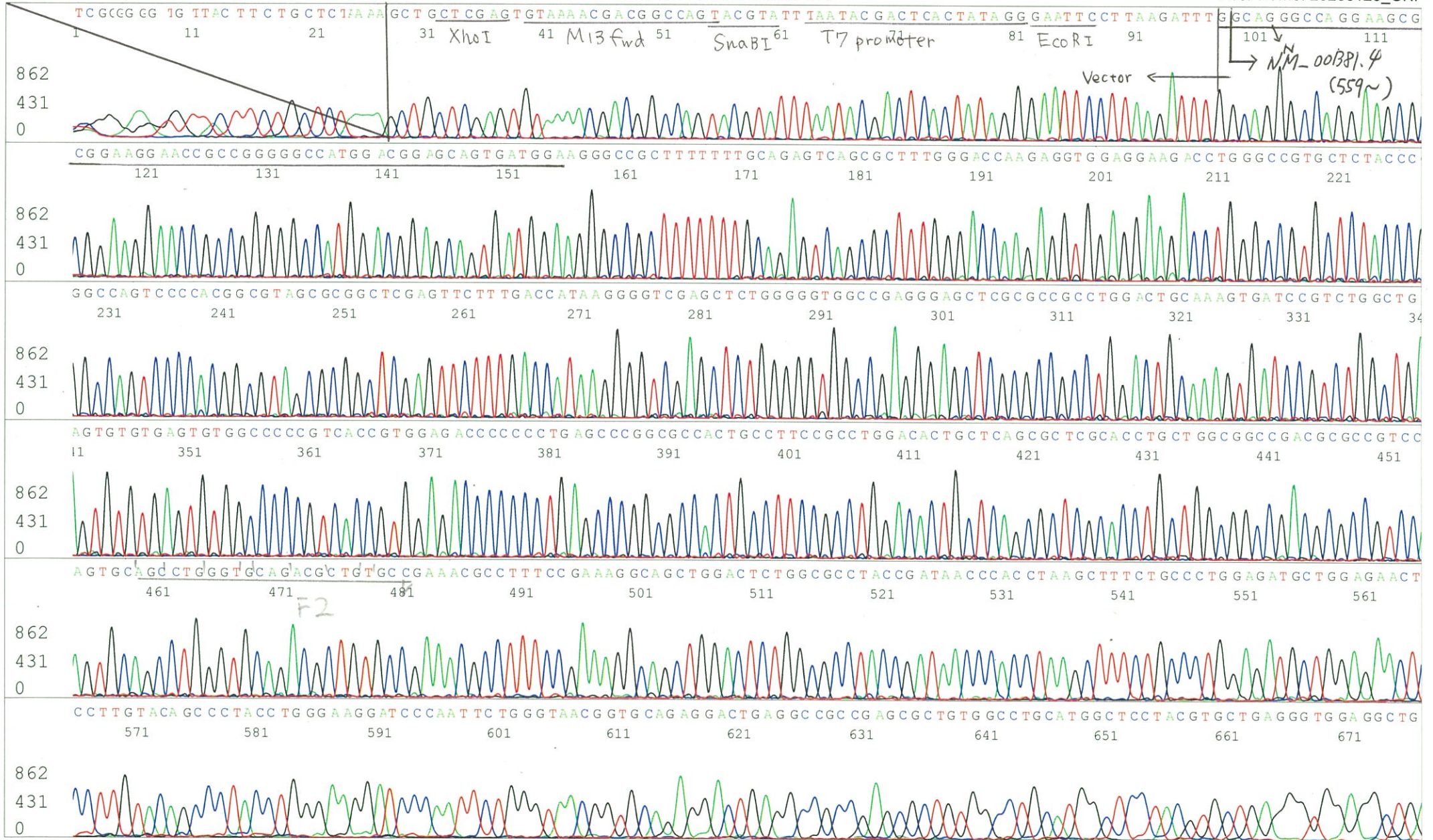


~~Conc. : 25 ng/μl, Volume : 40 μl~~

APPROVED BY :



S/N G:196 A:133 T:86 C:185 Primer A : pGCAP-F
KB.bcp
KB 1.4.1.8 Cap:1 5' CTCAGTGGATGTTGCCCTTAC 3'



S/N G:19 A:16 T:14 C:23
KB.bcp
KB 1.4.1.8 Cap:7

Primer C : Poly(A) region primer #0
5' TTTTTTTTTTTTTTTTTTTTTT VNN 3'

