

RIKEN Clone ID : RBb11E10

Vector : pKA1U5

Gene	BPHL	
RefSeq_mRNA	NM_004332.4	1909 bp

● Plasmid DNA purification

Date : 191223

Culture : LB (100 ug/ml Ampicillin) 5 ml -> at 37 deg C O/N

Date : 200107

Purification : QIAGEN Miniprep kit -> dH₂O 100 ul

● Digestion by restriction enzyme/Concentration calibration

Date : 200107

DNA concentration (O.D.): 337 ng/ul

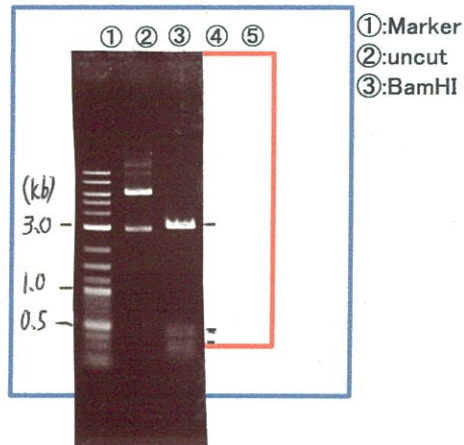
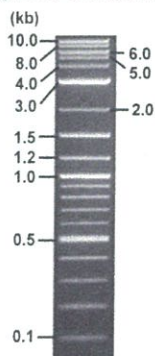
< Size of fragment expected from this clone >

DNA	<u>0.3</u> ul
Enzyme (BamHI)	1 ul
Buffer H	1 ul
dH ₂ O	<u>7.7</u> ul
Total	10 ul

BamHI 3.1kb (vector), 1.2, 0.4, 0.3, 0.2 kb (unsure)

Electrophoresis : 1% agarose gel, 1x TAE Buffer

Marker : 2-Log DNA Ladder (NEB#N3200L)



● Confirmation of the insertion sequence

Date : 21.04.28

Primer A	pGCAP-F
Primer B	pGCAP-R
Primer C	Poly(A) region
List of Sequencing Primers	http://dna.brc.riken.jp/en/NRCDhum2en.html

● Adjust plasmid DNA solution to 25 ng/ul

Date : 21.04.01

DNA (<u>337</u> ng/ul)	<u>82.0</u> ul
10x TE	<u>110.3</u> ul
dH ₂ O	<u>912.8</u> ul
Total	<u>1105.3</u> ul

● Shipping



Conc. : 25 ng/μl, Volume : 40 μl

~~Conc. : _____ ng/μl, Volume : _____ μl~~



APPROVED BY :

S/N G:806 A:716 T:541 C:818

Primer A : pGCAP-F

7676_RBb11E10_A9Lp_pGCAP_F

Jan 08,2020 09:53AM, JST

KB.bcp

KB_3500_POP7_BDTv3.mob

Jan 08,2020 10:07AM, JST

KB 1.4.1.8 Cap:12

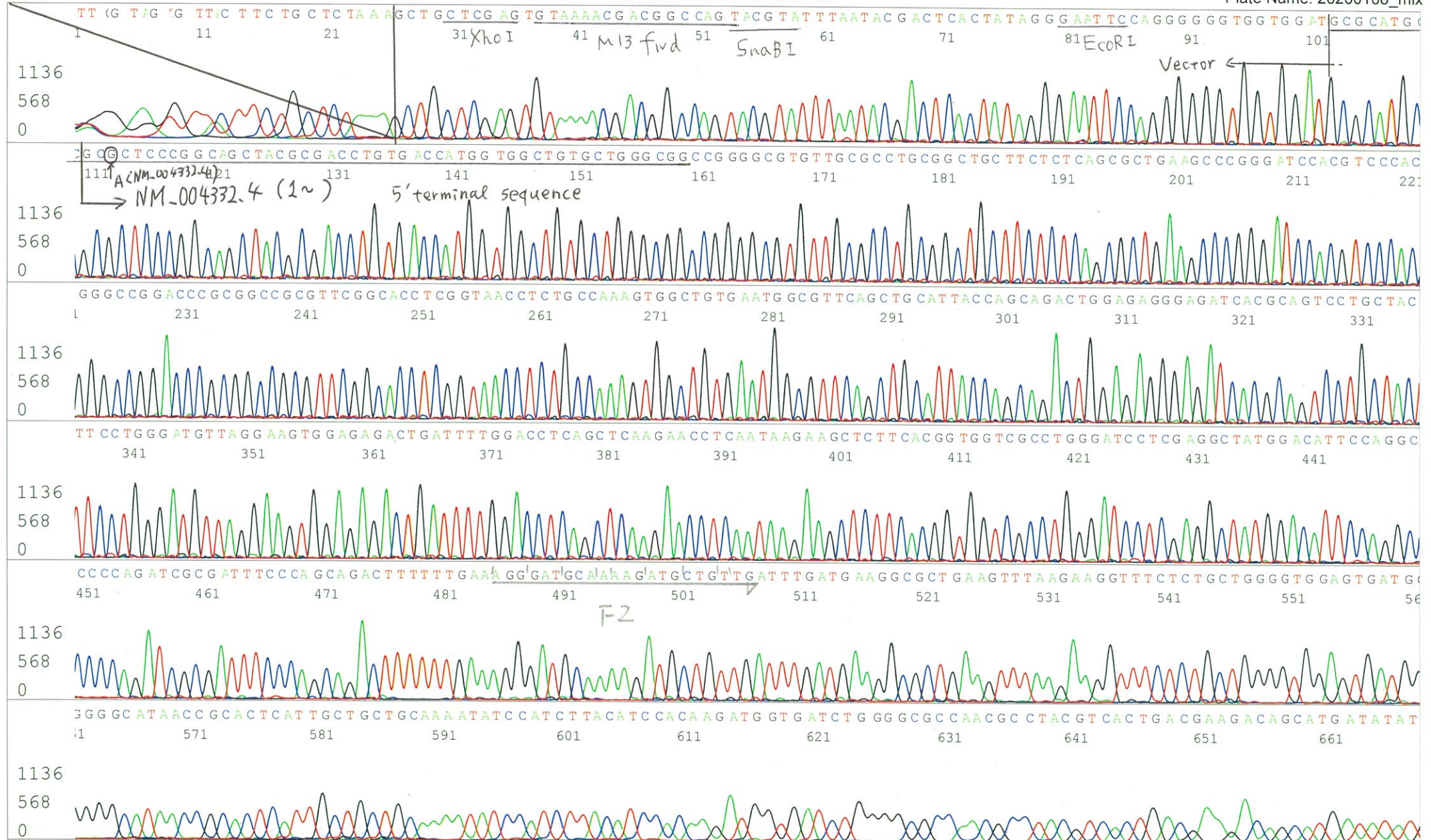
5' CTCAGTGGATGTTGCCTTTAC 3'

Pts 1812 to 8707 Pk1 Loc:1780

Spacing:10.39 Pts/Panel1350

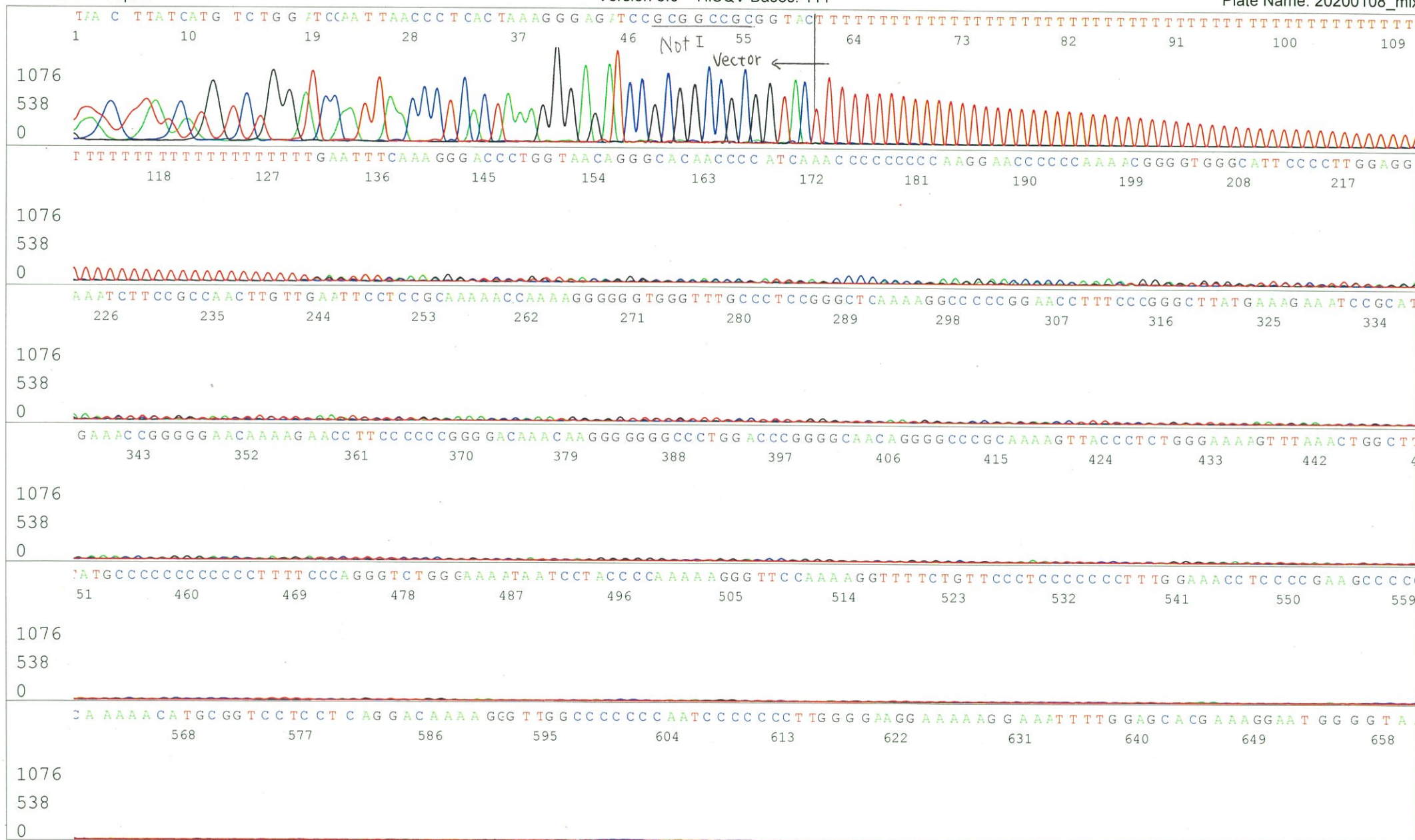
Version 6.0 HiSQV Bases: 680

Plate Name: 20200108_mix



S/N G:82 A:48 T:97 C:61
KB.bcp
KB 1.4.1.8 Cap:15

Primer B : pGCAP-R
5' GCATTCTAGTTGTGGTTTGTCC 3'



S/N G:163 A:145 T:111 C:158 Primer C : Poly(A) region primer #0
KB.bcp
KB 1.4.1.8 Cap:18 5' TTTTTTTTTTTTTTTTTTTTTT VNN 3'

