

RIKEN Clone ID : RBb02H11

Vector : pKA1U5

Lot# : 7676_B1Fg

Gene	HRH3	
RefSeq_mRNA	NM_007232.3	2692 bp

● Plasmid DNA purification

Date : 21.06.15

Culture : LB (100 ug/ml Ampicillin) 5 ml -> at 37 deg C O/N

Date : 21.06.16

Purification : QIAGEN Miniprep kit -> dH₂O 100 ul

● Digestion by restriction enzyme/Concentration calibration

Date : 21.06.16

DNA concentration (O.D.): 405 ng/ul

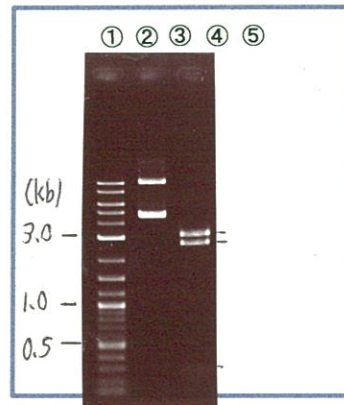
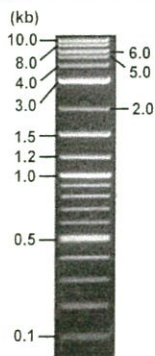
< Size of fragment expected from this clone >

DNA	0.25	ul
Enzyme (BamHI)	1	ul
Buffer H	1	ul
dH ₂ O	7.75	ul
Total	10	ul

BamHI 3.1kb (vector), 2.6, 0.3 kb (unsure)

Erectrophoresis : 1% agarose gel, 1x TAE Buffer

Marker : 2-Log DNA Ladder (NEB#N3200L)



①:Marker
②:uncut
③:BamHI

● Confirmation of the insertion sequence

Date : 21.08.25

Primer A	pGCAP-F
Primer B	pGCAP-R
Primer C	Poly(A) region
List of Sequencing Primers	http://dna.brc.riken.jp/en/NRCDhum2en.html

● Adjust plasmid DNA solution to 25 ng/ul

Date : 21.08.21

DNA (<u>405</u> ng/ul)	78.0	ul
10x TE	126.3	ul
dH ₂ O	1059.3	ul
Total	1263.6	ul

● Shipping

Conc. : 25 ng/μl, Volume : 40 μl

Conc. : ng/μl, Volume : μl

APPROVED BY :



S/N G:147 A:68 T:86 C:216
KB.bcp
KB 1.4.1.8 Cap:3

Primer A : pGCAP-F
5' CTCAGTGGATGTTGCCTTTAC 3'

