

RIKEN Clone ID : ARiS198B08

Vector : pGCAP10

Gene	NNT	
RefSeq_mRNA	NM_012343.4	6522 bp

● Plasmid DNA purification

Date : 22.12.22

Culture : LB (100 ug/ml Ampicillin) 5 ml -> at 37 deg C O/N

Date : 22.12.23

Purification : QIAGEN Miniprep kit -> dH₂O 100 ul

● Digestion by restriction enzyme/Concentration calibration

Date : 22.12.23

DNA concentration (O.D.): 338 ng/ul

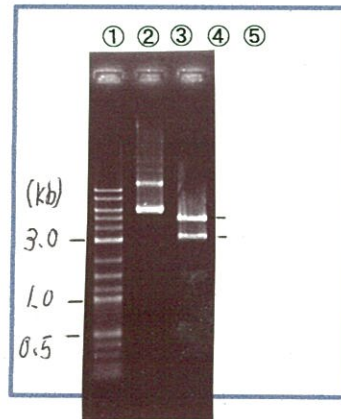
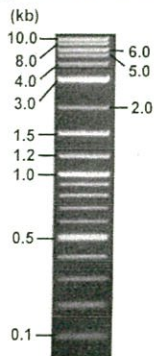
< Size of fragment expected from this clone >

DNA	0.3 ul
Enzyme (BamHI)	1 ul
Buffer H	1 ul
dH ₂ O	7.7 ul
Total	10 ul

BamHI 3.1kb (vector), 6.7 kb (unsure)

Electrophoresis : 1% agarose gel, 1x TAE Buffer

Marker : 2-Log DNA Ladder (NEB#N3200L)



①:Marker
②:uncut
③:BamHI

● Confirmation of the insertion sequence

Date : 23.03.27

● Adjust plasmid DNA solution to 25 ng/ul

Date : 23.03.30

Primer A	pGCAP-F
Primer B	pGCAP-R
Primer C	Poly(A) region
List of Sequencing Primers	http://dna.brc.riken.jp/en/NRCDhum2en.html

DNA (338 ng/ul)	78.0 ul
10x TE	105.4 ul
dH ₂ O	871.1 ul
Total	1054.5 ul

● Shipping



Conc. : 25 ng/μl, Volume : 40 μl



~~Conc. : — ng/μl, Volume : — μl~~

APPROVED BY :



S/N G:36 A:48 T:27 C:38

6607_ARiS198B08_B2LI_pGCAP_F

Jan 06,2023 02:19PM, JST

KB.bcp

Primer A : pGCAP-F

KB_3500_POP7_BDTv3.mob

Gray line indicates quality value

Jan 06,2023 02:40PM, JST

KB 1.4.1.8 Cap:5

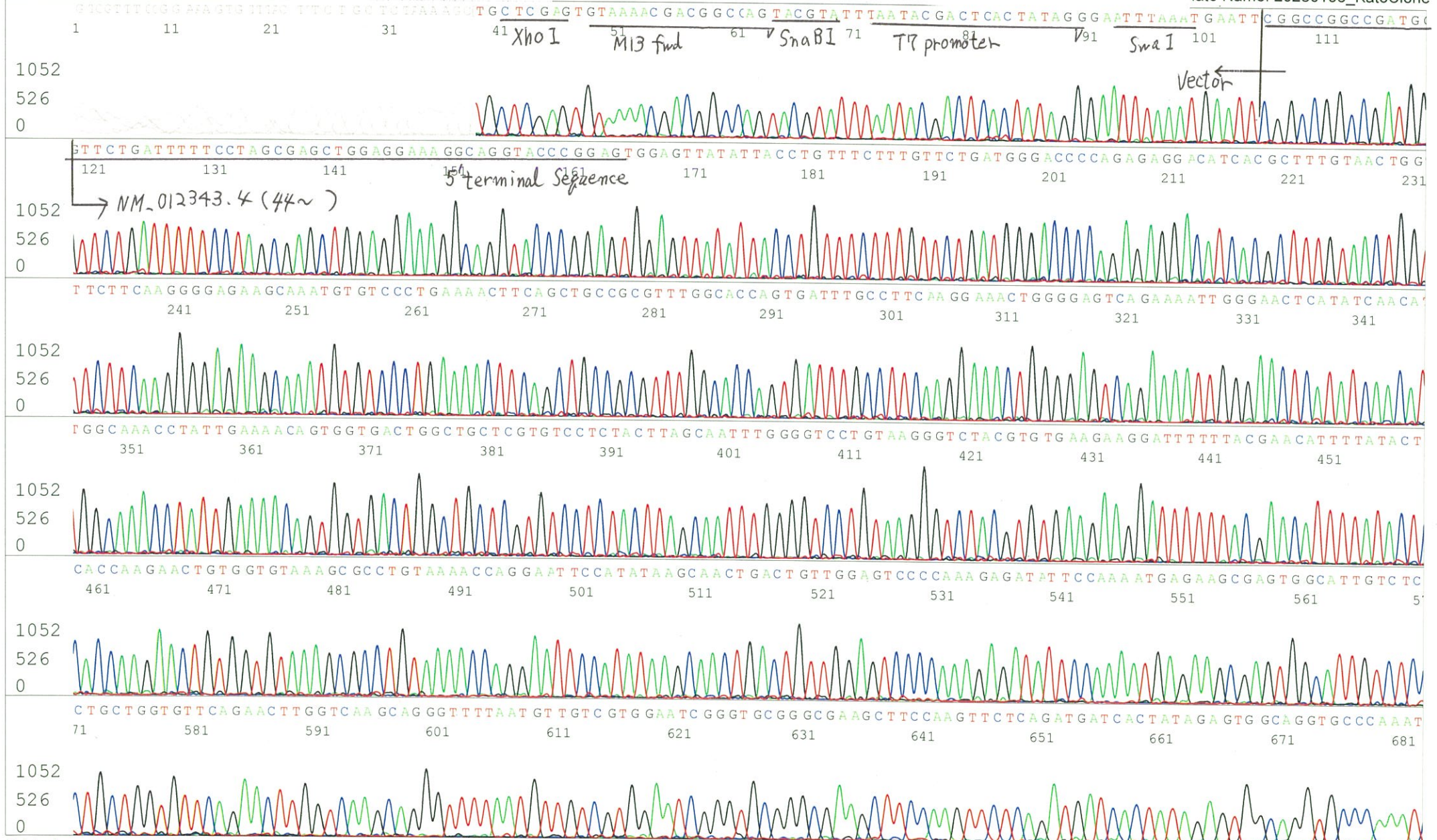
5' CTCAGTGGATGTTGCCTTTAC 3'

Pts 1446 to 11868 Pk1 Loc:1429

(QV) < 40.

Spacing:13.26 Pts/Panel1350

late Name: 20230106_KatoClone



S/N G:33 A:63 T:38 C:37
KB.bcp
KB 1.4.1.8 Cap:11

Primer C : Poly(A) region primer #0
5' TTTTTTTTTTTTTTTTTTTTTTNN 3'

6607_ARiS198B08_B2LI_GNPmixture_D02_11_ABI24
6607_ARiS198B08_B2LI_GNPmixture
KB_3500_POP7_BDTv3.mob
Pts 1438 to 11893 Pk1 Loc:1421
Version 6.0 HiSQV Bases: 799

Inst Model/Name 3500/3500 Instrument
Jan 06,2023 02:19PM, JST
Jan 06,2023 02:40PM, JST
Spacing:13.3 Pts/Panel1350
late Name: 20230106_KatoClone
Gray line indicates quality value
(QV) < 40.

