

RIKEN Clone ID :ARiS161G17

Vector : pGCAP10

Gene	GOLGB1	
Accession No.	AB371588.1	11198 bp
	<i>CDS</i>	9810 bp
	<i>5'-terminal sequence</i>	11198 bp
		1..11198

● Plasmid DNA purification

Date : 120806

Culture : LB (100 ug/ml Ampicillin) 5 ml -> at 37 deg C over night

Date : 120807

Purification : QIAGEN Miniprep kit -> dH₂O 100 ul

● Digestion by restriction enzyme/Concentration calibration

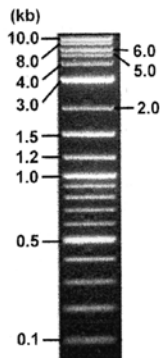
Date : 120807

DNA concentration (O.D.): 310 ng/ul

DNA	0.2	ul
Enzyme (BamHI)	1	ul
Buffer H	1	ul
dH ₂ O	7.8	ul
Total	10	ul

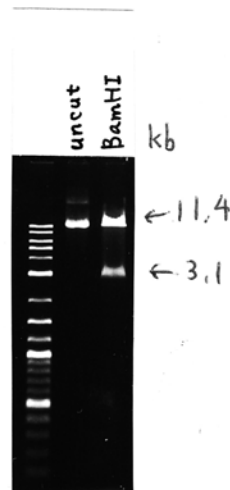
Electrophoresis : 1% agarose gel, 1x TAE Buffer

Marker : 2-Log DNA Ladder (NEB#N3200L)



<Expected size of fragment from AB371588.1 >

3138, 11399 bp



● Confirmation of the insertion sequence

Date : 120808

Primer A	pGCAP-F
Primer B	pGCAP-R
Primer C	Poly(A) region primer
List of Sequencing Primers	http://dna.brc.riken.jp/en/NRCDhum2en.html

● Adjustment of DNA concentration

Shipping amount : 40ul

Concentration at the time of preparation of plasmid DNA : 25ng/ul

Date : 120809

DNA (310 ng/ul)	86	ul
10x TE	106.6	ul
dH ₂ O	873.8	ul
Total	1066.4	ul



APPROVED BY :

<http://dna.brc.riken.jp/index.html>

