

RIKEN Clone ID : ARiS161E06

Vector : pGCAP10

Gene	EPN1	
RefSeq_mRNA	NM_013333.3	2423 bp

● Plasmid DNA purification

Date : 190903

Culture : LB (100 ug/ml Ampicillin) 5 ml -> at 37 deg C O/N

Date : 190904

Purification : QIAGEN Miniprep kit -> dH₂O 100 ul

● Digestion by restriction enzyme/Concentration calibration

Date : 190904

DNA concentration (O.D.): 270 ng/ul

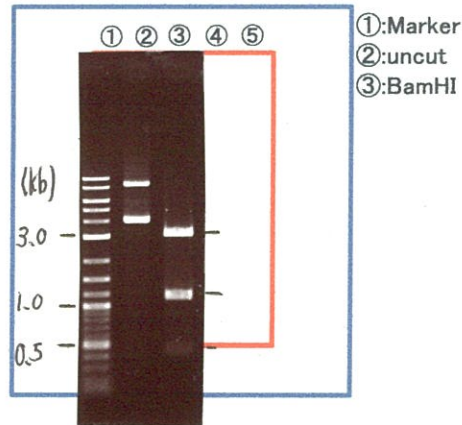
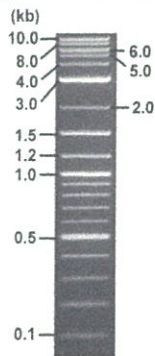
< Size of fragment expected from this clone >

DNA	0.4 ul
Enzyme (BamHI)	1 ul
Buffer H	1 ul
dH ₂ O	7.6 ul
Total	10 ul

BamHI 3.1kb (vector), 1.1, 1.1, 0.4 kb (unsure)

Erectrophoresis : 1% agarose gel, 1x TAE Buffer

Marker : 2-Log DNA Ladder (NEB#N3200L)



● Confirmation of the insertion sequence

Date : 190905

Primer A	pGCAP-F
Primer B	pGCAP-R
Primer C	Poly(A) region
List of Sequencing Primers	http://dna.brc.riken.jp/en/NRCDhum2en.html

● Adjust plasmid DNA solution to 25 ng/ul

Date : 21.04.01

DNA (<u>270</u> ng/ul)	72.0 ul
10x TE	77.7 ul
dH ₂ O	627.9 ul
Total	777.6 ul

● Shipping

Conc. : 25 ng/μl, Volume : 40 μl

~~Conc. : 25 ng/μl, Volume : 40 μl~~

APPROVED BY :



S/N G:769 A:665 T:360 C:83 Primer A : pGCAP-F

6607_ARiS161E06_A9I3_pGCAP_F

Sep 05,2019 09:35AM, JST

KB.bcp

KB_3500_POP7_BDTv3.mob

Sep 05,2019 09:50AM, JST

KB 1.4.1.8 Cap:21

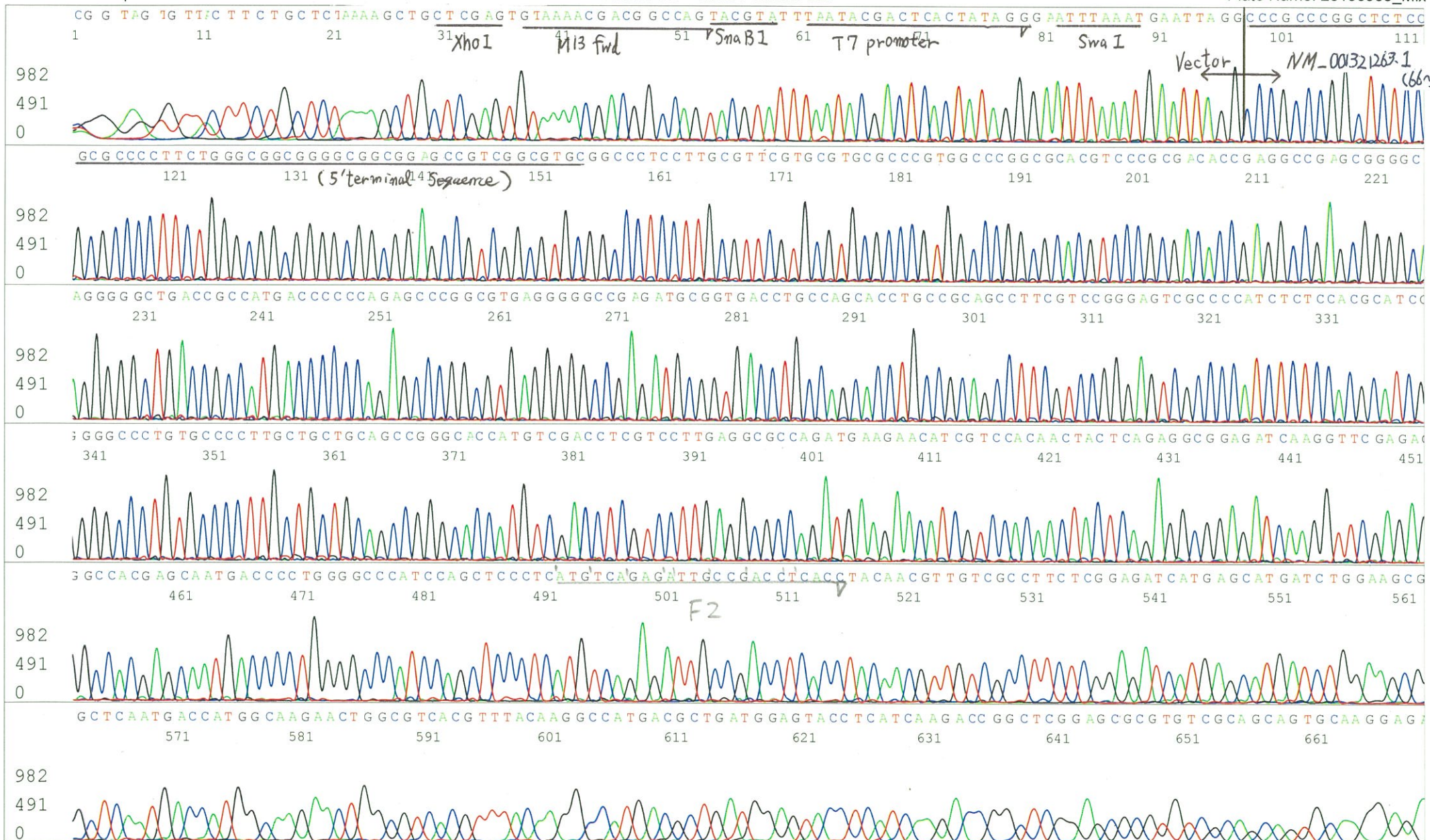
5' CTCAGTGGATGTTGCCTTTAC 3'

Pts 1690 to 8688 Pk1 Loc:1658

Spacing:10.5 Pts/Panel1350

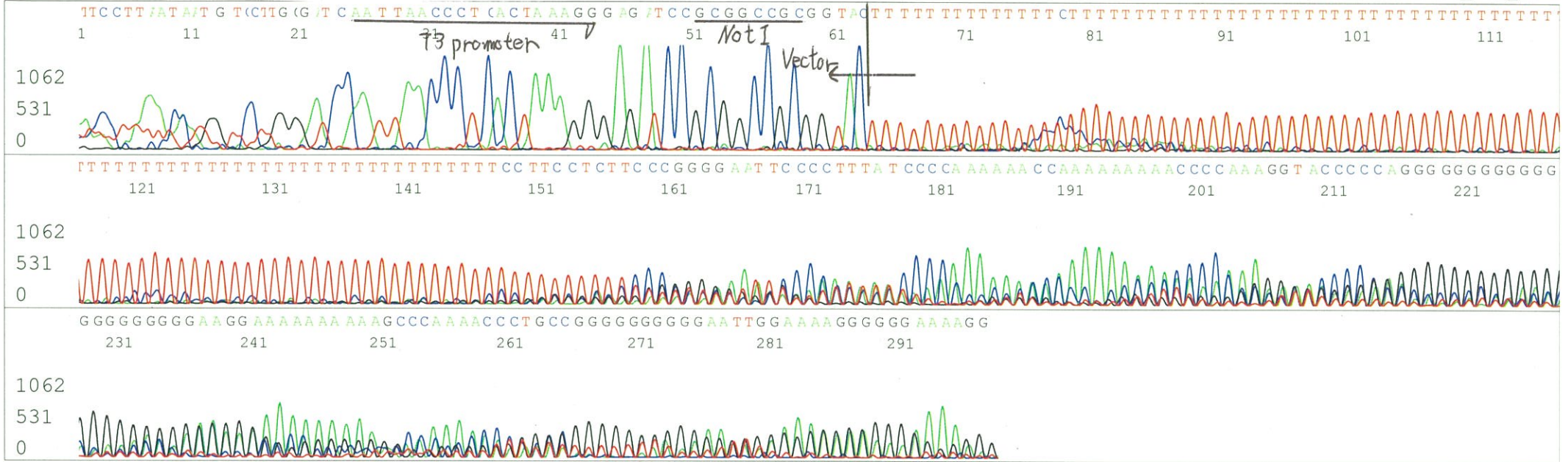
Version 6.0 HiSQV Bases: 662

Plate Name: 20190905_Mix



S/N G:18 A:10 T:13 C:8
KB.bcp
KB 1.4.1.8 Cap:7

Primer B : pGCAP-R
5' GCATTCTAGTTGTGGTTTGTCC 3'



S/N G:66 A:40 T:16 C:19

Primer C : Poly(A) region primer #0

6607_ARiS161E06_A9I3_GNPmixture

KB_3500_POP7_BDTv3.mob

Sep 06,2019 01:53PM, JST

KB.bcp

5' TTTTTTTTTTTTTTTTTTTTTTNNN 3'

Pts 1733 to 2852 Pk1 Loc:1701

Sep 06,2019 02:08PM, JST

KB 1.4.1.8 Cap:8

Version 6.0 HiSQV Bases: 76

Spacing:10.73 Pts/Panel1350

Plate Name: 20190906_Kato_Clone

