

RIKEN Clone ID : ARiS150J18

Vector : pGCAP10

Gene	ANLN		
RefSeq_mRNA	NM_018685.3	4801 bp	1..4801
	CDS	3375 bp	222..3596
	5' position		63

● Plasmid DNA purification

Date : 140820

Culture : LB (100 ug/ml Ampicillin) 5 ml -> at 37 deg C O/N

Date : 140821

Purification : QIAGEN Miniprep kit -> dH₂O ⁸⁰~~100~~ ul

● Digestion by restriction enzyme/Concentration calibration

Date : 140821

DNA concentration (O.D.): 113 ng/ul

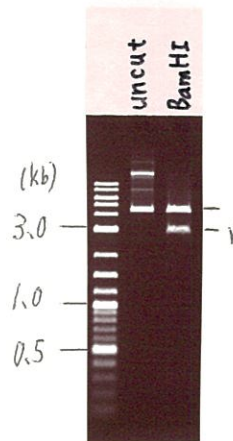
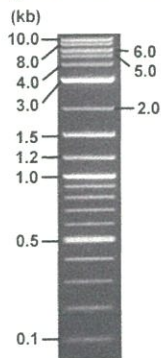
<Size of fragment expected from ARiS150J18 >

DNA	<u>0.4</u> ul
Enzyme (BamHI)	1 ul
Buffer H	1 ul
dH ₂ O	<u>7.6</u> ul
Total	10 ul

BamHI 3183(vector), 4617, 333 bp (unsure)

Electrophoresis : 1% agarose gel, 1x TAE Buffer

Marker : 2-Log DNA Ladder (NEB#N3200L)



● Confirmation of the insertion sequence

Date : 140821

Primer A	pGCAP-F
Primer B	pGCAP-R
Primer C	Poly(A) region
List of Sequencing Primers	http://dna.brc.riken.jp/en/NRCDhum2en.html

● Adjust plasmid DNA solution to 25 ng/ul

Date : 140822

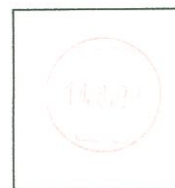
DNA (<u>113</u> ng/ul)	<u>68.0</u> ul
10x TE	<u>30.7</u> ul
dH ₂ O	<u>208.7</u> ul
Total	307.4 ul

● Shipping

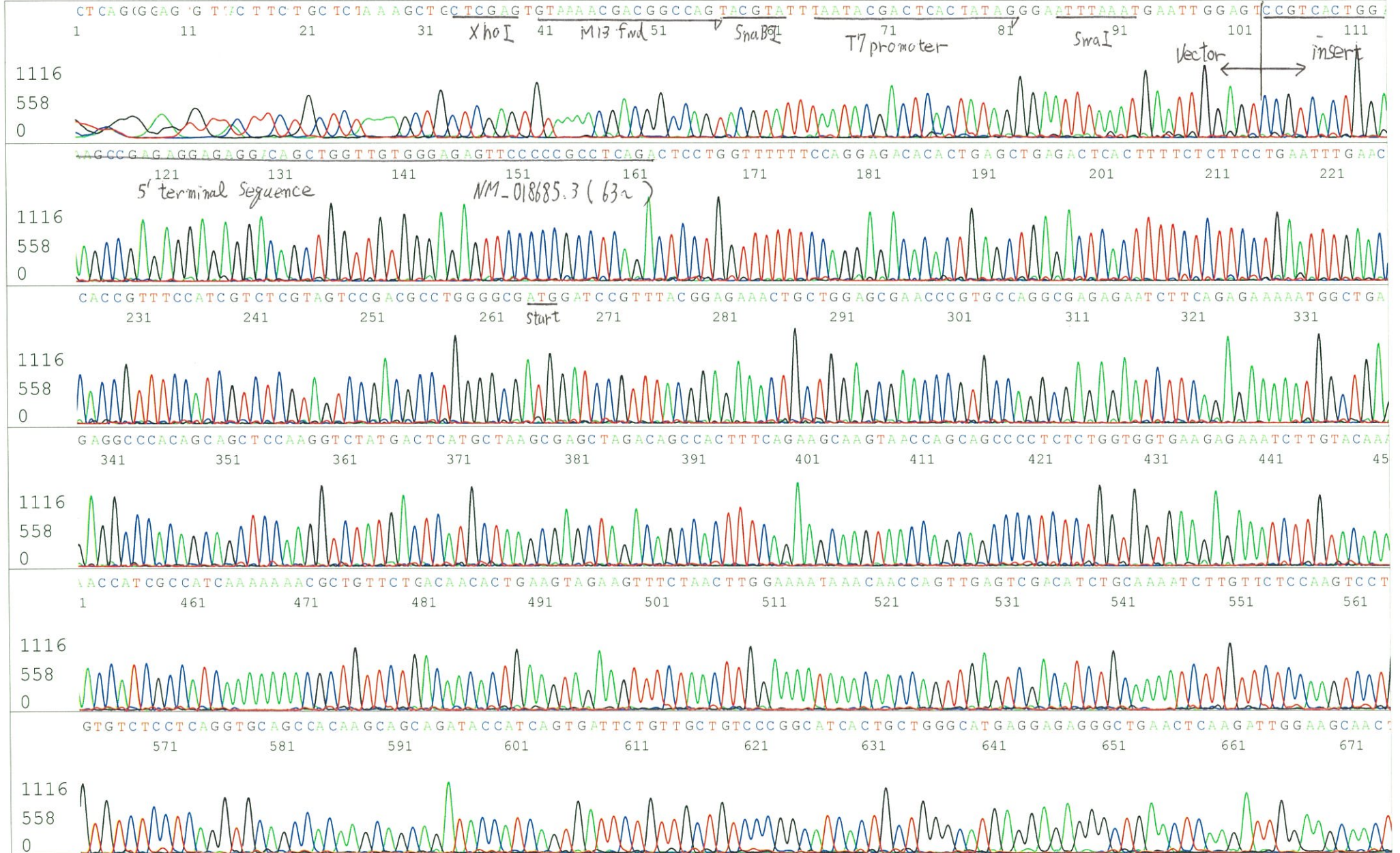
Conc. : 25 ng/μl, Volume : 40 μl

~~Conc. : 25 ng/μl, Volume : 40 μl~~

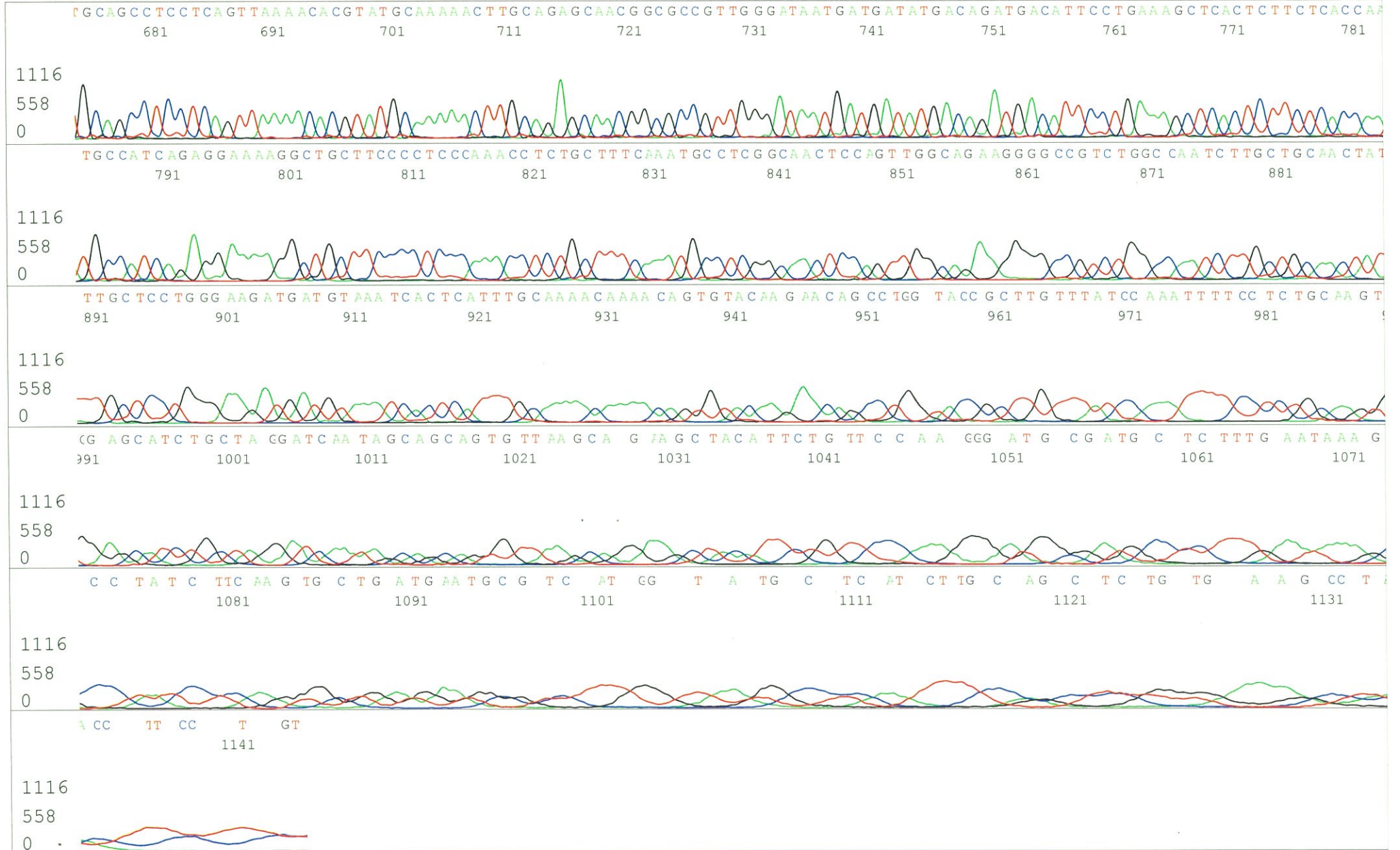
APPROVED BY :



S/N G:220 A:287 T:218 C:28 Primer A : pGCAP-F
KB.bcp
KB 1.4.1.8 Cap:17 5' CTCAGTGGATGTTGCCTTTAC 3'



S/N G:220 A:287 T:218 C:288
KB.bcp
KB 1.4.1.8 Cap:17

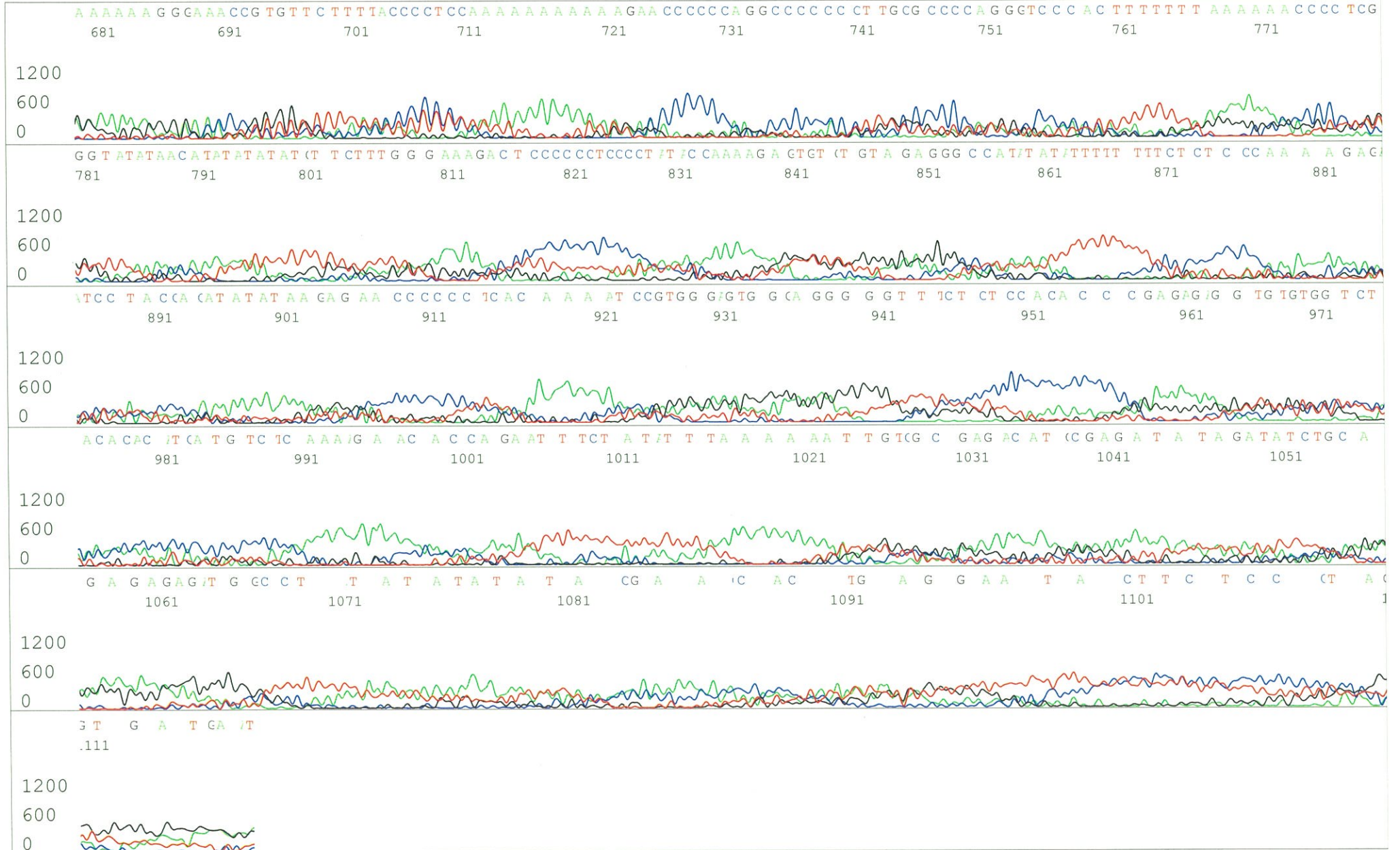


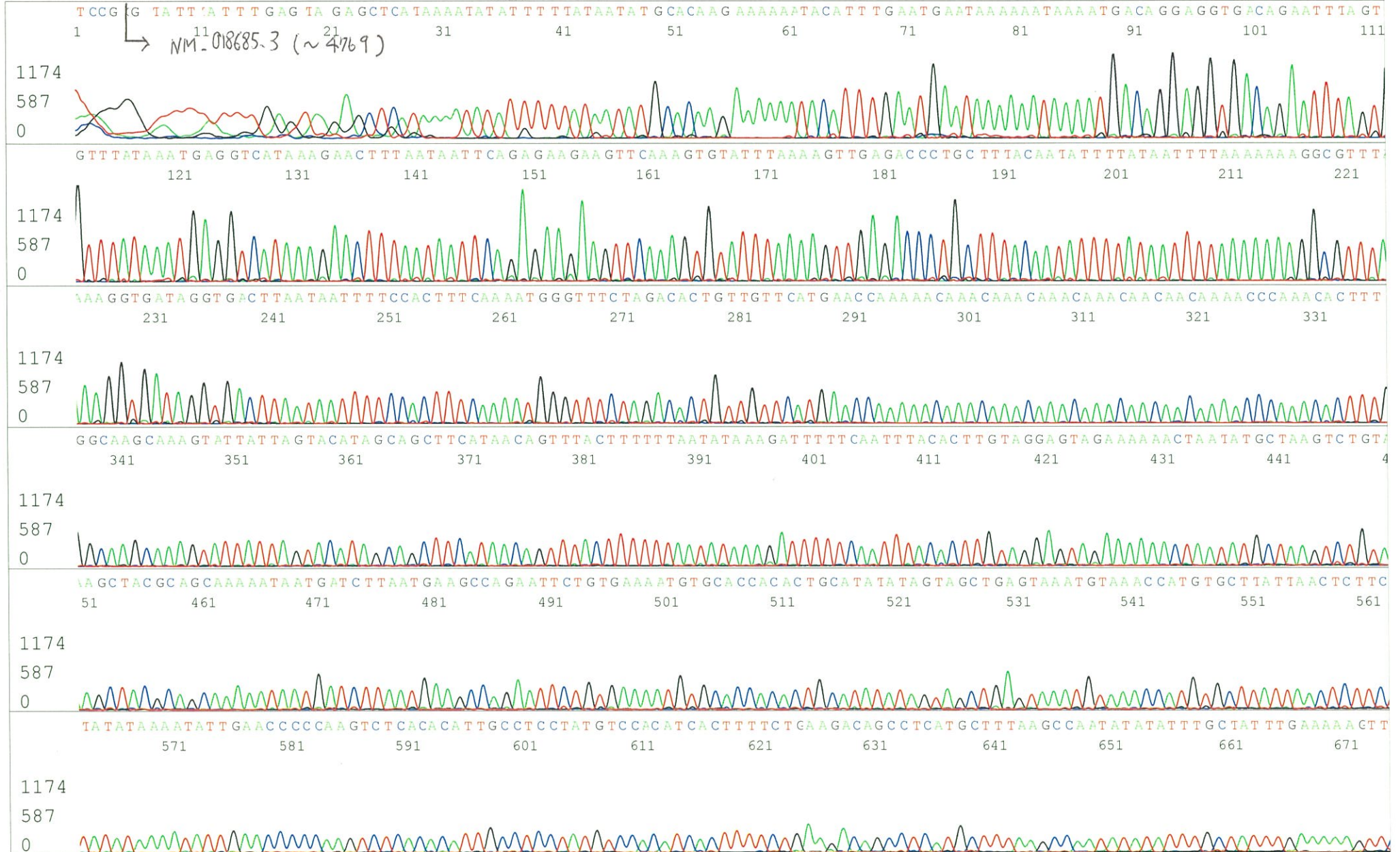
S/N G:7 A:13 T:10 C:7
KB.bcp
KB 1.4.1.8 Cap:20

Primer B : pGCAP-R
5' GCATTCTAGTTGTGGTTTGTCC 3'



S/N G:7 A:13 T:10 C:7
KB.bcp
KB 1.4.1.8 Cap:20





S/N G:69 A:124 T:61 C:41
KB.bcp
KB 1.4.1.8 Cap:23

