

RIKEN Clone ID : ARiS122022

Vector : pGCAP10

Gene	WHDC1	
RefSeq_mRNA	NM_001080435.2	3859 bp
	<i>CDS</i>	2430 bp
5' position		84

● Plasmid DNA purification

Date : 170821

Culture : LB (100 ug/ml Ampicillin) 5 ml -> at 37 deg C O/N

Date : 170822

Purification : QIAGEN Miniprep kit -> dH₂O 100 ul

● Digestion by restriction enzyme/Concentration calibration

Date : 170822

DNA concentration (O.D.): 264 ng/ul

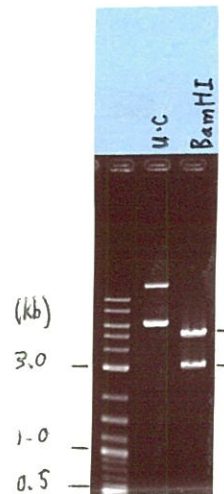
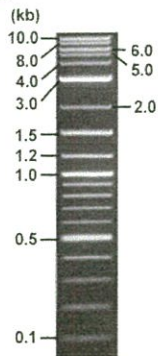
< Size of fragment expected from this clone >

DNA	<u>0.35</u> ul
Enzyme (BamHI)	1 ul
Buffer H	1 ul
dH ₂ O	<u>7.65</u> ul
Total	10 ul

BamHI 3.1kb (vector), 4.0 kb (unsure)

Electrophoresis : 1% agarose gel, 1x TAE Buffer

Marker : 2-Log DNA Ladder (NEB#N3200L)



● Confirmation of the insertion sequence

Date : 170823

Primer A	pGCAP-F
Primer B	pGCAP-R
Primer C	Poly(A) region
List of Sequencing Primers	http://dna.brc.riken.jp/en/NRCDhum2en.html

● Adjust plasmid DNA solution to 25 ng/ul

Date : _____

DNA (<u>264</u> ng/ul)	<u>84.0</u> ul
10x TE	<u>88.7</u> ul
dH ₂ O	<u>114.3</u> ul
Total	<u>887.0</u> ul

● Shipping

Conc. : 25 ng/μl, Volume : 40 μl

Conc. : ng/μl, Volume : μl

APPROVED BY :



S/N G:72 A:45 T:49 C:102

Primer A : pGCAP-F

6607_ARiS122022_A7Hf_III_pGCAP_F

KB_3500_POP7_BDTv3.mob

Gray line indicates quality value

Aug 23,2017 10:39AM, JST

KB.bcp

Pts 1723 to 8703 Pk1 Loc:1691

Aug 23,2017 10:54AM, JST

KB 1.4.1.8 Cap:4

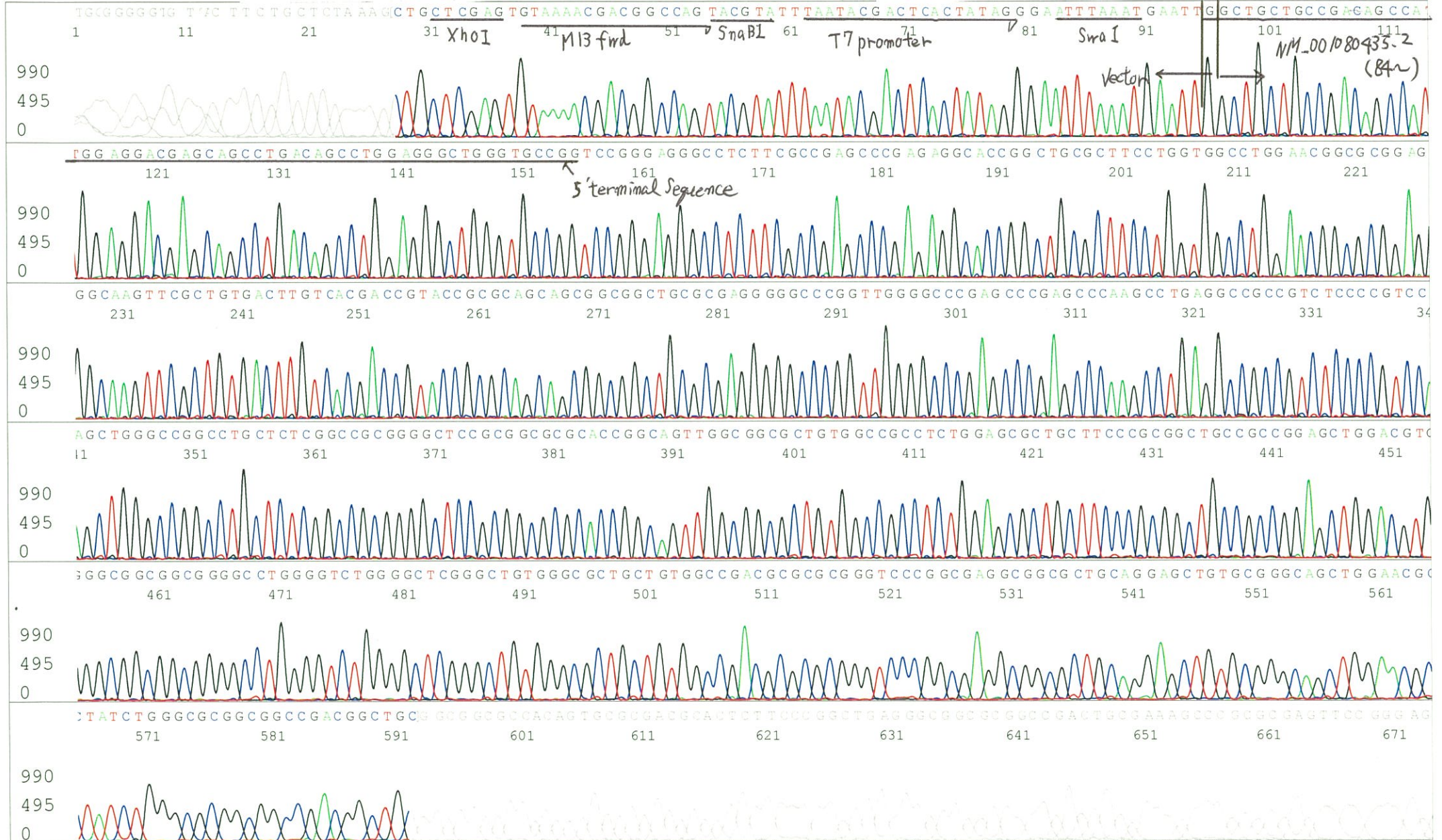
5' CTCAGTGGATGTTGCCTTTAC 3'

Version 6.0 HiSQV Bases: 709

(QV) < 40.

Spacing:10.59 Pts/Panel1350

Plate Name: 20170823_GNP



S/N G:23 A:19 T:22 C:24

Primer C : Poly(A) region primer #0

6607_ARiS122O22_A7Hf_III_GNPmixture

Gray line indicates quality value

Aug 23,2017 10:39AM, JST

KB.bcp

KB_3500_POP7_BDTv3.mob

Aug 23,2017 10:54AM, JST

KB 1.4.1.8 Cap:6

5' TTTTTTTTTTTTTTTTTTTTTNNN 3'

Pts 1721 to 8703 Pk1 Loc:1689

(QV) < 40.

Spacing:10.7 Pts/Panel1350

Version 6.0 HiSQV Bases: 708

Plate Name: 20170823_GNP

