

RIKEN Clone ID : ARIS118A16

Vector : pGCAP10

Gene	ANLN		
RefSeq_mRNA	NM_018685.3	4801 bp	1..4801
	CDS	3375 bp	222..3596
	5' position		53

● Plasmid DNA purification

Date : 140820

Culture : LB (100 ug/ml Ampicillin) 5 ml -> at 37 deg C O/N

Date : 140821

Purification : QIAGEN Miniprep kit -> dH₂O ⁸⁰~~100~~ ul

● Digestion by restriction enzyme/Concentration calibration

Date : 140821

DNA concentration (O.D.): 117 ng/ul

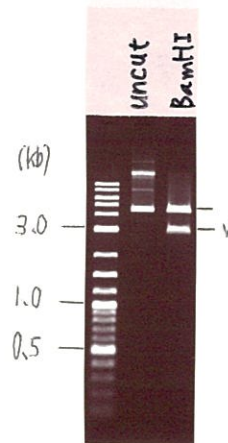
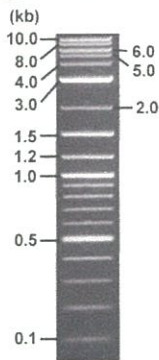
<Size of fragment expected from ARIS118A16 >

DNA	0.4 ul
Enzyme (BamHI)	1 ul
Buffer H	1 ul
dH ₂ O	7.6 ul
Total	10 ul

BamHI 3183(vector), 4617, 333 bp (unsure)

Electrophoresis : 1% agarose gel, 1x TAE Buffer

Marker : 2-Log DNA Ladder (NEB#N3200L)



● Confirmation of the insertion sequence

Date : 140821

Primer A	pGCAP-F
Primer B	pGCAP-R
Primer C	Poly(A) region
List of Sequencing Primers	http://dna.brc.riken.jp/en/NRCDhum2e.n.html

● Adjust plasmid DNA solution to 25 ng/ul

Date : 140822

DNA (117 ng/ul)	69.0 ul
10x TE	32.3 ul
dH ₂ O	221.6 ul
Total	322.9 ul

● Shipping

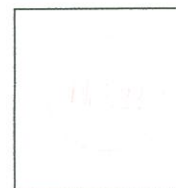


Conc. : 25 ng/μl, Volume : 40 μl

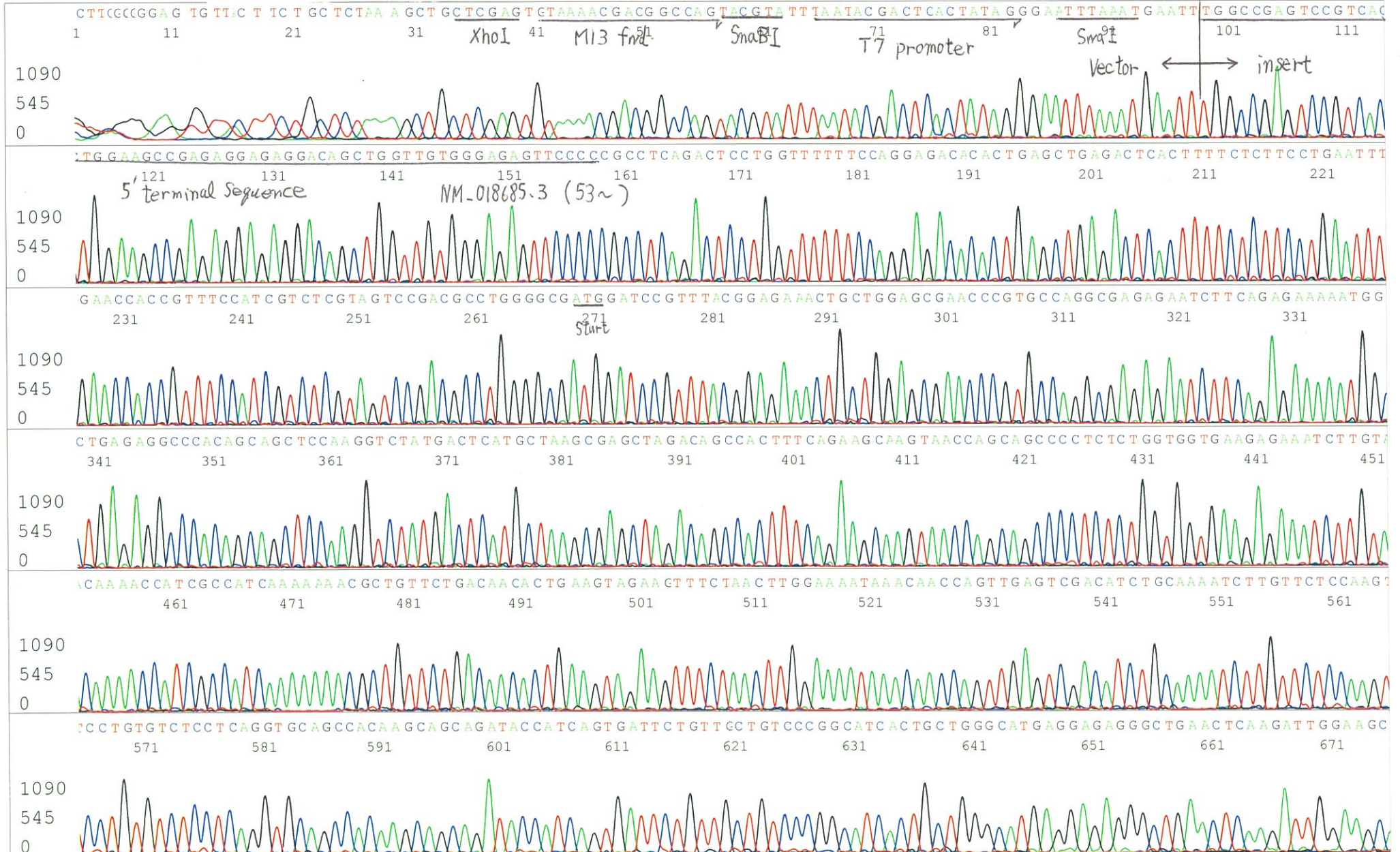


~~Conc. : 25 ng/μl, Volume : 40 μl~~

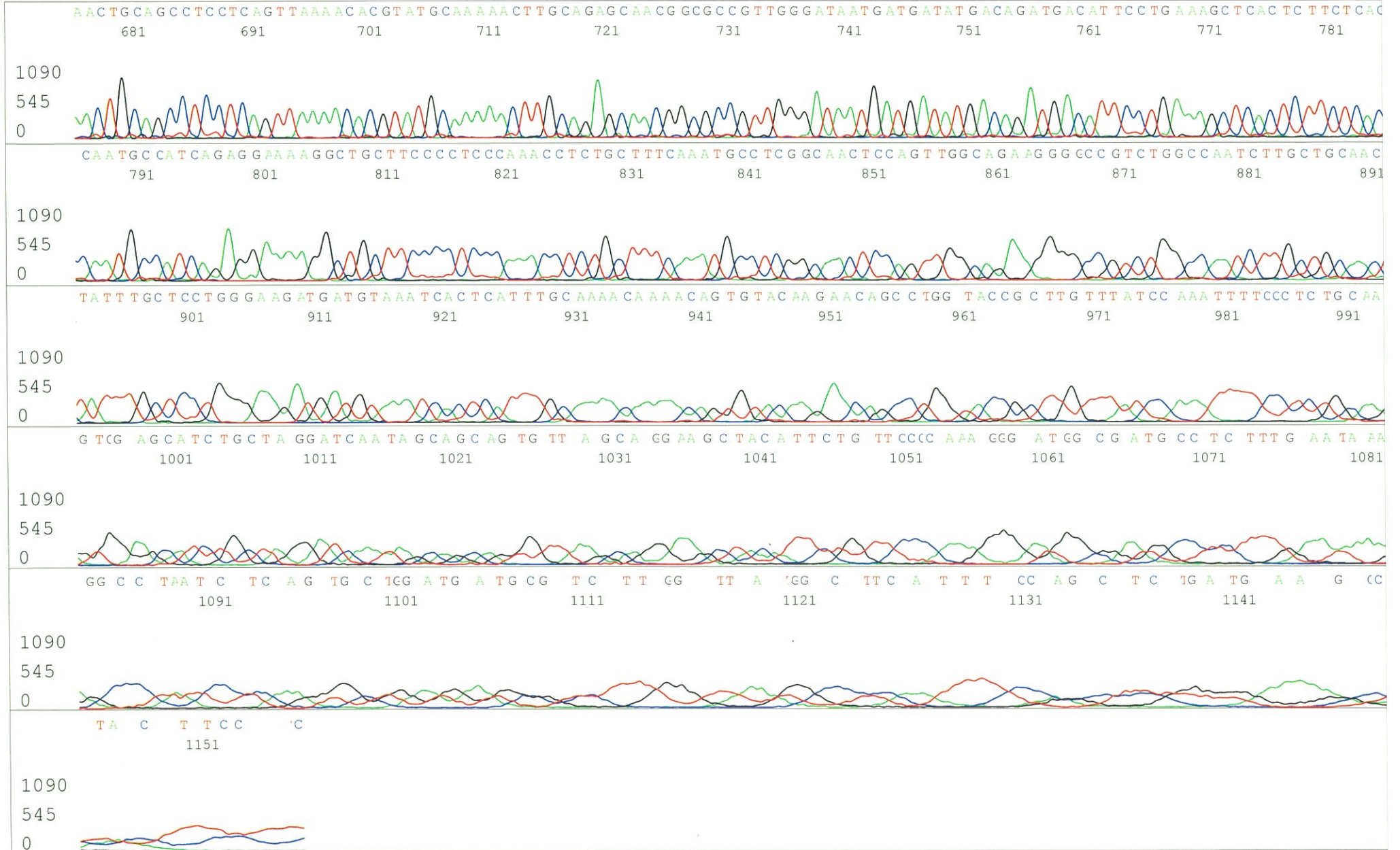
APPROVED BY :



S/N G:115 A:157 T:98 C:12
KB.bcp
KB 1.4.1.8 Cap:8
Primer A : pGCAP-F
5' CTCAGTGGATGTTGCCTTTAC 3'

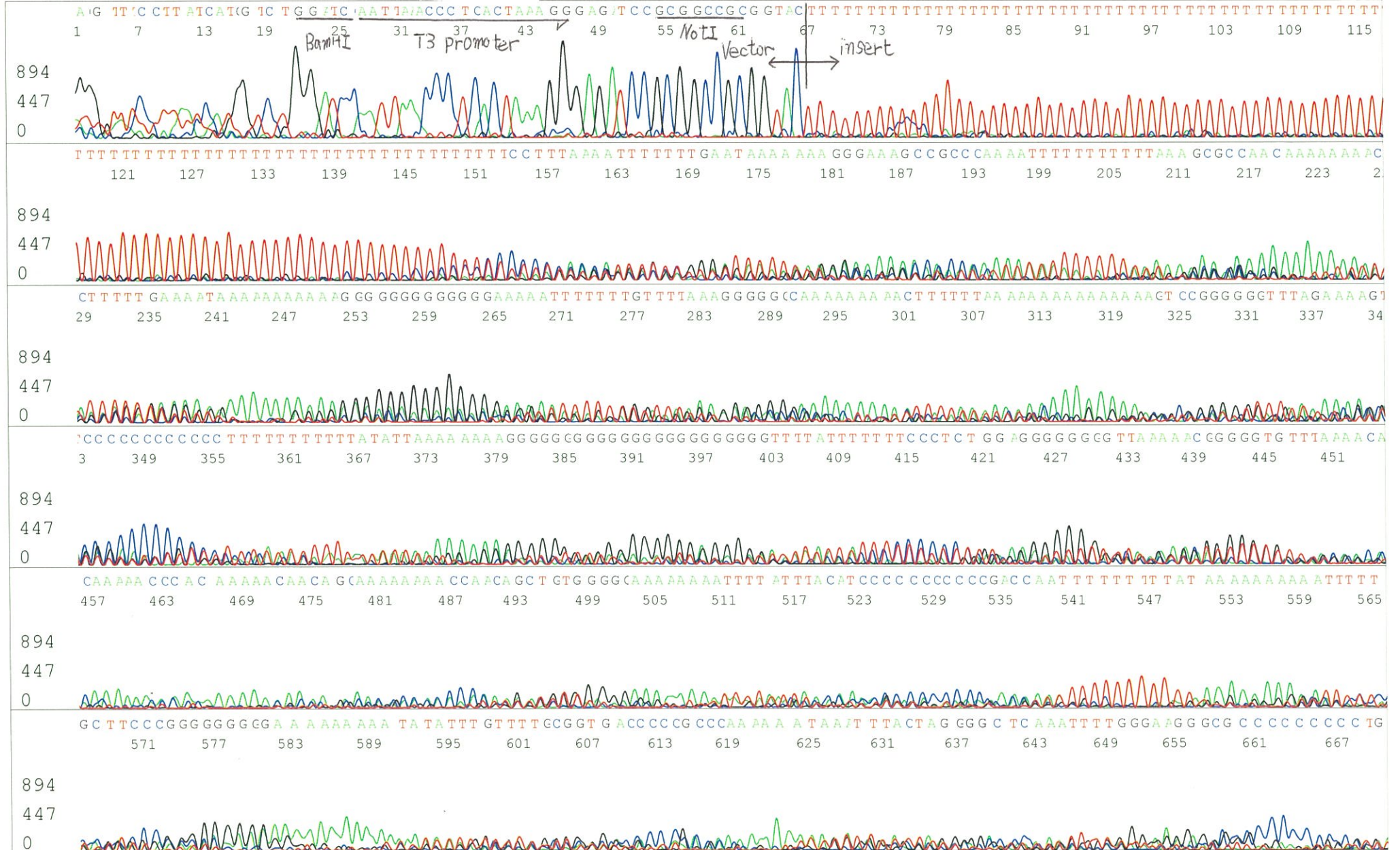


S/N G:115 A:157 T:98 C:129
KB.bcp
KB 1.4.1.8 Cap:8

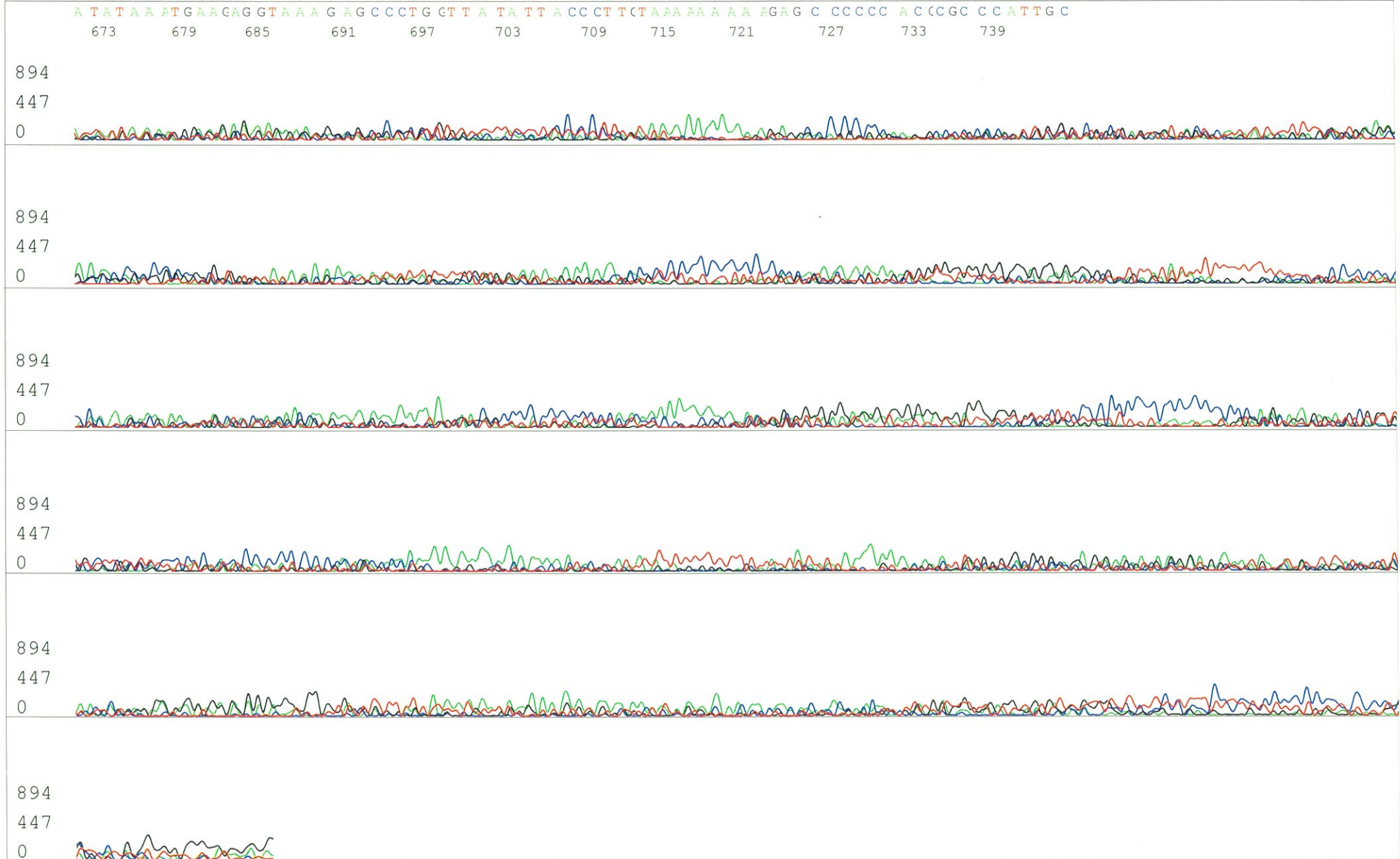


S/N G:6 A:8 T:7 C:5
KB.bcp
KB 1.4.1.8 Cap:11

Primer B : pGCAP-R
5' GCATTCTAGTTGTGGTTTGTCC 3'

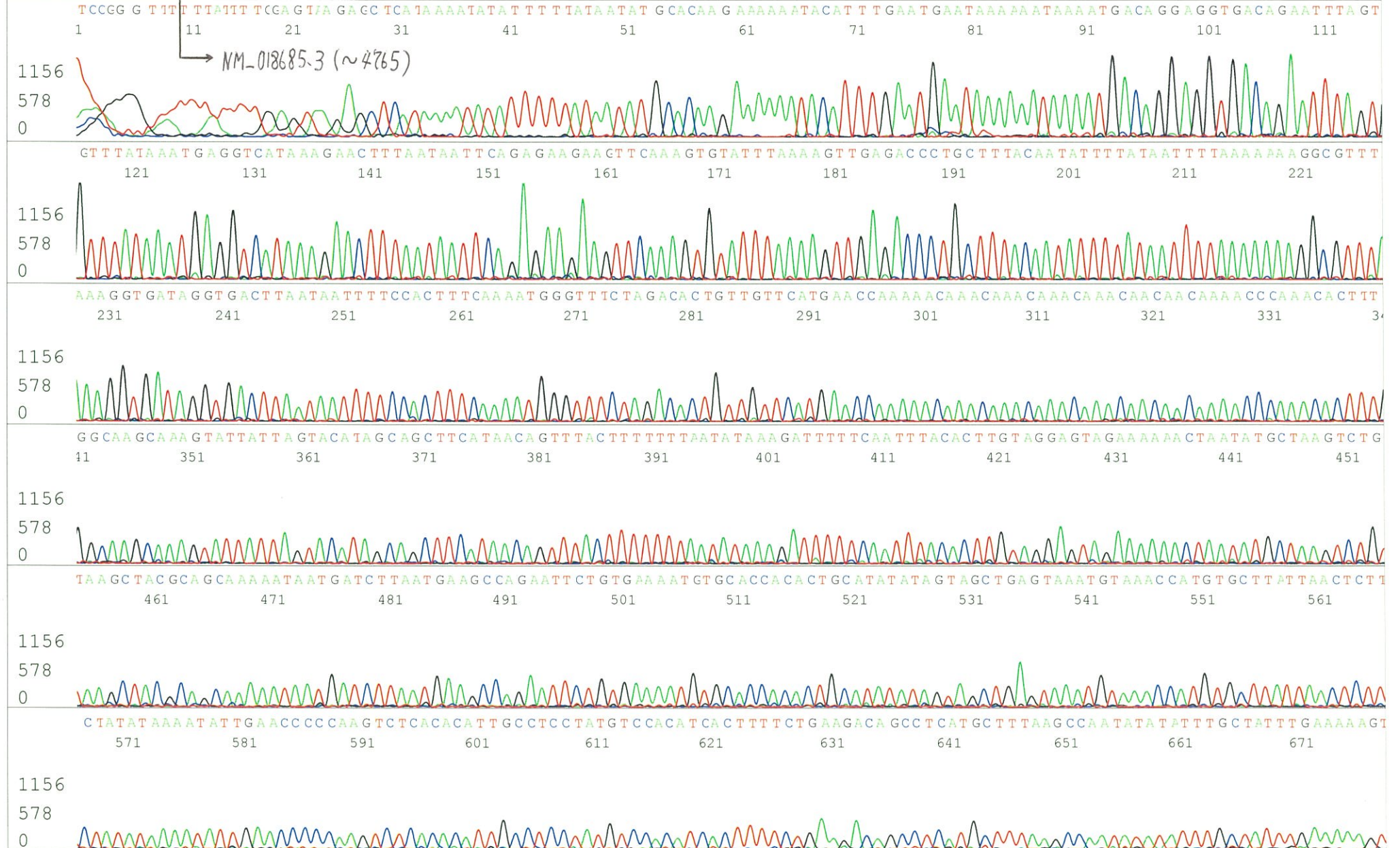


S/N G:6 A:8 T:7 C:5
KB.bcp
KB 1.4.1.8 Cap:11



S/N G:18 A:25 T:14 C:11
 KB.bcp
 KB 1.4.1.8 Cap:14

Primer C : Poly(A) region primer #0
 5' TTTTTTTTTTTTTTTTTTTTTTNNN 3'



S/N G:18 A:25 T:14 C:11
KB.bcp
KB 1.4.1.8 Cap:14

