

RIKEN Clone ID : ARiS096J12

Vector : pGCAP10

| | | |
|-------------|-------------|---------|
| Gene | BRD9 | |
| RefSeq_mRNA | NM_023924.5 | 2665 bp |

● Plasmid DNA purification

Date : 20.11.25

Culture : LB (100 ug/ml Ampicillin) 5 ml -> at 37 deg C O/N

Date : 20.11.26

Purification : QIAGEN Miniprep kit -> dH₂O 100 ul

● Digestion by restriction enzyme/Concentration calibration

Date : 20.11.26

DNA concentration (O.D.): 364 ng/ul

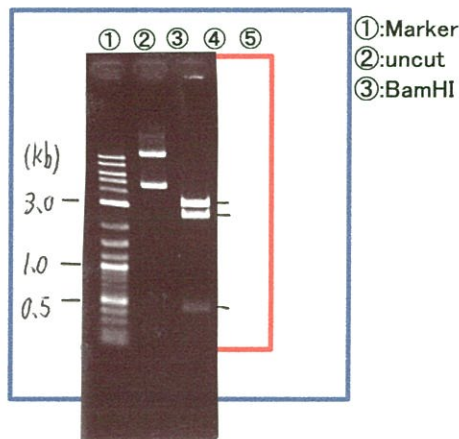
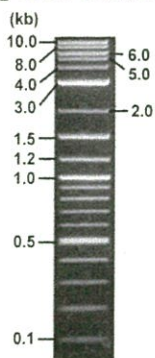
< Size of fragment expected from this clone >

| | |
|-------------------|---------------|
| DNA | <u>0.3</u> ul |
| Enzyme (BamHI) | 1 ul |
| Buffer H | 1 ul |
| dH ₂ O | <u>7.7</u> ul |
| Total | 10 ul |

BamHI 3.1kb (vector), 2.4, 0.4 kb (unsure)

Electrophoresis : 1% agarose gel, 1x TAE Buffer

Marker : 2-Log DNA Ladder (NEB#N3200L)



● Confirmation of the insertion sequence

Date : 20.12.01

| | |
|----------------------------|---|
| Primer A | pGCAP-F |
| Primer B | pGCAP-R |
| Primer C | Poly(A) region |
| List of Sequencing Primers | http://dna.brc.riken.jp/en/NRCDCHum2en.html |

● Adjust plasmid DNA solution to 25 ng/ul

Date : 20.12.01

| | |
|-------------------------|-------------------------|
| DNA (<u>364</u> ng/ul) | <u>90.0</u> ul |
| 10x TE | <u>131.0</u> ul |
| dH ₂ O | <u>1089.4</u> ul |
| Total | <u>1310.4</u> ul |

● Shipping



Conc. : 25 ng/μl, Volume : 40 μl



Conc. : ng/μl, Volume : μl

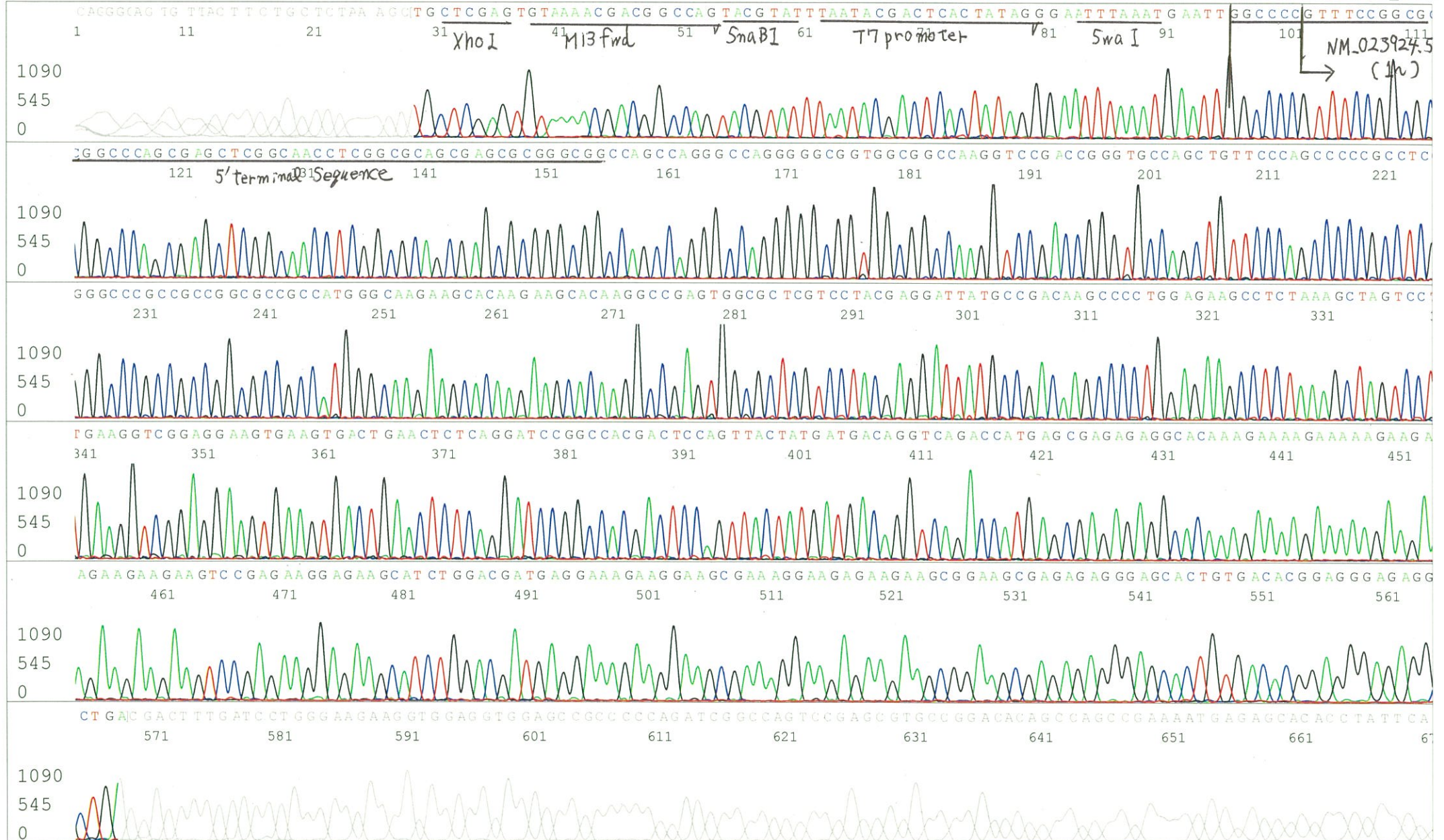


APPROVED BY :

S/N G:378 A:363 T:169 C:314
KB.bcp
KB 1.4.1.8 Cap:3

Primer A : pGCAP-F
5' CTCAGTGGATGTTGCCTTTAC 3'

Gray line indicates quality value
(QV) < 40.



S/N G:15 A:13 T:16 C:11

Primer B : pGCAP-R

6607_ARiS096J12_B0Ko_pGCAP_R

KB_3500_POP7_BDTv3.mob

Gray line indicates quality value

Nov 27, 2020 09:36AM, JST

KB.bcp

5' GCATTCTAGTTGTGGTTTGTCC 3'

Pts 1864 to 8707 Pk1 Loc:1832

(QV) < 40.

Nov 27, 2020 09:51AM, JST

KB 1.4.1.8 Cap:6

Version 6.0 HiSQV Bases: 90

Spacing:11.37 Pts/Panel1350

Plate Name: 20201127_MGE

