

**RIKEN Clone ID : ARiS096G17**

Vector : pGCAP10

Gene	EHD1	
RefSeq_mRNA	NM_006795.3	3533 bp

● Plasmid DNA purification

Date : 171031

Culture : LB (100 ug/ml Ampicillin) 5 ml -> at 37 deg C O/N

Date : 171101

Purification : QIAGEN Miniprep kit -> dH<sub>2</sub>O 100 ul

● Digestion by restriction enzyme/Concentration calibration

Date : 171101

DNA concentration (O.D.): 129 ng/ul

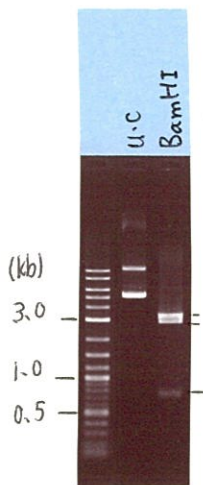
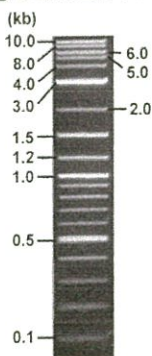
< Size of fragment expected from this clone >

DNA	0.7 ul
Enzyme (BamHI)	1 ul
Buffer H	1 ul
dH <sub>2</sub> O	7.3 ul
<b>Total</b>	<b>10 ul</b>

BamHI 3.1kb (vector), 2.8, 0.9 kb (unsure)

Electrophoresis : 1% agarose gel, 1x TAE Buffer

Marker : 2-Log DNA Ladder (NEB#N3200L)



● Confirmation of the insertion sequence

Date : 171102

Primer A	pGCAP-F
Primer B	pGCAP-R
Primer C	Poly(A) region
List of Sequencing Primers	<a href="http://dna.brc.riken.jp/en/NRCDCHum2en.html">http://dna.brc.riken.jp/en/NRCDCHum2en.html</a>

● Adjust plasmid DNA solution to 25 ng/ul

Date : 171106

DNA ( <u>129</u> ng/ul)	85.0 ul
10x TE	43.8 ul
dH <sub>2</sub> O	310.6 ul
<b>Total</b>	<b>438.6 ul</b>

● Shipping



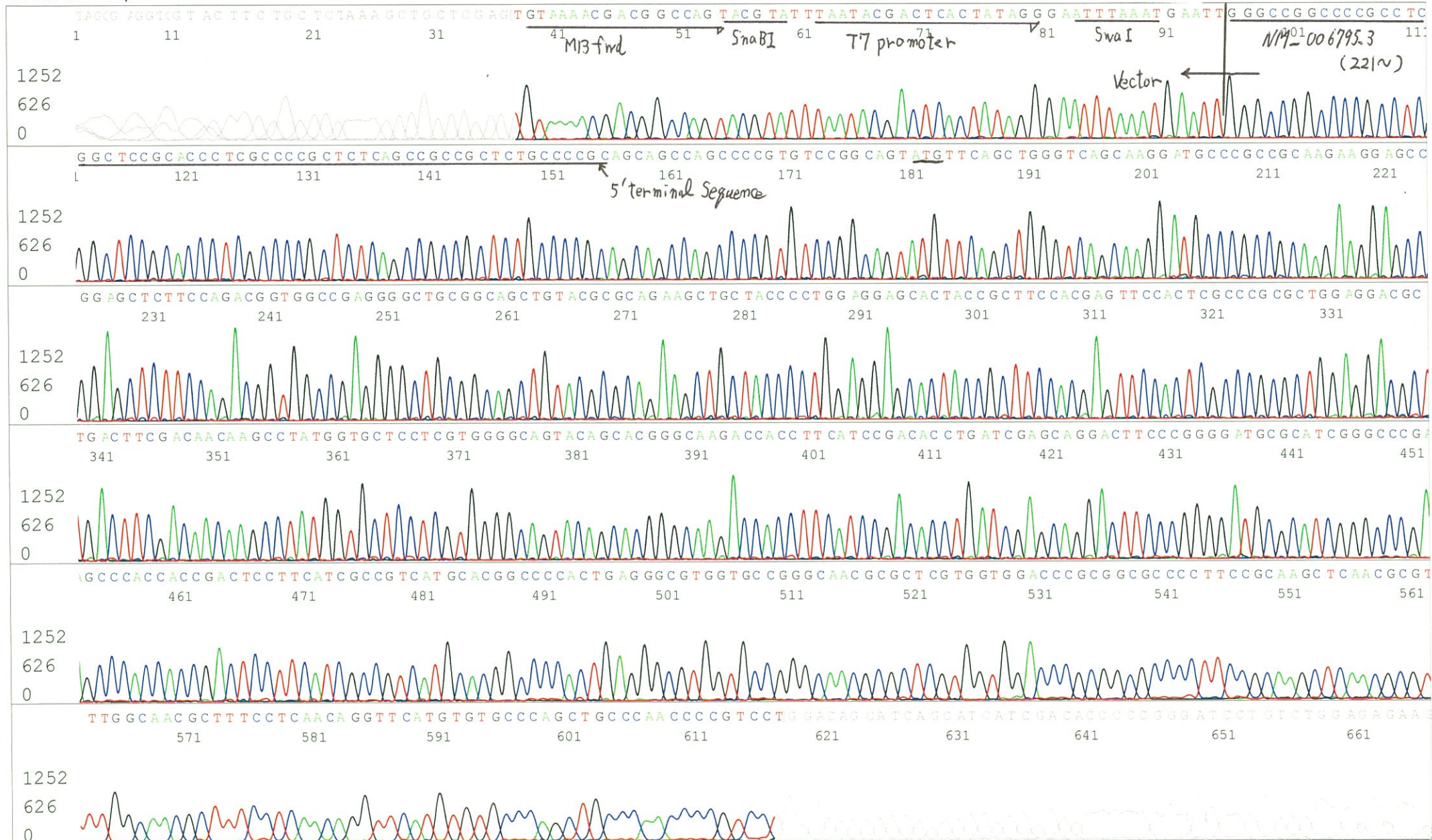
Conc. : 25 ng/μl, Volume : 40 μl



Conc. : \_\_\_ ng/μl, Volume : \_\_\_ μl

APPROVED BY :







S/N G:27 A:27 T:28 C:40

Primer B : pGCAP-R

6607\_ARiS096G17\_A7Jr\_2\_pGCAP\_R

KB\_3500\_POP7\_BDTv3.mob

Gray line indicates quality value

Nov 02,2017 10:32AM, JST

KB.bcp

Pts 1789 to 8667 Pk1 Loc:1757

(QV) < 40.

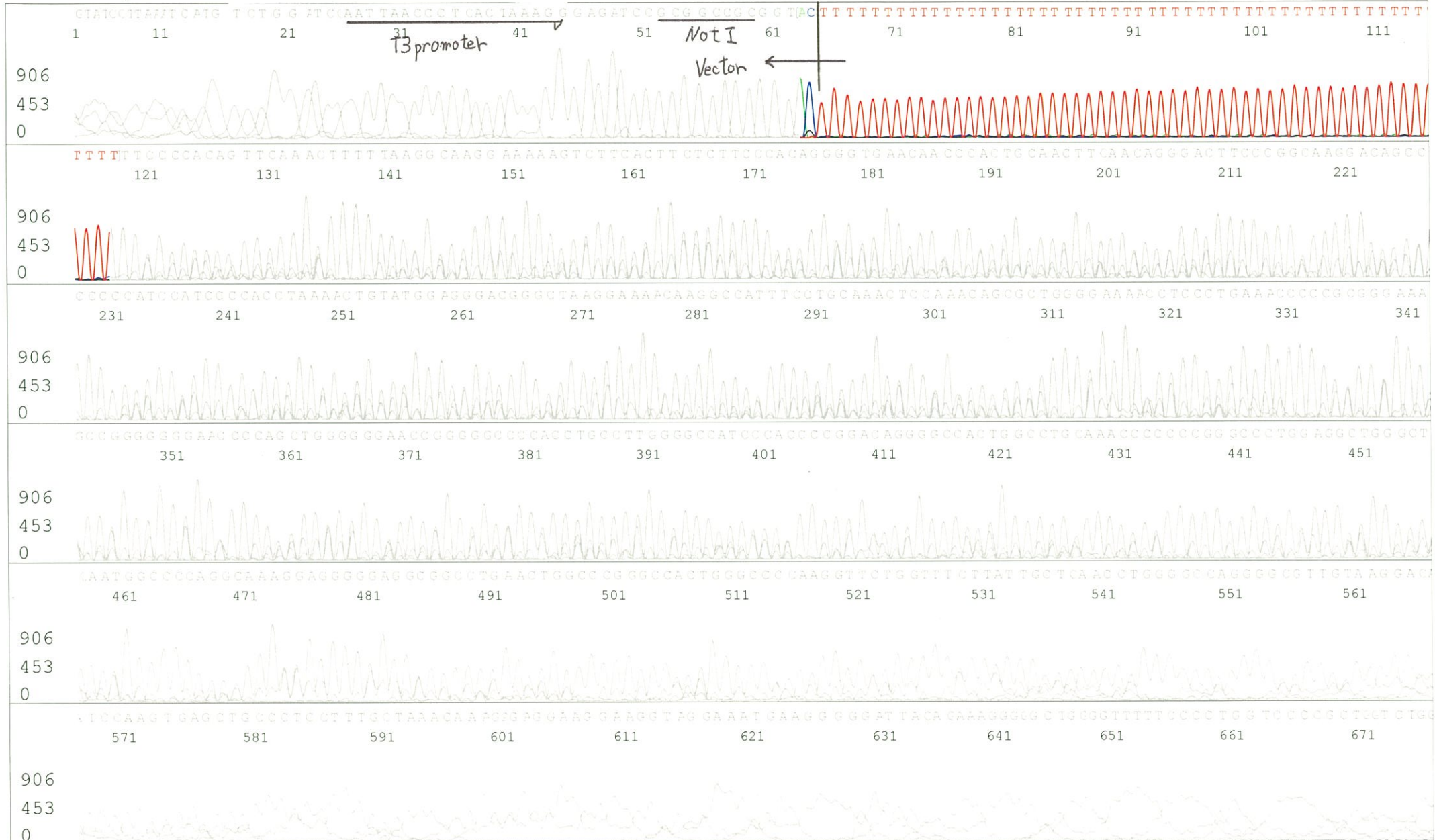
Nov 02,2017 10:47AM, JST

KB 1.4.1.8 Cap:2

5' GCATTCTAGTTGTGGTTTGTCC 3'

Version 6.0 HiSQV Bases: 370

Plate Name: 20171102\_GNP



S/N G:23 A:21 T:19 C:31

Primer C : Poly(A) region primer #0

6607\_ARiS096G17\_A7Jr\_2\_GNPmixture

KB\_3500\_POP7\_BDTv3.mob

Gray line indicates quality value

Nov 02,2017 10:32AM, JST

KB.bcp

Pts 1781 to 8622 Pk1 Loc:1749

Nov 02,2017 10:47AM, JST

KB 1.4.1.8 Cap:3

5' TTTTTTTTTTTTTTTTTTTTTTNNN 3'

Version 6.0 HiSQV Bases: 689

(QV) < 40.

Spacing:10.3 Pts/Panel1350

Plate Name: 20171102\_GNP

