

**RIKEN Clone ID : ARiS088J02**

Vector : pGCAP10

Gene	HNRPA2B1	
RefSeq_mRNA	NM_002137.3	3666 bp
	CDS	1026 bp
5' position		48

● Plasmid DNA purification

Date : 160526

Culture : LB (100 ug/ml Ampicillin) 5 ml -> at 37 deg C O/N

Date : 160527

Purification : QIAGEN Miniprep kit -> dH<sub>2</sub>O 100 ul

● Digestion by restriction enzyme/Concentration calibration

Date : 160527

DNA concentration (O.D.): 91 ng/ul

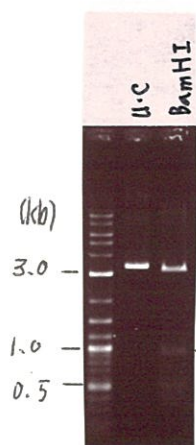
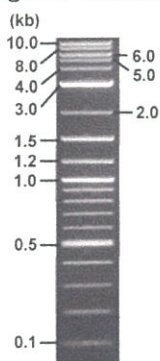
< Size of fragment expected from this clone >

DNA	1 ul
Enzyme (BamHI)	1 ul
Buffer H	1 ul
dH <sub>2</sub> O	7 ul
<b>Total</b>	<b>10 ul</b>

BamHI 3.1kb (vector), 3.4, 0.46 kb (unsure)

Electrophoresis : 1% agarose gel, 1x TAE Buffer

Marker : 2-Log DNA Ladder (NEB#N3200L)



● Confirmation of the insertion sequence

Date : 160530

Primer A	pGCAP-F
Primer B	pGCAP-R
Primer C	Poly(A) region
List of Sequencing Primers	<a href="http://dna.brc.riken.jp/en/NRCDhum2en.html">http://dna.brc.riken.jp/en/NRCDhum2en.html</a>

● Adjust plasmid DNA solution to 25 ng/ul

Date : \_\_\_\_\_

DNA ( <u>91</u> ng/ul)	ul	82
10x TE	ul	29.8
dH <sub>2</sub> O	ul	186.6
<b>Total</b>	<b>ul</b>	<b>298.4</b>

● Shipping

Conc. : 25 ng/μl, Volume : 40 μl

Conc. : \_\_\_ ng/μl, Volume : \_\_\_ μl

APPROVED BY :

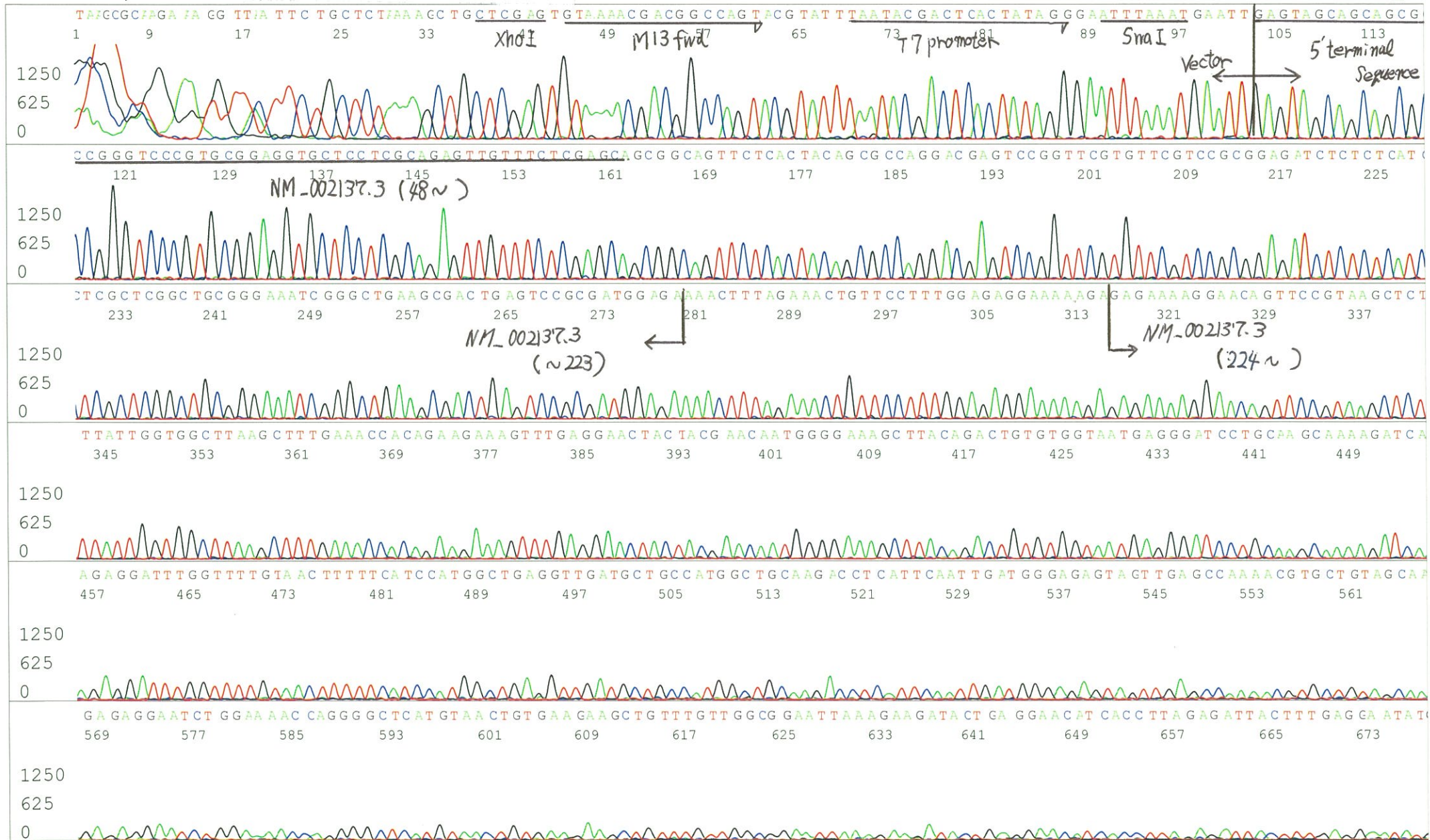


S/N G:18 A:13 T:12 C:11  
KB.bcp  
KB 1.4.1.8 Cap:9

Primer A : pGCAP-F  
5' CTCAGTGGATGTTGCCTTTAC 3'

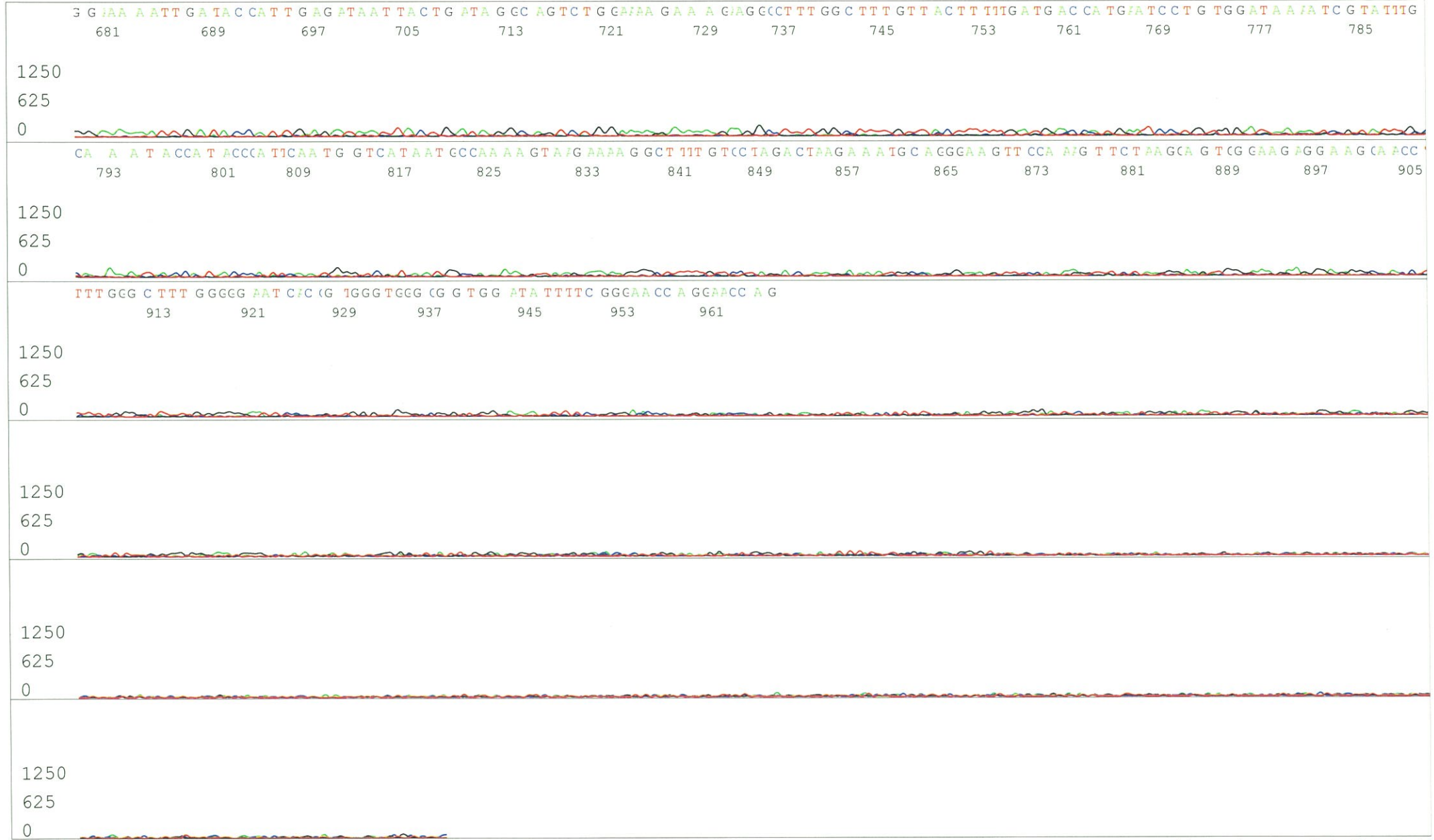
6607\_ARIS088J02\_A6Eq\_pGCAP\_F\_C03\_09  
6607\_ARIS088J02\_A6Eq\_pGCAP\_F  
KB\_3500\_POP7\_BDTv3.mob  
Pts 1448 to 13122 PK1 Loc:1425  
Version 6.0 HiSQV Bases: 799

Inst Model/Name 3500/3500 Instrument  
May 30,2016 10:18AM, JST  
May 30,2016 10:57AM, JST  
Spacing:11.62 Pts/Panel1350  
Plate Name: 20160530\_mix





S/N G:18 A:13 T:12 C:11  
KB.bcp  
KB 1.4.1.8 Cap:9





S/N G:105 A:84 T:146 C:82  
KB.bcp  
KB 1.4.1.8 Cap:12





S/N G:246 A:142 T:155 C:133

Primer C : Poly(A) region primer #0

6607\_ARiS088J02\_A6Eq\_GNPmixture

May 30,2016 10:18AM, JST

KB.bcp

KB\_3500\_POP7\_BDTv3.mob

May 30,2016 10:57AM, JST

KB 1.4.1.8 Cap:15

5' TTTTTTTTTTTTTTTTTTTTTTNNN 3'

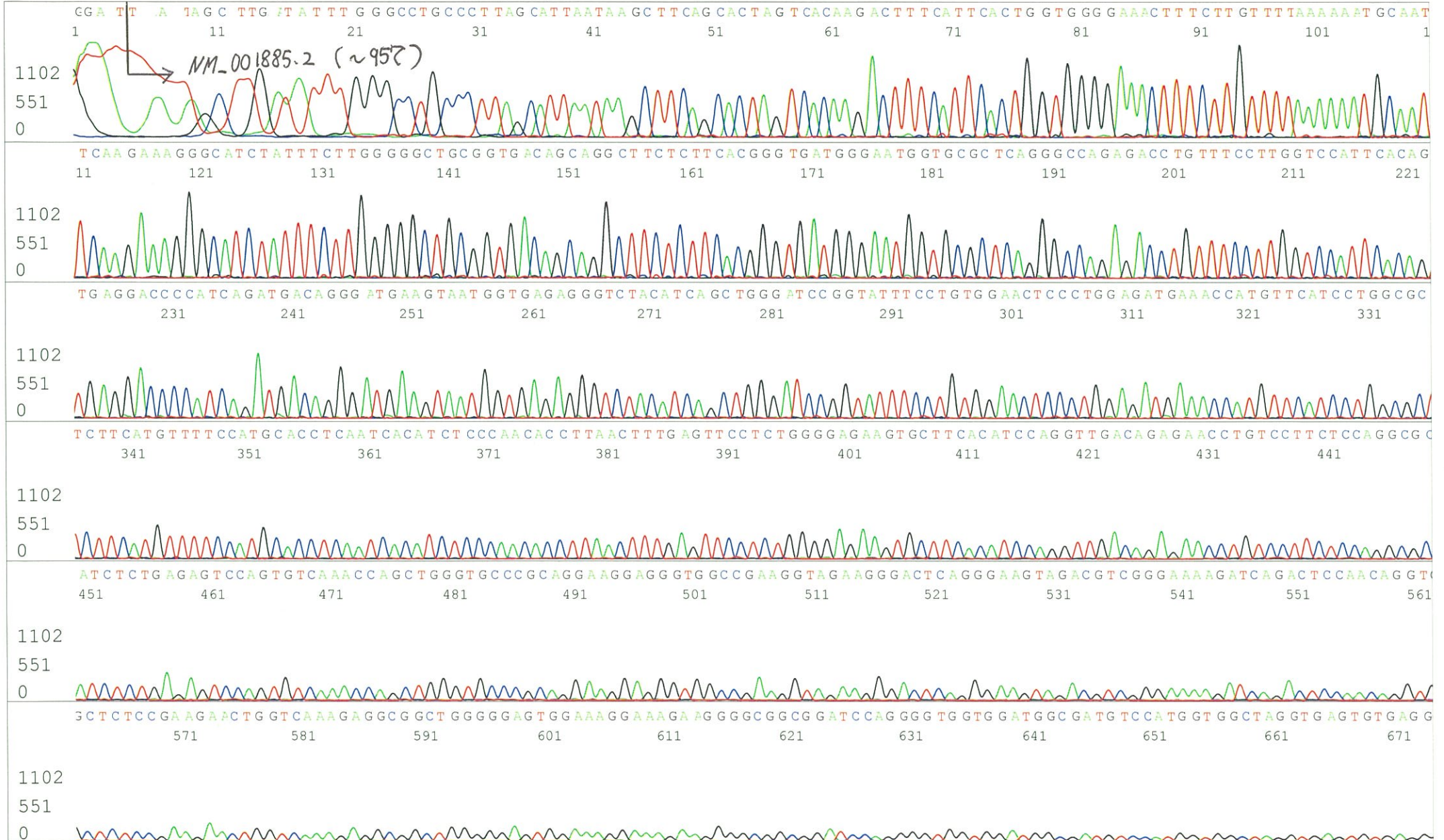
Pts 1446 to 9195 Pk1 Loc:1423

Version 6.0 HiSQV Bases: 673

NM\_002137.3 (does not match)

Spacing:11.6 Pts/Panel1350

Plate Name: 20160530\_mix



S/N G:246 A:142 T:155 C:133  
KB.bcp  
KB 1.4.1.8 Cap:15

