

RIKEN Clone ID : ARiS023B08

Vector : pGCAP10

Gene	LAMB2	
RefSeq_mRNA	NM_002292.4	5692 bp

● Plasmid DNA purification

Date : 20.11.17

Culture : LB (100 ug/ml Ampicillin) 5 ml -> at 37 deg C O/N

Date : 20.11.18

Purification : QIAGEN Miniprep kit -> dH₂O 100 ul

● Digestion by restriction enzyme/Concentration calibration

Date : 20.11.18

DNA concentration (O.D.): 352 ng/ul

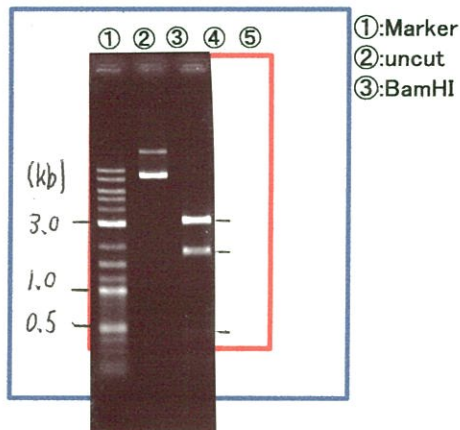
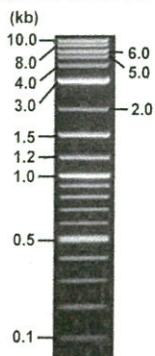
< Size of fragment expected from this clone >

DNA	<u>0.3</u> ul
Enzyme (BamHI)	1 ul
Buffer H	1 ul
dH ₂ O	<u>7.7</u> ul
Total	10 ul

BamHI 3.1kb (vector), 2.6, 1.6, 1.4, 0.3, 0.1 kb (unsure)

Erectrophoresis : 1% agarose gel, 1x TAE Buffer

Marker : 2-Log DNA Ladder (NEB#N3200L)



● Confirmation of the insertion sequence

Date : 20.11.30

Primer A	pGCAP-F
Primer B	pGCAP-R
Primer C	Poly(A) region
List of Sequencing Primers	http://dna.brc.riken.jp/en/NRCDhum2en.html

● Adjust plasmid DNA solution to 25 ng/ul

Date : 20.12.01

DNA (<u>352</u> ng/ul)	<u>92.0</u> ul
10x TE	<u>129.5</u> ul
dH ₂ O	<u>1073.8</u> ul
Total	<u>1295.3</u> ul

● Shipping



Conc. : 25 ng/μl, Volume : 40 μl



Conc. : ~~ng/μl~~, Volume : ~~μl~~

APPROVED BY :



