

C17

**RIKEN Clone ID : ARiS013J16**

Vector : pGCAP10

Gene	CLASP1	
RefSeq_mRNA	NM_015282.3	8078 bp

● Plasmid DNA purification

Date : 2020.01.14

Culture : LB (100 ug/ml Ampicillin) 5 ml -> at 37 deg C O/N

Date : 2020.01.17

Purification : QIAGEN Miniprep kit -> dH<sub>2</sub>O 100 ul

● Digestion by restriction enzyme/Concentration calibration

Date : 2020.01.17

DNA concentration (O.D.): 393 ng/ul

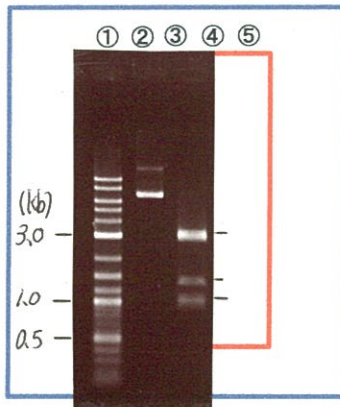
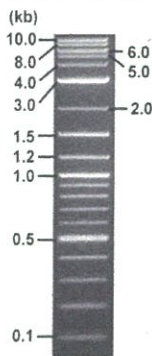
< Size of fragment expected from this clone >

DNA	0.25 ul
Enzyme (BamHI)	1 ul
Buffer H	1 ul
dH <sub>2</sub> O	7.75 ul
<b>Total</b>	<b>10 ul</b>

BamHI 3.1kb (vector), 4.7, 1.4, 1.1, 1.1 kb (unsure)

Electrophoresis : 1% agarose gel, 1x TAE Buffer

Marker : 2-Log DNA Ladder (NEB#N3200L)



①:Marker  
②:uncut  
③:BamHI

● Confirmation of the insertion sequence

Date : 2021.03.04

Primer A	pGCAP-F
Primer B	pGCAP-R
Primer C	Poly(A) region
List of Sequencing Primers	<a href="http://dna.brc.riken.jp/en/NRCDhum2en.html">http://dna.brc.riken.jp/en/NRCDhum2en.html</a>

● Adjust plasmid DNA solution to 25 ng/ul

Date : 2021.03.30

DNA ( 393 ng/ul)	72.0 ul
10x TE	113.1 ul
dH <sub>2</sub> O	946.7 ul
<b>Total</b>	<b>1131.8 ul</b>

● Shipping



Conc. : 25 ng/μl, Volume : 40 μl



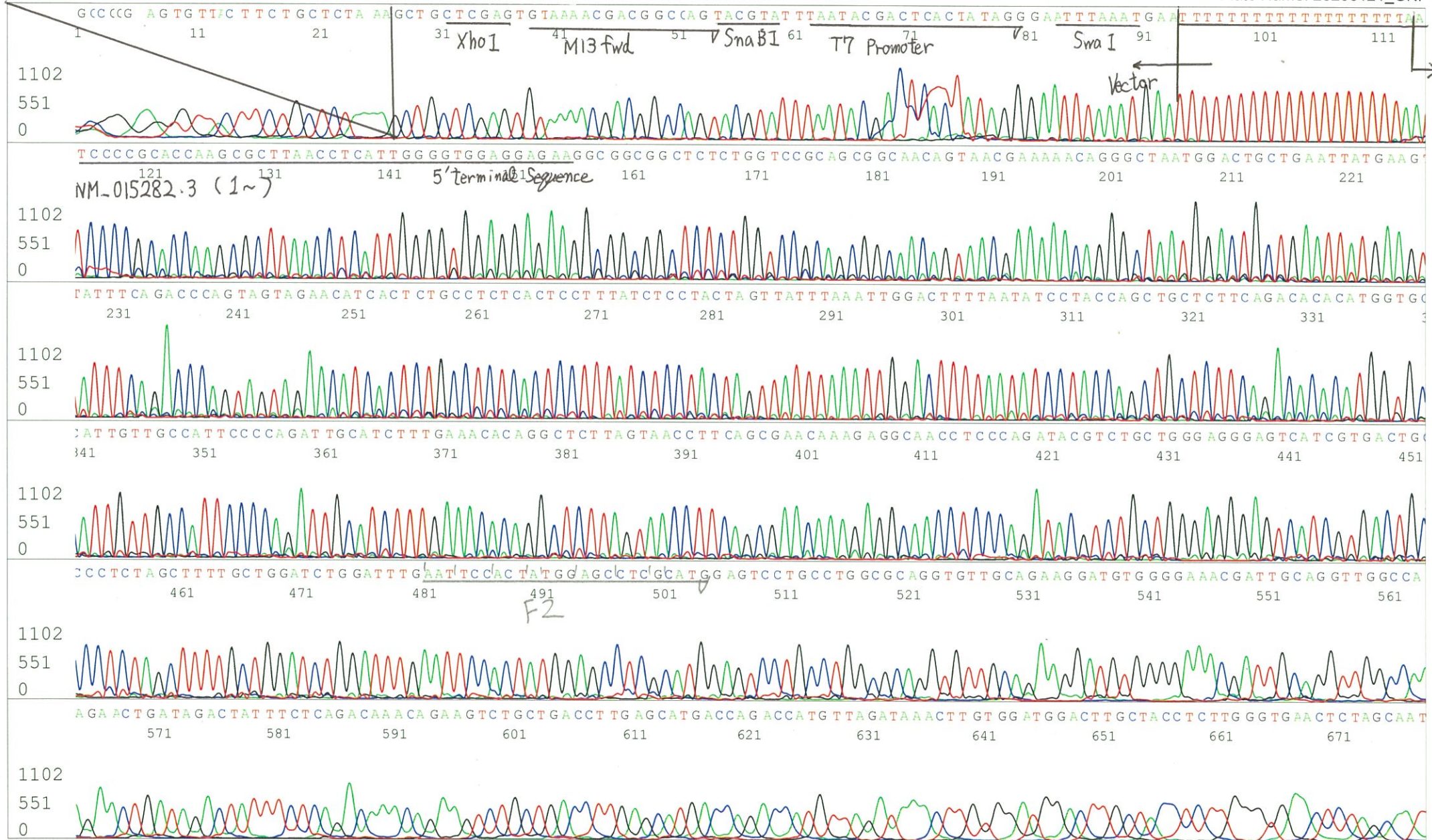
~~Conc. : ng/μl, Volume : μl~~

APPROVED BY :



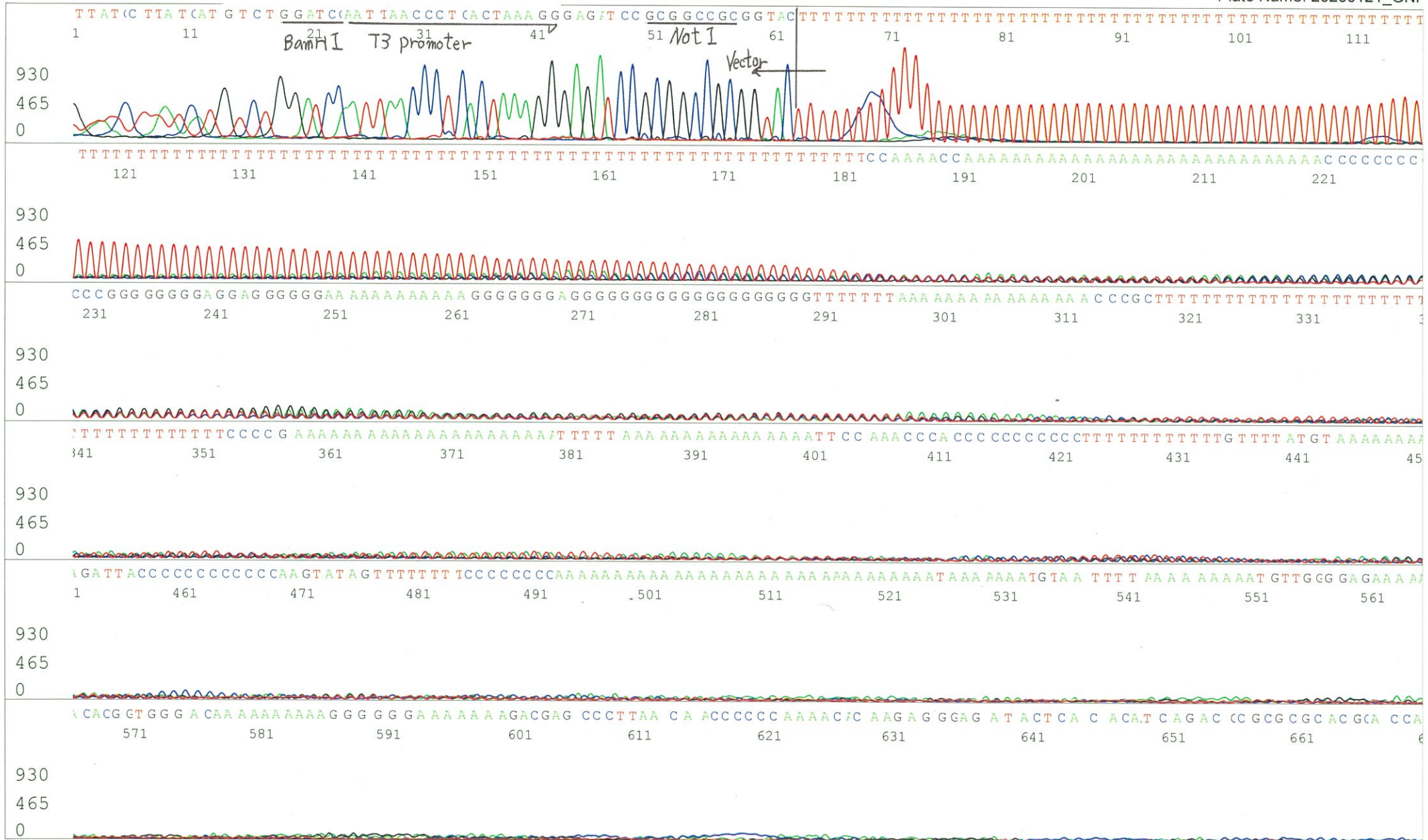
S/N G:175 A:210 T:168 C:214  
KB.bcp  
KB 1.4.1.8 Cap:1

Primer A : pGCAP-F  
5' CTCAGTGGATGTTGCCTTTAC 3'



S/N G:34 A:39 T:58 C:28  
KB.bcp  
KB 1.4.1.8 Cap:4

Primer B : pGCAP-R  
5' GCATTCTAGTTGTGGTTTGTCC 3'



S/N G:26 A:30 T:23 C:22

6607\_ARiS013J16\_B0Af\_GNPmixturre

Jan 21, 2020 01:41PM, JST

KB.bcp

KB\_3500\_POP7\_BDTv3.mob

Jan 21, 2020 01:56PM, JST

KB 1.4.1.8 Cap:7

Primer C : Poly(A) region primer #0

Pts 1683 to 8656 Pk1 Loc:1651

Spacing:10.72 Pts/Panel1350

5' TTTTTTTTTTTTTTTTTTTTTTVNN 3'

Version 6.0 HiSQV Bases: 643

Plate Name: 20200121\_GNP

