

RIKEN Clone ID : ARiS008N19

Vector : pGCAP10

Gene	PHKG2	
RefSeq_mRNA	NM_000294.2	5503 bp
	<i>CDS</i>	1221 bp
5' position		127

● Plasmid DNA purification

Date : 151201

Culture : LB (100 ug/ml Ampicillin) 5 ml -> at 37 deg C O/N

Date : 151202

Purification : QIAGEN Miniprep kit -> dH₂O 100 ul

● Digestion by restriction enzyme/Concentration calibration

Date : 151202

DNA concentration (O.D.): 112 ng/ul

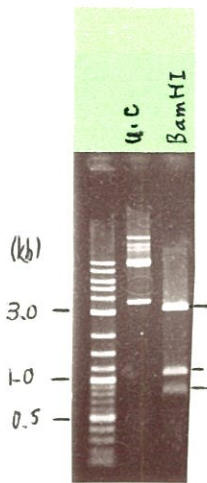
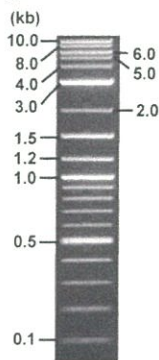
< Size of fragment expected from this clone >

DNA	1	ul
Enzyme (BamHI)	1	ul
Buffer H	1	ul
dH ₂ O	7	ul
Total	10	ul

BamHI 3.1kb (vector), 4.5, 1.1 kb (unsure)

Erectrophoresis : 1% agarose gel, 1x TAE Buffer

Marker : 2-Log DNA Ladder (NEB#N3200L)



● Confirmation of the insertion sequence

● Adjust plasmid DNA solution to 25 ng/ul

Date : 151203

Date : 151208

Primer A	pGCAP-F
Primer B	pGCAP-R
Primer C	Poly(A) region
List of Sequencing Primers	http://dna.brc.riken.jp/en/NRCDhum2en.html

DNA (<u>112</u> ng/ul)	<u>83.0</u> ul
10x TE	<u>37.2</u> ul
dH ₂ O	<u>251.6</u> ul
Total	<u>371.8</u> ul

● Shipping

Conc. : 25 ng/ul, Volume : 40 ul

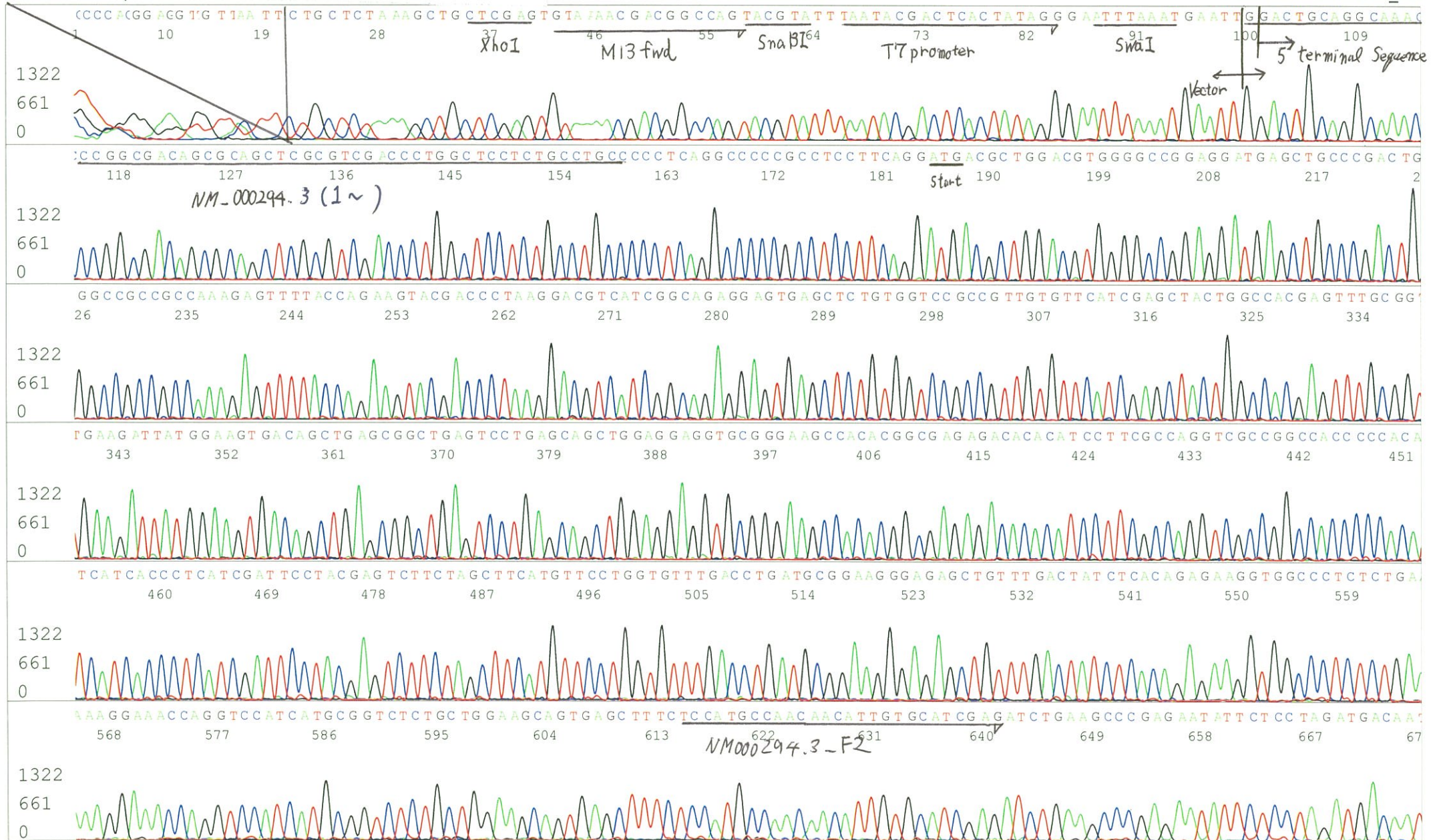
Conc. : ng/ul, Volume : ul

APPROVED BY :

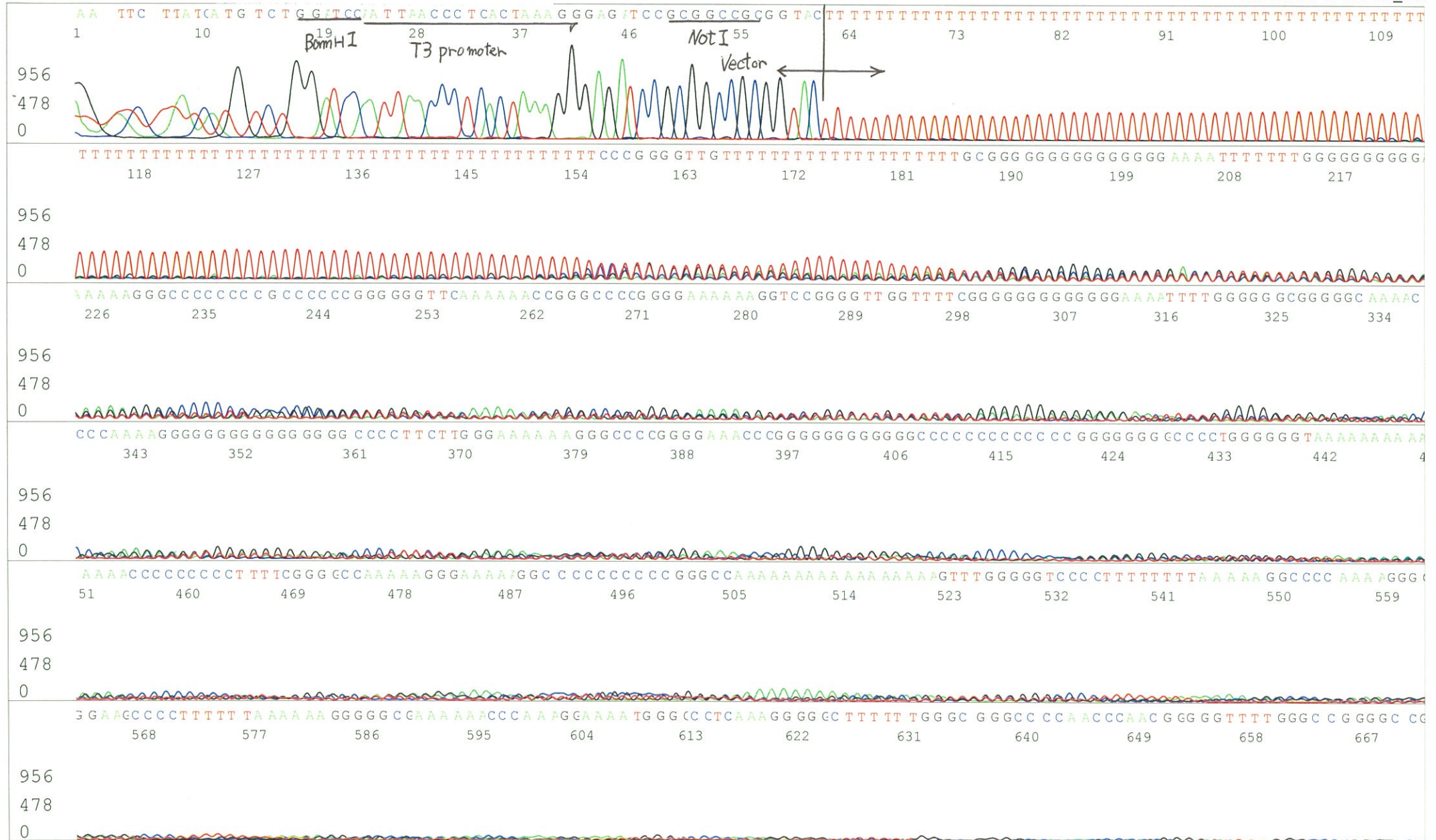


S/N G:46 A:41 T:33 C:37
KB.bcp
KB 1.4.1.8 Cap:2

Primer A : pGCAP-F
5' CTCAGTGGATGTTGCCTTTAC 3'



S/N G:160 A:134 T:192 C:12: Primer B : pGCAP-R
KB.bcp
KB 1.4.1.8 Cap:5 5' GCATTCTAGTTGTGGTTTGTCC 3'



S/N G:425 A:300 T:250 C:321
KB.bcp
KB 1.4.1.8 Cap:8

Primer C : Poly(A) region primer #0
5' TTTTTTTTTTTTTTTTTTTTTNNN 3'

