

F4

RIKEN Clone ID : ARi60B01

Vector : pGCAP10

Gene	FBXO30	
RefSeq_mRNA	NM_032145.5	9051 bp

● Plasmid DNA purification

Date : 2020.03.30

Culture : LB (100 ug/ml Ampicillin) 5 ml -> at 37 deg C O/N

Date : 2020.04.01

Purification : QIAGEN Miniprep kit -> dH₂O 100 ul

● Digestion by restriction enzyme/Concentration calibration

Date : 2020.04.01

DNA concentration (O.D.): 351 ng/ul

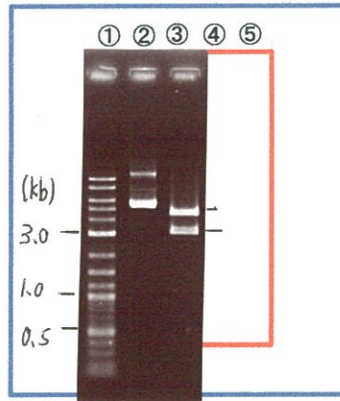
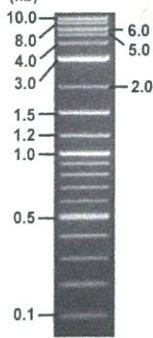
< Size of fragment expected from this clone >

DNA	0.3 ul
Enzyme (BamHI)	1 ul
Buffer H	1 ul
dH ₂ O	7.7 ul
Total	10 ul

BamHI 3.1kb (vector), 9.2 kb (unsure)

Electrophoresis : 1% agarose gel, 1x TAE Buffer

Marker : 2-Log DNA Ladder (NEB#N3200L)



①:Marker
②:uncut
③:BamHI

● Confirmation of the insertion sequence

Date : 2021.03.10

Primer A	pGCAP-F
Primer B	pGCAP-R
Primer C	Poly(A) region
List of Sequencing Primers	http://dna.brc.riken.jp/en/NRCDhum2e.html

● Adjust plasmid DNA solution to 25 ng/ul

Date : 2021.03.30

DNA (351 ng/ul)	74.0 ul
10x TE	103.8 ul
dH ₂ O	861.1 ul
Total	1038.9 ul

● Shipping



Conc. : 25 ng/μl, Volume : 40 μl

~~Conc. : 25 ng/μl, Volume : 40 μl~~

APPROVED BY :



S/N G:122 A:135 T:80 C:119

Primer A : pGCAP-F

7675_Ari60B01_B0Cu_pGCAP_F

Apr 02,2020 09:38AM, JST

KB.bcp

KB_3500_POP7_BDTv3.mob

Apr 02,2020 09:52AM, JST

KB 1.4.1.8 Cap:7

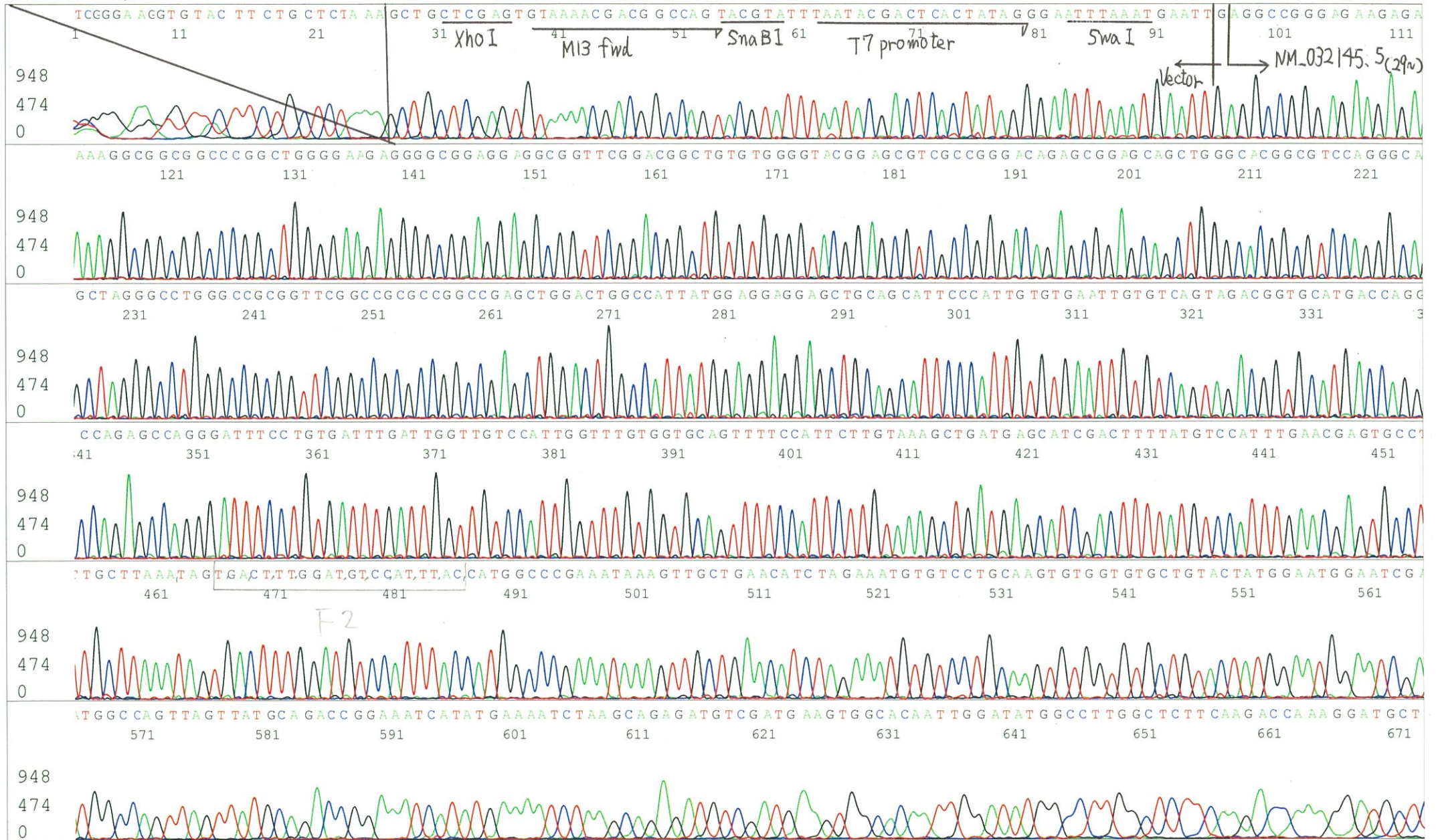
5' CTCAGTGGATGTTGCCTTTAC 3'

Pts 1715 to 8704 Pk1 Loc:1683

Spacing:10.46 Pts/Panel1350

Version 6.0 HiSQV Bases: 686

Plate Name: 20200402_KatoClone



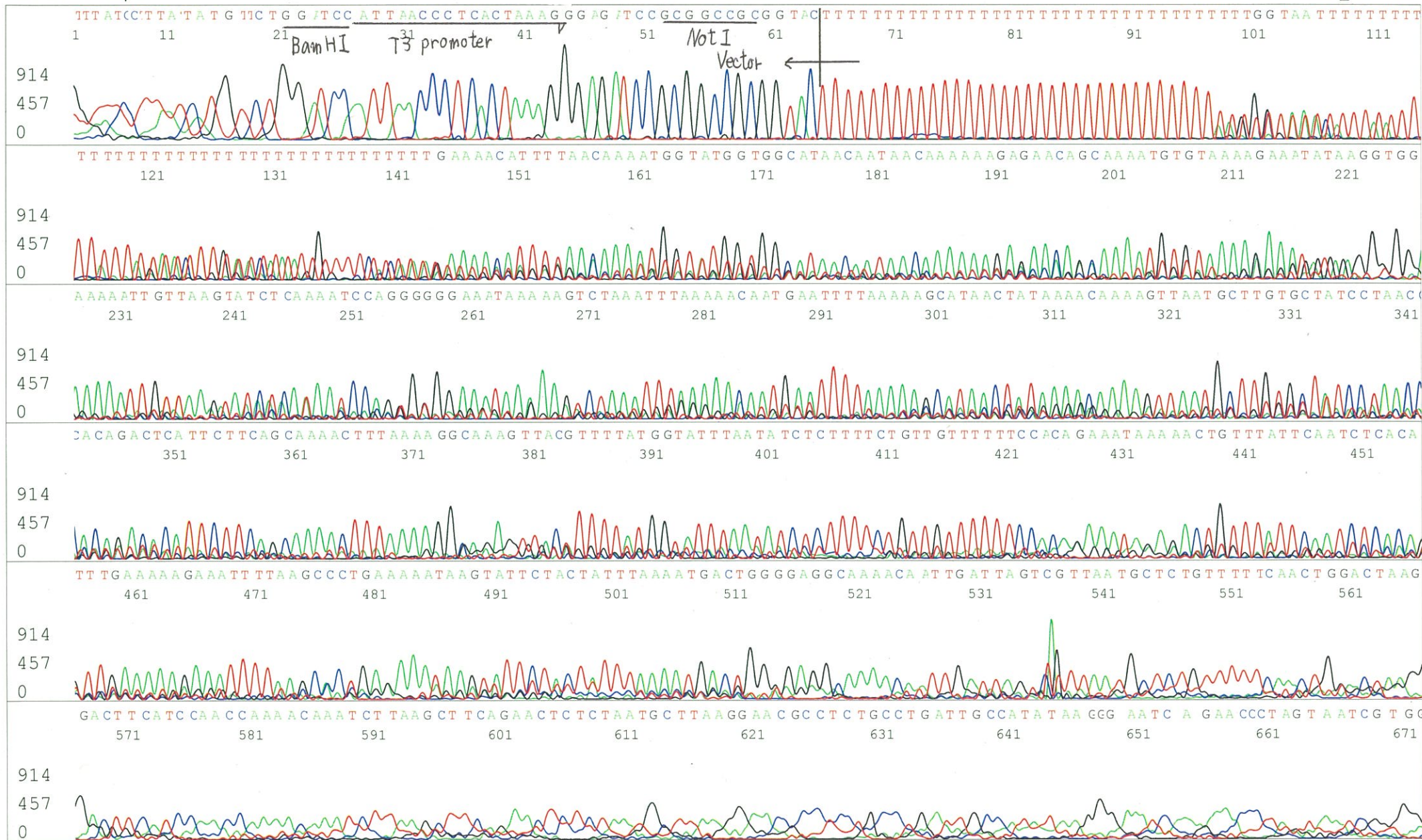
S/N G:23 A:41 T:26 C:23

Primer B : pGCAP-R

KB.bcp

5' GCATTCTAGTTGTGGTTTGTCC 3'

KB 1.4.1.8 Cap:8



S/N G:18 A:34 T:21 C:21
KB.bcp
KB 1.4.1.8 Cap:3

Primer C : Poly(A) region primer #0
5' TTTTTTTTTTTTTTTTTTTTTT VNN 3'

