

RIKEN Clone ID : ARi59A08

Vector : pGCAP10

Gene	FMR1	
RefSeq_mRNA	NM_002024.6	4441 bp

● Plasmid DNA purification

Date : 2020.03.30

Culture : LB (100 ug/ml Ampicillin) 5 ml -> at 37 deg C O/N

Date : 2020.04.01

Purification : QIAGEN Miniprep kit -> dH₂O 100 ul

● Digestion by restriction enzyme/Concentration calibration

Date : 2020.04.01

DNA concentration (O.D.): 171 ng/ul

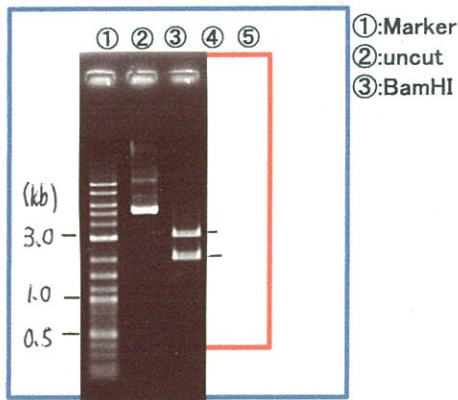
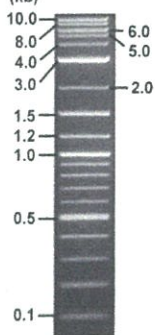
< Size of fragment expected from this clone >

DNA	0.6 ul
Enzyme (BamHI)	1 ul
Buffer H	1 ul
dH ₂ O	7.4 ul
Total	10 ul

BamHI 3.1kb (vector), 2.5, 2.1 kb (unsure)

Erectrophoresis : 1% agarose gel, 1x TAE Buffer

Marker : 2-Log DNA Ladder (NEB#N3200L)



● Confirmation of the insertion sequence

Date : 2021.03.10

● Adjust plasmid DNA solution to 25 ng/ul

Date : 2021.03.30

Primer A	pGCAP-F
Primer B	pGCAP-R
Primer C	Poly(A) region
List of Sequencing Primers	http://dna.brc.riken.jp/en/NRCDhum2en.html

DNA (171 ng/ul)	64.0 ul
10x TE	43.7 ul
dH ₂ O	330.0 ul
Total	437.7 ul

● Shipping



Conc. : 25 ng/μl, Volume : 40 μl



~~Conc. : 25 ng/μl, Volume : 40 μl~~



APPROVED BY :

S/N G:192 A:155 T:97 C:168 Primer A : pGCAP-F

7675_ArI59A08: _B0Cu_pGCAP_F

Apr 02,2020 09:38AM, JST

KB.bcp

KB_3500_POP7_BDTv3.mob

Apr 02,2020 09:52AM, JST

KB 1.4.1.8 Cap:4

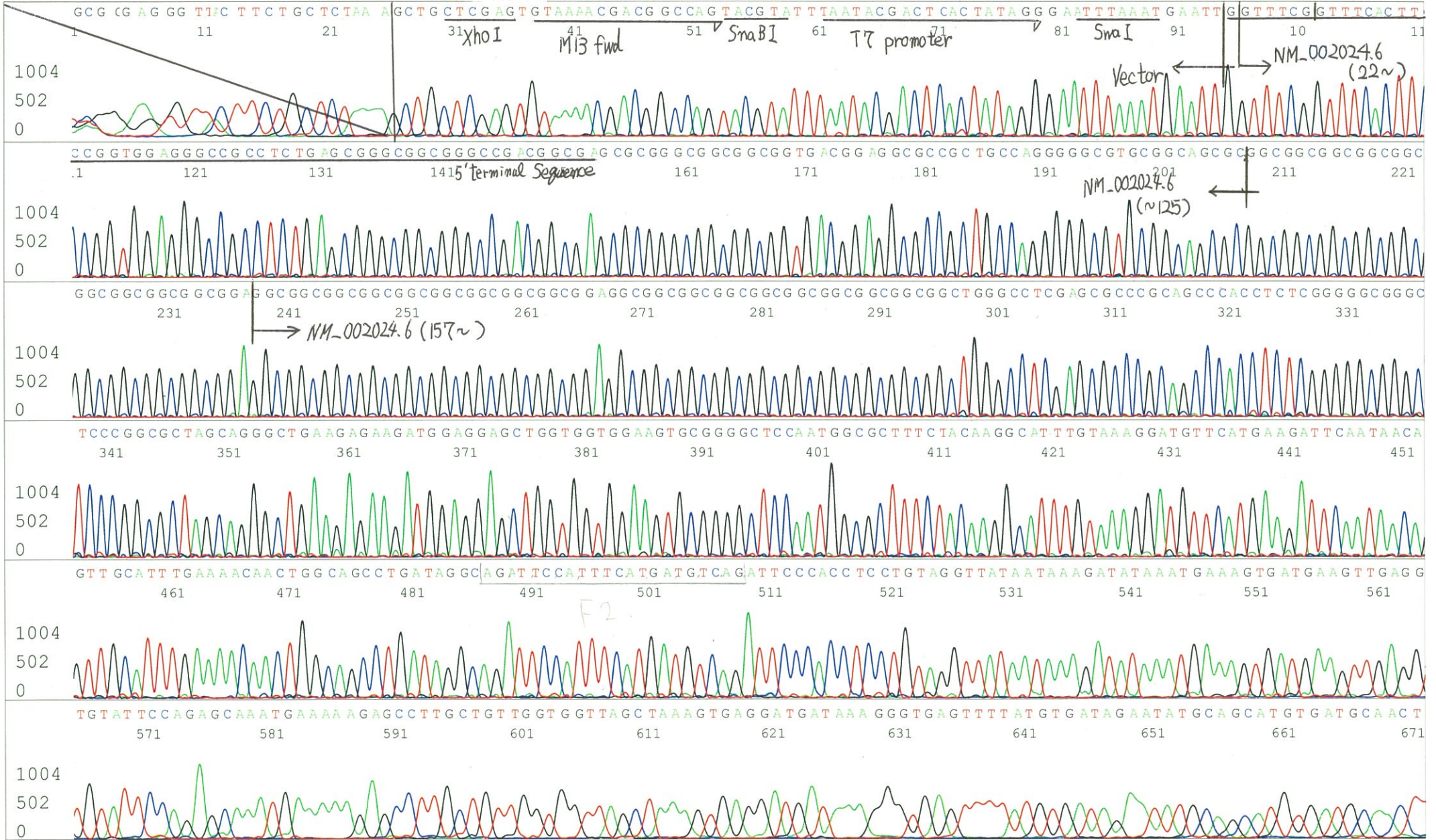
5' CTCAGTGGATGTTGCCTTTAC 3'

Pts 1723 to 8674 Pk1 Loc:1691

Spacing:10.35 Pts/Panel1350

Version 6.0 HiSQV Bases: 669

Plate Name: 20200402_KatoClone



S/N G:25 A:48 T:41 C:34
KB.bcp
KB 1.4.1.8 Cap:21

Primer C : Poly(A) region primer #0
5' TTTTTTTTTTTTTTTTTTTTTTVNN 3'

