

**RIKEN Clone ID : ARI58G10**

Vector : pGCAP10

Gene	RALB	
RefSeq_mRNA	NM_002881.3	2247 bp

● Plasmid DNA purification

Date : 190326

Culture : LB (100 ug/ml Ampicillin) 5 ml -> at 37 deg C O/N

Date : 190327

Purification : QIAGEN Miniprep kit -> dH<sub>2</sub>O 100 ul

● Digestion by restriction enzyme/Concentration calibration

Date : 190327

DNA concentration (O.D.): 343 ng/ul

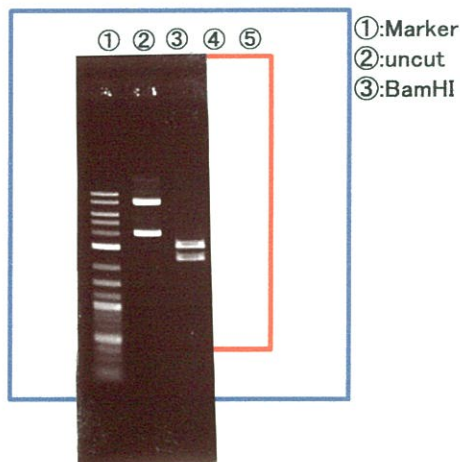
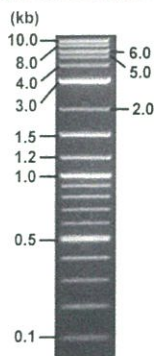
< Size of fragment expected from this clone >

DNA	0.3 ul
Enzyme (BamHI)	1 ul
Buffer H	1 ul
dH <sub>2</sub> O	7.7 ul
<b>Total</b>	<b>10 ul</b>

BamHI 3.1kb (vector), 2.4 kb (unsure)

Erectrophoresis : 1% agarose gel, 1x TAE Buffer

Marker : 2-Log DNA Ladder (NEB#N3200L)



①:Marker  
②:uncut  
③:BamHI

● Confirmation of the insertion sequence

Date : 190329

Primer A	pGCAP-F
Primer B	pGCAP-R
Primer C	Poly(A) region
List of Sequencing Primers	<a href="http://dna.brc.riken.jp/en/NRCDhum2en.html">http://dna.brc.riken.jp/en/NRCDhum2en.html</a>

● Adjust plasmid DNA solution to 25 ng/ul

Date : 21.04.01

DNA (343 ng/ul)	80.0 ul
10x TE	1097.7 ul
dH <sub>2</sub> O	907.9 ul
<b>Total</b>	<b>1097.6 ul</b>

● Shipping



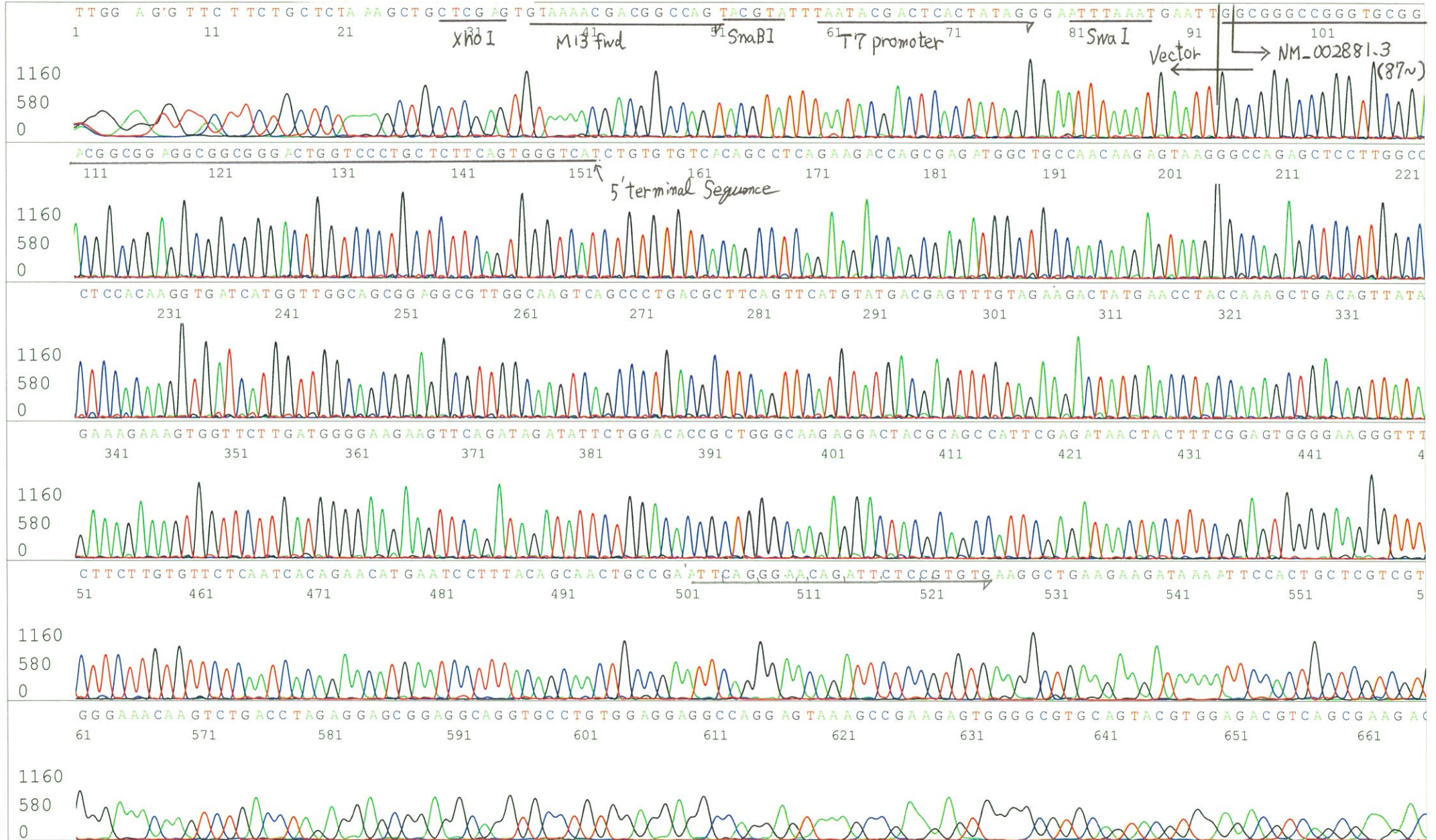
Conc. : 25 ng/μl, Volume : 40 μl

~~Conc. : 25 ng/μl, Volume : 40 μl~~



APPROVED BY :

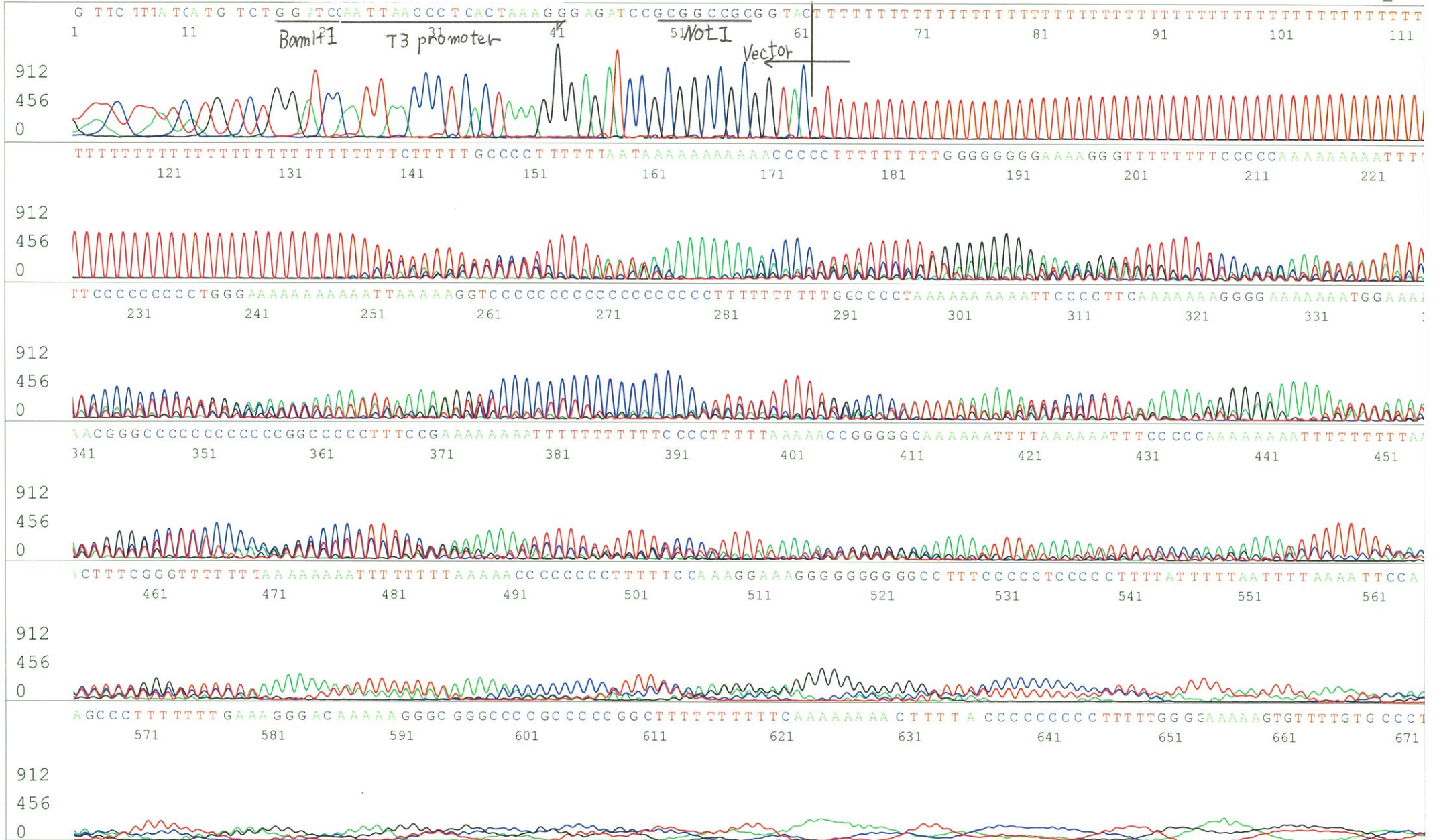
S/N G:270 A:301 T:205 C:3 Primer A : pGCAP-F  
KB.bcp  
KB 1.4.1.8 Cap:14 5' CTCAGTGGATGTTGCCTTTAC 3'





S/N G:91 A:133 T:164 C:132  
KB.bcp  
KB 1.4.1.8 Cap:17

Primer B : pGCAP-R  
5' GCATTCTAGTTGTGGTTTGTCC 3'





S/N G:60 A:81 T:67 C:75 Primer C : Poly(A) region primer #0  
KB.bcp  
KB 1.4.1.8 Cap:20 5' TTTTTTTTTTTTTTTTTTTTTTNNN 3'

