

RIKEN Clone ID : ARi42D11

Vector : pGCAP10

Gene	OSBP	
RefSeq_mRNA	NM_002556.2	5083 bp
	CDS	2424 bp
		481..2904
	5' position	384

● Plasmid DNA purification

Date : 150115

Culture : LB (100 ug/ml Ampicillin) 5 ml -> at 37 deg C O/N

Date : 150116

Purification : QIAGEN Miniprep kit -> dH₂O 100 ul

● Digestion by restriction enzyme/Concentration calibration

Date : 150116

DNA concentration (O.D.): 128 ng/ul

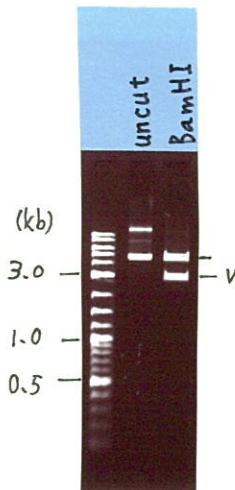
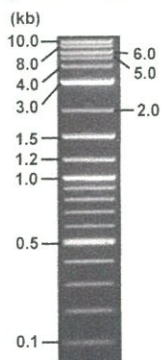
<Size of fragment expected from ARi42D11 >

DNA	0.4	ul
Enzyme (BamHI)	1	ul
Buffer H	1	ul
dH ₂ O	7.6	ul
Total	10	ul

BamHI 3183(vector), 4901 bp (unsure)

Electrophoresis : 1% agarose gel, 1x TAE Buffer

Marker : 2-Log DNA Ladder (NEB#N3200L)



● Confirmation of the insertion sequence

Date : 150120

Primer A	pGCAP-F
Primer B	pGCAP-R
Primer C	Poly(A) region
List of Sequencing Primers	http://dna.brc.riken.jp/en/NRCDhum2en.html

● Adjust plasmid DNA solution to 25 ng/ul

Date : 150121

DNA (<u>128</u> ng/ul)	85.0	ul
10x TE	43.5	ul
dH ₂ O	306.7	ul
Total	435.2	ul

● Shipping

Conc. : 25 ng/μl, Volume : 40 μl

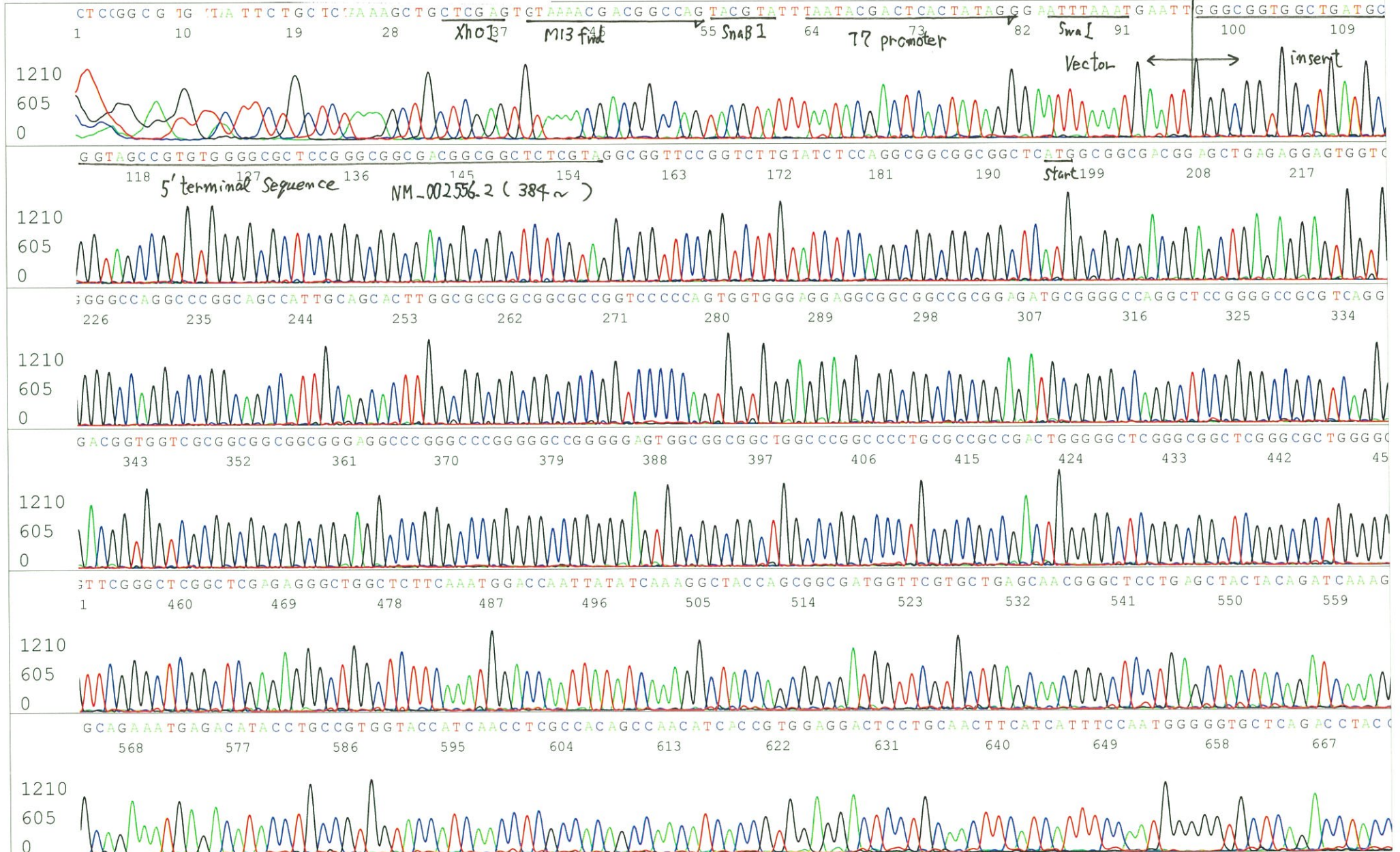
~~Conc. : ng/μl, Volume : μl~~

APPROVED BY :

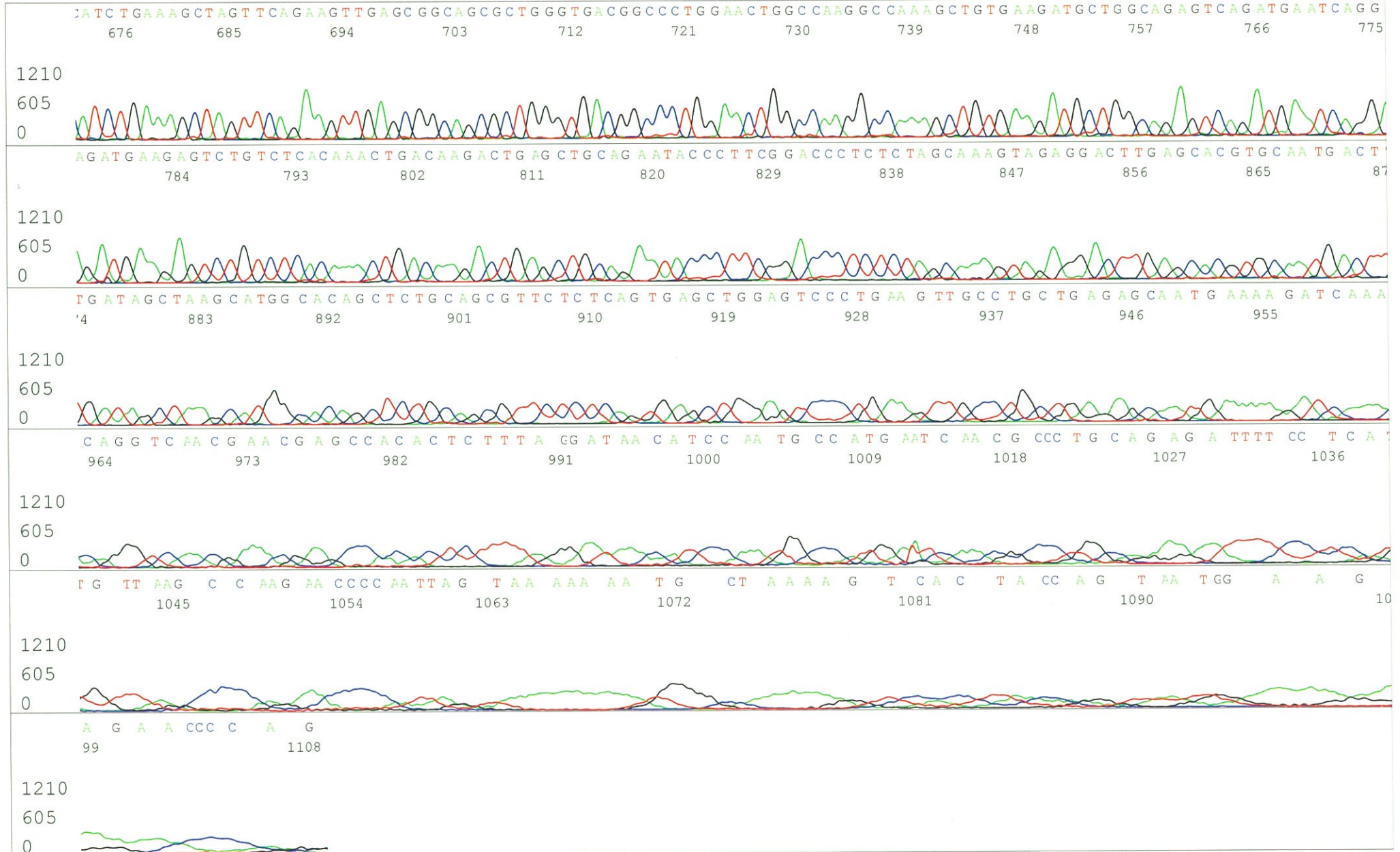


S/N G:88 A:81 T:67 C:104
KB.bcp
KB 1.4.1.8 Cap:16

Primer A : pGCAP-F
5' CTCAGTGGATGTTGCCTTTAC 3'

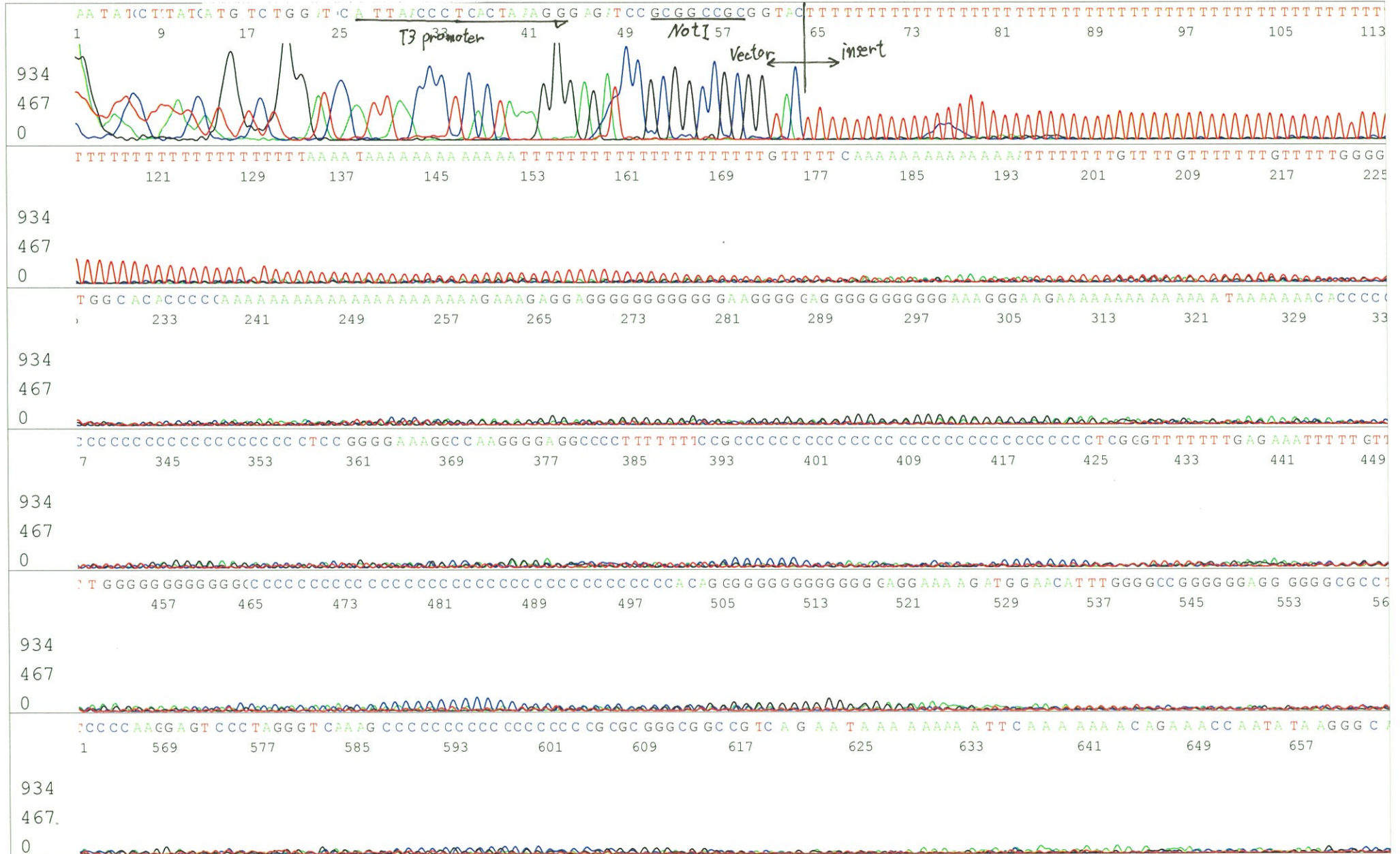


S/N G:88 A:81 T:67 C:104
KB.bcp
KB 1.4.1.8 Cap:16

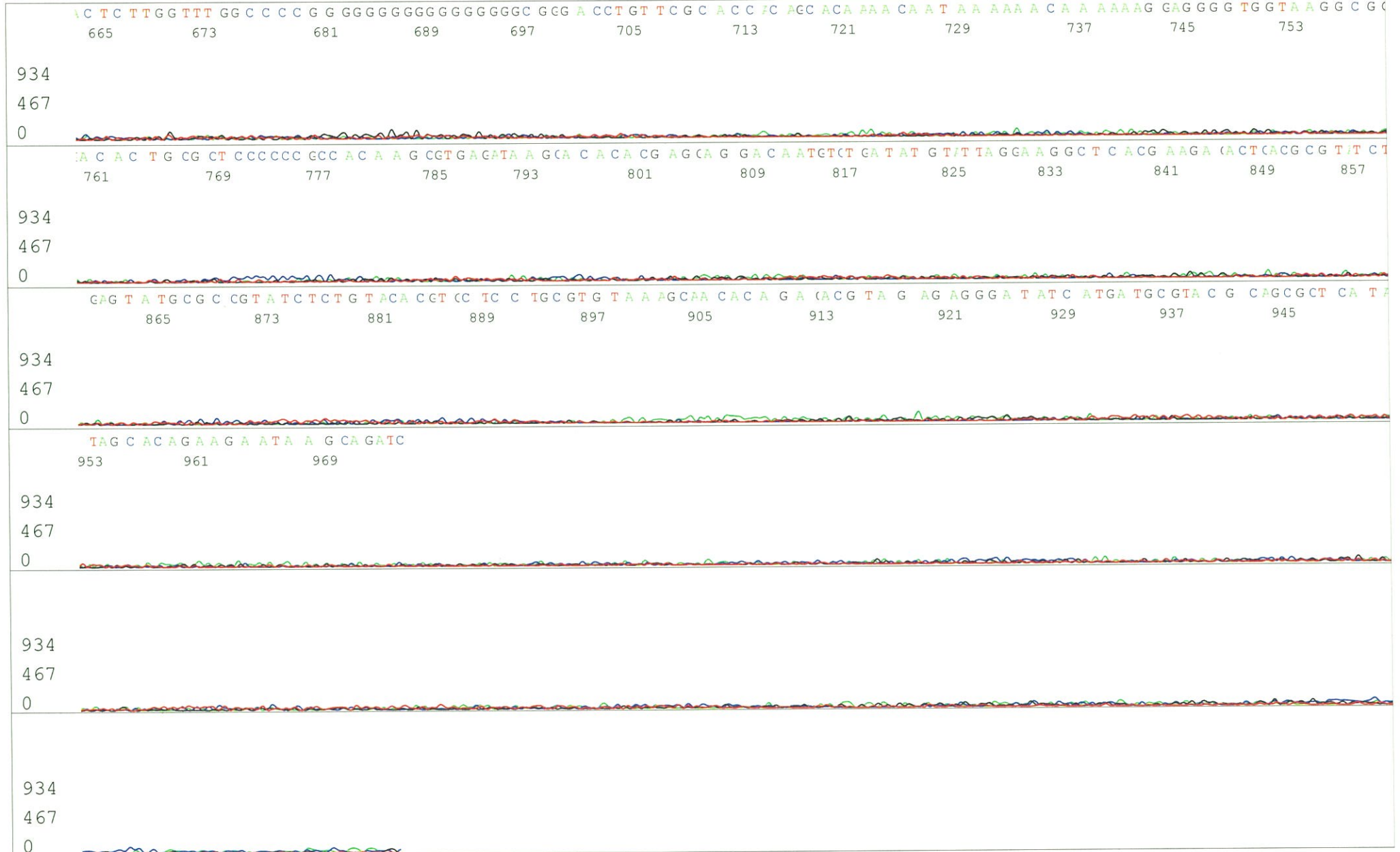


S/N G:9 A:13 T:13 C:9
KB.bcp
KB 1.4.1.8 Cap:19

Primer B : pGCAP-R
5' GCATTCTAGTTGTGGTTTGTCC 3'



S/N G:9 A:13 T:13 C:9
KB.bcp
KB 1.4.1.8 Cap:19

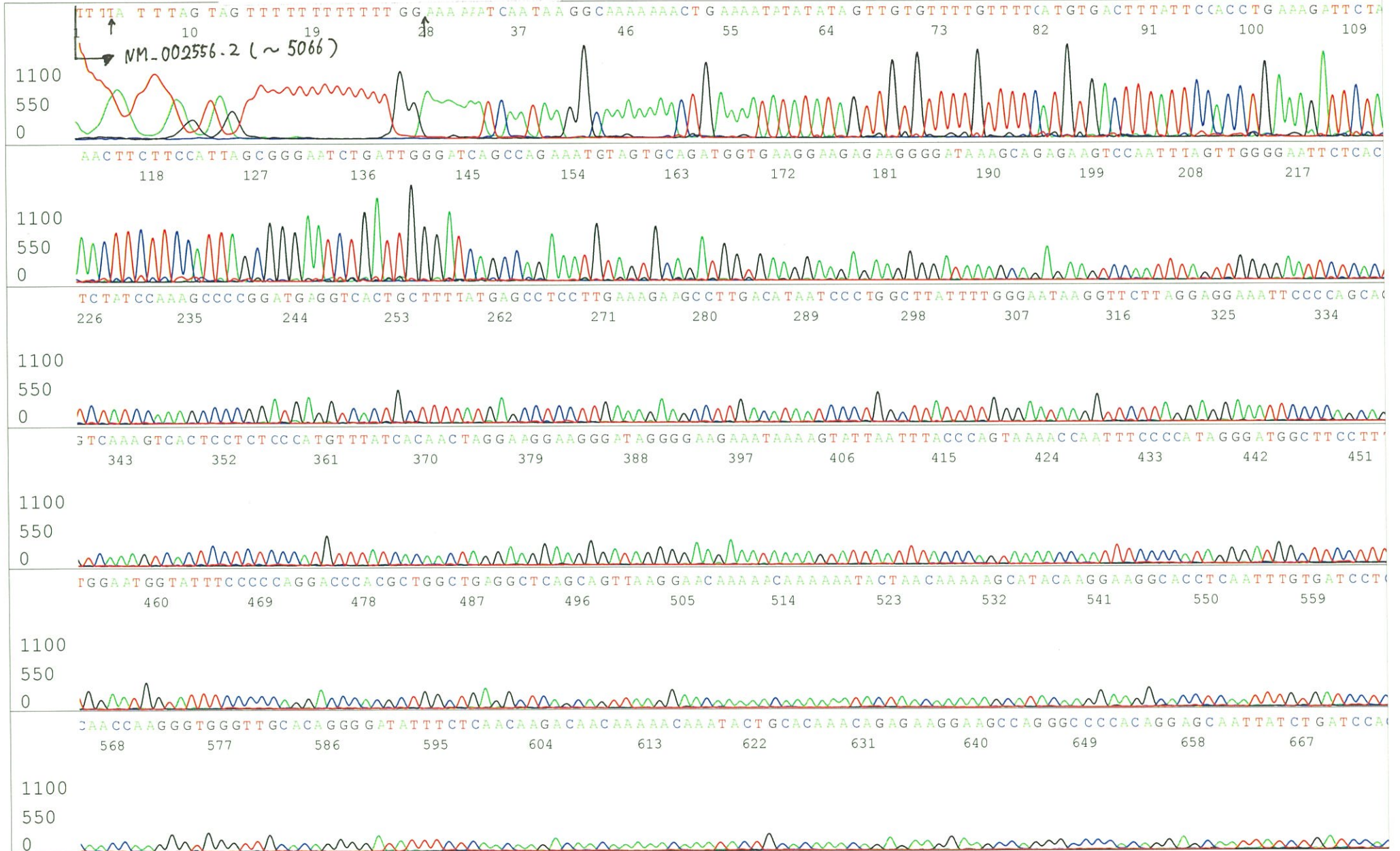


S/N G:102 A:118 T:97 C:57
KB.bcp
KB 1.4.1.8 Cap:22

Primer C : Poly(A) region primer #0
5' TTTTTTTTTTTTTTTTTTTTTNNN 3'

7675_ARi42D11_A5Ae_GNPmixture
KB_3500_POP7_BDTv3.mob
Pts 1450 to 12486 Pk1 Loc:1427
Version 5.4 HiSQV Bases: 966

Jan 20,2015 05:26PM, JST
Jan 20,2015 06:00PM, JST
Spacing:11.07 Pts/Panel1350
Plate Name: 20150120_mix



S/N G:102 A:118 T:97 C:57
KB.bcp
KB 1.4.1.8 Cap:22

