

RIKEN Clone ID : ARi38H12

Vector : pGCAP10

Gene	COL4A1	
RefSeq_mRNA	NM_001845.6	6540 bp

● Plasmid DNA purification

Date : 190205

Culture : LB (100 ug/ml Ampicillin) 5 ml → at 37 deg C O/N

Date : 190206

Purification : QIAGEN Miniprep kit → dH₂O 100 ul

● Digestion by restriction enzyme/Concentration calibration

Date : 190206

DNA concentration (O.D.): 292 ng/ul

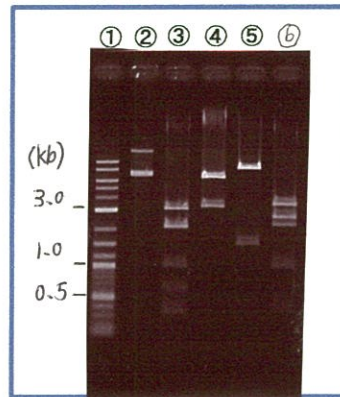
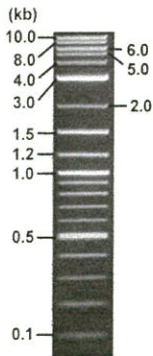
< Size of fragment expected from this clone >

DNA	<u>0.3</u> ul
Enzyme (BamHI)	1 ul
Buffer H	1 ul
dH ₂ O	<u>7.7</u> ul
Total	10 ul

BamHI 3.1kb (vector), 2.1, 2.1, 1.0, 0.6, 0.3, 0.3, 0.1 kb (unsure)

Electrophoresis : 1% agarose gel, 1x TAE Buffer

Marker : 2-Log DNA Ladder (NEB#N3200L)



①:Marker
②:uncut
③:BamHI
④: SwaI + Not I
⑤: SwaI + EcoRV
⑥: NheI + EcoRI

● Confirmation of the insertion sequence

Date : 190207

Primer A	pGCAP-F
Primer B	pGCAP-R
Primer C	Poly(A) region
List of Sequencing Primers	http://dna.brc.riken.jp/en/NRCDhum2en.html

● Adjust plasmid DNA solution to 25 ng/ul

Date : 190212

DNA (<u>292</u> ng/ul)	<u>86.0</u> ul
10x TE	<u>100.4</u> ul
dH ₂ O	<u>818.0</u> ul
Total	<u>1004.4</u> ul

● Shipping



Conc. : 25 ng/μl, Volume : 40 μl



Conc. : ng/μl, Volume : μl



APPROVED BY :

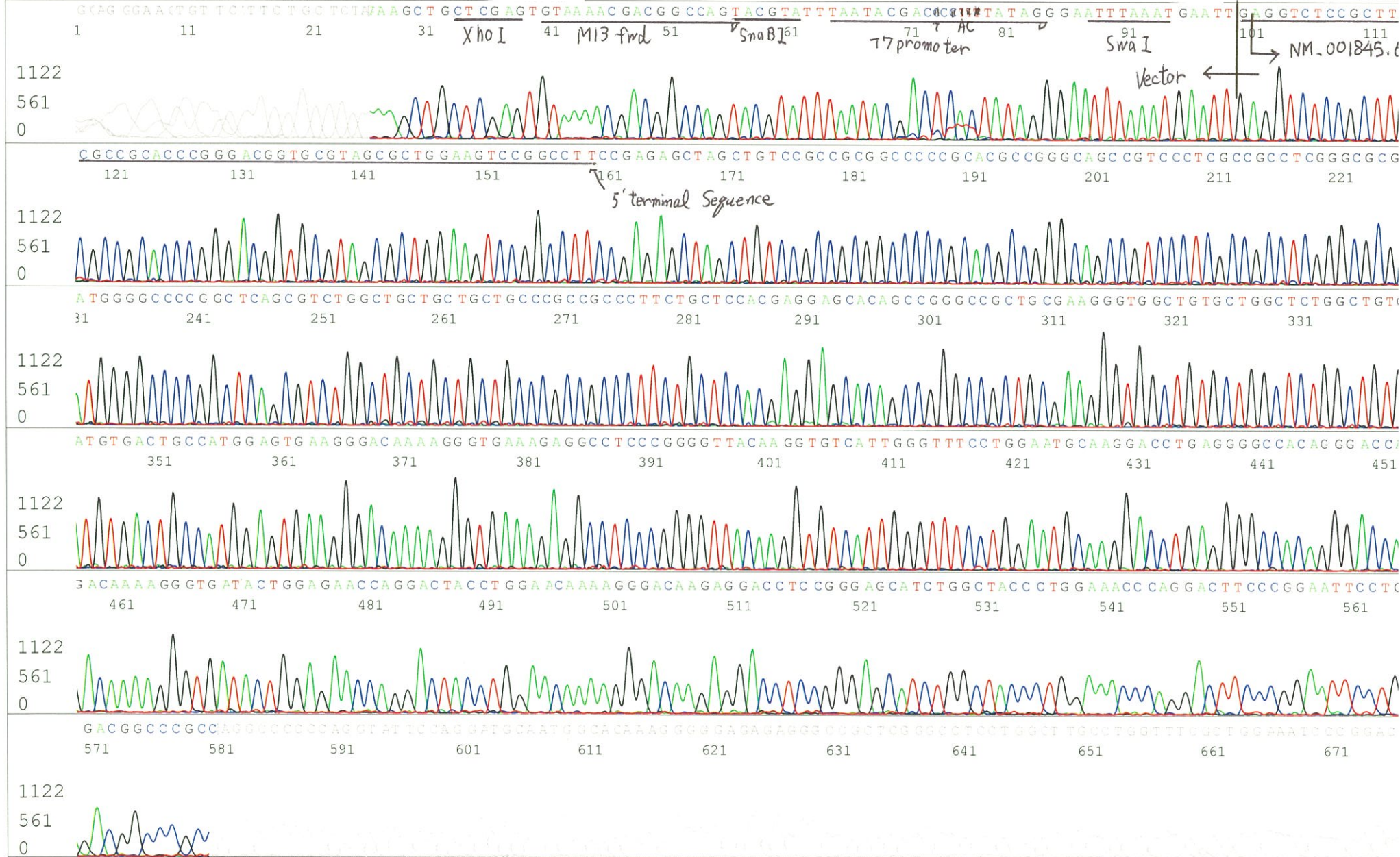
S/N G:40 A:31 T:25 C:51
KB.bcp
KB 1.4.1.8 Cap:8

Primer A : pGCAP-F
5' CTCAGTGGATGTTGCCTTTAC 3'

ARI38H12_A9B4_III_pGCAP_F_H01_08_ABI08
ARI38H12_A9B4_III_pGCAP_F
KB_3500_POP7_BDTv3.mob
Pts 1780 to 8704 PK1 Loc:1748
Version 6.0 HiSQV Bases: 651

Inst Model/Name 3500/3500 In
Feb 07,2019 09:41
Feb 07,2019 09:57
Spacing:11.6 Pts/Pa
Plate Name: 201902

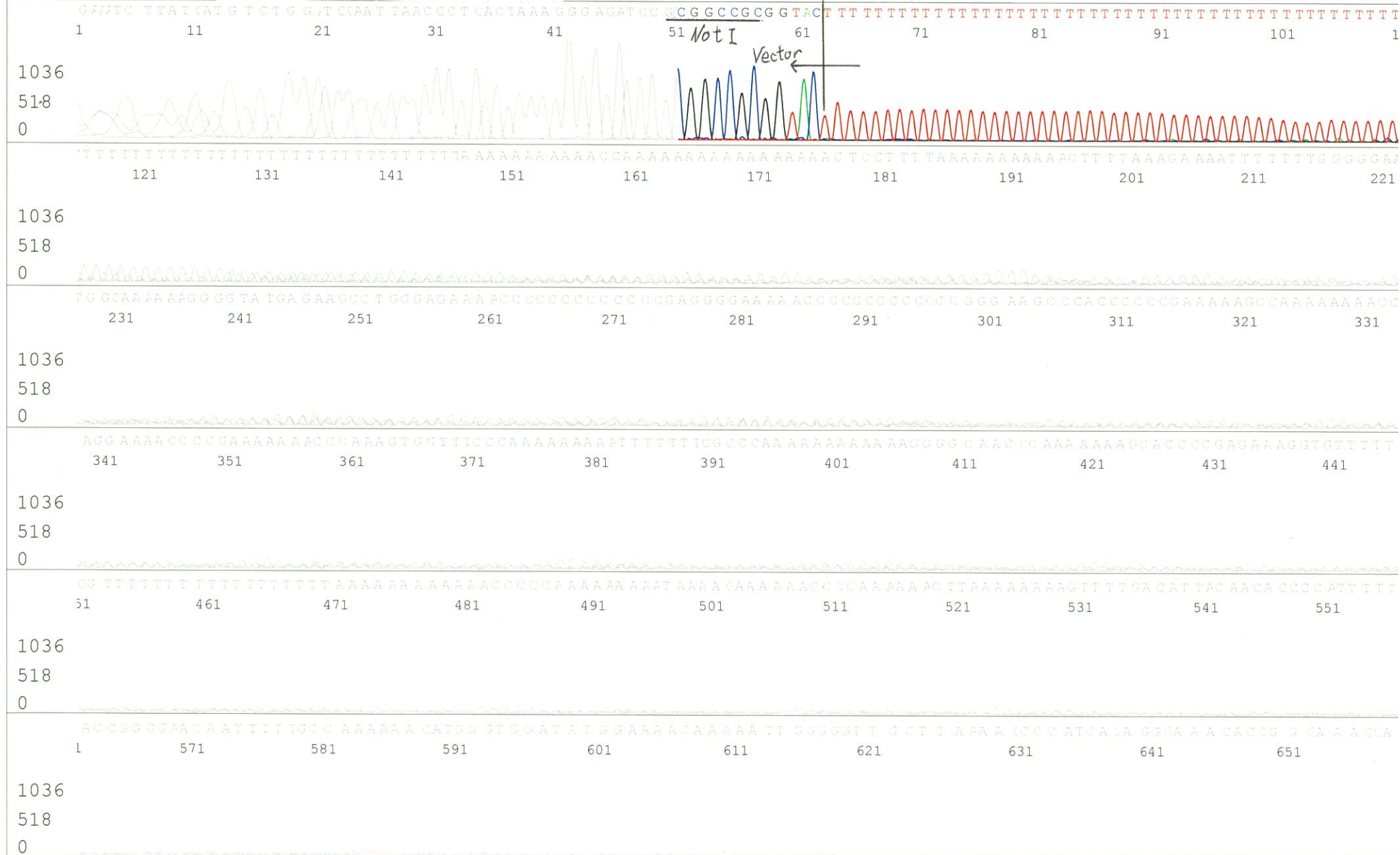
Gray line indicates quality value (QV) < 40.



S/N G:20 A:24 T:34 C:24
KB.bcp
KB 1.4.1.8 Cap:2

Primer B : pGCAP-R
5' GCATTCTAGTTGTGGTTTGTCC 3'

Gray line indicates quality value
(QV) < 40.



S/N G:11 A:11 T:12 C:11
KB.bcp
KB 1.4.1.8 Cap:1

Primer C : Poly(A) region primer #0
5' TTTTTTTTTTTTTTTTTTTNNN 3'

ARI38H12_A9B4_III_GNP Mixture_A02_01_ABI08
ARI38H12_A9B4_III_GNP Mixture
KB_3500_POP7_BDTv3.mob
Pts 1756 to 8703 Pk1 Loc:1724
Version 6.0 HiSQV Bases: 642

Inst Model/Name 3500/3500 In
Feb 07,2019 10:21
Feb 07,2019 10:37
Spacing:11.47 Pts/Pa
Plate Name: 201902

Gray line indicates quality value (QV) < 40.

