

RIKEN Clone ID : ARi37C03

Vector : pGCAP10

Gene	CD44	
RefSeq_mRNA	NM_000610.3	5748 bp

● Plasmid DNA purification

Date : 171010

Culture : LB (100 ug/ml Ampicillin) 5 ml -> at 37 deg C O/N

Date : 171011

Purification : QIAGEN Miniprep kit -> dH₂O 100 ul

● Digestion by restriction enzyme/Concentration calibration

Date : 171011

DNA concentration (O.D.): 22 ng/ul

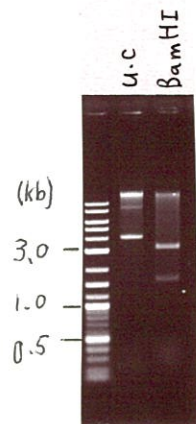
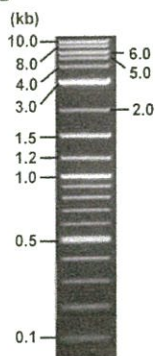
< Size of fragment expected from this clone >

DNA	<u>5</u> ul
Enzyme (BamHI)	1 ul
Buffer H	1 ul
dH ₂ O	<u>2</u> ul
Total	10 ul

BamHI 3.1kb (vector), 5.1, 0.3, 0.2 kb (unsure)

Electrophoresis : 1% agarose gel, 1x TAE Buffer

Marker : 2-Log DNA Ladder (NEB#N3200L)



● Confirmation of the insertion sequence

Date : 171018

Primer A	pGCAP-F
Primer B	pGCAP-R
Primer C	Poly(A) region
List of Sequencing Primers	http://dna.brc.riken.jp/en/NRCDhum2en.html

● Adjust plasmid DNA solution to 25 ng/ul

Date : _____

DNA (<u>22</u> ng/ul)	<u>58.0</u> ul
10x TE	ul
dH ₂ O	ul
Total	<u>58.0</u> ul

● Shipping

~~Conc. : 25 ng/ul, Volume : 40 ul~~

Conc. : 22 ng/ul, Volume : 46 ul

APPROVED BY :



S/N G:11 A:10 T:11 C:15

Primer A : pGCAP-F

7675_ARI37C03_A7J6_pGCAP_F

KB_3500_POP7_BDTv3.mob

Gray line indicates quality value

Oct 12,2017 04:35PM, JST

KB.bcp

Pts 1716 to 8619 Pk1 Loc:1684

Oct 12,2017 04:50PM, JST

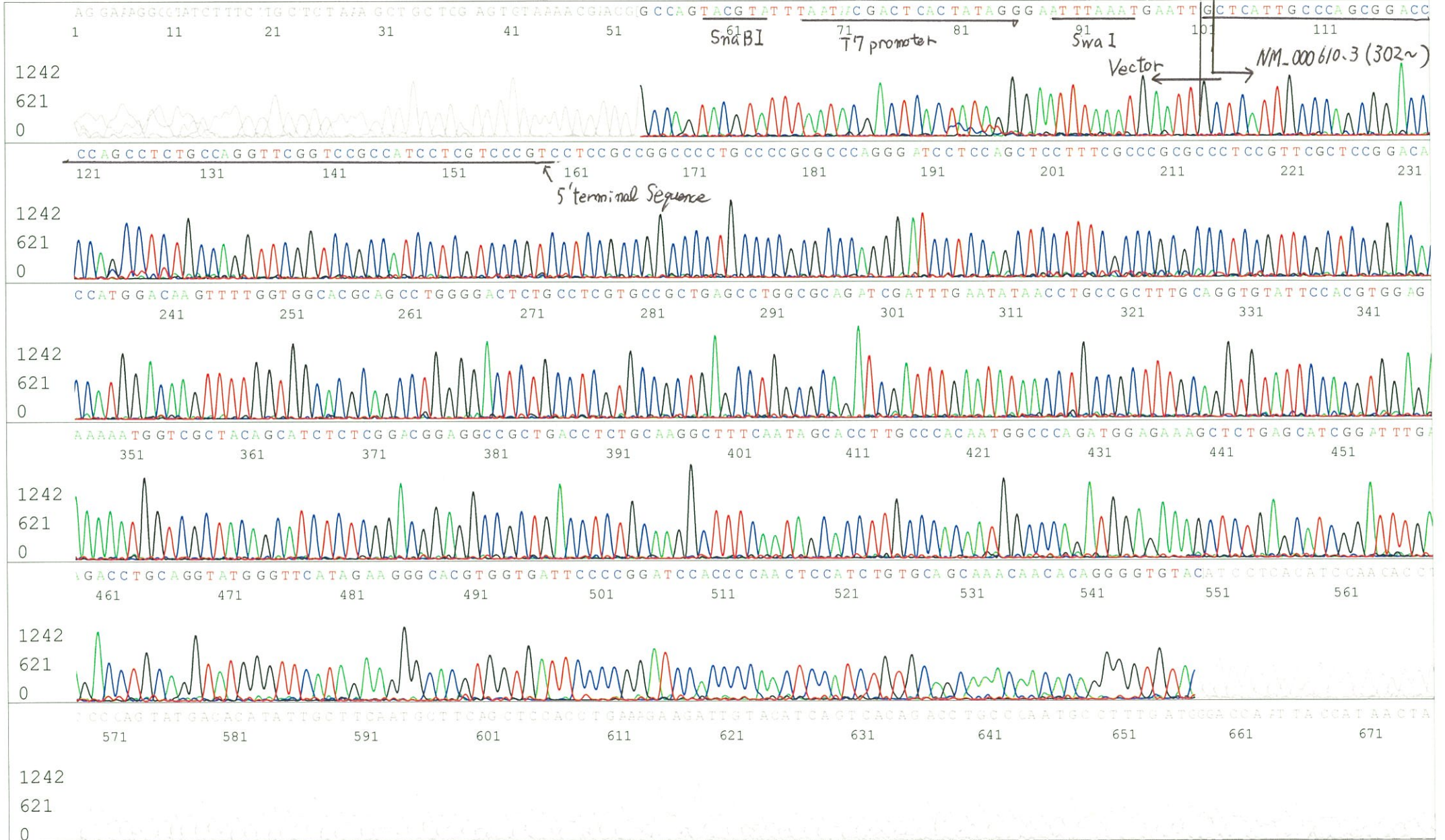
KB 1.4.1.8 Cap:1

5' CTCAGTGGATGTTGCCTTTAC 3'

Version 6.0 HiSQV Bases: 675 (QV) < 40.

Spacing:10.5 Pts/Panel1350

Plate Name: 20171012_GNP



S/N G:18 A:21 T:12 C:12
KB.bcp
KB 1.4.1.8 Cap:7

Primer C : Poly(A) region primer #0
5' TTTTTTTTTTTTTTTTTTTTTTNNN 3'

7675_Ari37C03_A7J6_GNPmixture
KB_3500_POP7_BDTv3.mob
Pts 1802 to 8706 Pk1 Loc:1770
Version 6.0 HiSQV Bases: 679

Oct 18,2017 10:09AM, JST
Oct 18,2017 10:23AM, JST
Spacing:10.53 Pts/Panel1350
Plate Name: 20171018_GNP

