

RIKEN Clone ID : ARi29B10

Vector : pGCAP10

Gene	CD44	
RefSeq_mRNA	NM_000610.3	5748 bp

● Plasmid DNA purification

Date : 171012

Culture : LB (100 ug/ml Ampicillin) 5 ml -> at 37 deg C O/N

Date : 171017

Purification : QIAGEN Miniprep kit -> dH₂O 100 ul

● Digestion by restriction enzyme/Concentration calibration

Date : 171017

DNA concentration (O.D.): 155 ng/ul

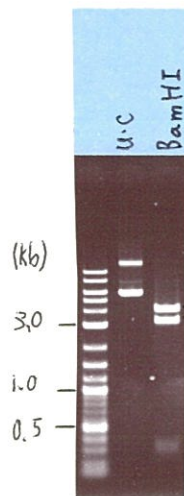
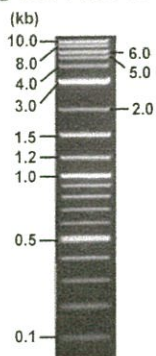
< Size of fragment expected from this clone >

DNA	0.6 ul
Enzyme (BamHI)	1 ul
Buffer H	1 ul
dH ₂ O	7.4 ul
Total	10 ul

BamHI 3.1kb (vector), 5.1, 0.3, 0.2 kb (unsure)

Electrophoresis : 1% agarose gel, 1x TAE Buffer

Marker : 2-Log DNA Ladder (NEB#N3200L)



● Confirmation of the insertion sequence

Date : 171018

Primer A	pGCAP-F
Primer B	pGCAP-R
Primer C	Poly(A) region
List of Sequencing Primers	http://dna.brc.riken.jp/en/NRCDhum2en.html

● Adjust plasmid DNA solution to 25 ng/ul

Date : _____

DNA (<u>155</u> ng/ul)	82.0 ul
10x TE	50.8 ul
dH ₂ O	375.6 ul
Total	508.4 ul

● Shipping



Conc. : 25 ng/ul, Volume : 40 ul

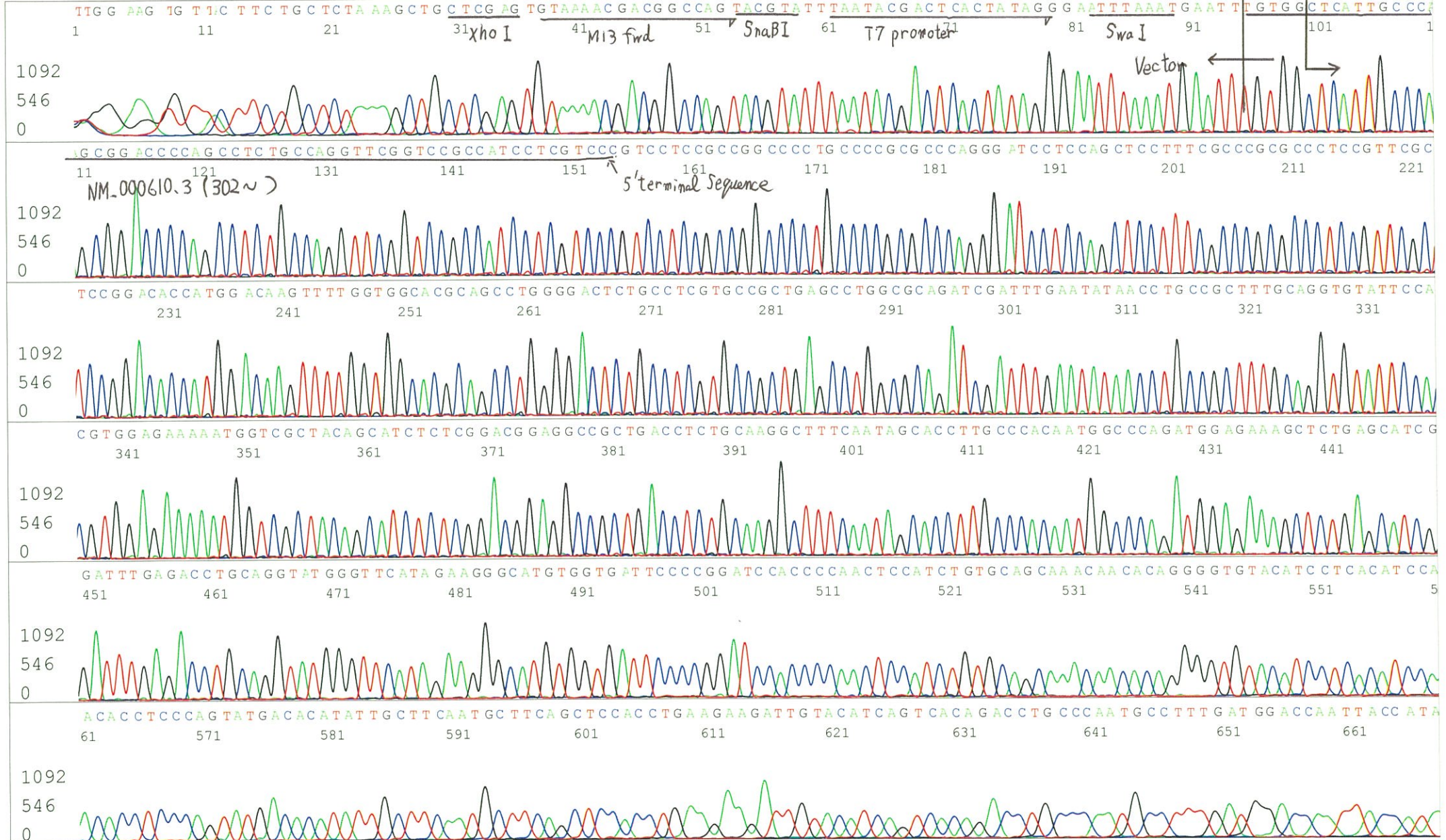


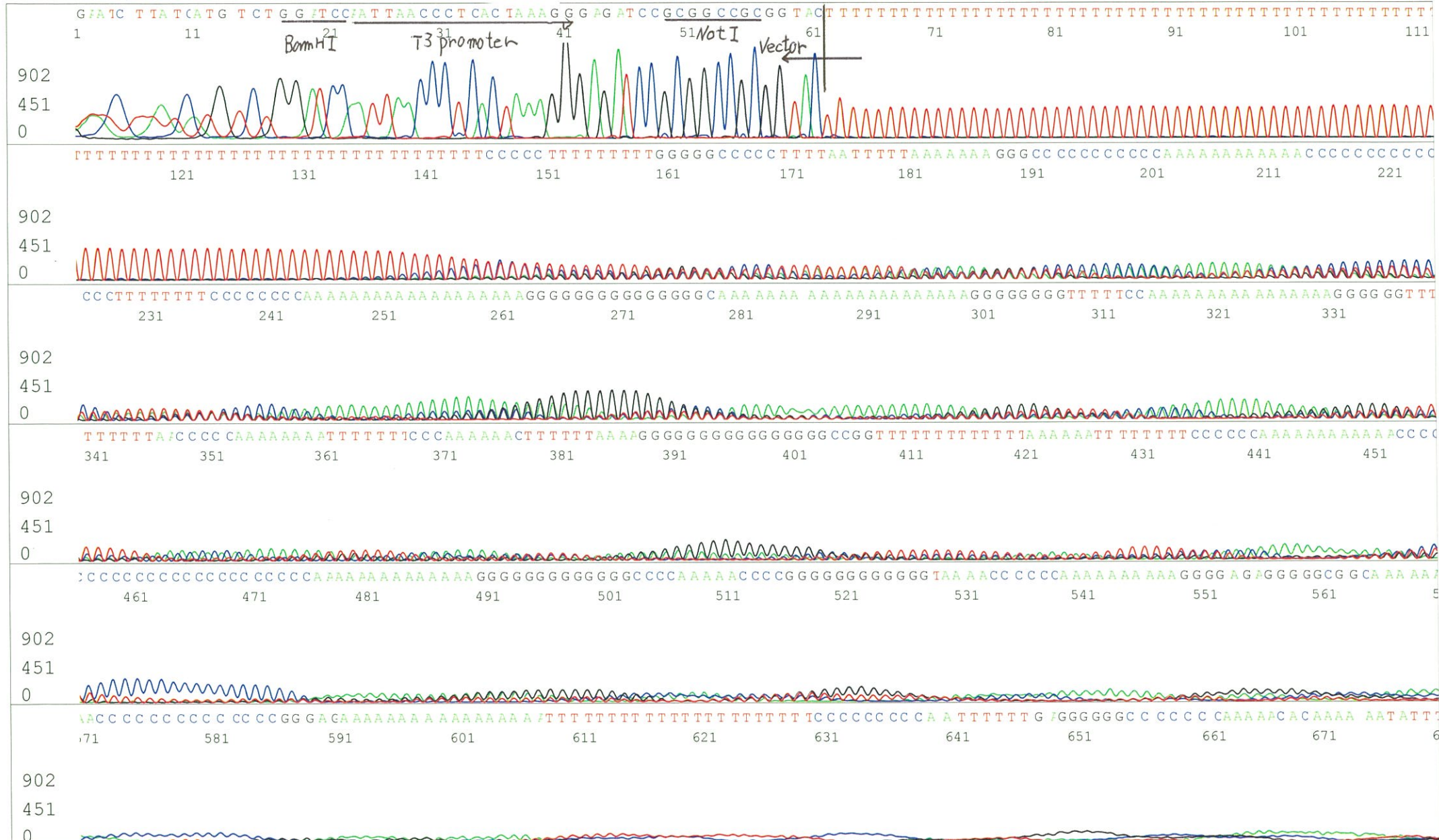
~~Conc. : ng/ul, Volume : ul~~

APPROVED BY :



S/N G:214 A:210 T:213 C:28 Primer A : pGCAP-F
KB.bcp
KB 1.4.1.8 Cap:3 5' CTCAGTGGATGTTGCCTTTAC 3'





S/N G:127 A:165 T:162 C:149
KB.bcp
KB 1.4.1.8 Cap:9

Primer C : Poly(A) region primer #0

7675_ARi29B10_A7J6_III_GNPmixture
KB_3500_POP7_BDTv3.mob
Pts 1807 to 8706 Pk1 Loc:1775
Version 6.0 HiSQV Bases: 708

Oct 18,2017 10:09AM, JST
Oct 18,2017 10:23AM, JST
Spacing:10.49 Pts/Panel1350
Plate Name: 20171018_GNP

5' TTTTTTTTTTTTTTTTTTTTTTNNN 3'

