

RIKEN Clone ID : ARi28H12

Vector : pGCAP10

Gene	RTN4		
RefSeq_mRNA	NM_020532.4	4871 bp	1..4871
	<i>CDS</i>	3579 bp	299..3877
	5' position		148

● Plasmid DNA purification

Date : 140717

Culture : LB (100 ug/ml Ampicillin) 5 ml -> at 37 deg C O/N

Date : 140718

Purification : QIAGEN Miniprep kit -> dH₂O 100 ul

● Digestion by restriction enzyme/Concentration calibration

Date : 140718

DNA concentration (O.D.): 20 ng/ul

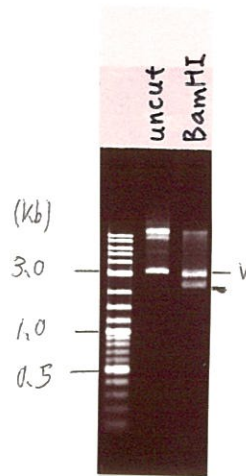
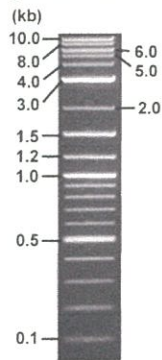
<Size of fragment expected from ARi28H12 >

DNA	3	ul
Enzyme (BamHI)	1	ul
Buffer H	1	ul
dH ₂ O	5	ul
Total	10	ul

BamHI 3183(vector), 4925 bp (unsure)

Electrophoresis : 1% agarose gel, 1x TAE Buffer

Marker : 2-Log DNA Ladder (NEB#N3200L)



● Confirmation of the insertion sequence

Date : 140726

Primer A	pGCAP-F
Primer B	pGCAP-R
Primer C	Poly(A) region
List of Sequencing Primers	http://dna.brc.riken.jp/en/NRCDhum2en.html

● Adjust plasmid DNA solution to 25 ng/ul

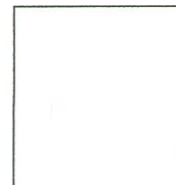
Date : _____

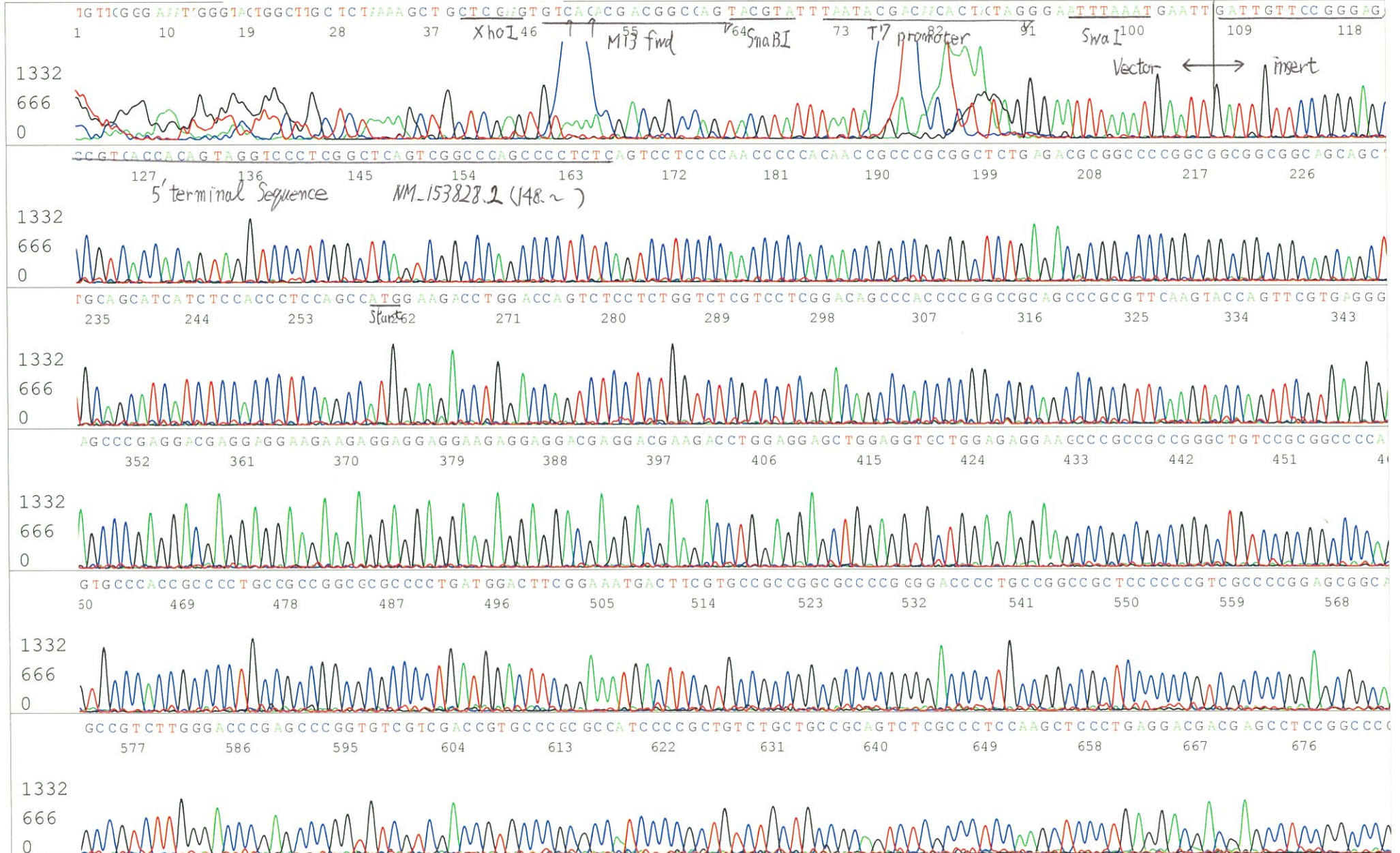
DNA (<u>20</u> ng/ul)	<u>70.0</u> ul
10x TE	ul
dH ₂ O	ul
Total	<u>70.0</u> ul

● Shipping

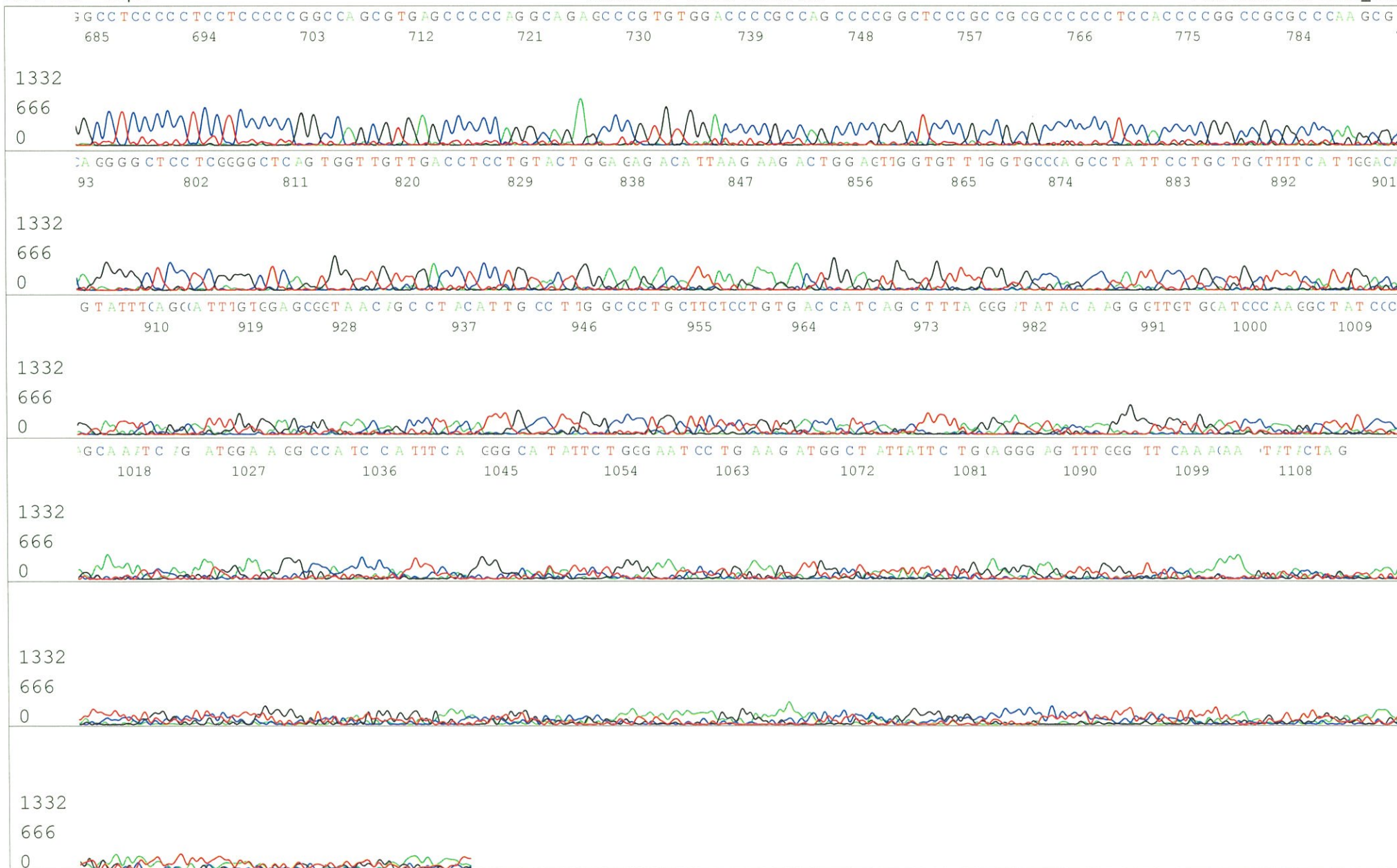
25 ng/ul, vol: 40 ul
 Conc.: 20 ng/ul, Volume: 50 ul

APPROVED BY :



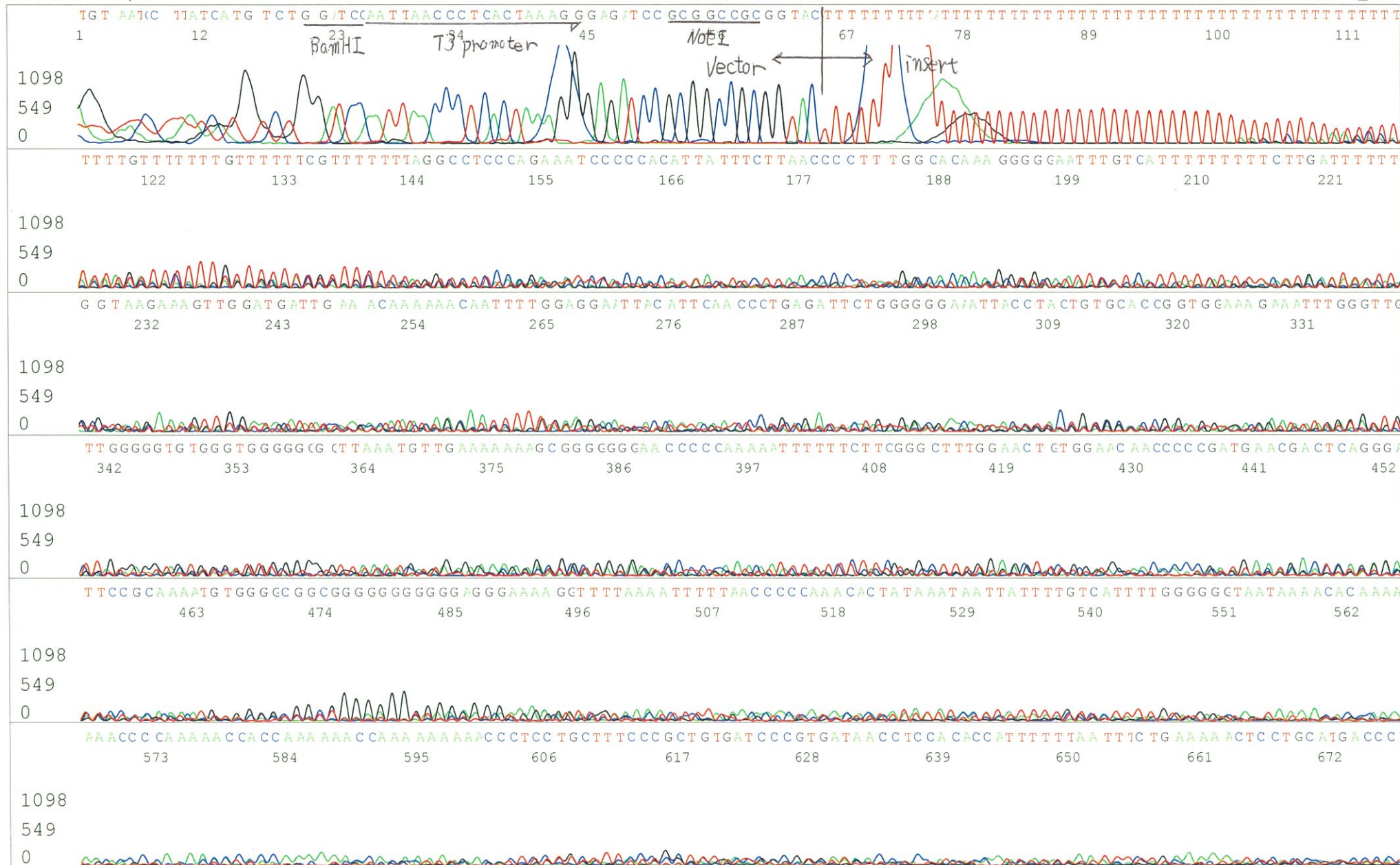


S/N G:10 A:13 T:8 C:14
KB.bcp
KB 1.4.1.8 Cap:1



S/N G:20 A:27 T:30 C:29
KB.bcp
KB 1.4.1.8 Cap:2

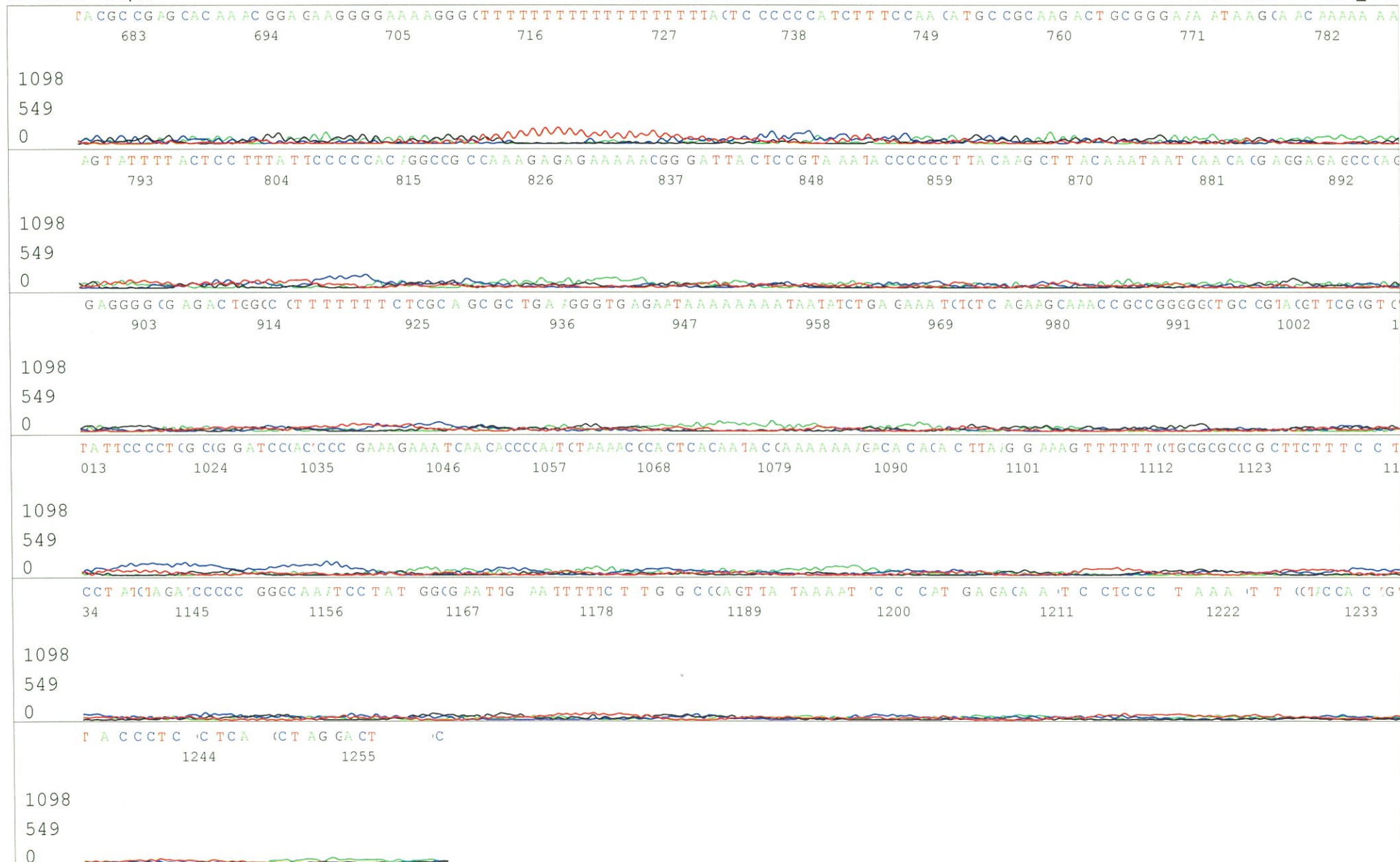
Primer B : pGCAP-R
5' GCATTCTAGTTGTGGTTTGTCC 3'



S/N G:20 A:27 T:30 C:29

KB.bcp

KB 1.4.1.8 Cap:2



S/N G:64 A:80 T:57 C:44

Primer C : Poly(A) region primer #0

7675_ARi28H12_A4Gh_GNPmixture

Jul 26,2014 01:41PM, JST

KB.bcp

KB_3500_POP7_BDTv3.mob

Jul 26,2014 02:10PM, JST

KB 1.4.1.8 Cap:3

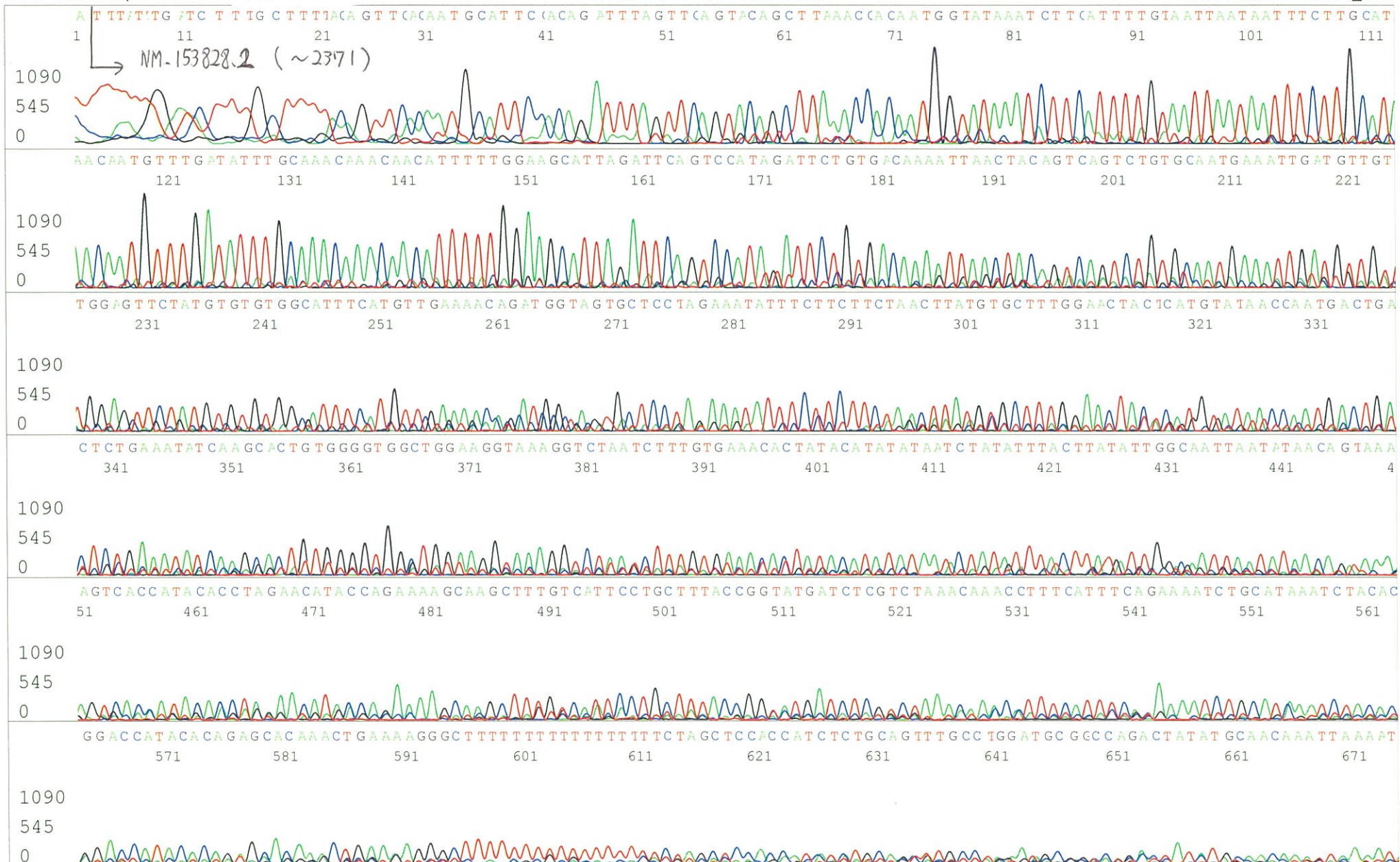
5' TTTTTTTTTTTTTTTTTTTTTNNN 3'

Pts 1453 to 13467 Pk1 Loc:1430

Spacing:12.09 Pts/Panel1350

Version 5.4 HiSQV Bases: 661

Plate Name: 20140731_GNP



S/N G:64 A:80 T:57 C:44
KB.bcp
KB 1.4.1.8 Cap:3

