

RIKEN Clone ID : ARi28A08

Vector : pGCAP10

Gene	DDX58	
RefSeq_mRNA	NM_014314.3	4759 bp
	CDS	2778 bp
5' position		82

● Plasmid DNA purification

Date : 160829

Culture : LB (100 ug/ml Ampicillin) 5 ml -> at 37 deg C O/N

Date : 160830

Purification : QIAGEN Miniprep kit -> dH₂O 100 ul

● Digestion by restriction enzyme/Concentration calibration

Date : 160830

DNA concentration (O.D.): 226 ng/ul

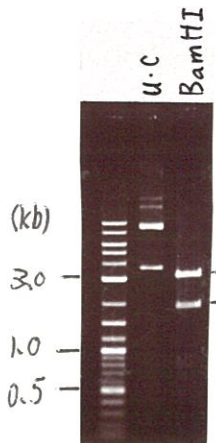
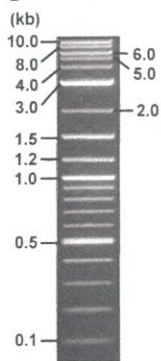
< Size of fragment expected from this clone >

DNA	0.4 ul
Enzyme (BamHI)	1 ul
Buffer H	1 ul
dH ₂ O	7.6 ul
Total	10 ul

BamHI 3.1kb (vector), 2.8, 2.0 kb (unsure)

Erectrophoresis : 1% agarose gel, 1x TAE Buffer

Marker : 2-Log DNA Ladder (NEB#N3200L)



● Confirmation of the insertion sequence

Date : 160901

Primer A	pGCAP-F
Primer B	pGCAP-R
Primer C	Poly(A) region
List of Sequencing Primers	http://dna.brc.riken.jp/en/NRCDhum2en.html

● Adjust plasmid DNA solution to 25 ng/ul

Date : 160902

DNA (<u>226</u> ng/ul)	<u>85.0</u> ul
10x TE	<u>76.8</u> ul
dH ₂ O	<u>606.6</u> ul
Total	<u>768.4</u> ul

● Shipping



Conc. : 25 ng/μl, Volume : 40 μl



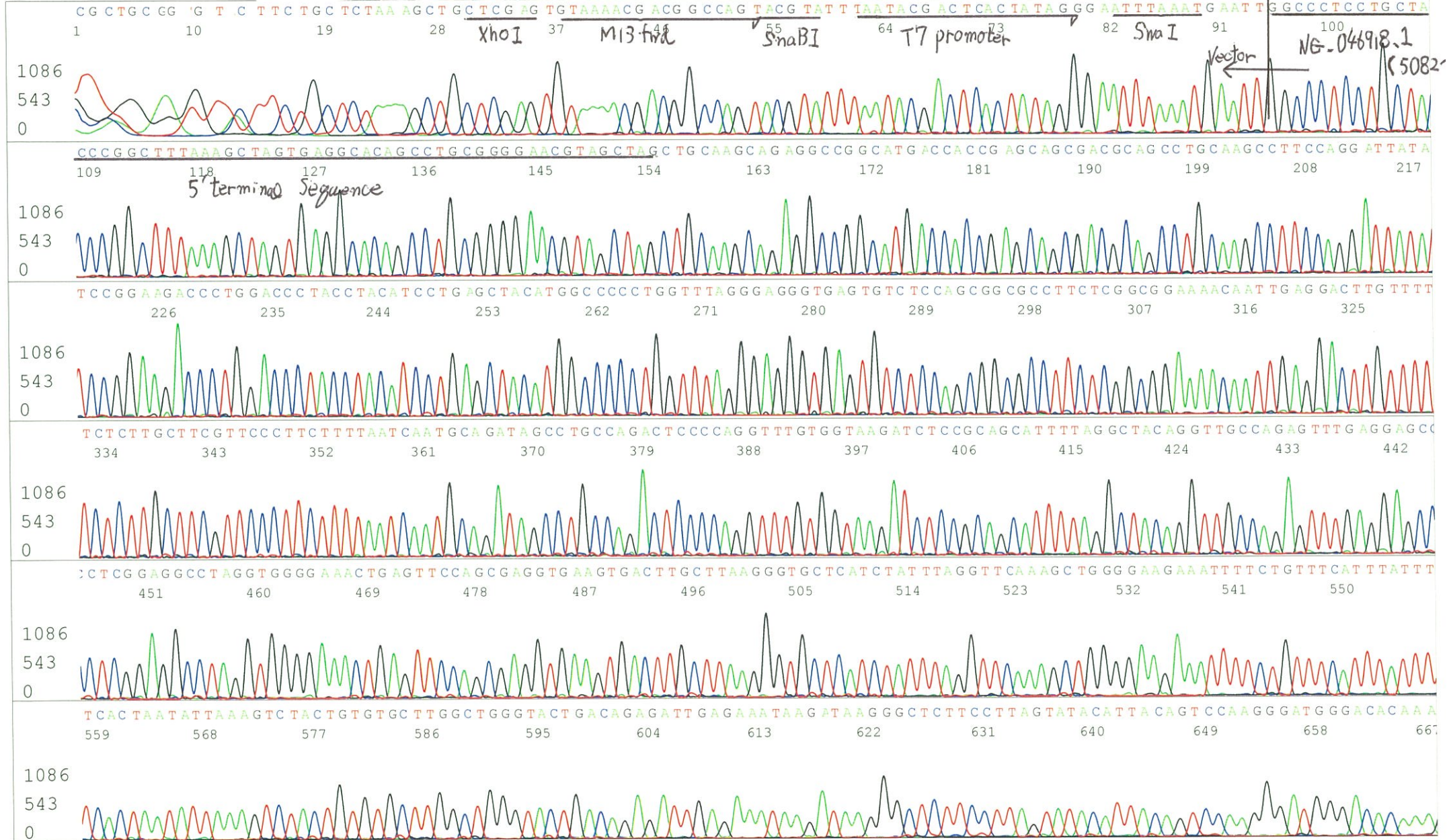
Conc. : ___ ng/μl, Volume : ___ μl



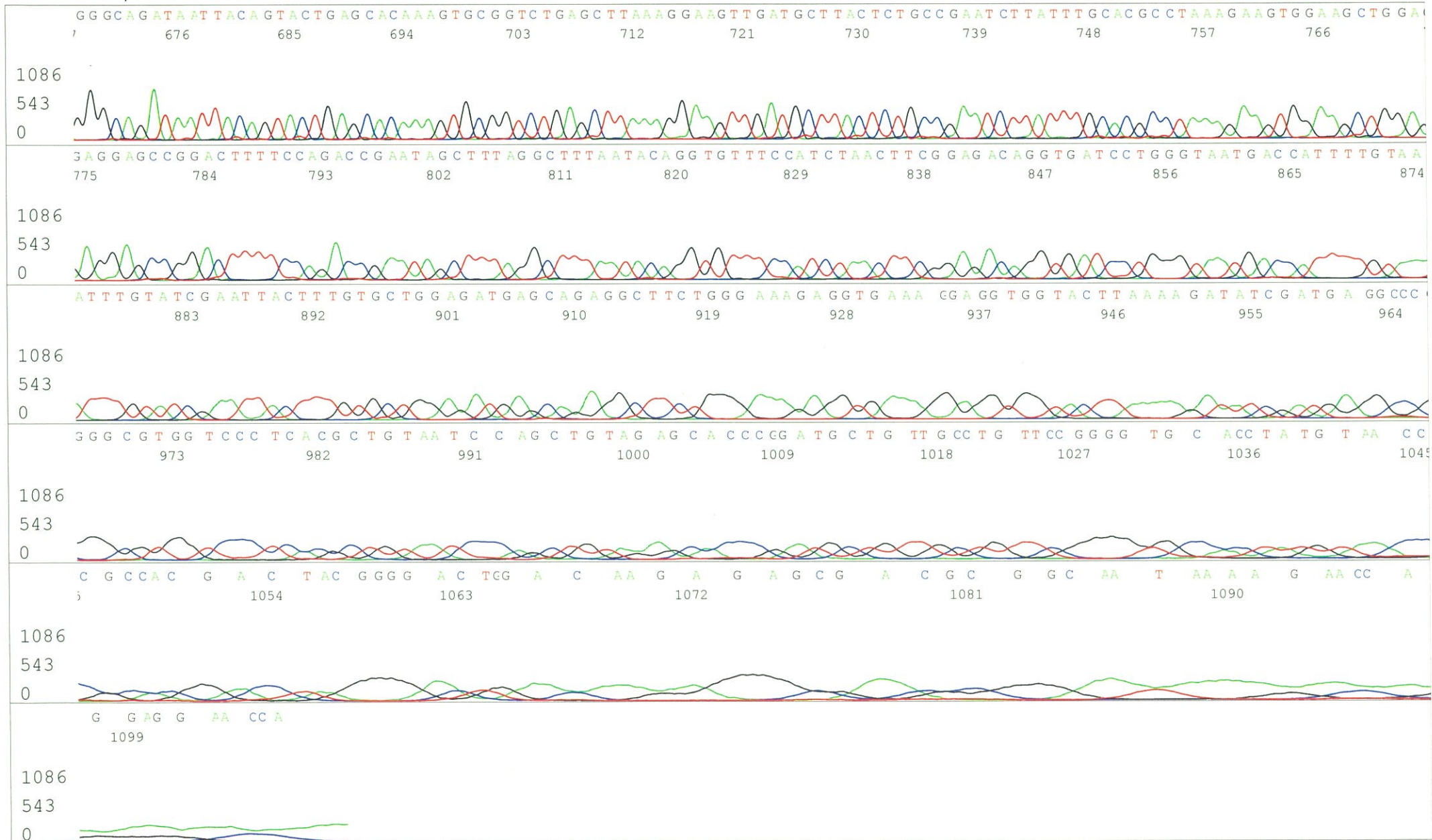
APPROVED BY :

S/N G:433 A:449 T:427 C:545
KB.bcp
KB 1.4.1.8 Cap:12

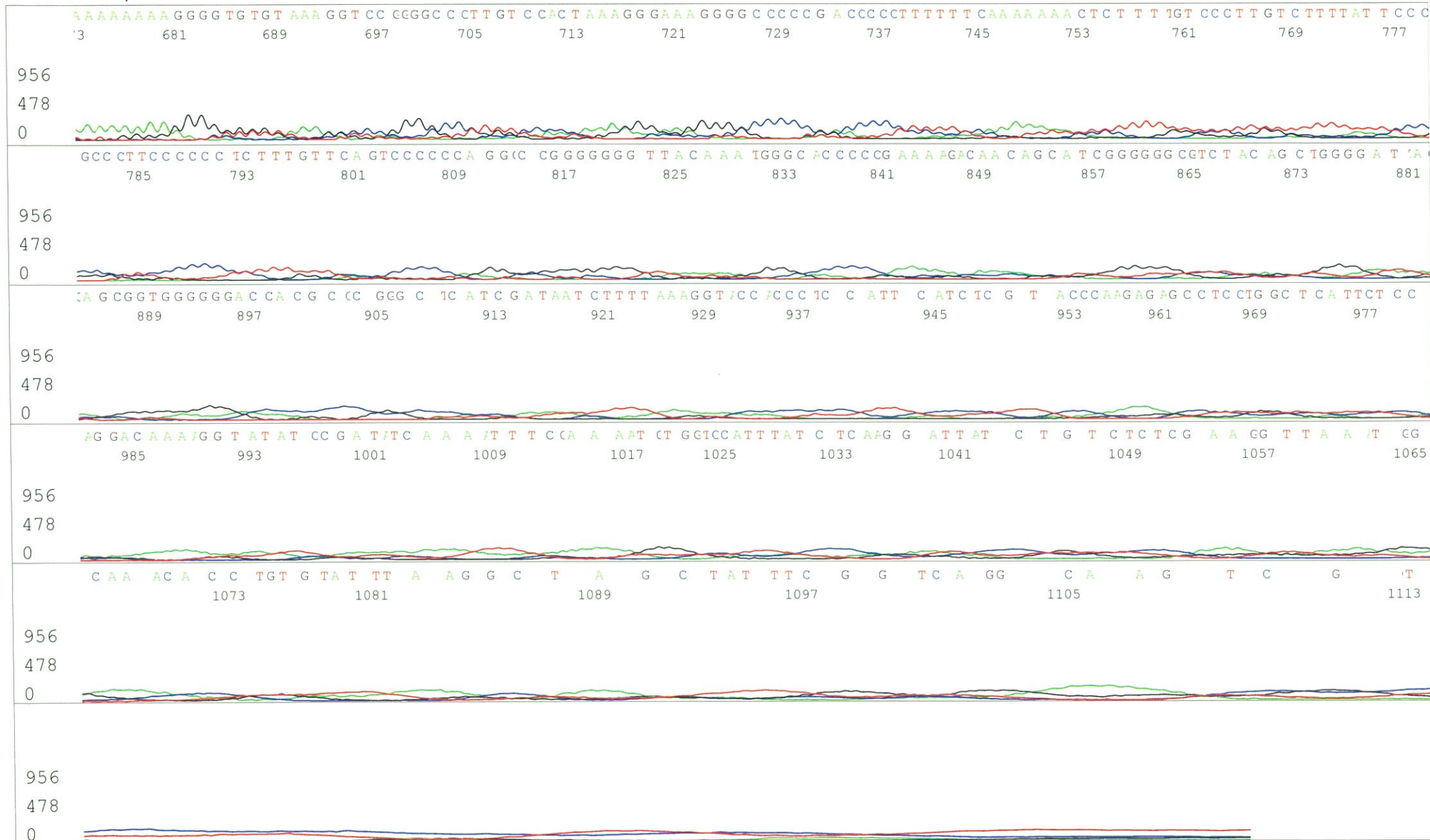
Primer A : pGCAP-F
5' CTCAGTGGATGTTGCCTTTAC 3'



S/N G:433 A:449 T:427 C:545
KB.bcp
KB 1.4.1.8 Cap:12



S/N G:132 A:138 T:185 C:194
KB.bcp
KB 1.4.1.8 Cap:15



S/N G:128 A:121 T:146 C:186
KB.bcp
KB 1.4.1.8 Cap:18

Primer C : Poly(A) region primer #0

7675_Ari28A08_A6Ht_GNPmixture

KB_3500_POP7_BDTv3.mob

Pts 1467 to 12372 Pk1 Loc:1444

Version 6.0 HiSQV Bases: 940

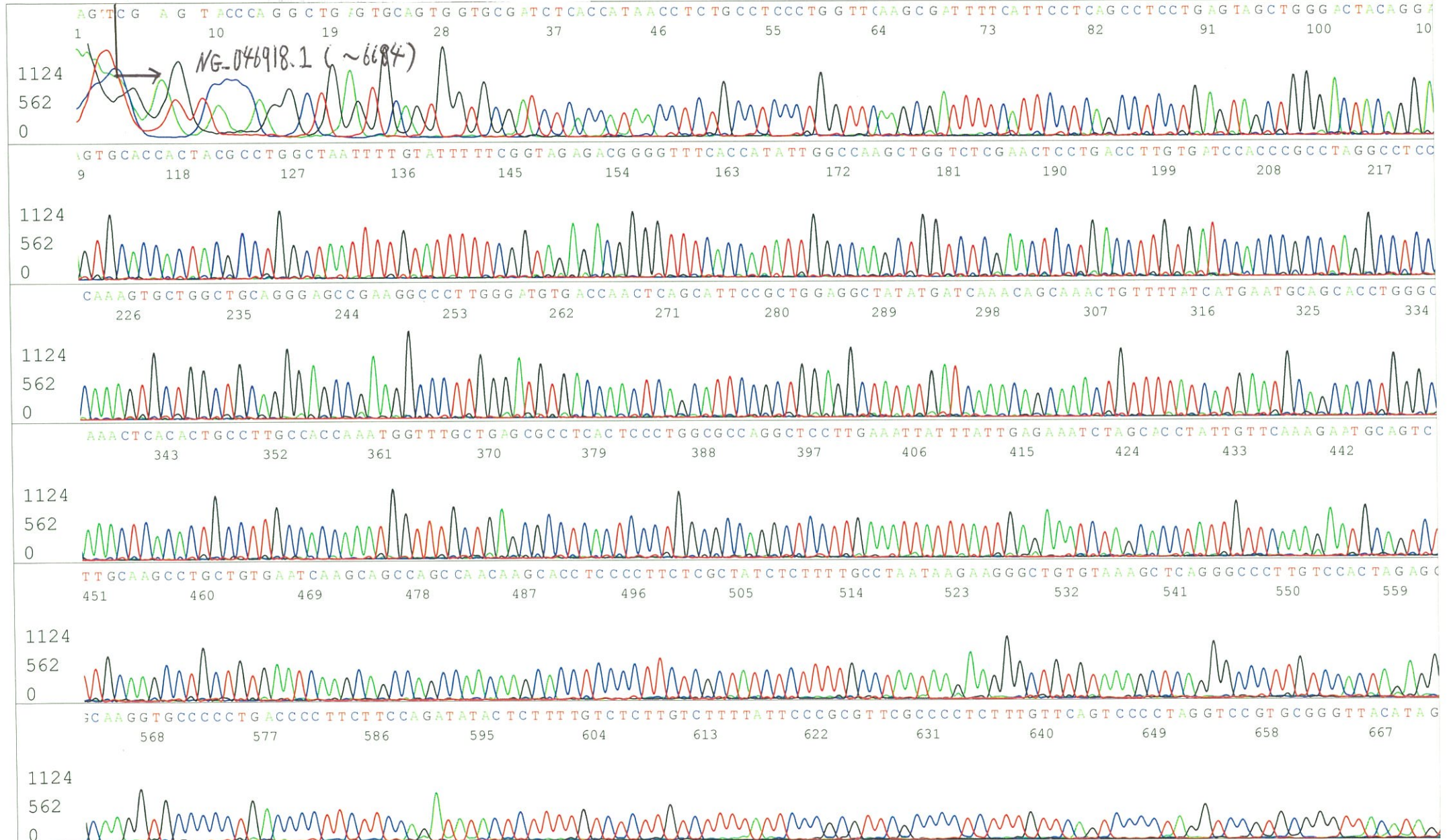
Sep 01,2016 10:04AM, JST

Sep 01,2016 10:30AM, JST

Spacing:11.0 Pts/Panel1350

Plate Name: 20160901_GNP

5' TTTTTTTTTTTTTTTTTTTTTTNNN 3'



S/N G:128 A:121 T:146 C:186
KB.bcp
KB 1.4.1.8 Cap:18

