

RIKEN Clone ID : ARi22F02

Vector : pGCAP10

Gene	IRF5	
RefSeq_mRNA	NM_002200.3	2870 bp
	<i>CDS</i>	1515 bp
		122..1636
	<i>5'-terminal sequence</i>	2847 bp
		24..2870

● Plasmid DNA purification

Date : 120920

Culture : LB (100 ug/ml Ampicillin) 5 ml -> at 37 deg C over night

Date : 120921

Purification : QIAGEN Miniprep kit -> dH₂O 100 ul

● Digestion by restriction enzyme/Concentration calibration

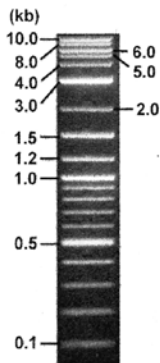
Date : 120921

DNA concentration (O.D.): 137 ng/ul

DNA	0.4	ul
Enzyme (BamHI)		1 ul
Buffer H		1 ul
dH ₂ O	7.6	ul
Total		10 ul

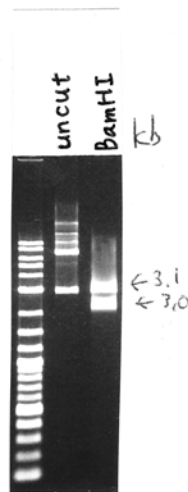
Electrophoresis : 1% agarose gel, 1x TAE Buffer

Marker : 2-Log DNA Ladder (NEB#N3200L)



<Expected size of fragment from ARi22F02 >

3138, 3071bp (inference)



● Confirmation of the insertion sequence

Date : 120926

Primer A	pGCAP-F
Primer B	pGCAP-R
Primer C	Poly(A) region primer
List of Sequencing Primers	http://dna.brc.riken.jp/en/NRCDhum2en.html

● Adjustment of DNA concentration

Shipping amount : 40 ul

Concentration at the time of preparation of plasmid DNA : 25 ng/ul

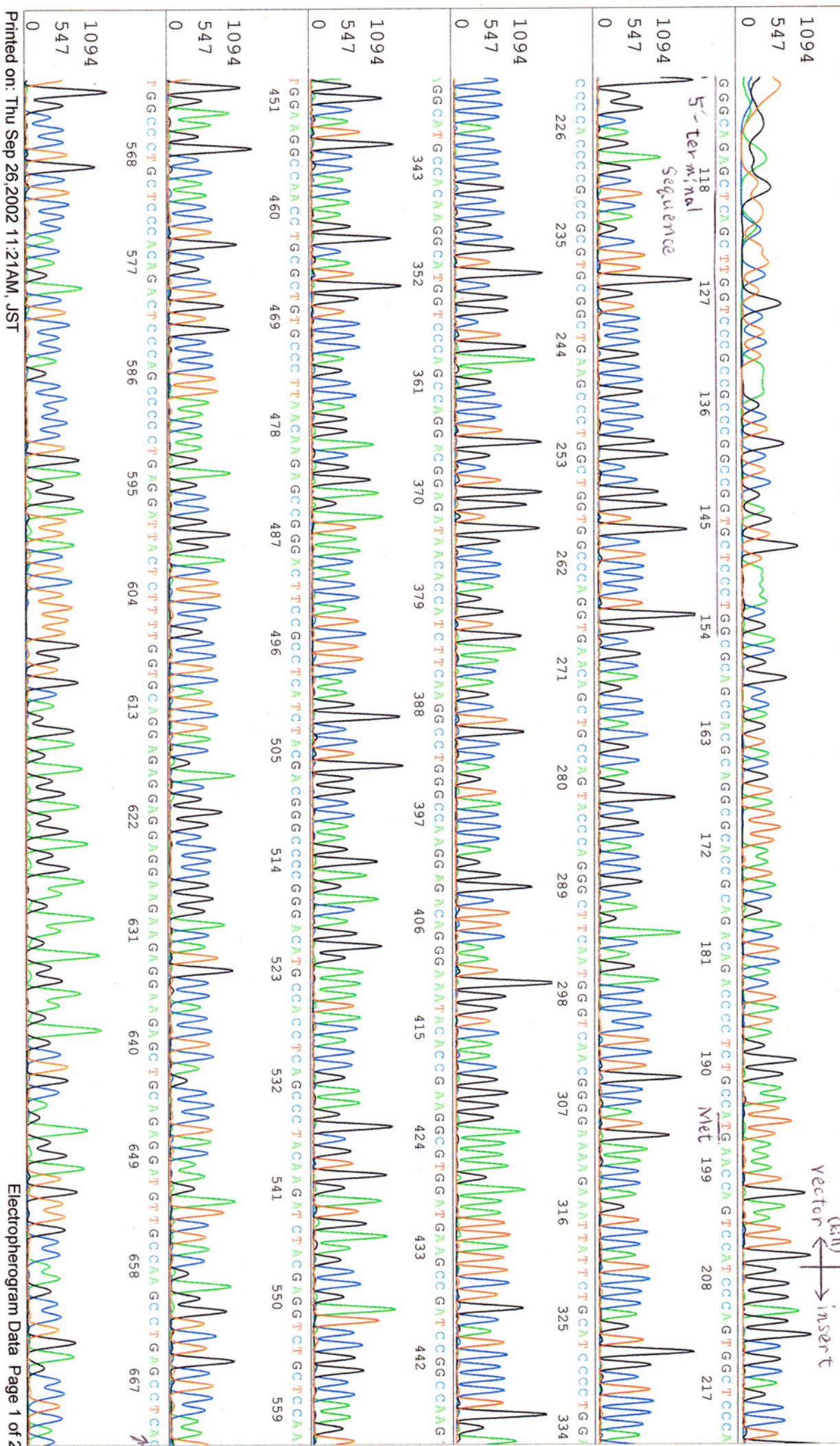
Date : 120926

DNA (<u>137</u> ng/ul)	85	ul
10x TE	46.5	ul
dH ₂ O	334.3	ul
Total	465.8	ul



APPROVED BY :

<http://dna.brc.riken.jp/index.html>



S/N G:445 A:356 T:306 C:361
KB.bcp
KB 1.4.1.8 Cap:17

Primer C : Poly(A) region primer #0
5' TTTTYYYYTTTTTTTTTTTTTTTTNNN 3'

Sep 26, 2002 09:14AM, JST
Sep 26, 2002 09:40AM, JST
Spacing: 11.19 Pts/Panel1350
Plate Name: 20120926_DNAbank-GNP

