

RIKEN Clone ID : ARi19C12

Vector : pGCAP10

Gene	RAD54L	
RefSeq_mRNA	NM_003579.4	3078 bp

● Plasmid DNA purification

Date : 22.03.28

Culture : LB (100 ug/ml Ampicillin) 5 ml -> at 37 deg C O/N

Date : 22.03.29

Purification : QIAGEN Miniprep kit -> dH₂O 100 ul

● Digestion by restriction enzyme/Concentration calibration

Date : 22.03.29

DNA concentration (O.D.): 336 ng/ul

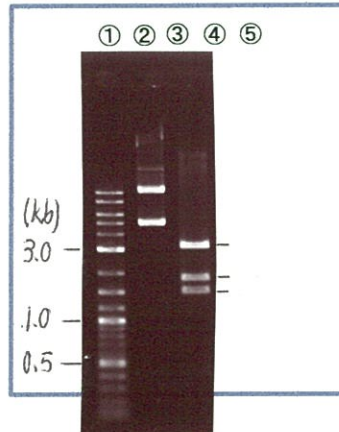
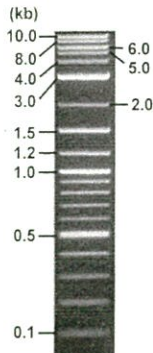
< Size of fragment expected from this clone >

DNA	0.3 ul
Enzyme (BamHI)	1 ul
Buffer H	1 ul
dH ₂ O	7.7 ul
Total	10 ul

BamHI 3.1kb (vector), 1.8, 1.5 kb (unsure)

Electrophoresis : 1% agarose gel, 1x TAE Buffer

Marker : 2-Log DNA Ladder (NEB#N3200L)



①:Marker
②:uncut
③:BamHI

● Confirmation of the insertion sequence

Date : 22.05.19

Primer A	pGCAP-F
Primer B	pGCAP-R
Primer C	Poly(A) region
List of Sequencing Primers	http://dna.brc.riken.jp/en/NRCDhum2en.html

● Adjust plasmid DNA solution to 25 ng/ul

Date : 22.05.26

DNA (336 ng/ul)	80.0 ul
10x TE	107.5 ul
dH ₂ O	887.7 ul
Total	1075.2 ul

● Shipping



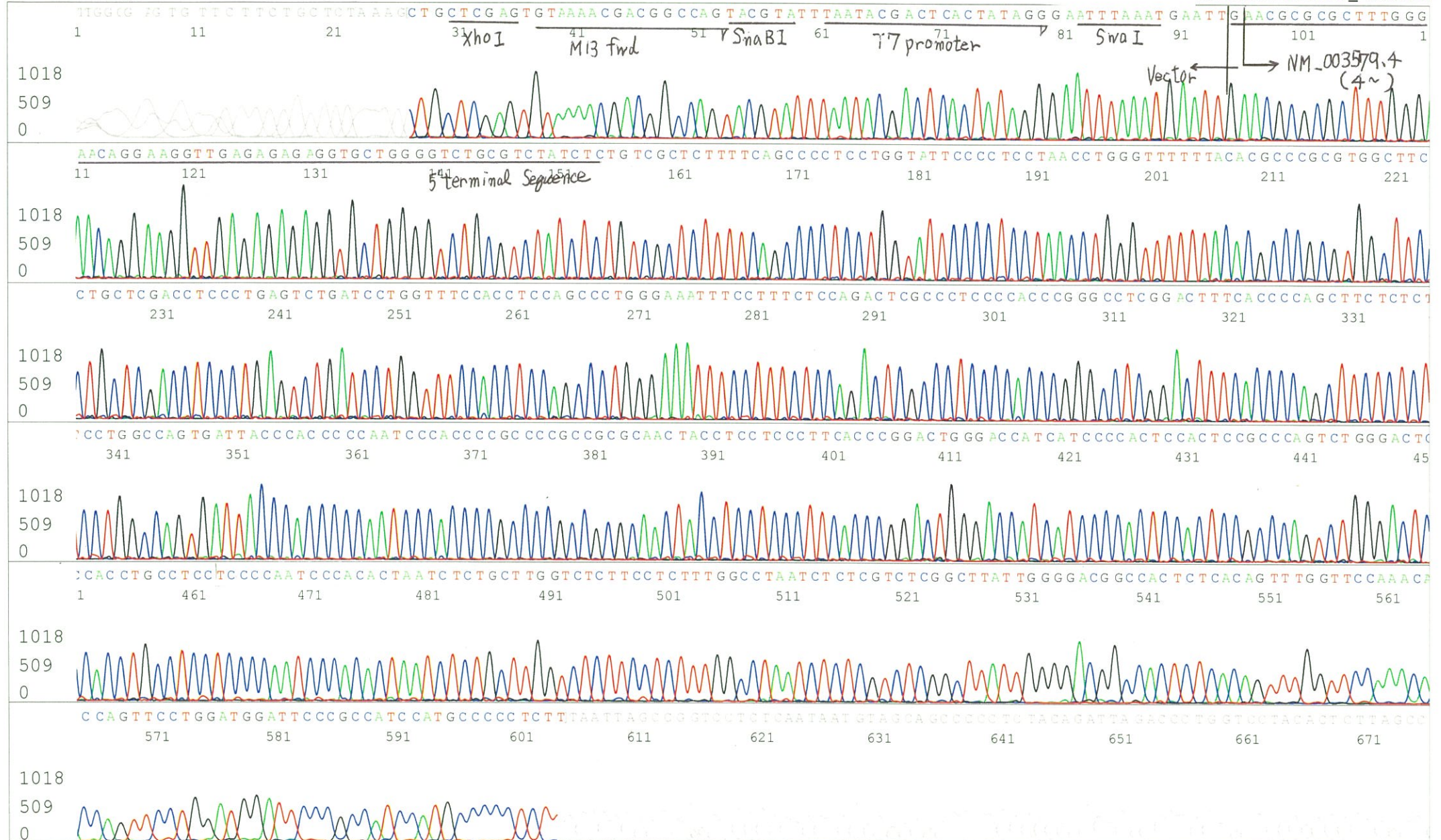
Conc. : 25 ng/μl, Volume : 40 μl

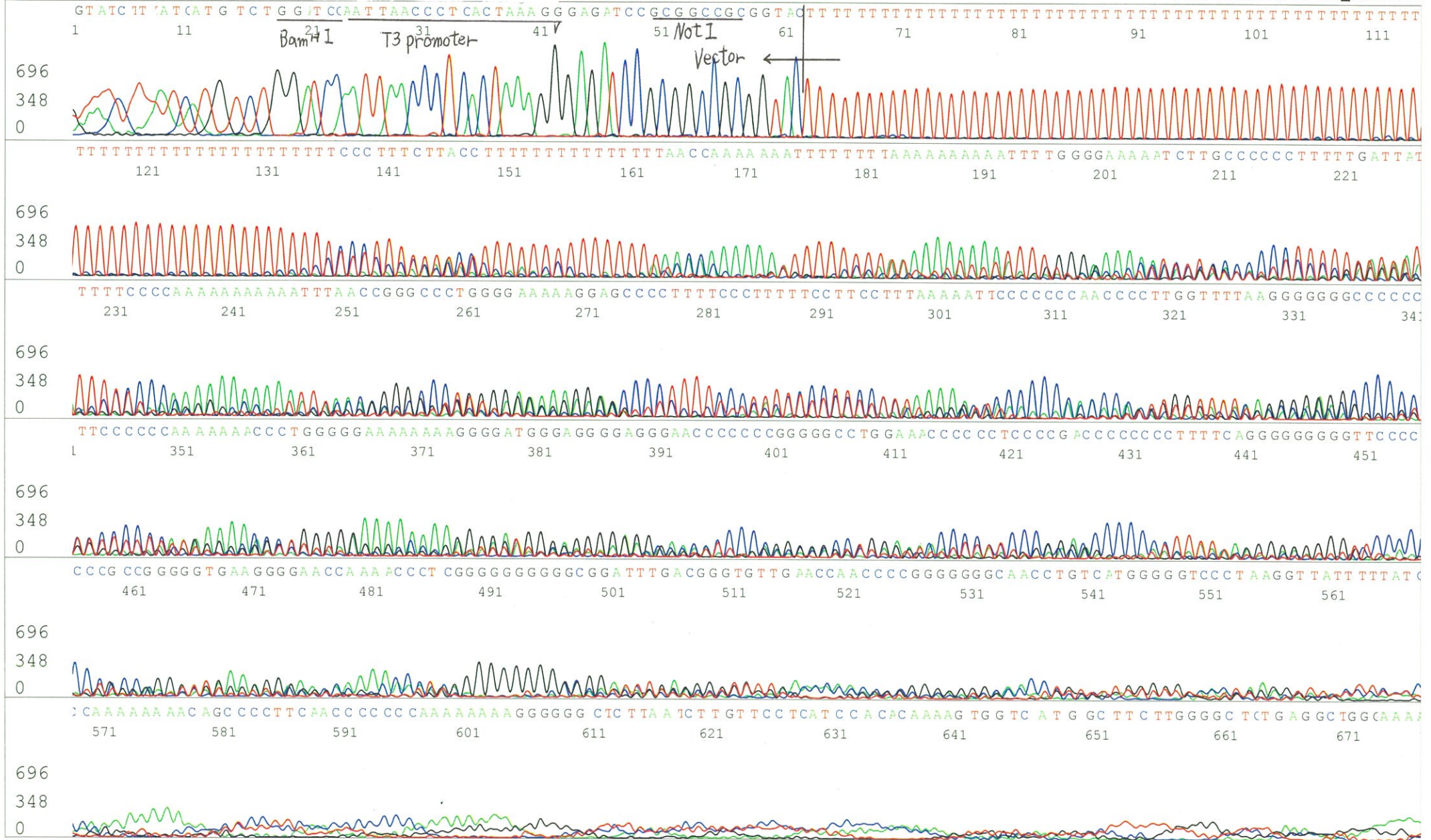


~~Conc. : ___ ng/μl, Volume : ___ μl~~

APPROVED BY :







S/N G:45 A:42 T:22 C:33
KB.bcp
KB 1.4.1.8 Cap:3

Primer C : Poly(A) region primer #0
5' TTTTTTTTTTTTTTTTTTTTTTVNN 3'

7675_ARi19C12_B2Cs_GNPmixture_C01_03_ABI08
7675_ARi19C12_B2Cs_GNPmixture
KB_3500_POP7_BDTv3.mob
Pts 1720 to 8704 Pk1 Loc:1688
Version 6.0 HiSQV Bases: 673

Inst Model/Name 3500/3500 Instrument
Mar 30,2022 09:43AM, JST
Mar 30,2022 10:00AM, JST
Spacing:10.92 Pts/Panel1350
Plate Name: 20220330_KatoClone

