

RIKEN Clone ID : ARi11A04

Vector : pGCAP10

Gene	CAPN2	
RefSeq_mRNA	NM_001748.5	3366 bp

● Plasmid DNA purification

Date : 22.06.08

Culture : LB (100 ug/ml Ampicillin) 5 ml -> at 37 deg C O/N

Date : 22.06.09

Purification : QIAGEN Miniprep kit -> dH₂O 100 ul

● Digestion by restriction enzyme/Concentration calibration

Date : 22.06.09

DNA concentration (O.D.): 74 ng/ul

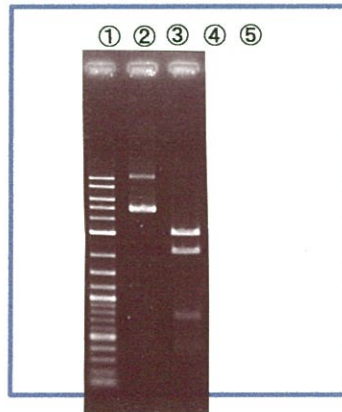
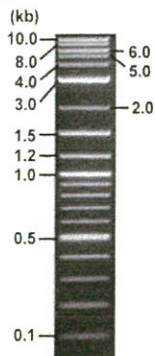
< Size of fragment expected from this clone >

DNA	<u>1.3</u> ul
Enzyme (BamHI)	1 ul
Buffer H	1 ul
dH ₂ O	<u>6.7</u> ul
Total	10 ul

BamHI 3.1kb (vector), 2.2, 0.7, 0.5 kb (unsure)

Erectrophoresis : 1% agarose gel, 1x TAE Buffer

Marker : 2-Log DNA Ladder (NEB#N3200L)



①:Marker
②:uncut
③:BamHI

● Confirmation of the insertion sequence

Date : 22.06.29

Primer A	pGCAP-F
Primer B	pGCAP-R
Primer C	Poly(A) region
List of Sequencing Primers	http://dna.brc.riken.jp/en/NRCDhum2e.html

● Adjust plasmid DNA solution to 25 ng/ul

Date : 22.06.30

DNA (<u>74</u> ng/ul)	<u>68.0</u> ul
10x TE	<u>20.1</u> ul
dH ₂ O	<u>113.1</u> ul
Total	201.2 ul

● Shipping



Conc. : 25 ng/μl, Volume : 40 μl



~~Conc. : ng/μl, Volume : μl~~

APPROVED BY :



