

RIKEN Clone ID : ARi06B06

Vector : pGCAP10

Gene	BCL6		
RefSeq_mRNA	NM_001706.4	3575 bp	1..3575
	<i>CDS</i>	2121 bp	366..2486
	<i>5'-terminal sequence</i>	3303 bp	273..3575

● Plasmid DNA purification

Date : 130729

Culture : LB (100 ug/ml Ampicillin) 5 ml -> at 37 deg C O/N

Date : 130730

Purification : QIAGEN Miniprep kit -> dH₂O 100 ul

● Digestion by restriction enzyme/Concentration calibration

Date : 130730

DNA concentration (O.D.): 310 ng/ul

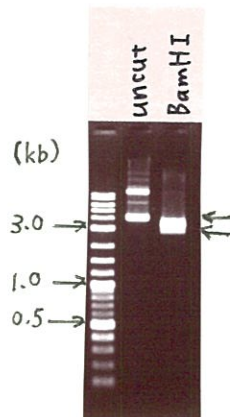
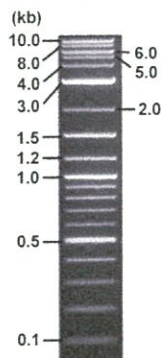
<Size of fragment expected from ARi06B06 >

DNA	0.2	ul
Enzyme (BamHI)	1	ul
Buffer H	1	ul
dH ₂ O	7.8	ul
Total	10	ul

BamHI 3183 3504bp

Electrophoresis : 1% agarose gel, 1x TAE Buffer

Marker : 2-Log DNA Ladder (NEB#N3200L)



● Confirmation of the insertion sequence

Date : 130802

Primer A	pGCAP-F
Primer B	pGCAP-R
Primer C	Poly(A) region
List of Sequencing Primers	http://dna.brc.riken.jp/en/NRCDhum2en.html

● Adjustment of DNA concentration

Shipping amount : 40 ul

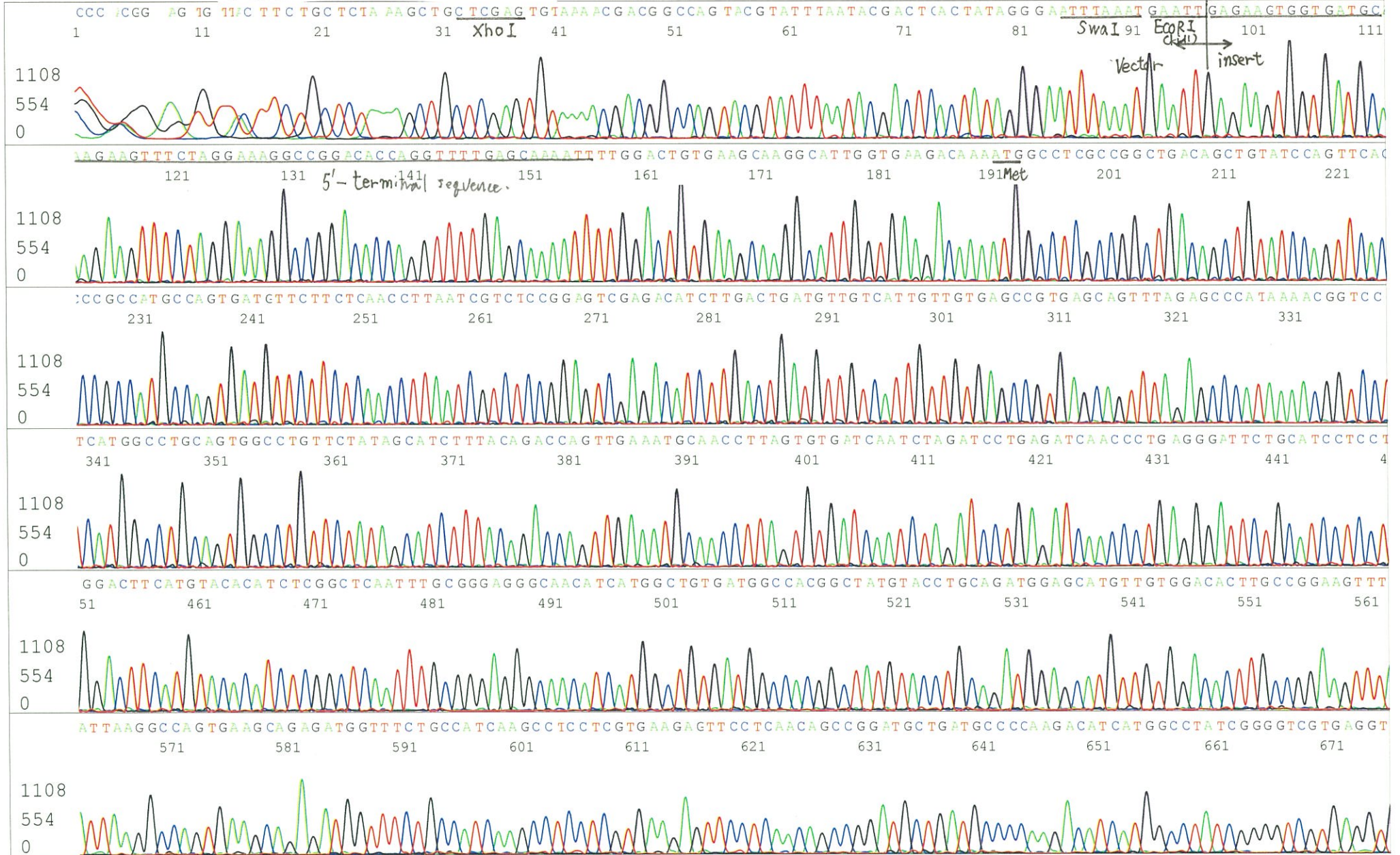
Concentration at the time of preparation of plasmid DNA : 25 ng/ul

Date : 130805

DNA (<u>310</u> ng/ul)	82.0	ul
10x TE	101.7	ul
dH ₂ O	833.1	ul
Total	1016.8	ul



APPROVED BY :



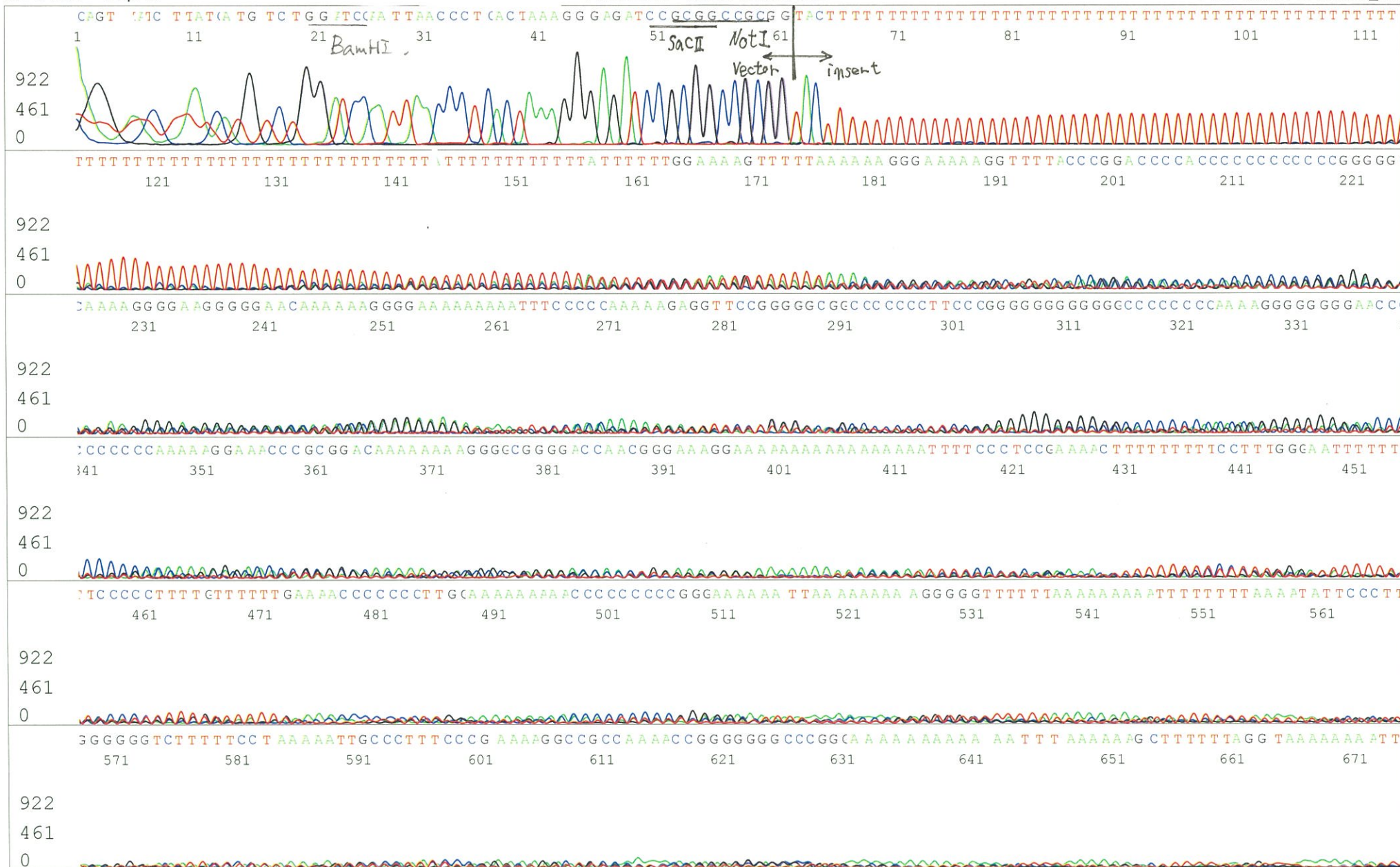
S/N G:504 A:348 T:276 C:293
KB.bcp
KB 1.4.1.8 Cap:7



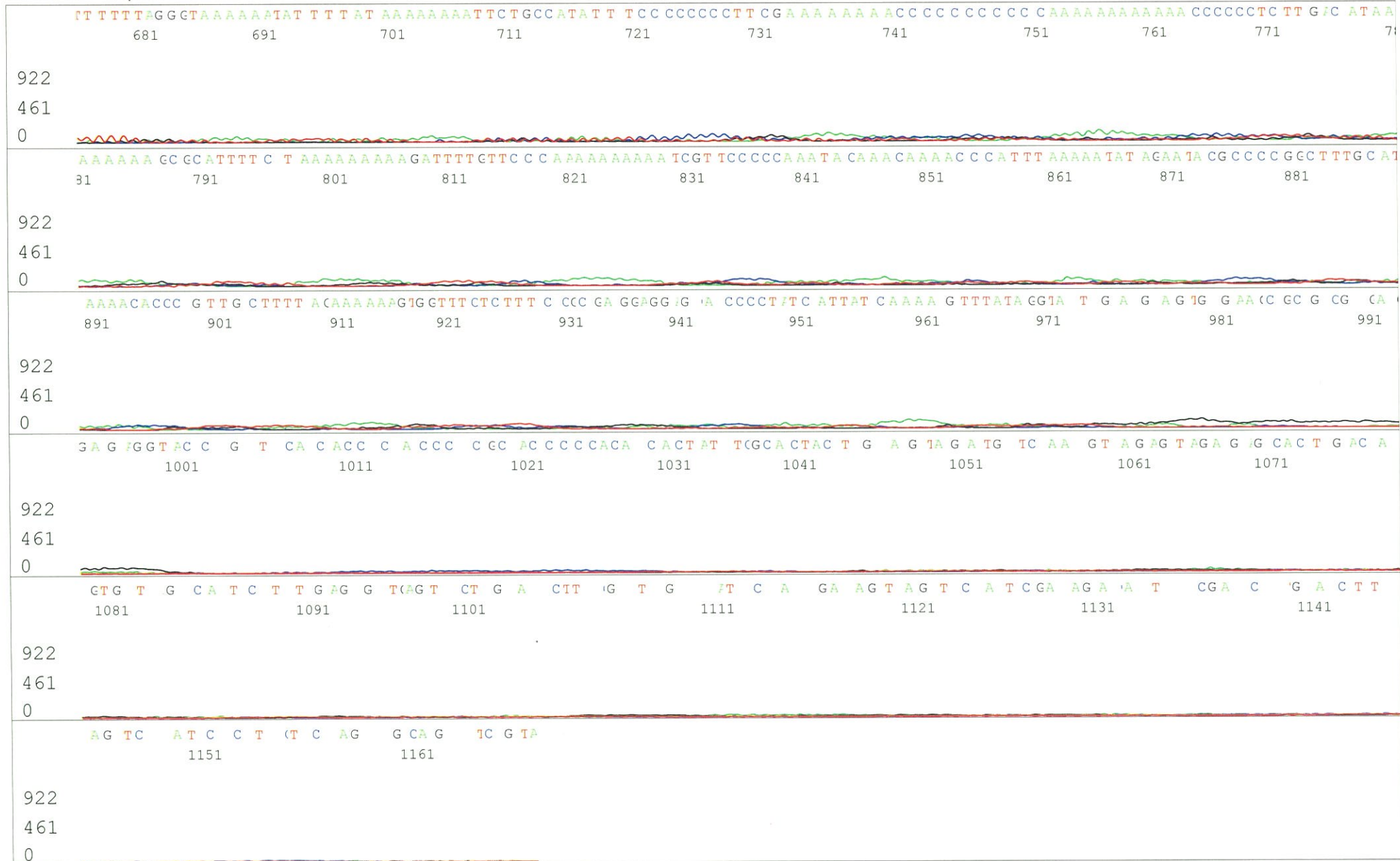
S/N G:87 A:72 T:94 C:63
KB.bcp
KB 1.4.1.8 Cap:10

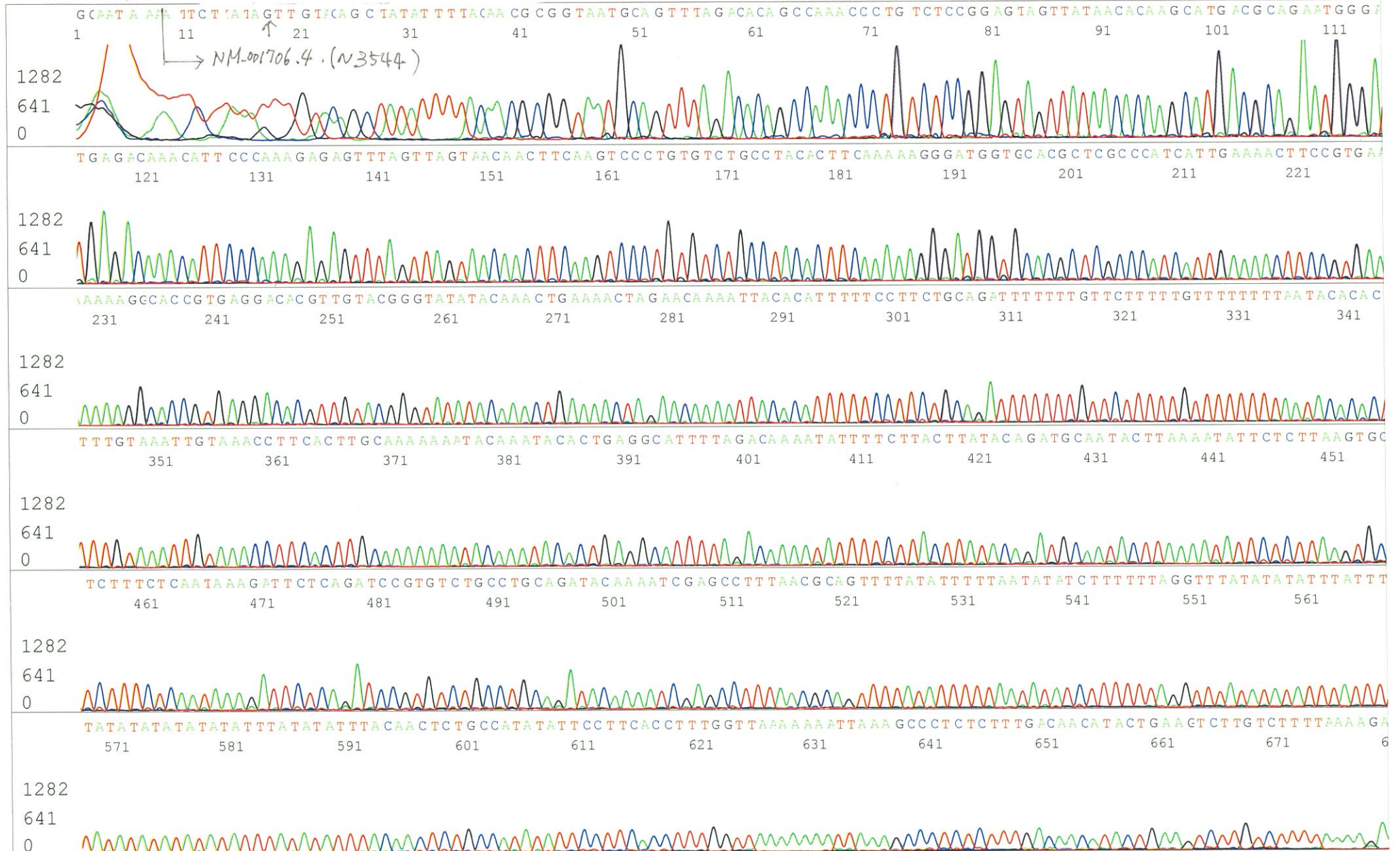
Primer B : pGCAP-R

5' GCATTCTAGTTGTGGTTTTGTCC 3'



S/N G:87 A:72 T:94 C:63
KB.bcp
KB 1.4.1.8 Cap:10





S/N G:78 A:72 T:66 C:54
KB.bcp
KB 1.4.1.8 Cap:13

