

RIKEN Clone ID : ARf02D03

Vector : pKA1U5

| | | |
|-------------|-------------|---------|
| Gene | E2F4 | |
| RefSeq_mRNA | NM_001950.3 | 2100 bp |

● Plasmid DNA purification

Date : 180918

Culture : LB (100 ug/ml Ampicillin) 5 ml -> at 37 deg C O/N

Date : 180919

Purification : QIAGEN Miniprep kit -> dH₂O 100 ul

● Digestion by restriction enzyme/Concentration calibration

Date : 180919

DNA concentration (O.D.): 76 ng/ul

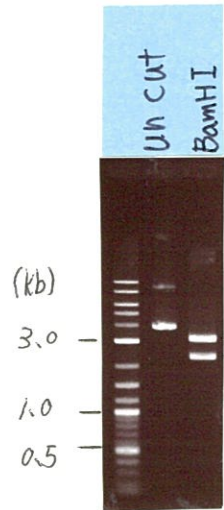
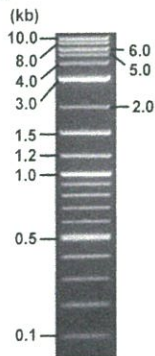
< Size of fragment expected from this clone >

| | |
|-------------------|---------------|
| DNA | <u>1.3</u> ul |
| Enzyme (BamHI) | 1 ul |
| Buffer H | 1 ul |
| dH ₂ O | <u>6.7</u> ul |
| Total | 10 ul |

BamHI 3.1kb (vector), 2.3 kb (unsure)

Electrophoresis : 1% agarose gel, 1x TAE Buffer

Marker : 2-Log DNA Ladder (NEB#N3200L)



● Confirmation of the insertion sequence

Date : 180921

| | |
|----------------------------|---|
| Primer A | pGCAP-F |
| Primer B | pGCAP-R |
| Primer C | Poly(A) region |
| List of Sequencing Primers | http://dna.brc.riken.jp/en/NRCDhum2en.html |

● Adjust plasmid DNA solution to 25 ng/ul

Date : 181002

| | |
|------------------------|-----------------|
| DNA (<u>76</u> ng/ul) | <u>84.0</u> ul |
| 10x TE | <u>25.5</u> ul |
| dH ₂ O | <u>145.8</u> ul |
| Total | 255.3 ul |

● Shipping



Conc. : 25 ng/μl, Volume : 40 μl



~~Conc. : ng/μl, Volume : μl~~

APPROVED BY :



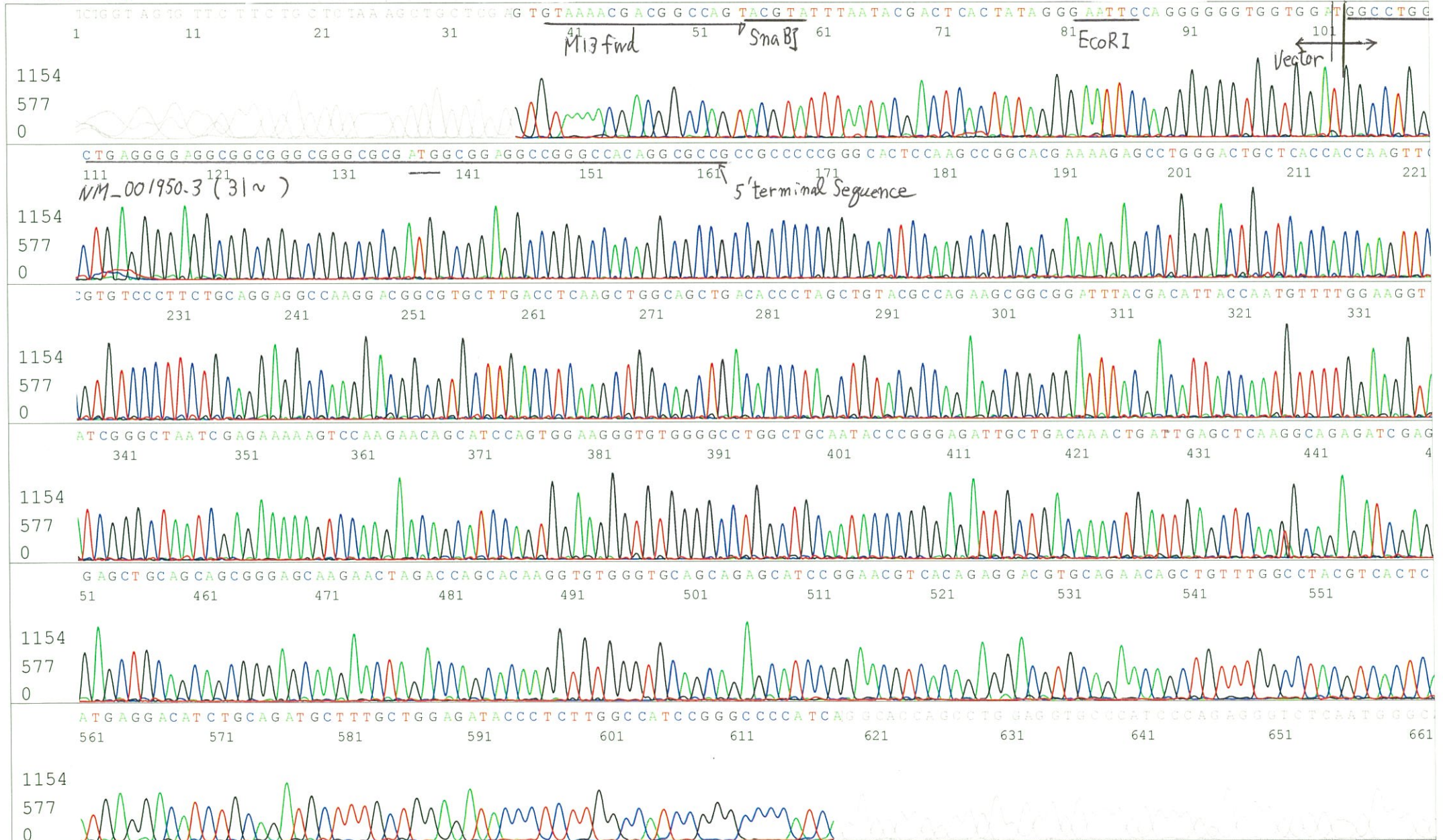
S/N G:230 A:260 T:155 C:342
KB.bcp
KB 1.4.1.8 Cap:1

Primer A : pGCAP-F
5' CTCAGTGGATGTTGCCTTTAC 3'

ARf02D03_A8li_pGCAP-F
KB_3500_POP7_BDTV3.mob
Pts 1893 to 8706 Pk1 Loc:1861
Version 6.0 HiSQV Bases: 701

Gray line indicates quality value
(QV) < 40.

Sep 21, 2018 10:05AM, JST
Sep 21, 2018 10:21AM, JST
Spacing: 10.36 Pts/Panel1350
Plate Name: 20180921_GNP



S/N G:52 A:58 T:42 C:69
KB.bcp
KB 1.4.1.8 Cap:7

Primer C : Poly(A) region primer #0
5' TTTTTTTTTTTTTTTTTTTNNN 3'

Gray line indicates quality value
(QV) < 40.

