

**RIKEN Clone ID : ARe82G06**

Vector : pKA1U5

Gene	ARHGEF5	
RefSeq_mRNA	NM_005435.3	5505 bp

● Plasmid DNA purification

Date : 180213

Culture : LB (100 ug/ml Ampicillin) 5 ml → at 37 deg C O/N

Date : 180215

Purification : QIAGEN Miniprep kit → dH<sub>2</sub>O 100 ul

● Digestion by restriction enzyme/Concentration calibration

Date : 180215

DNA concentration (O.D.): 106 ng/ul

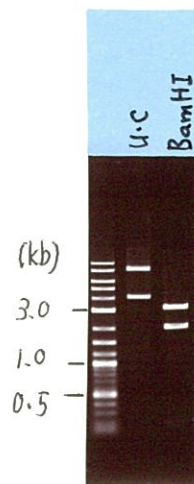
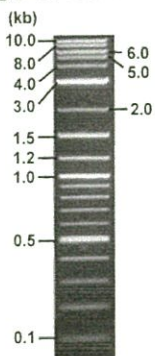
< Size of fragment expected from this clone >

DNA	1 ul
Enzyme (BamHI)	1 ul
Buffer H	1 ul
dH <sub>2</sub> O	7 ul
<b>Total</b>	<b>10 ul</b>

BamHI 3.1kb (vector), 3.3, 2.5 kb (unsure)

Electrophoresis : 1% agarose gel, 1x TAE Buffer

Marker : 2-Log DNA Ladder (NEB#N3200L)



● Confirmation of the insertion sequence

Date : 180221

Primer A	pGCAP-F
Primer B	pGCAP-R
Primer C	Poly(A) region
List of Sequencing Primers	<a href="http://dna.brc.riken.jp/en/NRCDhum2en.html">http://dna.brc.riken.jp/en/NRCDhum2en.html</a>

● Adjust plasmid DNA solution to 25 ng/ul

Date : 180228

DNA ( <u>106</u> ng/ul)	<u>82.0</u> ul
10x TE	<u>34.7</u> ul
dH <sub>2</sub> O	<u>230.9</u> ul
<b>Total</b>	<b>347.6</b> ul

● Shipping



Conc. : 25 ng/μl, Volume : 40 μl



Conc. :      ng/μl, Volume :      μl

APPROVED BY :



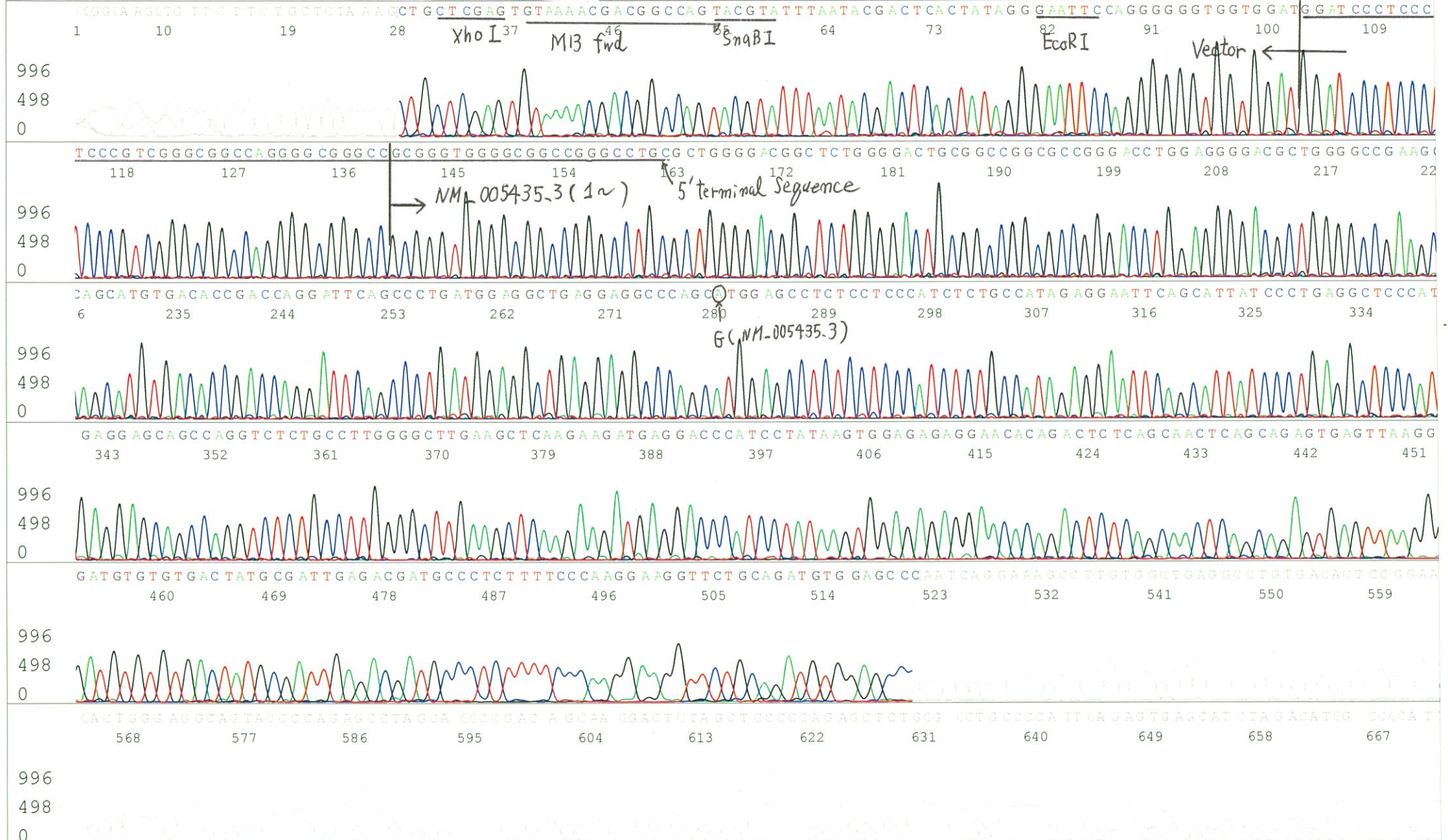
S/N G:111 A:124 T:98 C:182  
KB.bcp  
KB 1.4.1.8 Cap:16

Primer A : pGCAP-F

7672\_ARe82G06\_A8B9\_pGCAP\_F  
KB\_3500\_POP7\_BDTv3.mob  
Pts 1686 to 8455 Pk1 Loc:1654  
Version 6.0 HiSQV Bases: 645

Gray line indicates quality value  
(QV) < 40.

Feb 21,2018 06:24PM, JST  
Feb 21,2018 06:41PM, JST  
Spacing:10.2 Pts/Panel1350  
Plate Name: 20180221\_GNP





S/N G:56 A:100 T:94 C:100  
KB.bcp  
KB 1.4.1.8 Cap:22

Primer C : Poly(A) region primer #0  
5' TTTTTTTTTTTTTTTTTTTTTNNN 3'

7672\_ARe82G06\_A8B9\_GNPmixture  
KB\_3500\_POP7\_BDTv3.mob  
Pts 1698 to 8462 Pk1 Loc:1666  
Version 6.0 HiSQV Bases: 707

Gray line indicates quality value (QV) < 40.

Feb 21,2018 06:24PM, JST  
Feb 21,2018 06:41PM, JST  
pacing:10.26 Pts/Panel1350  
Plate Name: 20180221\_GNP

