

RIKEN Clone ID : ARe64E09

Vector : pKA1U5

Gene	CAPN2	
RefSeq_mRNA	NM_001748.5	3366 bp

● Plasmid DNA purification

Date : 22.06.08

Culture : LB (100 ug/ml Ampicillin) 5 ml -> at 37 deg C O/N

Date : 22.06.09

Purification : QIAGEN Miniprep kit -> dH₂O 100 ul

● Digestion by restriction enzyme/Concentration calibration

Date : 22.06.09

DNA concentration (O.D.): 396 ng/ul

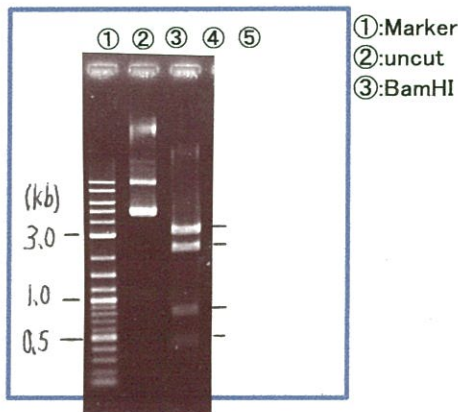
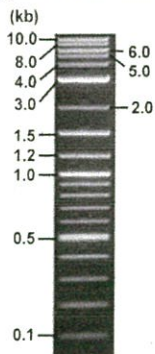
< Size of fragment expected from this clone >

DNA	0.25 ul
Enzyme (BamHI)	1 ul
Buffer H	1 ul
dH ₂ O	7.75 ul
Total	10 ul

BamHI 3.1kb (vector), 2.2, 0.7, 0.5 kb (unsure)

Erectrophoresis : 1% agarose gel, 1x TAE Buffer

Marker : 2-Log DNA Ladder (NEB#N3200L)



● Confirmation of the insertion sequence

Date : 22.06.29

Primer A	pGCAP-F
Primer B	pGCAP-R
Primer C	Poly(A) region
List of Sequencing Primers	http://dna.brc.riken.jp/en/NRCDhum2en.html

● Adjust plasmid DNA solution to 25 ng/ul

Date : 22.06.30

DNA (396 ng/ul)	80.0 ul
10x TE	126.7 ul
dH ₂ O	1060.5 ul
Total	1267.2 ul

● Shipping

Conc. : 25 ng/μl, Volume : 40 μl

Conc. : — ng/μl, Volume : — μl



APPROVED BY :

S/N G:716 A:679 T:395 C:783

7672_ARe64E09_B2F8_pGCAP_F

Jun 09,2022 02:47PM, JST

KB.bcp

KB_3500_POP7_BDTv3.mob

Jun 09,2022 03:08PM, JST

KB 1.4.1.8 Cap:11

Primer A : pGCAP-F

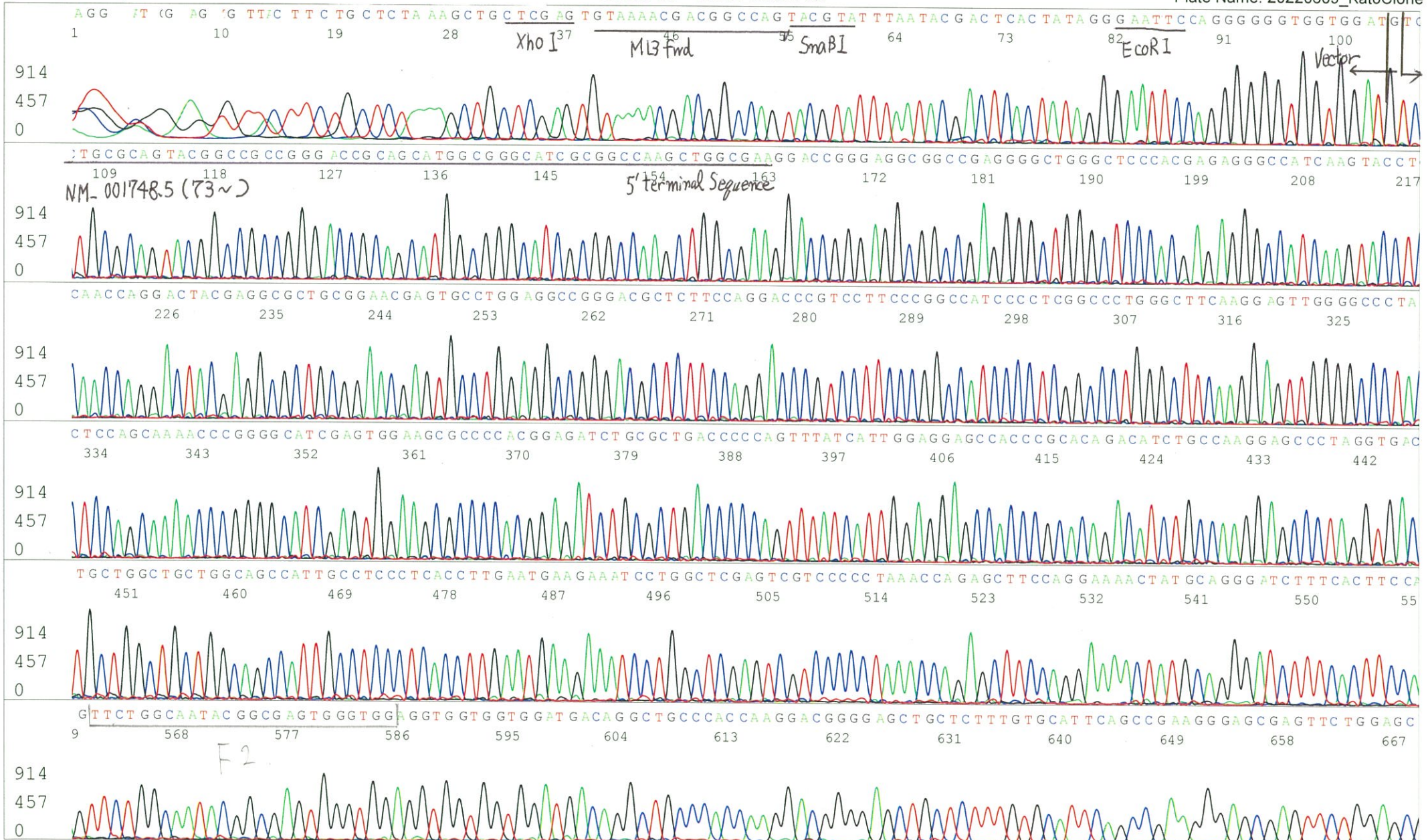
Pts 1558 to 11711 PK1 Loc:1541

Spacing:12.65 Pts/Panel1350

5' CTCAGTGGATGTTGCCTTTAC 3'

Version 6.0 HiSQV Bases: 787

Plate Name: 20220609_KatoClone



S/N G:422 A:444 T:239 C:227 Primer C : Poly(A) region primer #0
KB.bcp
KB 1.4.1.8 Cap:17 5' TTTTTTTTTTTTTTTTTTTTTT VNN 3'

