

FI

**RIKEN Clone ID : ARe62G07**

Vector : pKA1U5

Gene	FAM86D	
RefSeq_mRNA	NR_024241.1	2527 bp

● Plasmid DNA purification

Date : 20.03.30

Culture : LB (100 ug/ml Ampicillin) 5 ml -> at 37 deg C O/N

Date : 20.03.31

Purification : QIAGEN Miniprep kit -> dH<sub>2</sub>O 100 ul

● Digestion by restriction enzyme/Concentration calibration

Date : 20.03.31

DNA concentration (O.D.): 327 ng/ul

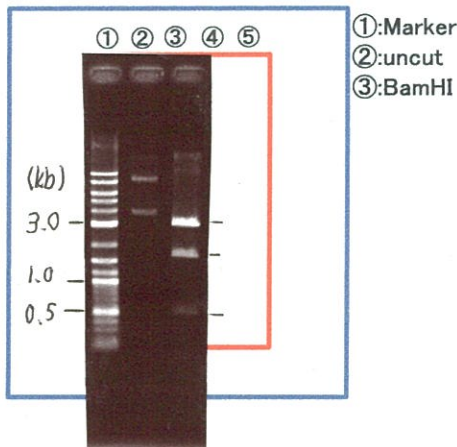
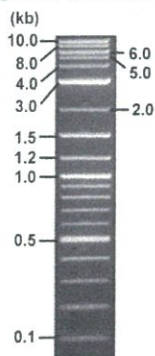
< Size of fragment expected from this clone >

DNA	<u>0.3</u> ul
Enzyme (BamHI)	1 ul
Buffer H	1 ul
dH <sub>2</sub> O	<u>7.7</u> ul
<b>Total</b>	<b>10 ul</b>

BamHI 3.1kb (vector), 1.7, 1.1 kb (unsure)

Electrophoresis : 1% agarose gel, 1x TAE Buffer

Marker : 2-Log DNA Ladder (NEB#N3200L)



● Confirmation of the insertion sequence

Date : 21.03.08

Primer A	pGCAP-F
Primer B	pGCAP-R
Primer C	Poly(A) region
List of Sequencing Primers	<a href="http://dna.brc.riken.jp/en/NRCDhum2en.html">http://dna.brc.riken.jp/en/NRCDhum2en.html</a>

● Adjust plasmid DNA solution to 25 ng/ul

Date : 21.03.30

DNA ( <u>327</u> ng/ul)	<u>86.0</u> ul
10x TE	<u>112.4</u> ul
dH <sub>2</sub> O	<u>926.4</u> ul
<b>Total</b>	<b>1124.8</b> ul

● Shipping



Conc. : 25 ng/μl, Volume : 40 μl

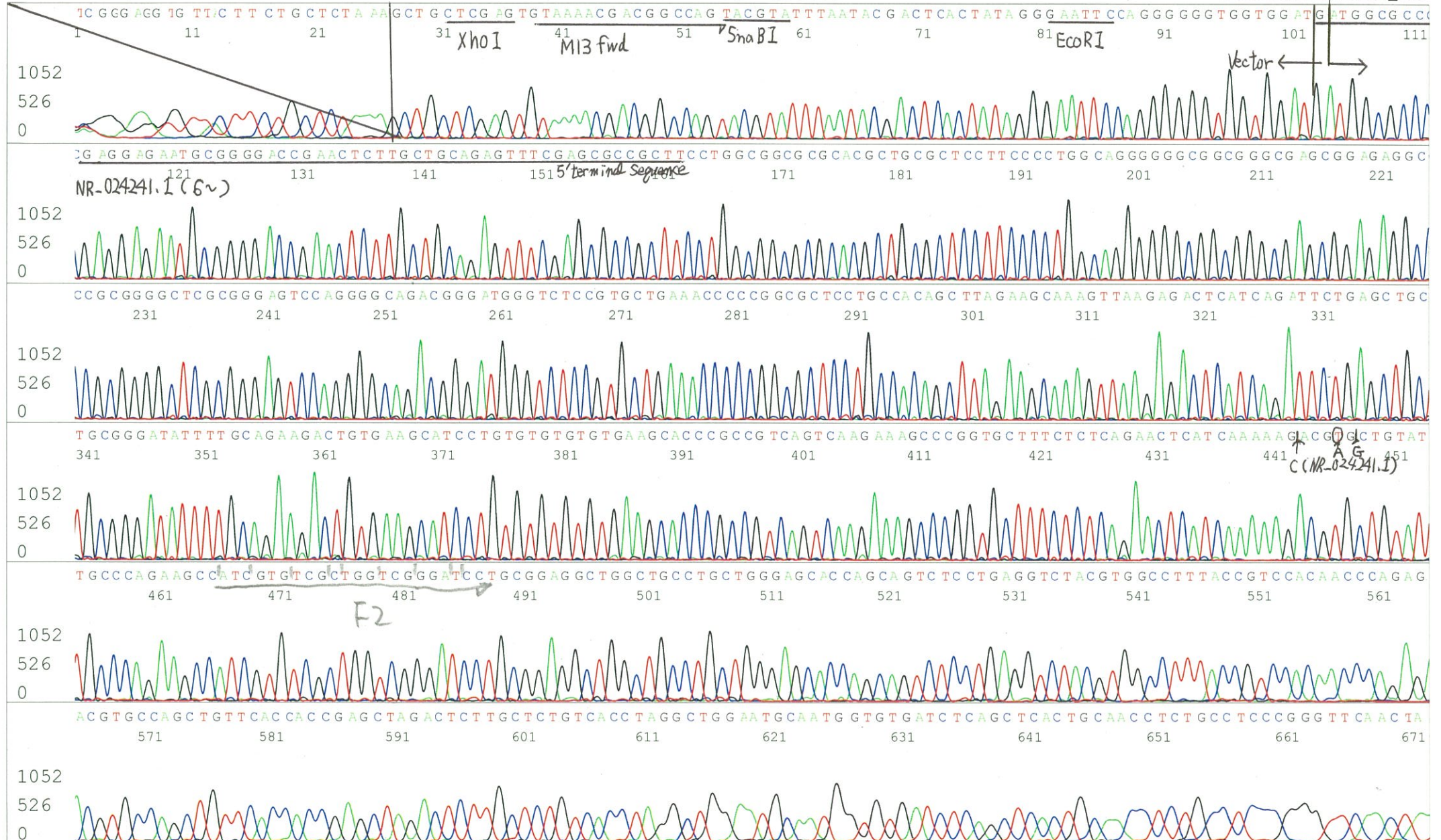


~~Conc. : \_\_\_ ng/μl, Volume : \_\_\_ μl~~

APPROVED BY :



S/N G:136 A:109 T:82 C:143 Primer A : pGCAP-F  
KB.bcp  
KB 1.4.1.8 Cap:5 5' CTCAGTGGATGTTGCCTTTAC 3'



S/N G:53 A:54 T:57 C:62  
KB.bcp  
KB 1.4.1.8 Cap:6

Primer B : pGCAP-R

5' GCATTCTAGTTGTGGTTTGTCC 3'

