

RIKEN Clone ID : ARe48F01

Vector : pKA1U5

Gene	RTN4	
RefSeq_mRNA	NM_020532.4	4871 bp
	CDS	3579 bp
		299..3877
	5' position	102

● Plasmid DNA purification

Date : 140703

Culture : LB (100 ug/ml Ampicillin) 5 ml -> at 37 deg C O/N

Date : 140704

Purification : QIAGEN Miniprep kit -> dH₂O 100 ul

● Digestion by restriction enzyme/Concentration calibration

Date : 140704

DNA concentration (O.D.): 235 ng/ul

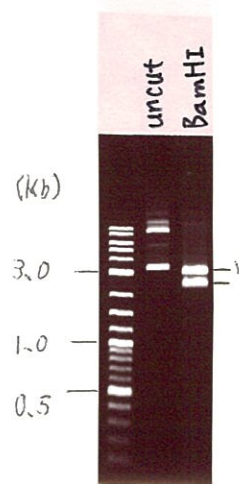
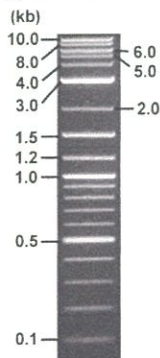
<Size of fragment expected from ARe48F01 >

DNA	0.2	ul
Enzyme (BamHI)	1	ul
Buffer H	1	ul
dH ₂ O	7.8	ul
Total	10	ul

BamHI 3183(vector), 4984 bp (unsure)

Electrophoresis : 1% agarose gel, 1x TAE Buffer

Marker : 2-Log DNA Ladder (NEB#N3200L)



● Confirmation of the insertion sequence

Date : 140715

Primer A	pGCAP-F
Primer B	pGCAP-R
Primer C	Poly(A) region
List of Sequencing Primers	http://dna.brc.riken.jp/en/NRCDhum2en.html

● Adjust plasmid DNA solution to 25 ng/ul

Date : 140715

DNA (235 ng/ul)	88.0	ul
10x TE	82.7	ul
dH ₂ O	656.5	ul
Total	827.2	ul

● Shipping



Conc. : 25 ng/μl, Volume : 40 μl

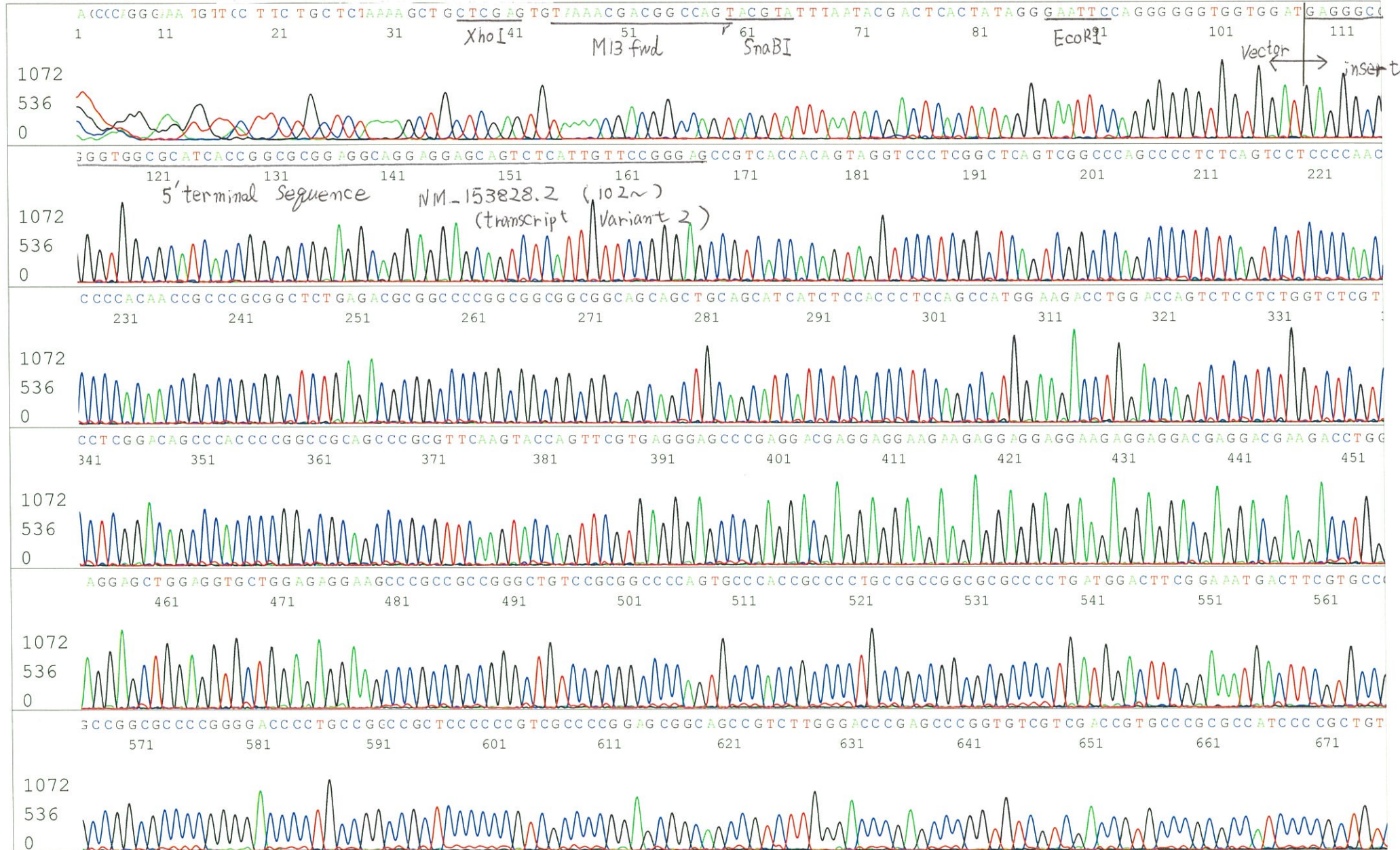
~~Conc. : _____ ng/μl, Volume : _____ μl~~

APPROVED BY :

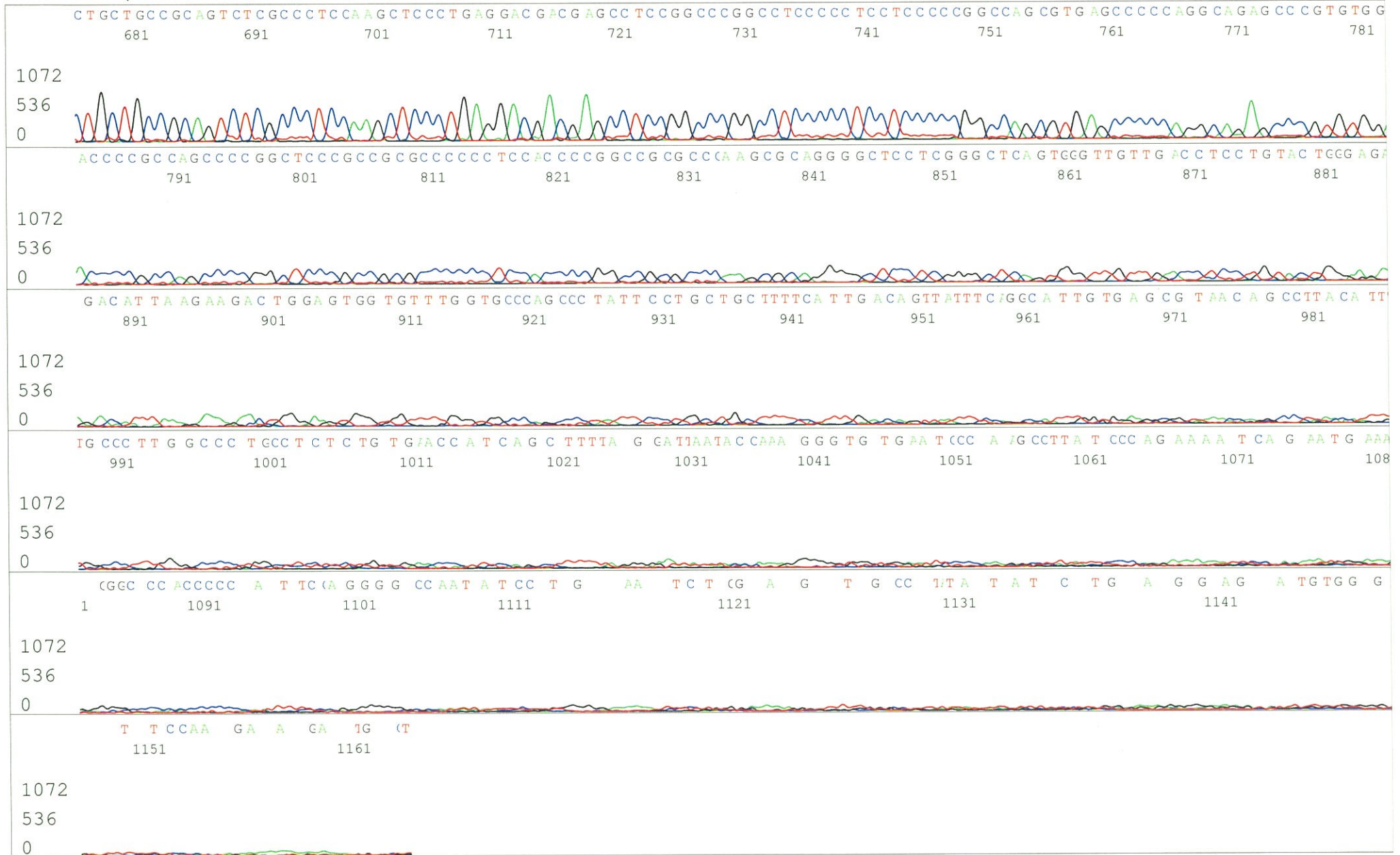


S/N G:37 A:35 T:25 C:53
KB.bcp
KB 1.4.1.8 Cap:1

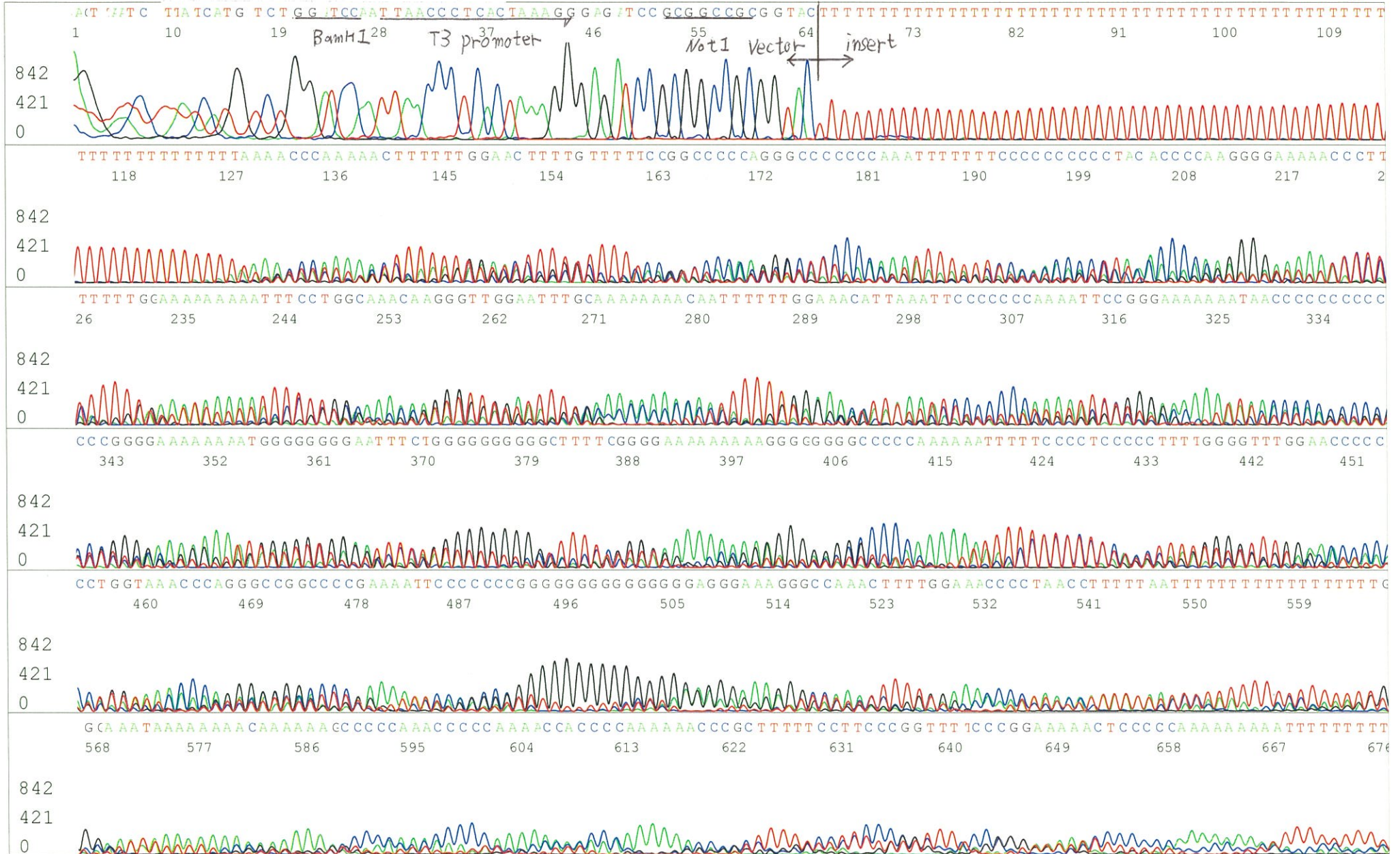
Primer A : pGCAP-F
5' CTCAGTGGATGTTGCCTTTAC 3'



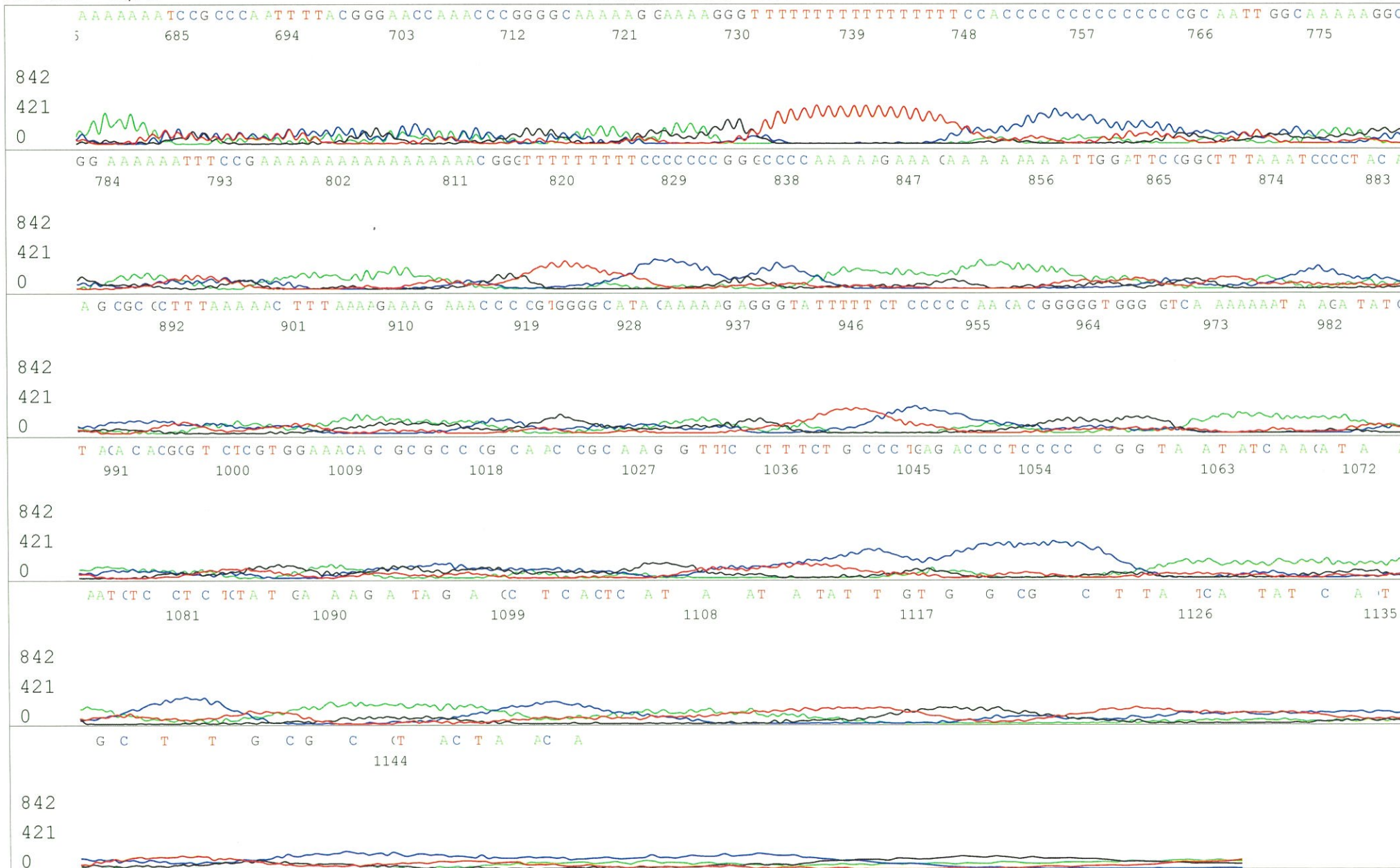
S/N G:37 A:35 T:25 C:53
KB.bcp
KB 1.4.1.8 Cap:1



S/N G:28 A:37 T:47 C Primer B : pGCAP-R
KB.bcp
KB 1.4.1.8 Cap:13 5' GCATTCTAGTTGTGGTTTGTCC 3'

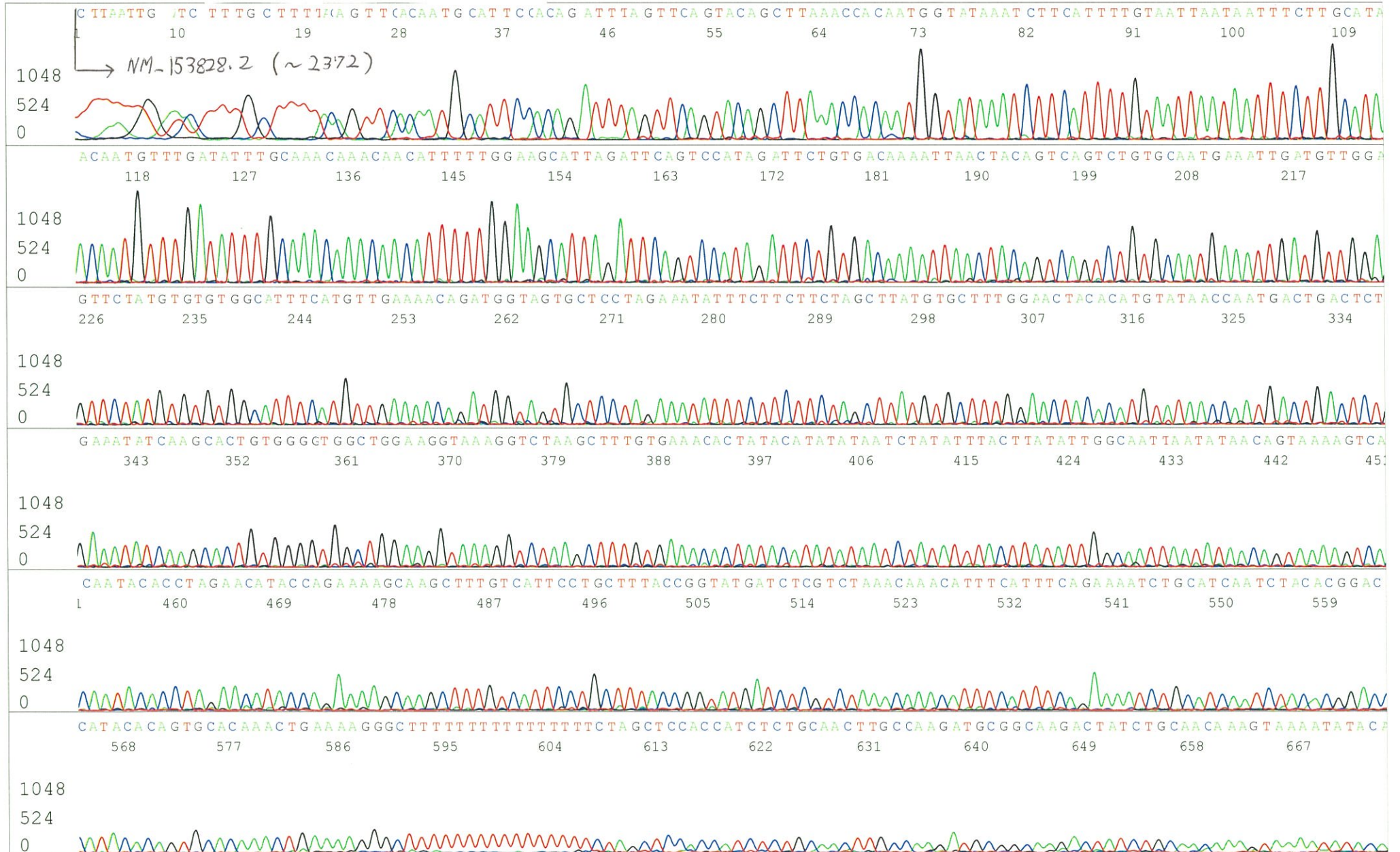


S/N G:28 A:37 T:47 C:36
KB.bcp
KB 1.4.1.8 Cap:13



S/N G:78 A:98 T:69 C:54
KB.bcp
KB 1.4.1.8 Cap:7

Primer C : Poly(A) region primer #0
5' TTTTTTTTTTTTTTTTTTTTTTNNN 3'



S/N G:78 A:98 T:69 C:54
KB.bcp
KB 1.4.1.8 Cap:7

