

RIKEN Clone ID : ARe41D02

Vector : pKA1U5

Gene	ARL4C	
RefSeq_mRNA	NM_005737.3	4024 bp

● Plasmid DNA purification

Date : 2019.12.19

Culture : LB (100 ug/ml Ampicillin) 5 ml -> at 37 deg C O/N

Date : 2019.12.23

Purification : QIAGEN Miniprep kit -> dH₂O 100 ul

● Digestion by restriction enzyme/Concentration calibration

Date : 2019.12.23

DNA concentration (O.D.): 305 ng/ul

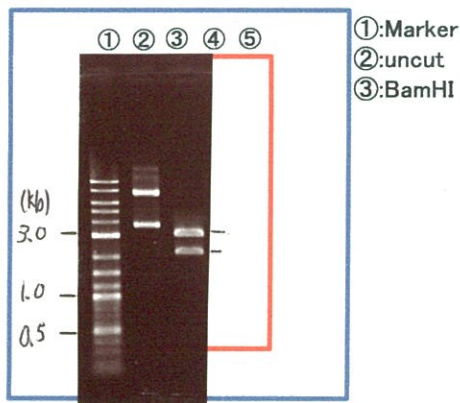
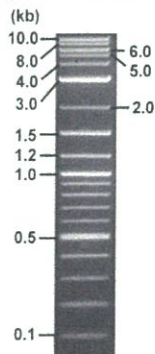
< Size of fragment expected from this clone >

DNA	0.3 ul
Enzyme (BamHI)	1 ul
Buffer H	1 ul
dH ₂ O	7.7 ul
Total	10 ul

BamHI 3.1kb (vector), 4.2 kb (unsure)

Erectrophoresis : 1% agarose gel, 1x TAE Buffer

Marker : 2-Log DNA Ladder (NEB#N3200L)



● Confirmation of the insertion sequence

Date : 2019.12.24

Primer A	pGCAP-F
Primer B	pGCAP-R
Primer C	Poly(A) region
List of Sequencing Primers	http://dna.brc.riken.jp/en/NRCDhum2e.html

● Adjust plasmid DNA solution to 25 ng/ul

Date : 21.04.01

DNA (305 ng/ul)	86.0 ul
10x TE	104.9 ul
dH ₂ O	858.3 ul
Total	1049.2 ul

● Shipping

Conc. : 25 ng/μl, Volume : 40 μl

~~Conc. : ng/μl, Volume : μl~~



APPROVED BY :

S/N G:467 A:368 T:152 C:584

Primer A : pGCAP-F

7672_ARe41D02_A9Ln_pGCAP_F

Dec 24, 2019 10:28AM, JST

KB.bcp

KB_3500_POP7_BDTv3.mob

Dec 24, 2019 10:42AM, JST

KB 1.4.1.8 Cap:1

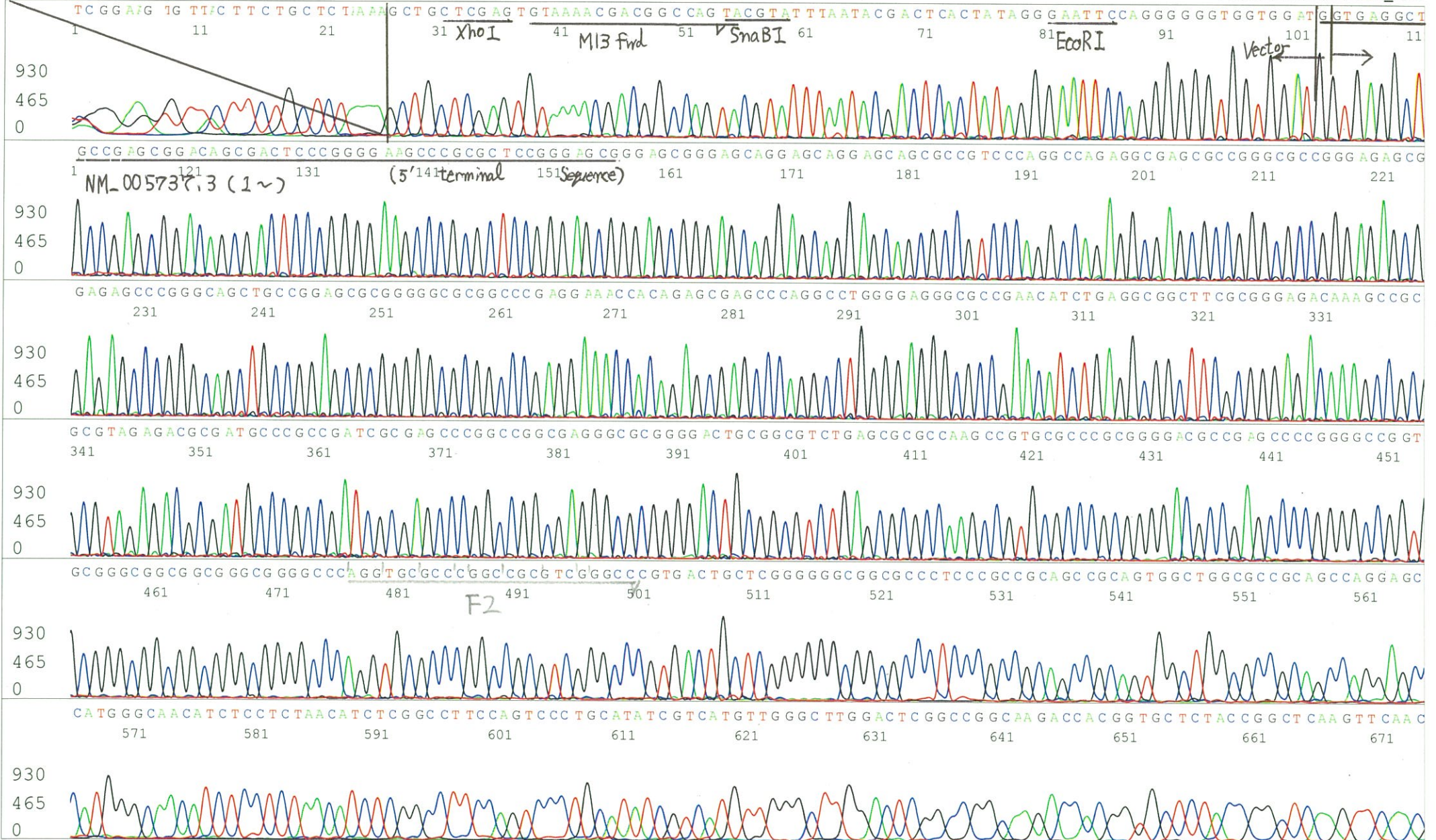
5' CTCAGTGGATGTTGCCTTTAC 3'

Pts 1755 to 8707 Pk1 Loc:1723

Spacing:10.5 Pts/Panel1350

Version 6.0 HiSQV Bases: 670

Plate Name: 20191224_GNP



S/N G:115 A:126 T:128 C:173

7672_ARe41D02_A9Ln_pGCAP_R

Dec 24, 2019 10:28AM, JST

KB.bcp

Primer B : pGCAP-R

KB_3500_POP7_BDTv3.mob

Dec 24, 2019 10:42AM, JST

KB 1.4.1.8 Cap:4

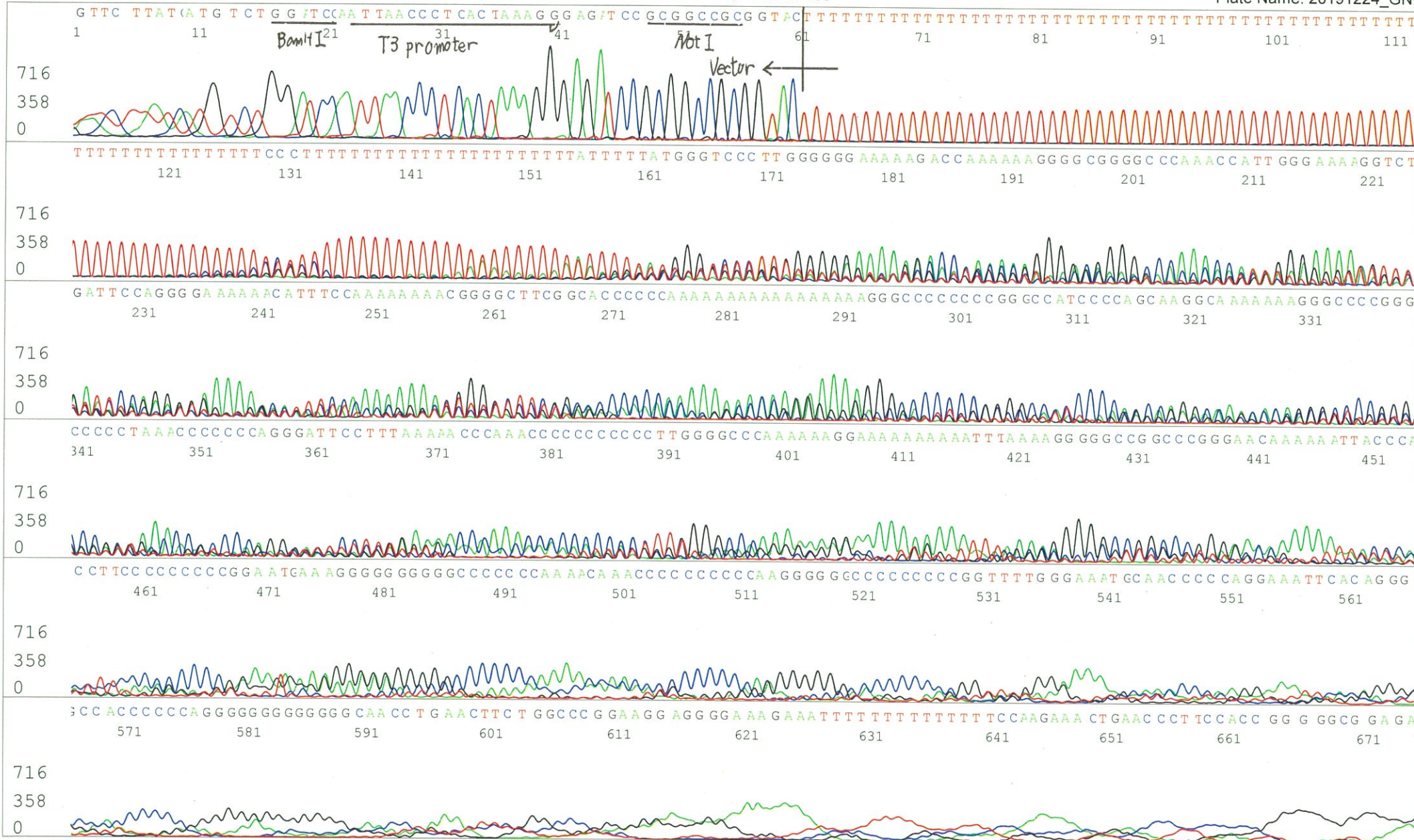
5' GCATTCTAGTTGTGGTTTGTCC 3'

Pts 1742 to 8701 Pk1 Loc:1710

Version 6.0 HiSQV Bases: 130

Spacing:10.45 Pts/Panel1350

Plate Name: 20191224_GNP



S/N G:57 A:61 T:34 C:67

Primer C : Poly(A) region primer #0

7672_ARe41D02_A9Ln_GNPmixture

Dec 24, 2019 10:28AM, JST

KB.bcp

KB_3500_POP7_BDTv3.mob

Dec 24, 2019 10:42AM, JST

KB 1.4.1.8 Cap:7

5' TTTTTTTTTTTTTTTTTTTTTTNNN 3'

Pts 1757 to 8637 Pk1 Loc:1725

Spacing:10.35 Pts/Panel1350

Version 6.0 HiSQV Bases: 665

Plate Name: 20191224_GNP

