

**RIKEN Clone ID : ARe33F06**

Vector : pKA1U5

Lot# : 7672\_A9Lp

Gene	CCL26	
RefSeq_mRNA	NM_006072.4	562 bp

● Plasmid DNA purification

Date : 191224

Culture : LB (100 ug/ml Ampicillin) 5 ml -> at 37 deg C O/N

Date : 200108

Purification : QIAGEN Miniprep kit -> dH<sub>2</sub>O 100 ul

● Digestion by restriction enzyme/Concentration calibration

Date : 200108

DNA concentration (O.D.): 261 ng/ul

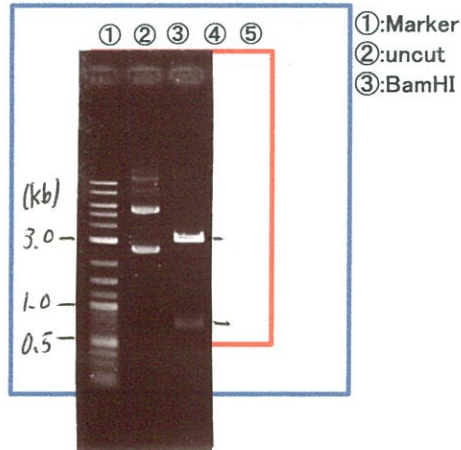
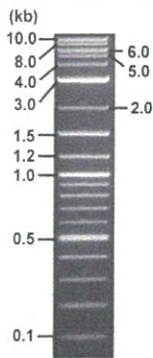
< Size of fragment expected from this clone >

DNA	<u>0.4</u> ul
Enzyme (BamHI)	1 ul
Buffer H	1 ul
dH <sub>2</sub> O	<u>7.6</u> ul
Total	10 ul

BamHI 3.1kb (vector), 0.7 kb (unsure)

Erectrophoresis : 1% agarose gel, 1x TAE Buffer

Marker : 2-Log DNA Ladder (NEB#N3200L)



● Confirmation of the insertion sequence

Date : 210428

Primer A	pGCAP-F
Primer B	pGCAP-R
Primer C	Poly(A) region
List of Sequencing Primers	<a href="http://dna.brc.riken.jp/en/NRCDhum2en.html">http://dna.brc.riken.jp/en/NRCDhum2en.html</a>

● Adjust plasmid DNA solution to 25 ng/ul

Date : 21.04.01

DNA ( <u>261</u> ng/ul)	<u>80.0</u> ul
10x TE	<u>83.5</u> ul
dH <sub>2</sub> O	<u>671.7</u> ul
Total	<u>835.2</u> ul

● Shipping

Conc. : 25 ng/μl, Volume : 40 μl

~~Conc. :     ng/μl, Volume :     μl~~



APPROVED BY :

S/N G:553 A:556 T:364 C:536  
KB.bcp  
KB 1.4.1.8 Cap:4

Primer A : pGCAP-F  
5' CTCAGTGGATGTTGCCTTTAC 3'

