

RIKEN Clone ID : ARe17H05

Vector : pKA1U5

Gene	FGF2	
RefSeq_mRNA	NM_002006.6	6801 bp

● Plasmid DNA purification

Date : 22.03.28

Culture : LB (100 ug/ml Ampicillin) 5 ml -> at 37 deg C O/N

Date : 22.03.29

Purification : QIAGEN Miniprep kit -> dH₂O 100 ul

● Digestion by restriction enzyme/Concentration calibration

Date : 22.03.29

DNA concentration (O.D.): 264 ng/ul

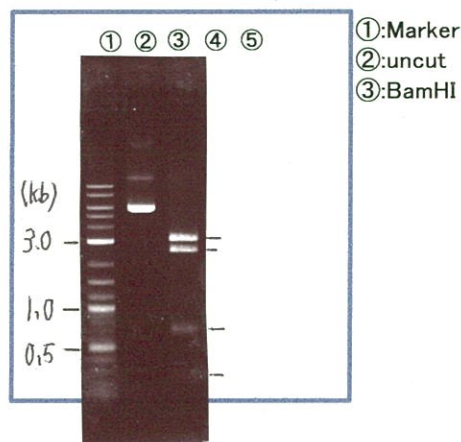
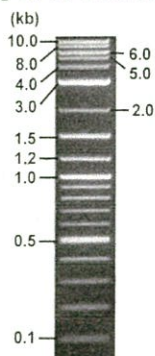
< Size of fragment expected from this clone >

DNA	<u>0.4</u> ul
Enzyme (BamHI)	1 ul
Buffer H	1 ul
dH ₂ O	<u>7.6</u> ul
Total	10 ul

BamHI 3.1kb (vector), 3.4, 2.6, 0.4, 0.3, 0.2 kb (unsure)

Electrophoresis : 1% agarose gel, 1x TAE Buffer

Marker : 2-Log DNA Ladder (NEB#N3200L)



● Confirmation of the insertion sequence

Date : 22.05.30

Primer A	pGCAP-F
Primer B	pGCAP-R
Primer C	Poly(A) region
List of Sequencing Primers	http://dna.brc.riken.jp/en/NRCDCHum2en.html

● Adjust plasmid DNA solution to 25 ng/ul

Date : 22.06.08

DNA (<u>264</u> ng/ul)	<u>72.0</u> ul
10x TE	<u>76.0</u> ul
dH ₂ O	<u>612.3</u> ul
Total	<u>760.3</u> ul

● Shipping

Conc. : 25 ng/μl, Volume : 40 μl

Conc. : ng/μl, Volume : μl

APPROVED BY :



S/N G:381 A:252 T:128 C:439

Primer A : pGCAP-F

7672_ARe17H05_B2Cs_pGCAP_F

Mar 30,2022 09:44AM, JST

KB.bcp

KB_3500_POP7_BDTv3.mob

Mar 30,2022 09:59AM, JST

KB 1.4.1.8 Cap:19

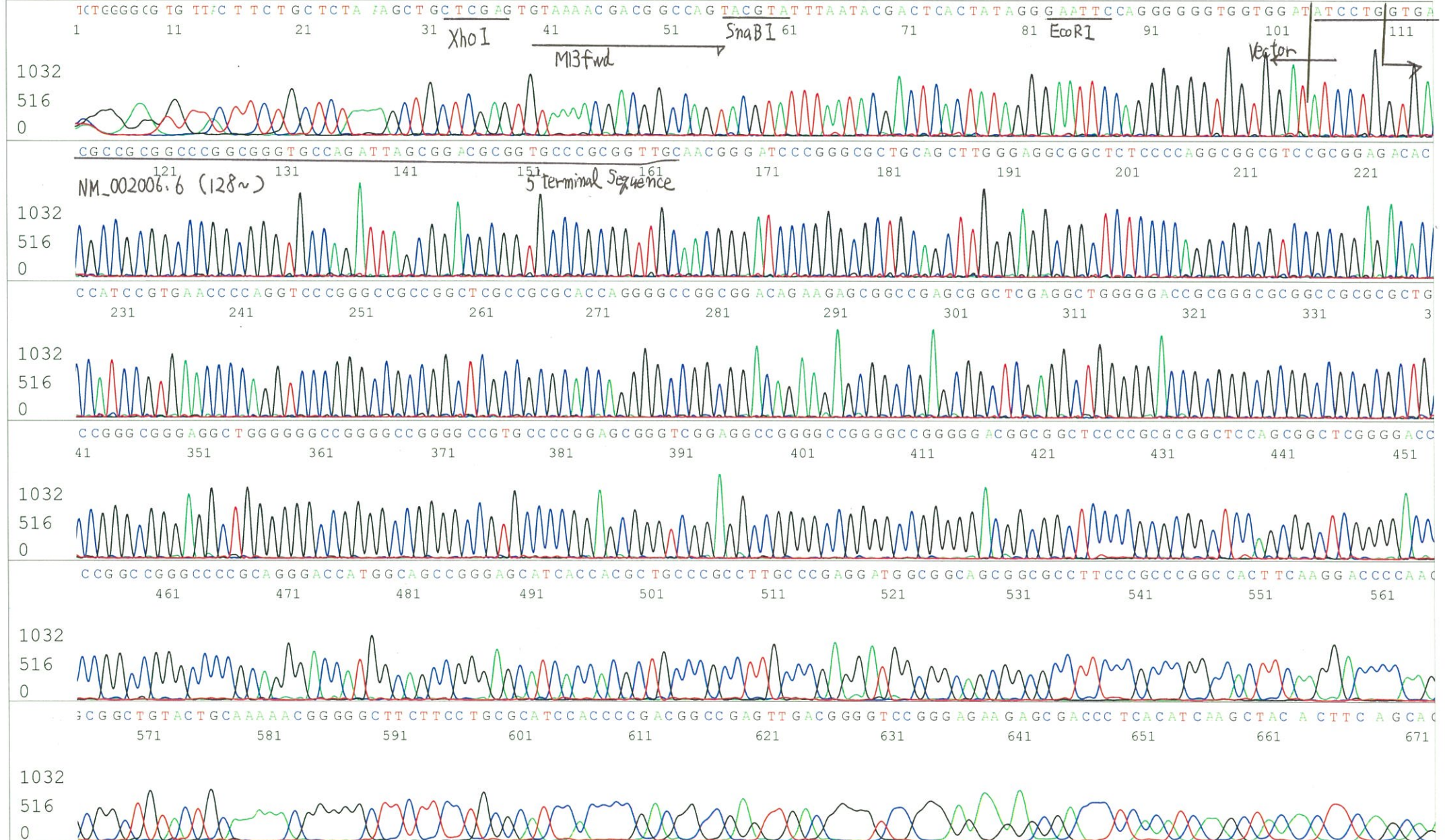
5' CTCAGTGGATGTTGCCTTTAC 3'

Pts 1734 to 8708 Pk1 Loc:1702

Spacing:10.93 Pts/Panel1350

Version 6.0 HiSQV Bases: 616

Plate Name: 20220330_KatoClone



S/N G:60 A:134 T:111 C:93
KB.bcp
KB 1.4.1.8 Cap:22

Primer B : pGCAP-R

5' GCATTCTAGTTGTGGTTTGTCC 3'



S/N G:255 A:525 T:246 C:24 Primer C : Poly(A) region primer #0

7672_ARe17H05_B2Cs_GNP Mixture

Mar 30,2022 09:44AM, JST

KB.bcp

KB_3500_POP7_BDTv3.mob

Mar 30,2022 09:59AM, JST

KB 1.4.1.8 Cap:2 5' TTTTTTTTTTTTTTTTTTTTTT VNN 3'

Pts 1731 to 8708 Pk1 Loc:1699

Spacing:10.94 Pts/Panel1350

Version 6.0 HiSQV Bases: 602

Plate Name: 20220330_KatoClone

