

RIKEN Clone ID : ARe16D01

Vector : pKA1U5

Gene	CD44	
RefSeq_mRNA	NM_000610.3	5748 bp
	<i>CDS</i>	2229 bp
5' position		302

● Plasmid DNA purification

Date : 170711

Culture : LB (100 ug/ml Ampicillin) 5 ml → at 37 deg C O/N

Date : 170712

Purification : QIAGEN Miniprep kit → dH₂O 100 ul

● Digestion by restriction enzyme/Concentration calibration

Date : 170712

DNA concentration (O.D.): 119 ng/ul

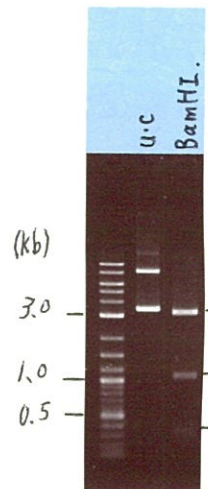
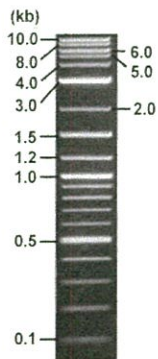
< Size of fragment expected from this clone >

DNA	0.7 ul
Enzyme (BamHI)	1 ul
Buffer H	1 ul
dH ₂ O	7.3 ul
Total	10 ul

BamHI 3.1kb (vector), 5.1, 0.3, 0.3 kb (unsure)

Electrophoresis : 1% agarose gel, 1x TAE Buffer

Marker : 2-Log DNA Ladder (NEB#N3200L)



● Confirmation of the insertion sequence

Date : 170713

Primer A	pGCAP-F
Primer B	pGCAP-R
Primer C	Poly(A) region
List of Sequencing Primers	http://dna.brc.riken.jp/en/NRCDhum2e.html

● Adjust plasmid DNA solution to 25 ng/ul

Date : 170719

DNA (<u>119</u> ng/ul)	85.0 ul
10x TE	40.4 ul
dH ₂ O	279.2 ul
Total	404.6 ul

● Shipping



Conc. : 25 ng/μl, Volume : 40 μl



~~Conc. : ng/μl, Volume : μl~~



APPROVED BY :

S/N G:701 A:756 T:642 C:1169

Primer A : pGCAP-F

7672_ARe16D01_A7Ga_pGCAP_F

KB_3500_POP7_BDTV3.mob

Gray line indicates quality value

Jul 13,2017 03:19PM, JST

Jul 13,2017 03:33PM, JST

KB.bcp

Pts 1718 to 8646 Pk1 Loc:1686

(QV) < 40.

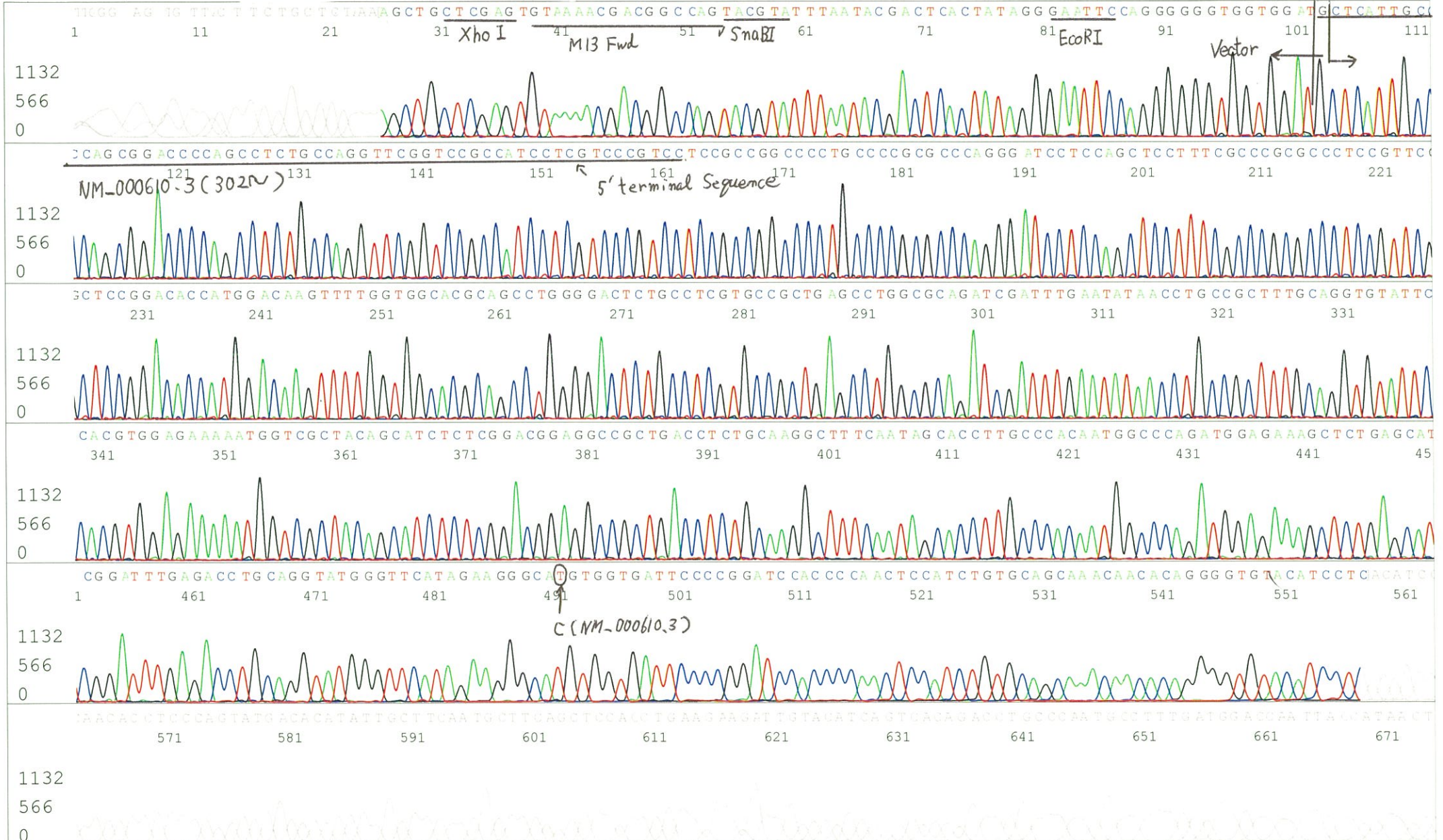
Spacing:10.55 Pts/Panel1350

KB 1.4.1.8 Cap:18

5' CTCAGTGGATGTTGCCTTTAC 3'

Version 6.0 HiSQV Bases: 695

Plate Name: 20170713_GNP



S/N G:24 A:19 T:18 C:24

Primer C : Poly(A) region primer #0

7672_ARe16D01_A7Ga_GNPmixture

Jul 13,2017 03:19PM, JST

KB.bcp

KB_3500_POP7_BDTv3.mob

Jul 13,2017 03:33PM, JST

KB 1.4.1.8 Cap:24

5' TTTTTTTTTTTTTTTTTTTNNN 3'

Pts 1712 to 8706 Pk1 Loc:1680

Gray line indicates quality value

Spacing:10.68 Pts/Panel1350

Version 6.0 HiSQV Bases: 700

(QV) < 40.

Plate Name: 20170713_GNP

