

**RIKEN Clone ID : ARe06D02**

Vector : pKA1U5

Gene	RBM45	
RefSeq_mRNA	NM_152945.4	1803 bp

● Plasmid DNA purification

Date : 22.03.28

Culture : LB (100 ug/ml Ampicillin) 5 ml -> at 37 deg C O/N

Date : 22.03.29

Purification : QIAGEN Miniprep kit -> dH<sub>2</sub>O 100 ul

● Digestion by restriction enzyme/Concentration calibration

Date : 22.03.29

DNA concentration (O.D.): 290 ng/ul

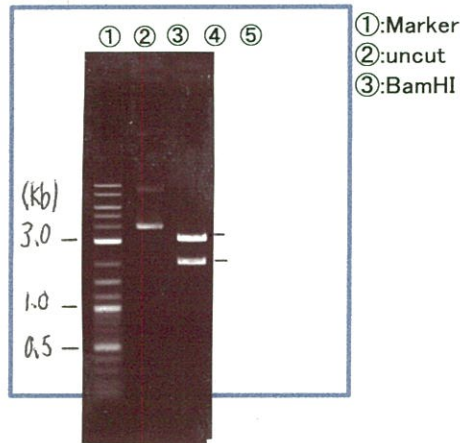
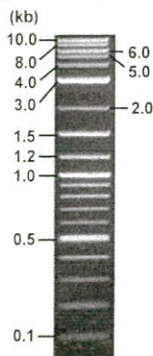
< Size of fragment expected from this clone >

DNA	<u>0.3</u> ul
Enzyme (BamHI)	1 ul
Buffer H	1 ul
dH <sub>2</sub> O	<u>7.7</u> ul
<b>Total</b>	<b>10 ul</b>

BamHI 3.1kb (vector), 2.0 kb (unsure)

Electrophoresis : 1% agarose gel, 1x TAE Buffer

Marker : 2-Log DNA Ladder (NEB#N3200L)



● Confirmation of the insertion sequence

Date : 22.05.17

● Adjust plasmid DNA solution to 25 ng/ul

Date : 22.05.26

Primer A	pGCAP-F
Primer B	pGCAP-R
Primer C	Poly(A) region
List of Sequencing Primers	<a href="http://dna.brc.riken.jp/en/NRCDhum2en.html">http://dna.brc.riken.jp/en/NRCDhum2en.html</a>

DNA ( <u>290</u> ng/ul)	<u>76.0</u> ul
10x TE	<u>88.1</u> ul
dH <sub>2</sub> O	<u>77.5</u> ul
<b>Total</b>	<b>881.6 ul</b>

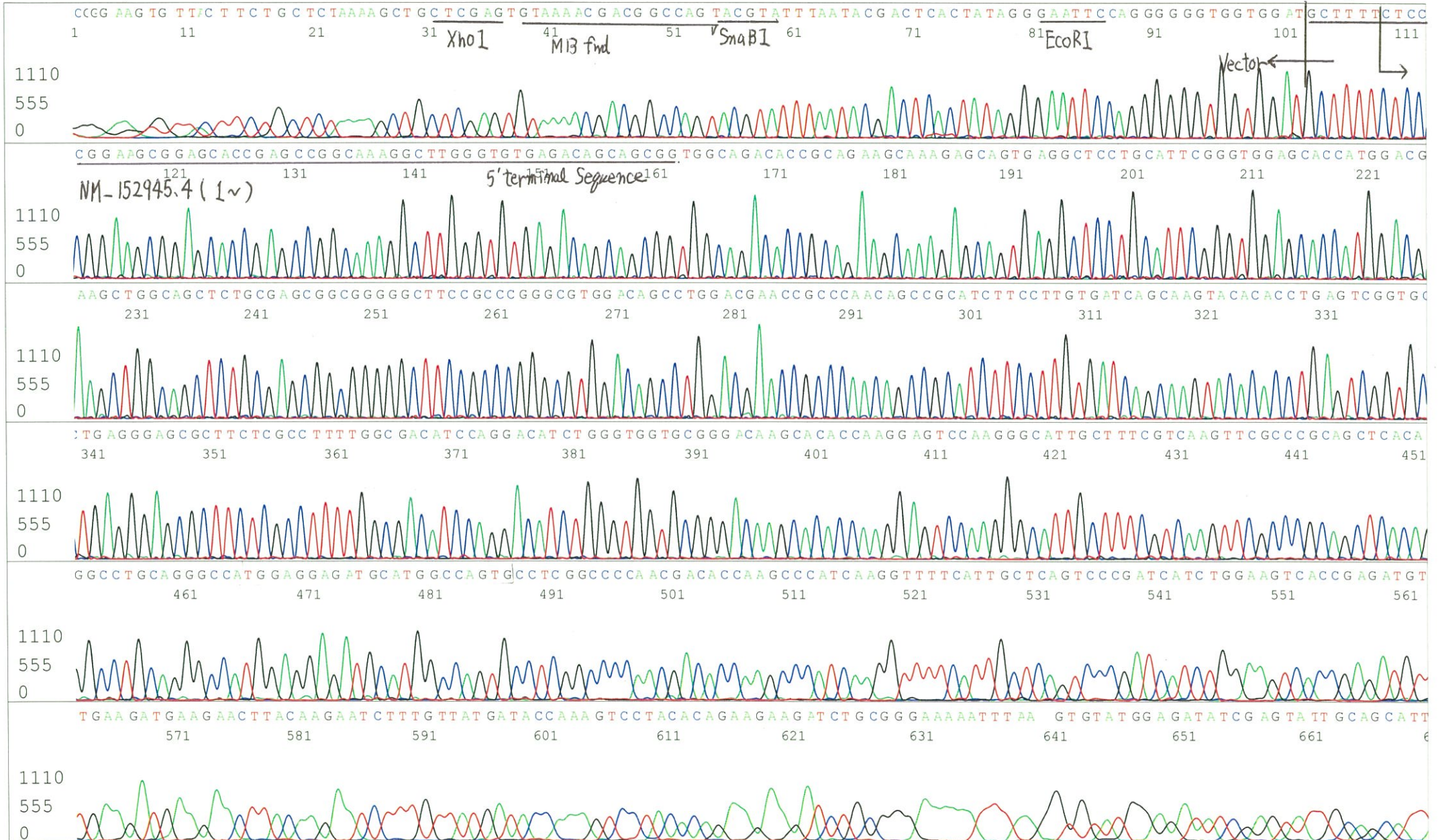
● Shipping

Conc. : 25 ng/μl, Volume : 40 μl

Conc. :      ng/μl, Volume :      μl

APPROVED BY :





S/N G:121 A:163 T:155 C:160 Primer B : pGCAP-R  
KB.bcp  
KB 1.4.1.8 Cap:4

5' GCATTCTAGTTGTGGTTTGTCC 3'

