

**RIKEN Clone ID : H3113A06**

Lot# : 5723\_B1Lf

Vector : pSPORT1

|                 |            |        |
|-----------------|------------|--------|
| Gene            | Gja1       |        |
| 5' EST Sequence | H3113A06-5 | 321 bp |
| 3' EST Sequence | H3113A06-3 | 558 bp |

● Plasmid DNA purification

Date : 21.12.15

Culture : LB (100 ug/ml Ampicillin) 5 ml -> 37°C O/N

Date : 21.12.16

Purification : QIAGEN Miniprep kit -> dH<sub>2</sub>O 100 ul

● Digestion by restriction enzyme/Concentration calibration

Date : 21.12.16

DNA concentration (O.D.): 247 ng/ul

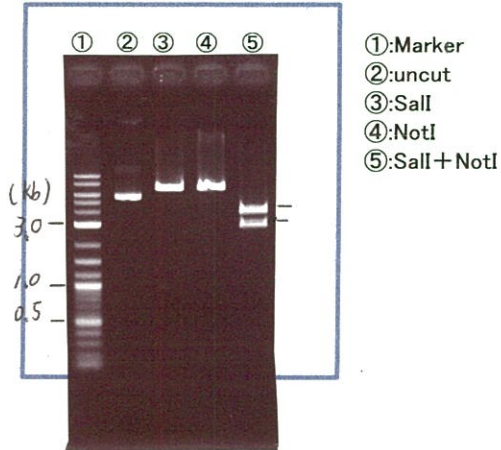
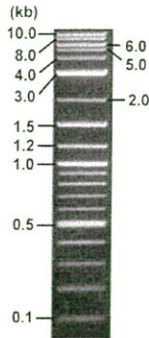
< Size of fragment expected from this clone >

|                      |                     |
|----------------------|---------------------|
| DNA                  | <u>0.4</u> ul       |
| Enzyme (Sall + NotI) | <u>0.5 + 0.5</u> ul |
| Buffer H             | <u>1</u> ul         |
| dH <sub>2</sub> O    | <u>7.6</u> ul       |
| Total                | <u>10</u> ul        |

|             |                |                   |
|-------------|----------------|-------------------|
| Sall        |                | size unidentified |
| NotI        |                | size unidentified |
| Sall + NotI | <u>4.0 kb,</u> | size unidentified |

Electrophoresis : 1% agarose gel, 1x TAE Buffer

Marker : 2-Log DNA Ladder (NEB#N3200L)



● Adjust plasmid DNA solution to 25 ng/ul

Date : 21.12.21

|                         |              |    |
|-------------------------|--------------|----|
| DNA ( <u>247</u> ng/ul) | <u>84.0</u>  | ul |
| 10x TE                  | <u>82.9</u>  | ul |
| dH <sub>2</sub> O       | <u>663.0</u> | ul |
| Total                   | <u>829.9</u> | ul |

● Shipping

Conc. : 25 ng/μl, Volume : 40 μl

Conc. : ng/μl, Volume : μl

APPROVED BY :



S/N G:19 A:23 T:16 C:22

5723\_H3113A06\_B1Lf\_Reverse2

Dec 16,2021 03:08PM, JST

KB.bcp

Primer A : Reverse2

KB\_3500\_POP7\_BDTv3.mob

Gray line indicates quality value

Dec 16,2021 03:23PM, JST

KB 1.4.1.8 Cap:3

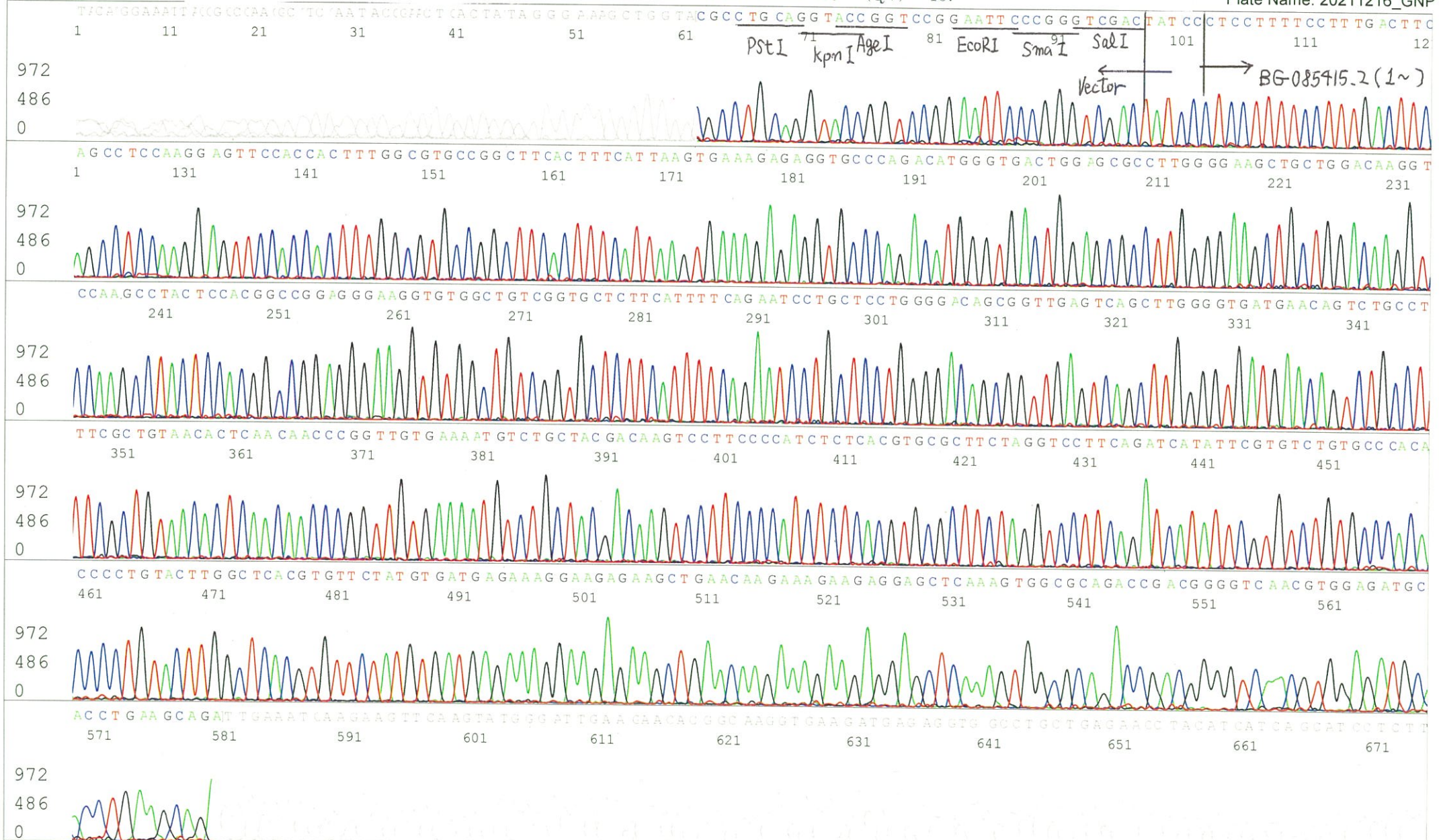
5' GCGGATAACAATTTACACACAGG 3'

Pts 1664 to 8589 Pk1 Loc:1632

Version 6.0 HiSQV Bases: 666 (QV) < 40.

Spacing:10.49 Pts/Panel1350

Plate Name: 20211216\_GNP



S/N G:23 A:48 T:26 C:33  
KB.bcp  
KB 1.4.1.8 Cap:4

Primer B : M13

5' GTTTTCCAGTCACGACGTTGTA 3'

5723\_H3113A06\_B1Lf\_M13(-40)\_D01\_04\_ABI08  
5723\_H3113A06\_B1Lf\_M13(-40)  
KB\_3500\_POP7\_BDTv3.mob  
Pts 1674 to 8639 Pk1 Loc:1642  
Version 6.0 HiSQV Bases: 661

Inst Model/Name 3500/3500 Instrument  
Dec 16, 2021 03:08PM, JST  
Dec 16, 2021 03:23PM, JST  
Spacing: 10.45 Pts/Panel1350  
Plate Name: 20211216\_GNP

Gray line indicates quality value

(QV) < 40.

