

**RIKEN Clone ID : H3095D08**

Lot# : 5723\_A6II

Vector : pSPORT1

Gene	Fadd	
5' EST Sequence	H3095D08-5	-
3' EST Sequence	H3095D08-3	447 bp

● Plasmid DNA purification

Date : 160926

Culture : LB (100 ug/ml Ampicillin) 5 ml -> 37°C O/N

Date : 160927

Purification : QIAGEN Miniprep kit -> dH<sub>2</sub>O 100 ul

● Digestion by restriction enzyme/Concentration calibration

Date : 160927

DNA concentration (O.D.): 199 ng/ul

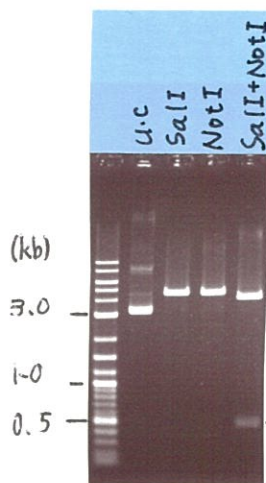
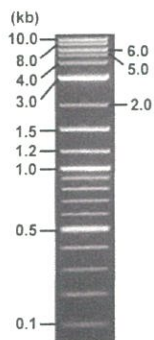
DNA	0.4	ul
Enzyme (SalI + NotI)	0.5 + 0.5	ul
Buffer H	1	ul
dH <sub>2</sub> O	7.6	ul
<b>Total</b>	<b>10</b>	<b>ul</b>

< Size of fragment expected from this clone >

SalI		size unidentified
NotI		size unidentified
SalI + NotI	4.0 kb	size unidentified

Electrophoresis : 1% agarose gel, 1x TAE Buffer

Marker : 2-Log DNA Ladder (NEB#N3200L)



● Adjust plasmid DNA solution to 25 ng/ul

Date : 161003

DNA ( <u>199</u> ng/ul)	83.0	ul
10x TE	86.1	ul
dH <sub>2</sub> O	511.6	ul
<b>Total</b>	<b>660.7</b>	<b>ul</b>

● Shipping

Conc. : 25 ng/ul, Volume : 40 ul  
~~Conc. : ng/ul, Volume : ul~~



APPROVED BY :

S/N G:248 A:231 T:290 C:322

Primer A : Reverse2

5723\_H3095D08\_A6II\_Reverse2

Sep 29,2016 04:41PM, JST

KB.bcp

KB\_3500\_POP7\_BDTv3.mob

Sep 29,2016 05:07PM, JST

KB 1.4.1.8 Cap:21

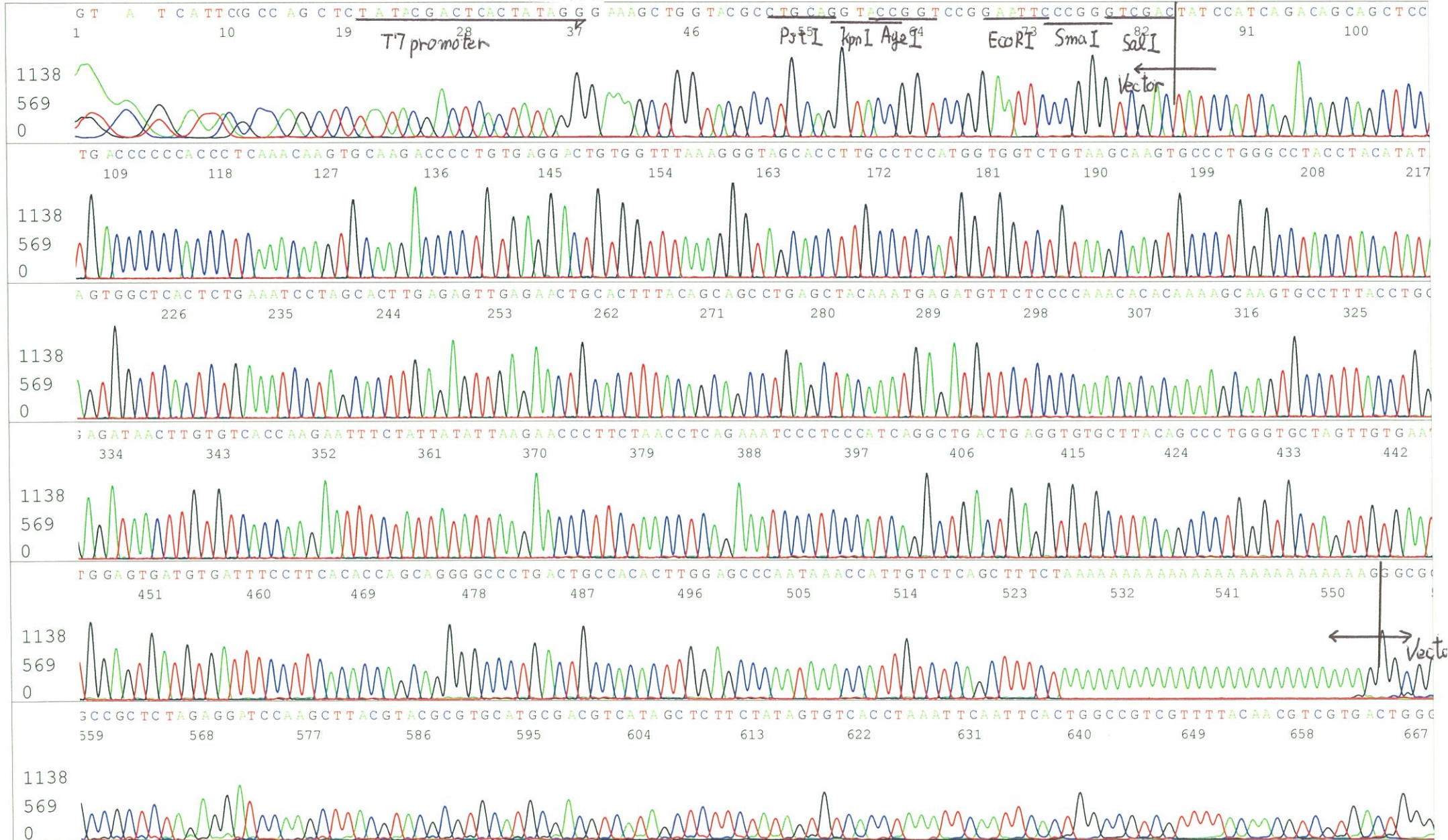
5' GCGGATAACAATTTTCACACAGG 3'

Pts 1496 to 12692 Pk1 Loc:1473

Spacing:11.16 Pts/Panel1350

Version 6.0 HiSQV Bases: 938

Plate Name: 20160929\_GNP





S/N G:248 A:231 T:290 C:322

5723\_H3095D08\_A6II\_Reverse2

Sep 29,2016 04:41PM, JST

KB.bcp

KB\_3500\_POP7\_BDTv3.mob

Sep 29,2016 05:07PM, JST

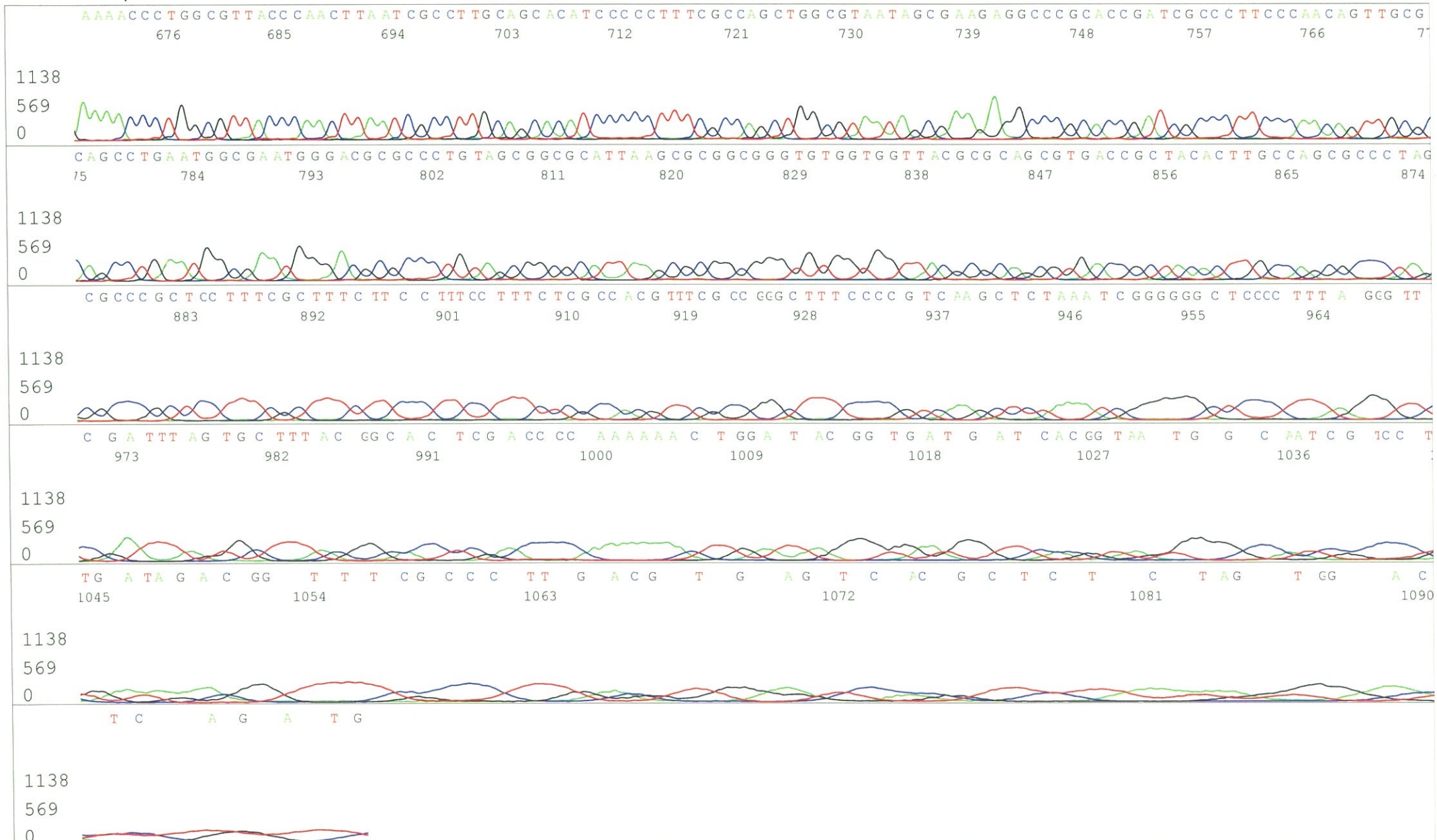
KB 1.4.1.8 Cap:21

Pts 1496 to 12692 Pk1 Loc:1473

Spacing:11.16 Pts/Panel1350

Version 6.0 HiSQV Bases: 938

Plate Name: 20160929\_GNP



S/N G:314 A:263 T:326 C:331 Primer B : M13

5723\_H3095D08\_A6II\_M13(-40)

Sep 29,2016 04:41PM, JST

KB.bcp

KB\_3500\_POP7\_BDTv3.mob

Sep 29,2016 05:07PM, JST

KB 1.4.1.8 Cap:24

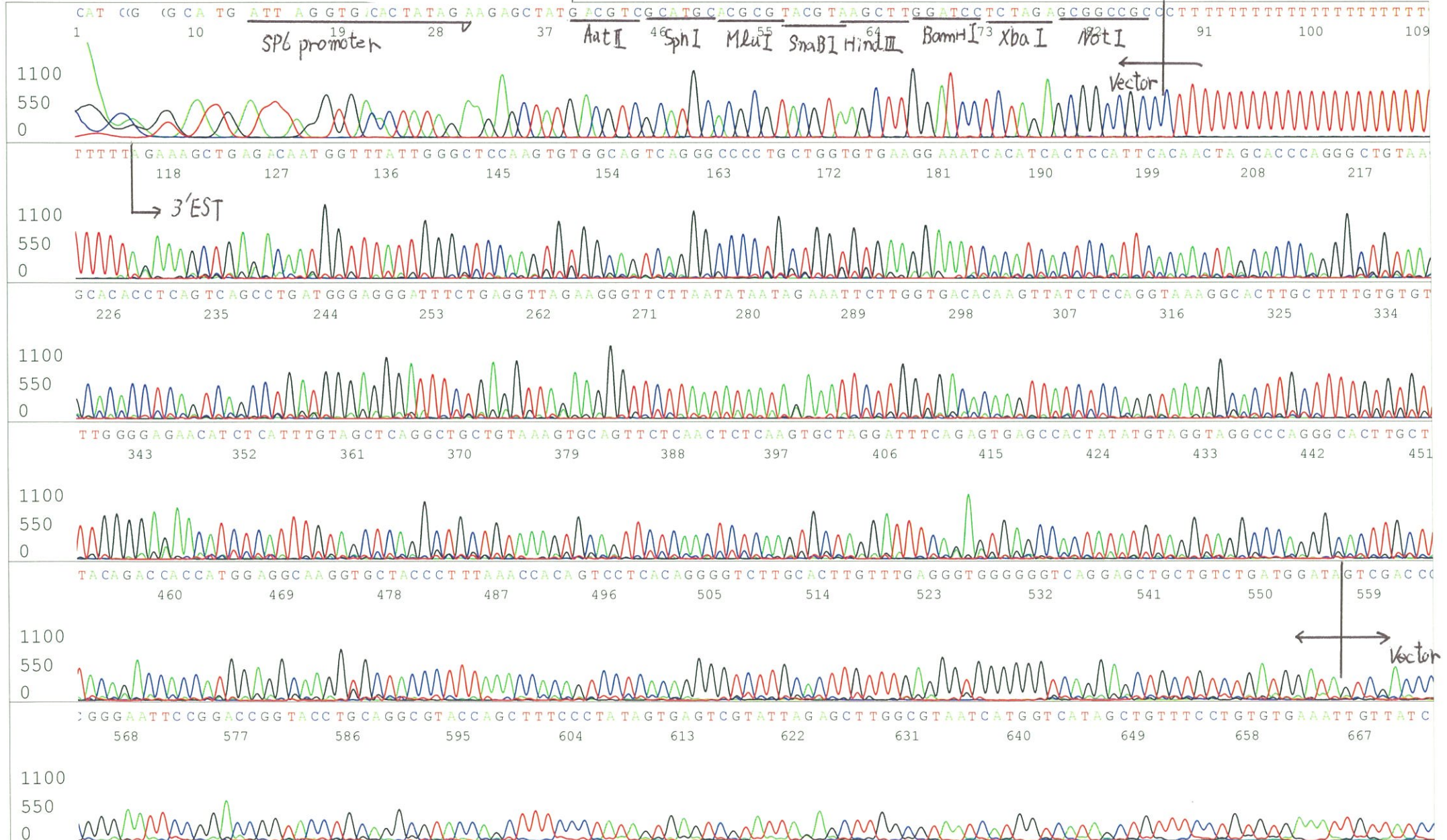
5' GTTTTCCCAGTCACGACGTTGTA 3'

Pts 1527 to 12596 PK1 Loc:1504

Spacing:11.21 Pts/Panel1350

Version 6.0 HiSQV Bases: 938

Plate Name: 20160929\_GNP





S/N G:314 A:263 T:326 C:331

5723\_H3095D08\_A6II\_M13(-40)

Sep 29,2016 04:41PM, JST

KB.bcp

KB\_3500\_POP7\_BDTv3.mob

Sep 29,2016 05:07PM, JST

KB 1.4.1.8 Cap:24

Pts 1527 to 12596 Pk1 Loc:1504

Spacing:11.21 Pts/Panel1350

Version 6.0 HiSQV Bases: 938

Plate Name: 20160929\_GNP

