

# Microbial Genomic DNA

RIKEN DNA Bank catalog #

JGD : **20521**Lot # : **20521\_B5A1**

Strain : **JCM 13384<sup>T</sup>**  
 Organism : ***Palaeococcus helgesonii***

## 1. Shipping

Volume : **20** uL

## 2. Concentration of Genomic DNA

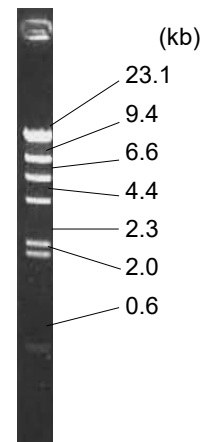
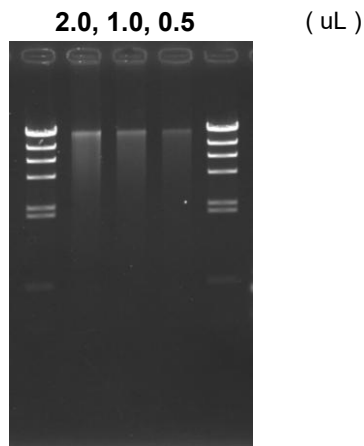
Concentration ( OD 260 ) : **42** ng/uL  
 A260 / A280 : **1.86**

## 3. Electrophoresis of Genomic DNA

Electrophoresis : 1% agarose gel, 1x TAE buffer  
 Loading DNA amount : **2.0, 1.0, 0.5** uL/lane  
 size marker : Lambda / HindIII ( 200 ng/Lane )

Date : **2025/10/15**

Marker ( Lambda / HindIII, NEB#3012S )



## 4. PCR Amplification

Conditions of PCR Ribosomal RNA ( rRNA ) gene

Templete : 100 fold diluted DNA, 1 uL  
 Enzyme : KOD plus ( TOYOBO )  
 Volume : 20 uL

Reaction program : 94 degC 2 min  
 x 30 cycle  $\left[ \begin{array}{l} 94 \text{ degC } 15 \text{ sec} \\ 60 \text{ degC } 30 \text{ sec} \\ 68 \text{ degC } 60 \text{ sec} \end{array} \right]$   
 68 degC 2 min

Date : **2025/10/15**

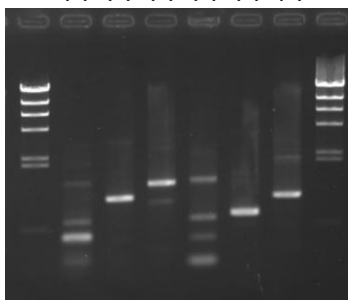
PCR primers for rRNA gene

A-20F	5'- TCCGGTTGATCCTGCCG -3'
A-340F	5'- CCCAGGCCCTACGGG -3'
A-520R	5'- GTATTACCGCGGCGGCTG -3'
A-1100R	5'- CGGGTCTCGCTCGTT -3'
A-1400R	5'- GACGGCGGTGTGTGC -3'

Reference: Please visit online-manual site below.

[http://dna.brc.riken.jp/en/manualen/manual\\_genom\\_dna](http://dna.brc.riken.jp/en/manualen/manual_genom_dna)

(1) (2) (3) (4) (5) (6)



Sample Number

	A-20F	A-340F
A-520R	(1)	(4)
A-1100R	(2)	(5)
A-1400R	(3)	(6)

Electrophoresis : 1% agarose gel, 1x TAE buffer  
 Loading DNA amount : 3 uL PCR product/Lane  
 Size marker : Lambda / HindIII ( 200ng/Lane )

## 5. Nucleotide sequence of rRNA gene

■ Confirmed Date : **2025/10/16**