

# Microbial Genomic DNA

Strain : **JCM 9062**  
Organism : ***Thermoplasma acidophilum***

RIKEN DNA Bank catalog #  
JGD : **07523**  
Lot # : **16065\_A8li**

## 1. Shipping

Volume : **40 uL**

## 2. Concentration of Genomic DNA

Concentration ( OD 260 ) : **147** ng/uL  
A260 / A280 : **1.97**

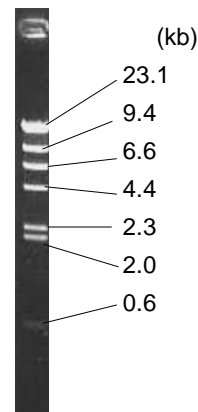
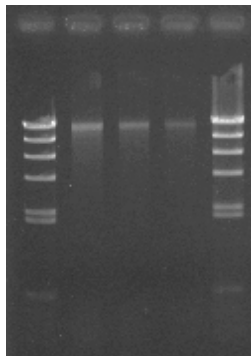
## 3. Electrophoresis of Genomic DNA

Electrophoresis : 1% agarose gel, 1x TAE buffer  
Loading DNA amount : **2.0, 1.0, 0.5** uL/lane  
size marker : Lambda / HindIII ( 200 ng/Lane )

Date : **2018/10/30**

Marker ( Lambda / HindIII, NEB#3012S )

**2.0, 1.0, 0.5** ( uL )



## 4. PCR Amplification

Conditions of PCR Ribosomal RNA ( rRNA ) gene  
Template : 100 fold diluted DNA, 1 uL  
Enzyme : KOD plus ( TOYOBO )  
Volume : 20 uL

Reaction program :  
x 30 cycle

94 degC	2 min
94 degC	15 sec
60 degC	30 sec
68 degC	60 sec
68 degC	2 min

Date : **2018/10/30**

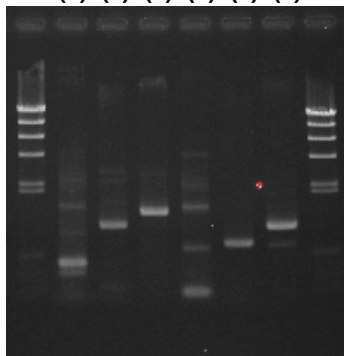
### PCR primers for rRNA gene

A-20F	5'- TCCGGTTGATCCTGCCG -3'
A-340F	5'- CCCAGGCCCTACGGG -3'
A-520R	5'- GTATTACCGCGGCGGCTG -3'
A-1100R	5'- CGGGTCTCGCTCGTT -3'
A-1400R	5'- GACGGGCGGTGTGTGC -3'

Reference: Please visit online-manual site below.

[http://dna.brc.riken.jp/en/manualen/manual\\_genom\\_dna](http://dna.brc.riken.jp/en/manualen/manual_genom_dna)

(1) (2) (3) (4) (5) (6)



### Sample Number

	A-20F	A-340F
A-520R	(1)	(4)
A-1100R	(2)	(5)
A-1400R	(3)	(6)

Electrophoresis : 1% agarose gel, 1x TAE buffer  
Loading DNA amount : 3 uL PCR product/Lane  
Size marker : Lambda / HindIII ( 200ng/Lane )

## 5. Nucleotide sequence of rRNA gene

Confirmed Date : **2018/10/31**