

# Microbial Genomic DNA

RIKEN DNA Bank catalog #

JGD : **12977**Lot # : **15189\_B1Je**

Strain : **JCM 6325<sup>T</sup>**  
 Organism : ***Prevotella melaninogenica***

## 1. Shipping

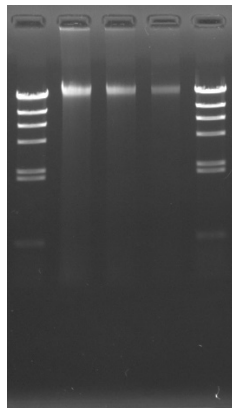
Volume : **20** uL

## 2. Concentration of Genomic DNA

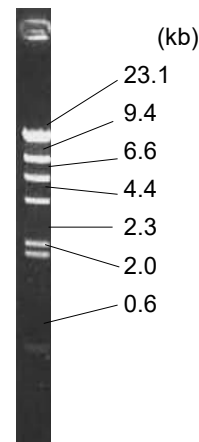
Concentration ( OD 260 ) : **100** ng/uL  
 A260 / A280 : **1.91**

## 3. Electrophoresis of Genomic DNA

Electrophoresis : 1% agarose gel, 1x TAE buffer  
 Loading DNA amount : **2.0, 1.0, 0.5** uL/lane  
 size marker : Lambda / HindIII ( 200 ng/Lane )  
**2.0, 1.0, 0.5** ( uL )

Date : **2021/10/18**

Marker ( Lambda / HindIII, NEB#3012S )



## 4. PCR Amplification

Conditions of PCR Ribosomal RNA ( rRNA ) gene  
 Template : 100 fold diluted DNA, 1 uL  
 Enzyme : KOD plus ( TOYOBO )  
 Volume : 20 uL

Reaction program :  
 x 30 cycle

|         |        |
|---------|--------|
| 94 degC | 2 min  |
| 94 degC | 15 sec |
| 60 degC | 30 sec |
| 68 degC | 60 sec |
| 68 degC | 2 min  |

Date : **2021/10/18**

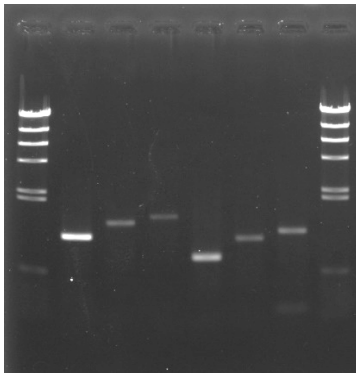
### PCR primers for rRNA gene

|          |                           |
|----------|---------------------------|
| EB-20F   | 5'- AGTTTGATCCTGGCTC -3'  |
| EB-350F  | 5'- TACGGGAGGCAGCAG -3'   |
| EB-1100R | 5'- AGGGTTGCGCTCGTTG -3'  |
| EB-1400R | 5'- ACGGGCGGTGTGTAC -3'   |
| EB-1530R | 5'- AAGGAGGTGATCCAGCC -3' |

Reference: Please visit online-manual site below.

[http://dna.brc.riken.jp/en/manualen/manual\\_genom\\_dna](http://dna.brc.riken.jp/en/manualen/manual_genom_dna)

(1) (2) (3) (4) (5) (6)



### Sample Number

|          | EB-20F | EB-350F |
|----------|--------|---------|
| EB-1100R | (1)    | (4)     |
| EB-1400R | (2)    | (5)     |
| EB-1530R | (3)    | (6)     |

Electrophoresis : 1% agarose gel, 1x TAE buffer  
 Loading DNA amount : 3 uL PCR product/Lane  
 Size marker : Lambda / HindIII ( 200ng/Lane )

## 5. Nucleotide sequence of rRNA gene

■ Confirmed Date : **2017/7/19**(as original lot stock)