

# Microbial Genomic DNA

Strain : **JCM 17463<sup>T</sup>**  
 Organism : ***Agathobacter rectalis***

RIKEN DNA Bank catalog #  
**JGD : 15188**  
**Lot # : 15188\_A7Fk**

## 1. Shipping

Volume : **50** uL

## 2. Concentration of Genomic DNA

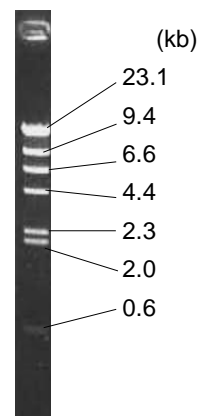
Concentration ( OD 260 ) : **237** ng/uL  
 A260 / A280 : **1.96**

## 3. Electrophoresis of Genomic DNA

Electrophoresis : 1% agarose gel, 1x TAE buffer  
 Loading DNA amount : **2,1,0.5** uL/lane  
 size marker : Lambda / HindIII ( 200 ng/Lane )

Date : **2017/7/18**

Marker ( Lambda / HindIII, NEB#3012S )

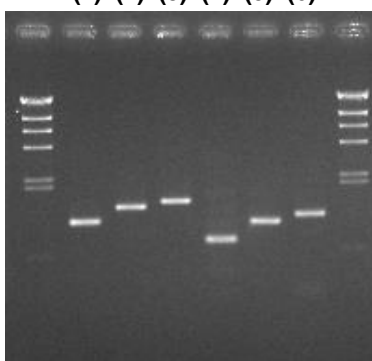


## 4. PCR Amplification

Conditions of PCR Ribosomal RNA ( rRNA ) gene  
 Template : 100 fold diluted DNA, 1 uL  
 Enzyme : KOD plus ( TOYOBO )  
 Volume : 20 uL

Reaction program :  
 94 degC 2 min  
 x 30 cycle [ 94 degC 15 sec  
 60 degC 30 sec  
 68 degC 60 sec ]  
 68 degC 2 min

**(1) (2) (3) (4) (5) (6)**



Date : **2017/7/18**

### PCR primers for 16S rRNA

EB-20F	5'- AGTTTGATCCTGGCTC -3'
EB-350F	5'- TACGGGAGGCAGCAG -3'
EB-1100R	5'- AGGGTTGCGCTCGTTG -3'
EB-1400R	5'- ACGGGCGGTGTGTAC -3'
EB-1530R	5'- AAGGAGGTGATCCAGCC -3'

### Sample Number

	EB-20F	EB-350F
EB-1100R	<b>(1)</b>	<b>(4)</b>
EB-1400R	<b>(2)</b>	<b>(5)</b>
EB-1530R	<b>(3)</b>	<b>(6)</b>

Electrophoresis : 1% agarose gel, 1x TAE buffer  
 Loading DNA amount : 3 uL PCR product/Lane  
 Size marker : Lambda / HindIII ( 200ng/Lane )

## 5. Nucleotide sequence of rRNA gene

Confirmed Date : **2017/7/19**