

# Microbial Genomic DNA

RIKEN DNA Bank catalog #

JGD : **07455**Lot # : **14641\_A8Eu**Strain : **JCM 6387<sup>T</sup>**Organism : ***Mycobacterium fortuitum subsp. fortuitum***

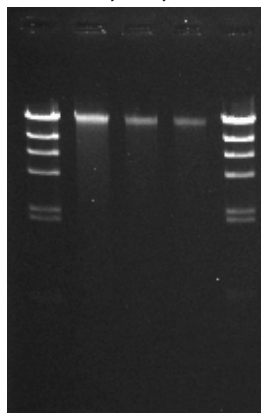
## 1. Shipping

Volume : **30** uL

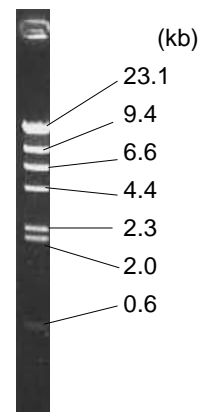
## 2. Concentration of Genomic DNA

Concentration ( OD 260 ) : **86** ng/uL  
A260 / A280 : **1.81**

## 3. Electrophoresis of Genomic DNA

Electrophoresis : 1% agarose gel, 1x TAE buffer  
Loading DNA amount : **2.0, 1.0, 0.5** uL/lane  
size marker : Lambda / HindIII ( 200 ng/Lane )  
**2.0, 1.0, 0.5** ( uL )Date : **2018/6/1**

Marker ( Lambda / HindIII, NEB#3012S )

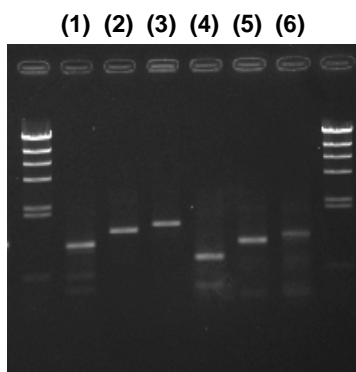


## 4. PCR Amplification

Conditions of PCR Ribosomal RNA ( rRNA ) gene

Template : 100 fold diluted DNA, 1 uL  
Enzyme : KOD plus ( TOYOBO )  
Volume : 20 uLReaction program :  
x 30 cycle 

94 degC	2 min
94 degC	15 sec
60 degC	30 sec
68 degC	60 sec
68 degC	2 min

Date : **2018/6/1**

PCR primers for rRNA gene

EB-20F	5'- AGTTTGATCCTGGCTC -3'
EB-350F	5'- TACGGGAGGCAGCAG -3'
EB-1100R	5'- AGGGTTGCGCTCGTTG -3'
EB-1400R	5'- ACGGGCGGTGTGTAC -3'
EB-1530R	5'- AAGGAGGTGATCCAGCC -3'

Reference: Please visit online-manual site below.

[http://dna.brc.riken.jp/en/manualen/manual\\_genom\\_dna](http://dna.brc.riken.jp/en/manualen/manual_genom_dna)

Sample Number

	EB-20F	EB-350F
EB-1100R	(1)	(4)
EB-1400R	(2)	(5)
EB-1530R	(3)	(6)

Electrophoresis : 1% agarose gel, 1x TAE buffer  
Loading DNA amount : 3 uL PCR product/Lane  
Size marker : Lambda / HindIII ( 200ng/Lane )

## 5. Nucleotide sequence of rRNA gene

■ Confirmed Date : **2017/3/29**(as original lot stock)