

Microbial Genomic DNA

RIKEN DNA Bank catalog #

JGD : **07470**Strain : **JCM 12997^T**Lot # : **14576_B018**Organism : ***Streptococcus oralis subsp. oralis***

1. Shipping

Volume : **40** uL

2. Concentration of Genomic DNA

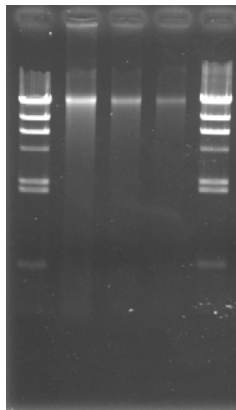
Concentration (OD 260) : **147** ng/uLA260 / A280 : **1.90**

3. Electrophoresis of Genomic DNA

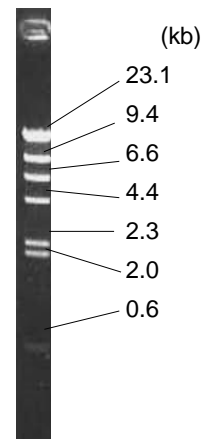
Electrophoresis : 1% agarose gel, 1x TAE buffer

Loading DNA amount : **2.0, 1.0, 0.5** uL/lane

size marker : Lambda / HindIII (200 ng/Lane)

2.0, 1.0, 0.5 (uL)Date : **2020/9/16**

Marker (Lambda / HindIII, NEB#3012S)



4. PCR Amplification

Conditions of PCR Ribosomal RNA (rRNA) gene

Template : 100 fold diluted DNA, 1 uL

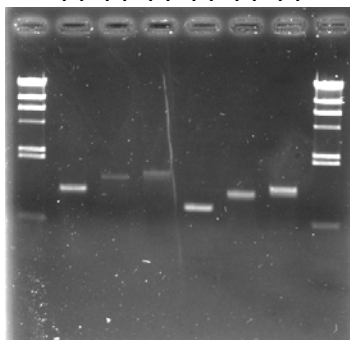
Enzyme : KOD plus (TOYOBO)

Volume : 20 uL

Reaction program :

x 30 cycle	94 degC	2 min
	94 degC	15 sec
	60 degC	30 sec
	68 degC	60 sec
	68 degC	2 min

(1) (2) (3) (4) (5) (6)

Date : **2020/9/16**

PCR primers for rRNA gene

EB-20F	5'- AGTTTGATCCTGGCTC -3'
EB-350F	5'- TACGGGAGGCAGCAG -3'
EB-1100R	5'- AGGTTGCGCTCGTTG -3'
EB-1400R	5'- ACGGGCGGTGTGTAC -3'
EB-1530R	5'- AAGGAGGTGATCCAGCC -3'

Reference: Please visit online-manual site below.

http://dna.brc.riken.jp/en/manualen/manual_genom_dna

Sample Number

	EB-20F	EB-350F
EB-1100R	(1)	(4)
EB-1400R	(2)	(5)
EB-1530R	(3)	(6)

Electrophoresis : 1% agarose gel, 1x TAE buffer

Loading DNA amount : 3 uL PCR product/Lane

Size marker : Lambda / HindIII (200ng/Lane)

5. Nucleotide sequence of rRNA gene

Confirmed Date : **2017/2/21**(as original lot stock)<http://dna.brc.riken.jp>