

# Microbial Genomic DNA

RIKEN DNA Bank catalog #

Strain : **JCM 9995**  
 Organism : ***Chaetomella raphigera***

JGD : **13816**Lot # : **13816\_B4Kc**

## 1. Shipping

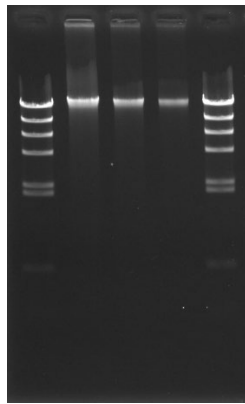
Volume : **20** uL

## 2. Concentration of Genomic DNA

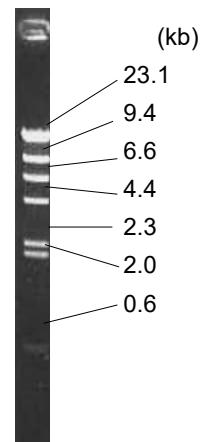
Concentration ( OD 260 ) : **105** ng/uL  
 A260 / A280 : **1.88**

## 3. Electrophoresis of Genomic DNA

Electrophoresis : 1% agarose gel, 1x TAE buffer  
 Loading DNA amount : **2.0, 1.0, 0.5** uL/lane  
 size marker : Lambda / HindIII ( 200 ng/Lane )  
**2.0, 1.0, 0.5** ( uL )

Date : **2024/12/6**

Marker ( Lambda / HindIII, NEB#3012S )

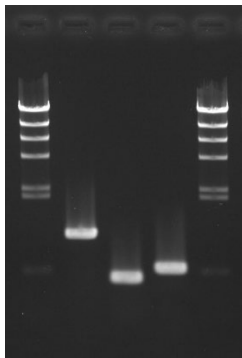


## 4. PCR Amplification

Conditions of PCR Ribosomal RNA ( rRNA ) gene  
 Template : 100 fold diluted DNA, 1 uL  
 Enzyme : KOD plus ( TOYOBO )  
 Volume : 20 uL

Reaction program :  
 94 degC 2 min  
 x 30 cycle [ 94 degC 15 sec  
 60 degC 30 sec  
 68 degC 60 sec ]  
 68 degC 2 min

(1) (2) (3)

Date : **2024/12/6**

### PCR primers for rRNA gene

ITS5	5'- GGAAGTAAAAGTCGTAACAAGG -3'
ITS4	5'- TCCTCCGCTTATTGATATGC -3'
NL1	5'- GCATATCAATAAGCGGAGGAAAAG -3'
NL4	5'- GGTCCTGTTTCAAGACGG -3'
-	-

Reference: Please visit online-manual site below.

[http://dna.brc.riken.jp/en/manualen/manual\\_genom\\_dna](http://dna.brc.riken.jp/en/manualen/manual_genom_dna)

### Sample Number

	ITS5	NL1
NL4	(1)	(3)
ITS4	(2)	-
-	-	-

Electrophoresis : 1% agarose gel, 1x TAE buffer  
 Loading DNA amount : 3 uL PCR product/Lane  
 Size marker : Lambda / HindIII ( 200ng/Lane )

## 5. Nucleotide sequence of rRNA gene

Confirmed Date : **2024/12/10**