

# Microbial Genomic DNA

Strain : **JCM 4620<sup>T</sup>**  
 Organism : ***Streptomyces antibioticus***

RIKEN DNA Bank catalog #

JGD : **12719**Lot # : **12719\_B0Cc**

## 1. Shipping

Volume : **25** uL

## 2. Concentration of Genomic DNA

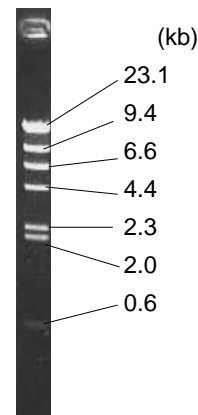
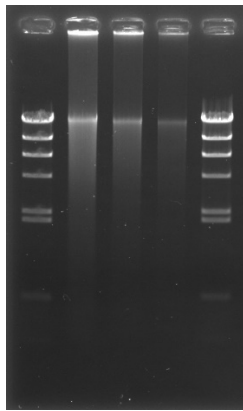
Concentration ( OD 260 ) : **134** ng/uL  
 A260 / A280 : **1.90**

## 3. Electrophoresis of Genomic DNA

Electrophoresis : 1% agarose gel, 1x TAE buffer  
 Loading DNA amount : **2.0, 1.0, 0.5** uL/lane  
 size marker : Lambda / HindIII ( 200 ng/Lane )

Date : **2020/3/12**

Marker ( Lambda / HindIII, NEB#3012S )

**2.0, 1.0, 0.5** ( uL )

## 4. PCR Amplification

Conditions of PCR Ribosomal RNA ( rRNA ) gene  
 Template : 100 fold diluted DNA, 1 uL  
 Enzyme : KOD plus ( TOYOBO )  
 Volume : 20 uL

Reaction program :  
 x 30 cycle

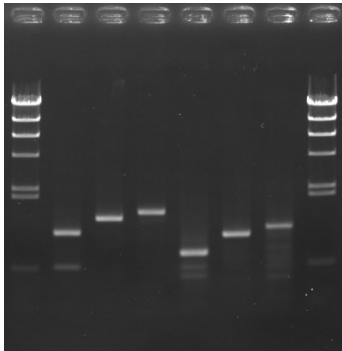
94 degC	2 min
94 degC	15 sec
60 degC	30 sec
68 degC	60 sec
68 degC	2 min

Date : **2020/3/12**

### PCR primers for rRNA gene

EB-20F	5'- AGTTTGATCCTGGCTC -3'
EB-350F	5'- TACGGGAGGCAGCAG -3'
EB-1100R	5'- AGGGTTGCGCTCGTTG -3'
EB-1400R	5'- ACGGGCGGTGTGTAC -3'
EB-1530R	5'- AAGGAGGTGATCCAGCC -3'

Reference: Please visit online-manual site below.

[http://dna.brc.riken.jp/en/manualen/manual\\_genom\\_dna](http://dna.brc.riken.jp/en/manualen/manual_genom_dna)**(1) (2) (3) (4) (5) (6)**

### Sample Number

	EB-20F	EB-350F
EB-1100R	<b>(1)</b>	<b>(4)</b>
EB-1400R	<b>(2)</b>	<b>(5)</b>
EB-1530R	<b>(3)</b>	<b>(6)</b>

Electrophoresis : 1% agarose gel, 1x TAE buffer  
 Loading DNA amount : 3 uL PCR product/Lane  
 Size marker : Lambda / HindIII ( 200ng/Lane )

## 5. Nucleotide sequence of rRNA gene

■ Confirmed Date : **2016/4/13**(as original lot stock)