

# Microbial Genomic DNA

RIKEN DNA Bank catalog #

JGD : **12489**Lot # : **12489\_B3J1**Strain : **JCM 1149<sup>T</sup>**Organism : ***Lactiplantibacillus plantarum subsp. plantarum***

## 1. Shipping

Volume : **25** uL

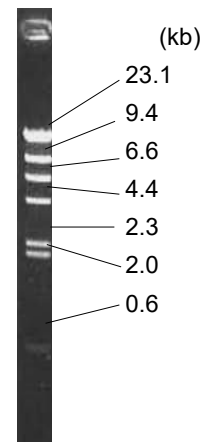
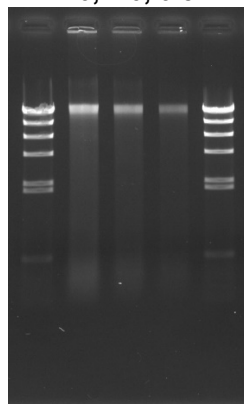
## 2. Concentration of Genomic DNA

Concentration ( OD 260 ) : **86** ng/uL  
A260 / A280 : **1.90**

## 3. Electrophoresis of Genomic DNA

Electrophoresis : 1% agarose gel, 1x TAE buffer  
Loading DNA amount : **2.0, 1.0, 0.5** uL/lane  
size marker : Lambda / HindIII ( 200 ng/Lane )  
**2.0, 1.0, 0.5** ( uL )Date : **2024/3/15**

Marker ( Lambda / HindIII, NEB#3012S )



## 4. PCR Amplification

Conditions of PCR Ribosomal RNA ( rRNA ) gene  
Template : 100 fold diluted DNA, 1 uL  
Enzyme : KOD plus ( TOYOBO )  
Volume : 20 uLReaction program :  
x 30 cycle 

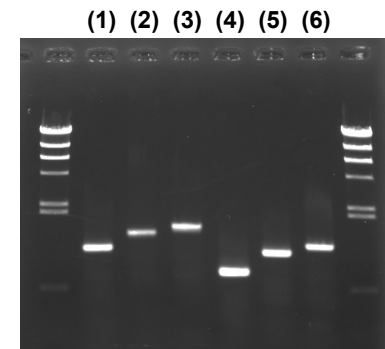
|         |        |
|---------|--------|
| 94 degC | 2 min  |
| 94 degC | 15 sec |
| 60 degC | 30 sec |
| 68 degC | 60 sec |
| 68 degC | 2 min  |

Date : **2024/3/27**

### PCR primers for rRNA gene

| Primer   | Sequence                  |
|----------|---------------------------|
| EB-20F   | 5'- AGTTTGATCCTGGCTC -3'  |
| EB-350F  | 5'- TACGGGAGGCAGCAG -3'   |
| EB-1100R | 5'- AGGGTTGCGCTCGTTG -3'  |
| EB-1400R | 5'- ACGGGCGGTGTGTAC -3'   |
| EB-1530R | 5'- AAGGAGGTGATCCAGCC -3' |

Reference: Please visit online-manual site below.

[http://dna.brc.riken.jp/en/manualen/manual\\_genom\\_dna](http://dna.brc.riken.jp/en/manualen/manual_genom_dna)

### Sample Number

| Sample   | EB-20F | EB-350F |
|----------|--------|---------|
| EB-1100R | (1)    | (4)     |
| EB-1400R | (2)    | (5)     |
| EB-1530R | (3)    | (6)     |

Electrophoresis : 1% agarose gel, 1x TAE buffer  
Loading DNA amount : 3 uL PCR product/Lane  
Size marker : Lambda / HindIII ( 200ng/Lane )

## 5. Nucleotide sequence of rRNA gene

Confirmed Date : **2024/3/21**